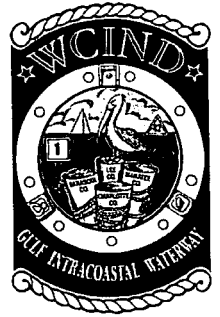


WEST COAST INLAND NAVIGATION DISTRICT

A Special Tax District of the State of Florida

200 E. Miami Avenue, Venice, FL 34285
Telephone: (941) 485-9402; Fax: (941) 485-8394



Board of County Commissioners

Commissioner John R. Chappie - Manatee County
Commissioner Tammy Hall - Lee County

Commissioner Nora Patterson - Sarasota County
Stephen R. Deutsch - Charlotte County

January 24, 2013

RECEIVED

JAN 28 2013

BOARD RECORDS

Mr. R. B. "Chips" Shore
Manatee County Clerk of the Circuit Court
P. O. Box 25400
Bradenton, FL 34206

Dear Mr. Shore:

We are pleased to offer our Public Facilities Report as required per F. S. 189.415:

F.S. 189.415(2)A - Description of existing facility (site plan attached):

At 200 East Miami Avenue in the City of Venice, WCIND owns property that is 80' x 100' with a one-story concrete building consisting of 1,530 sq. ft. of office space. The porch is approximately 25' x 5'. This office accommodates three employees along with office fixtures, furniture, and equipment used to operate the District. There are eight parking spaces associated with the office located adjacent to the building on the property. The current demand on the building as WCIND headquarters is as a records deposit/resource center which receives approximately one to two visitors daily during the regular office hours: weekdays from 8:00 a.m. to 4:00 p.m.

F.S. 189.415(2)B - Description of public facility that may be improved in the next five years:

At 200 East Miami Avenue in the City of Venice, the WCIND may require improvements in the kitchen/storage area. There would be no expansion of the current structure. Increased funding will be furnished by WCIND budget appropriations supported by funds received from millage levied in each county of the District at .0394 mills annually or from operating reserves maintained by the District. Certain building maintenance and routine repairs are planned due to the age and condition of the present building. These expense items are planned and budgeted for FY2012/2013.

F.S. 189.415(2)C,D,E - This District may propose to replace existing facilities within the next ten years.

F.S. 189.415(3),(4),(5),(6),(7),(8), (9), and (10) - does not apply.

Sincerely,

A handwritten signature in black ink, appearing to read 'Charles W. Listowski', is written over a white background.

Charles W. Listowski
Executive Director

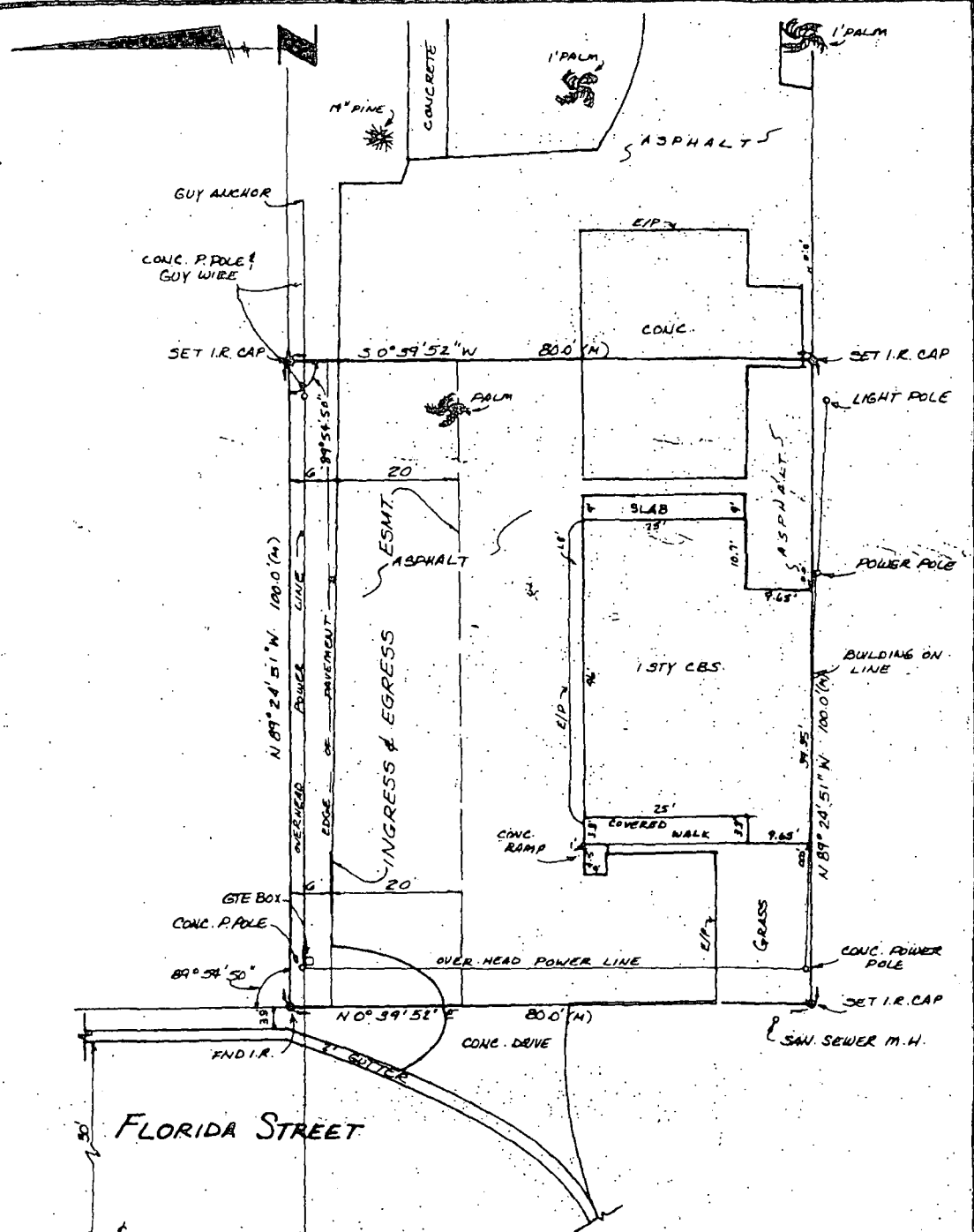
Attachment

ACCEPTED IN OPEN SESSION

FEB 12 2013

BOARD OF COUNTY COMMISSIONERS
MANATEE COUNTY, FLORIDA

AF 24560



DESCRIPTION

SEE ATTACHED SHEET

The Bearings shown are assumed and do not refer to the true meridian.

CERTIFICATE
 THIS IS TO CERTIFY THAT A SURVEY WAS MADE THIS DAY OF THE PROPERTY AS DESCRIBED AND SHOWN HEREON AND THAT THE SURVEY AND SKETCH ARE ACCURATE AND CORRECT TO THE BEST OF OUR KNOWLEDGE AND BELIEF.
 BRIGHAM & WINNINGHAM, INC.
 BY *Raymond T. Brigham* DATE: 5-23-83
 REGISTERED LAND SURVEYOR NO. 2670
 STATE OF FLORIDA
 VOID UNLESS EMBOSSED BY SURVEYOR'S SEAL
 THIS SURVEY MEETS MINIMUM TECHNICAL STANDARDS FOR LAND SURVEYING IN THE STATE OF FLORIDA (CHAP. 21 HH-6FCA) EFFECTIVE 9/1/81

BRIGHAM & WINNINGHAM, INC.

LAND SURVEYORS
 712 SHAMROCK BLVD.
 VENICE, FLORIDA 33595
 PH.: (813) 485-9665

Sheet 1 of 2.