



# Manatee County Sheriff's Office - Monthly Jail Report

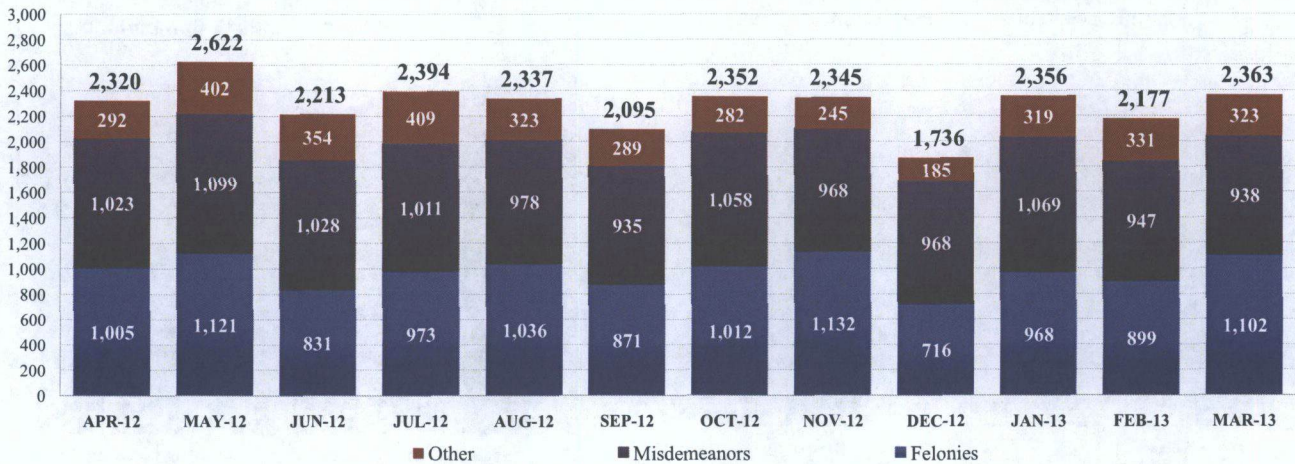


## JAIL POPULATION

### Custody Status - MARCH

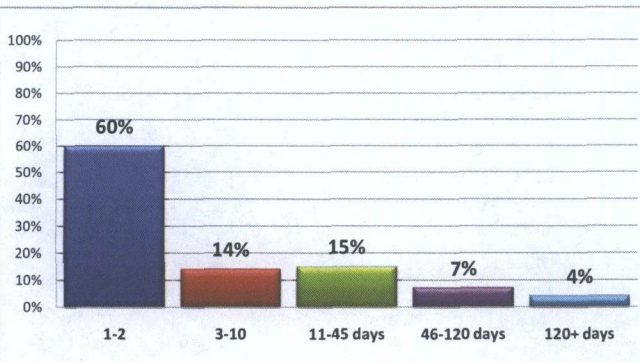
	<u>Daily Average</u> <u>Mar-12</u>	<u>Daily Average</u> <u>Mar-13</u>	<u>% Change</u>
Total Sentenced (Fel)	338	276	-18.3%
Total Sentenced (Misd)	35	33	-5.7%
Probation Violators	54	59	9.3%
Total Pre-Trial	615	573	-6.8%
Total Awaiting Sentencing	21	30	42.9%
All Others	32	31	-3.1%
<b>TOTAL</b>	<b>1,095</b>	<b>1,002</b>	<b>-8.5%</b>

### Number of Charges by Month - 12-Month Period \*



- \* "Other" category includes charges such as Municipal or Civil violations, Child support
- \* Includes all charges (Fel/Misd/Other), not body count
- \* Includes only NEW bookings (no re-bookings such as Weekenders or returning inmates on hold)
- \* Does NOT include Criminal Registrants, Court Order Pickups, or Courtesy Holds for Other Agencies

### Length of Stay - Year 2012



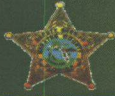
Yearly Average      **2011**      **2012**  
15 Days      16 Days

### Bookings Breakdown - March 2013

	MAL	FEMAL	JUV	W/E
13-Mar	782	300	79	11
13-Feb	725	301	86	13
13-Jan	789	314	120	8
12-Dec	589	242	79	6
12-Nov	654	277	94	14
12-Oct	773	303	98	14
12-Sep	838	335	115	15
12-Aug	629	316	86	12
12-Jul	894	316	92	9
12-Jun	771	387	71	15
12-May	873	351	113	21
12-Apr	782	323	105	22

- \* Does not include re-bookings, criminal registrants, court pickups
- \* Shows total number of individuals booked per month

BCC LB  
MC 30  
Jail Report 4/23  
Investig. No. 6137



# Manatee County Sheriff's Office - Monthly Jail Report



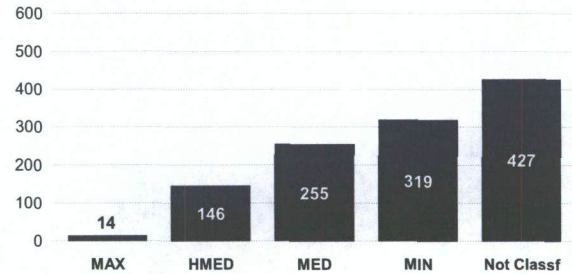
## JAIL ACTIVITY & MONTHLY STATISTICS

### Bookings

<b>Monthly Bookings</b>	<u>Mar-12</u> 1,221	<u>Mar-13</u> 1,161	<u>% Change</u> -4.9%
<b>Annual Average</b>	<u>Year 2011</u> 1,315	<u>Year 2012</u> 1,194	<u>% Change</u> -9.2%

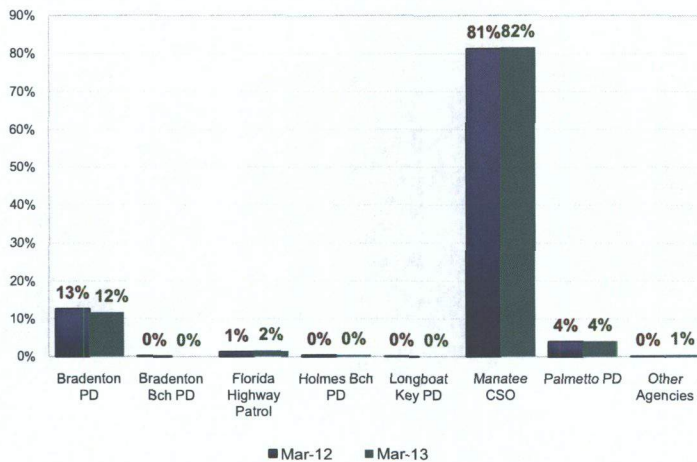
\* Includes only new bookings (no re-bookings)

### March 2013 Inmate Security Level Classification

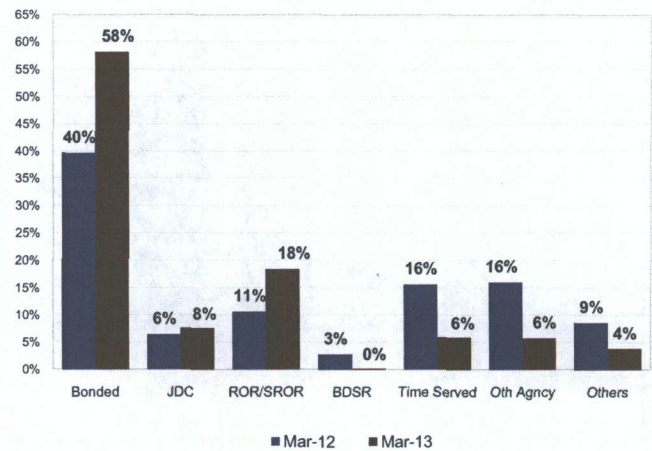


\* Not Classified includes Juveniles, Medical Pod, short stays (in-outs)

### % of Total Intakes by Agency Mar 2012 vs. Mar 2013 Comparison



### % of Total Releases Mar 2012 vs. Mar 2013 Comparison



\* Others include weekenders, registrants, purges, etc.

### Monthly Intakes - New Bookings by Agency

	<u>Mar 2012</u>	<u>Mar 2013</u>
<b>New Bookings:</b>		
Bradenton PD	155	136
Bradenton Bch PD	2	0
Florida Highway Patrol	15	18
Holmes Bch PD	5	5
Longboat Key PD	1	0
Manatee CSO	993	948
Palmetto PD	49	48
Other Agencies	1	6
<b>Total</b>	<b>1,221</b>	<b>1,161</b>

\* New bookings only (no re-bookings)

\* New charges added while in jail were NOT considered

### Monthly Releases - By Charges

	<u>Mar 2012</u>	<u>Mar 2013</u>
Bonded	938	927
Registrants	74	68
Release on Own Recognizance	121	173
Supervised ROR	131	121
Bond and SROR	66	3
DJJ or Parent Custody	153	122
Other Agencies	380	92
NFO / Nolle	71	9
Other	134	52
Time Served	370	94
<b>Total</b>	<b>2,438</b>	<b>1,661</b>

\* Other includes weekenders, registrants, purges, etc.