

Manatee County Public Works Department
Change Order No. 2
SWWRF Process Modification for Nitrogen Removal and
Digester Modifications
Manatee County Project # 6079080 and WW00958
March 29, 2013

Pursuant to the Manatee County, Florida, Agreement for Utility Architectural Engineering Services RFP06-4395TC for various consultation, evaluations, analysis, and design as required by the various Departments, and entered into by and between the COUNTY OF MANATEE, FLORIDA, Hereinafter referred to as the "COUNTY" and CH2M HILL, INC., herein referred to as the "CONSULTANT", a determination has been made by the COUNTY that there is a need for the performance of or rendering of services by the CONSULTANT of a certain "Work Assignment" under the purview of said Contract and the CONSULTANT is hereby authorized to perform or render the particular services of work as described as follows:

TITLE OF PROJECT: SWWRF Process Modification for Nitrogen Removal and Digester Modifications – Manatee County Project # 6079080 and WW00958

PHASES AND/OR TASKS OF PROFESSIONAL SERVICES AUTHORIZED:

CONSULTANT will perform tasks as more specifically detailed in the attached Scope of Services, Task 2 and Task 6.

Compensation to the CONSULTANT for rendering all of the above identified services and products shall not exceed the total fee summarized below:

PROJECT FEES:

Task Description	Consultant Fee
Original Cost for Work Assignment No. 10	\$869,434
Change Order No. 1 for Work Assignment No. 10	\$49,314
Change Order No. 2 for Work Assignment No. 10	\$97,746
Total Fee:	\$1,016,494

The COUNTY may authorize, in writing, in advance, adjustments in the compensation for particular tasks established above, provided such adjustments do not exceed the maximum compensation authorized for this Work Assignment. Should the scope of CONSULTANT's services change, the COUNTY may authorize an amendment to this Work Assignment to address agreed to increase costs to this Work Authorization.

The budget for the SWWRF Process Modification for Nitrogen Removal and Digester Modifications design and construction is \$8,100,000. Any modification to the project resulting in increases to prior cost estimates or potential overruns shall be communicated to the COUNTY, in writing prior to initiation of work, for approval of the Contract Manager.

Work Assignment Number 10

**"SWWRF Process Modification for Nitrogen Removal and Digester
Modifications"**

Manatee County Project # 6079080 and WW00958

CH2M HILL
4350 West Cypress Street
Suite 600
Tampa, FL 33607

By: Wendy Nero

Wendy Nero
Vice President

COUNTY OF MANATEE, FLORIDA

By: Melissa M. Wendel

Melissa M. Wendel, CPPO
Purchasing Official

Date: 5/21/13

Manatee County Public Works Department

Change Order No. 2

Scope of Services

Project: SWWRF Process Modification for Nitrogen Removal and Digester Modifications

Location: Southwest WRF, Bradenton, FL

Manatee County Project Number: # 6079080 and WW00958

Description:

On July 9, 2012, CH2M HILL was given a notice to proceed with a project at Manatee County's Southwest Water Reclamation Facility (SWWRF) to convert its conventional activated sludge treatment process to a Modified Ludzack-Ettinger (MLE) process and convert its anaerobic digesters to aerobic sludge holding tanks. Recently, the digesters have started failing such that only Primary Digester #2 is fully functional. Manatee County has declared the modification of the primary and secondary digesters an emergency project and has asked CH2M HILL to accelerate the design and construction of the digester modification. The additional scope and budget that CH2M HILL requires to accelerate the design and create additional bid packages is discussed below.

Manatee County is currently designing a replacement influent force main to be routed to the SWWRF. This replacement force main was intended to be constructed around the same time as the construction of the MLE process modification. In order to minimize the number of contractors on site and working in the same area, Manatee County has tasked CH2M HILL with routing the influent force main from the plant boundary to upstream of the headworks. The additional scope and budget to perform this design is also provided below.

During a recent meeting with Manatee County, it was discussed that the Headworks influent 36" pipe, especially at a key area where an encased elbow is located, is subject to erosion and may require rehabilitation or replacement. The County requested that CH2M HILL provide a scope of work for reviewing the condition of the pipeline and to provide a recommendation with respect to rehabilitation or replacement.

Additional Scope of Work under Task 2 – Design Phase Services

Accelerated Design, Bid, and Construction Services of Digester Modifications

To accelerate the design, bid, and award of the digester modification, CH2M HILL has already preformed some foundational work. Three internal and external meetings were held to discuss the changes required to accelerate the digester modification task. A Technical Memorandum titled "Southwest WRF Sludge Treatment" was developed and delivered on 2/12/13 which reviewed the possible causes of insufficient dewatering and possible means of optimizing the dewatering equipment. CH2M HILL recommended that the project be broken down into sub packages that will purchase long lead items and allow construction to proceed in a timely manner. These packages included:

- A prepurchase package for purchasing of the jet aeration equipment which was designated as a long lead item
- A prepurchase package of the MCCs, transformers and switches which were designated as long lead items
- A demolition Package which would facilitate the demolition of the digesters, two at a time, while keeping the plant operation
- A construction package that would result in a fully operational sludge area

CH2M HILL has already submitted the packages for the jet aeration, electrical equipment and demolition. These packages were updated based on the County comments. After initial submittal to the County, the demolition construction package was revised to only demolish digesters 1 and 3 in the demolition package instead of 4

digesters. Digesters 2 and 4 will be demolished in the construction package. In addition to the scope of design of the digester modification, the County has asked CH2M HILL to incorporate a decanting system into each of the three primary digesters. This additional design will be added into the construction package mentioned above.

CH2M HILL will also provide bid and award services. During the bidding process, CH2M HILL will provide responses to bidder questions and issue addenda. After the bids are received, CH2M HILL will review bids from suppliers for aeration and electrical equipment and from contractors for demolition and construction of the modifications to the sludge area, and provide recommendations for the selections of equipment suppliers and contractors. After contracts are awarded, CH2M HILL will tailor the documents to reflect the final contracts. Since the design of the facilities will be based on a selected equipment supplier, the drawings and specifications will be updated to reflect the selected equipment after supplier selections are made. CH2M HILL has included time for a prebid meeting for the construction package.

Addition of Influent Force Main Design

In order to incorporate the replacement influent force main into the current project, CH2M HILL must coordinate with the County to determine the connection point at the SWWRF property fence line for the pipeline. CH2M HILL will investigate at least 2 options for routing of the pipe. One option will be above ground and the other below ground. For the below ground option, CH2M HILL will review the necessity for shoring in the vicinity of the clarifiers to avoid undermining of their foundations. CH2M HILL will reroute any other influent force mains on the plant site as necessary in an effort to minimize the overall construction cost of the project. CH2M HILL will incorporate the routing of the replacement influent force main and the rerouting of any existing influent force mains into the construction sequencing of the overall project.

Headworks Influent Riser Pipe Elbow Investigation

Manatee County has also asked CH2M HILL to evaluate the elbow connecting to the vertical headworks influent 36" pipe. This pipe was installed when the headworks was constructed in the late 1980s. The elbow and up to 5 feet in length of both connecting pipes are concrete encased. Without undermining the headworks structure, the only way to determine the condition of the elbow is to bypass the headworks and send Closed Circuit Television (CCTV) survey equipment into the pipe. This method will determine if there are holes in the pipe or there are flaws in the elbow connections. It will not determine the pipe wall thickness. The pipe will also have standing water in it, so the quality of the CCTV survey is unclear.

Additional Scope of Work under Task 5 – Construction Phase Services

The acceleration of the digester design packages and the need for multiple construction contracts will require additional time for visits to the site at intervals appropriate to the various stages of construction to observe the progress and quality of the executed work of the Contractors and to determine in general if such work is proceeding in accordance with the Contract Documents than what was originally estimated at the inception of this project. It is anticipated that five additional monthly construction progress meetings will be held including technical site visits. Four additional site visits will be required beyond the aforementioned visits to determine substantial completion and final completion of the modification to Digesters 1 and 3 and the modification to Digesters 2 and 4.

Additional Scope of Work under Task 6 – Part-Time Construction Project Representative Services

The acceleration of the digester design, the routing of the influent force main, and the survey of the headworks influent pipe elbow will require a longer construction time than what was originally estimated at the inception of this project. Also the submittal process will require more time for coordination, since there will be several contractors involved with the project. CH2M HILL will need additional budget under this task to staff a part-time resident observer on the project site and for an on-call engineer to observe construction progress and answer contractor questions.

Additional Deliverables

- Technical Memorandum describing insufficient dewatering causes and solutions
- Design of decanter systems in three of the sludge holding tanks
- Design of new 42" influent pipeline from property line into existing headworks influent pipe
- Investigation of the condition of the 36" influent line elbow
- Purchasing Documents for Jet Aeration Equipment
- Purchasing Documents for Electrical Equipment
- Construction documents for Demolition
- Construction Documents for the Digester Modifications
- Rework of Construction documents for Demolition in order to add the demolition of Digesters 2 and 4 into the Construction Documents for the Digester Modification package
- Bid and award services including 2 prebid meetings

Schedule

In order to accommodate the acceleration of a specific component of the design, incorporate the design for decanting in each primary digester, incorporate the influent force main routing into the overall design, and evaluate the headworks influent pipe elbow, the current schedule for the MLE process modification will need to be extended by five weeks. Attachment A shows the proposed schedule to complete the acceleration of the digester modification as well as the MLE process modification schedule extended by five weeks.

Budget

Based on the scope of work above, the following additional budget is required for the project.:

Billing Category	Billing Rate (\$/hr)	Budgeted Hours	Cost
Task 2			
Project Manager	146	114	\$16,644
Senior Project Engineer	132	190	\$25,080
Project Engineer	108	36	\$3,888
Design Engineer	83	100	\$8,300
Design Technician	73	118	\$8,614
Estimator	70	8	\$560
Administrative Assistant	55	44	\$2,420
Additional Task 2 Labor		602	\$65,506
Expenses (travel and shipping)*			\$1,260
Additional Task 2 Cost			\$66,766
Task 5			
Project Manager	146	16	\$2,336
Senior Project Engineer	132	98	\$12,936
Additional Task 5 Labor		114	\$15,272

Expenses (travel)*			\$875
Additional Task 5 Cost			\$16,147
Task 6			
Design Engineer	83	120	\$9,960
Additional Task 6 Labor		120	\$9,960
Expenses (travel)			\$0
Additional Task 6 Cost			\$9,960
ZNS Additional Survey			\$4,873
Total Additional Cost			\$97,746

*Travel expenses include Gainesville staff trips to and from Manatee County

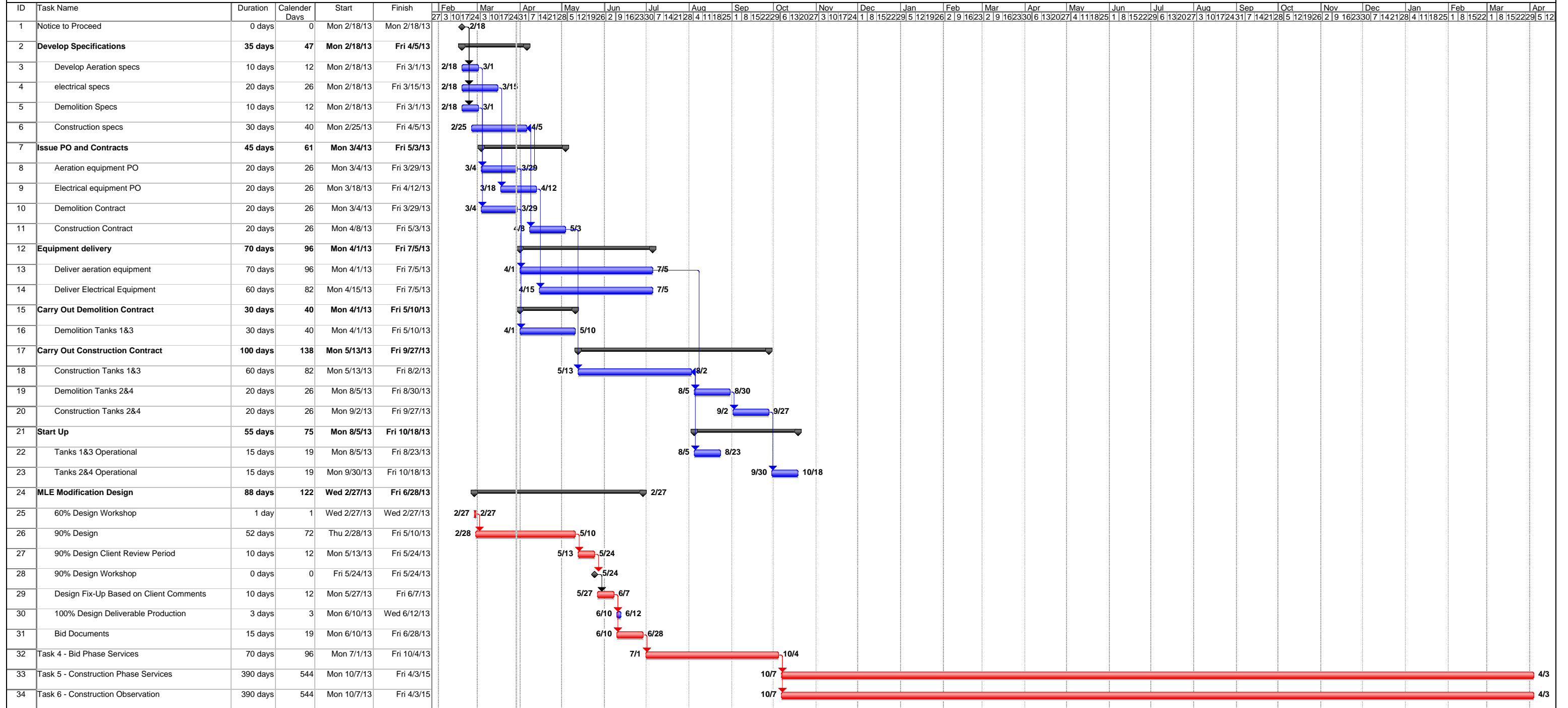
Please see Attachment B for a breakdown of this budget.

Please see Attachment C for a scope from ZNS.

Assumptions

- The budget provided is the additional amount of budget necessary to complete the above described scope.
- Cost is based on the addition of jet aeration in all 4 digesters, the addition of decanting capability in the primary digesters, the evaluation of the influent 36" Headworks riser pipe elbow, and the routing of the replacement influent force main from the SWWRF property boundary to just upstream of the SWWRF Headworks.
- This budget does not include any cost for further studies that may be required or recommended for alleviating the problems associated with operations of the digesters and the facilities.
- CH2M HILL will not accept any liability of the existing concrete encased 36" influent force main elbow and riser pipe to the headworks as the design influent flows to the SWWRF are not changing, and the lifetime of the elbow and riser pipe are unknown.
- An independent CCTV contractor will contract with the County for survey of the influent pipe. CH2M HILL will still be present during the time of the survey, will review the video with the County, and will use the report that the Contractor produces to help determine with the County the condition of the Headworks riser pipe influent elbow. No additional design work is included in this task.

Attachment A
Manatee SWWRF Process Modification for Nitrogen Removal and Digester Modifications
Proposed Project Schedule



Project: Manatee SWWRF Proposed O
Date: Fri 3/29/13

Task		Progress		Summary		Rolled Up Critical Task		Rolled Up Progress		External Tasks		Group By Summary	
Critical Task		Milestone		Rolled Up Task		Rolled Up Milestone		Split		Project Summary		Deadline	

MANATEE COUNTY
WORK ASSIGNMENT NO. 10
SWWRF Process Modification for Nitrogen Removal and Digester Modifications
Manatee County Project No. 6079080 and WW00958
BUDGET FOR PERFORMANCE OF SERVICES
CH2M HILL
DATE 3/28/13

	Principal	Project Manager	Senior Project Engineer	Project Engineer	Senior Design Engineer	Design Engineer	Project Architect	Designer/Tech	Drafting Supervisor	Construction Inspector	Senior Drafter	Drafter	Arch Designer	Estimator	Administrative Assistant	Secretary	Construction Project Rep	Plant Operations Specialist	Senior Project Scientist	Total Hours	Total Labor Cost By Task	Other Direct Costs	Total Estimated Cost	
2012 Hourly Rates	\$168.00	\$146.00	\$132.00	\$108.00	\$92.00	\$83.00	\$114.00	\$73.00	\$73.00	\$72.00	\$63.00	\$56.00	\$87.00	\$70.00	\$55.00	\$44.00	\$102.00	\$102.00	\$114.00					
1 Task 1 - Data Collection, Basis of Design Report and 30% Design Phase Services	16	113	421	599	0	92	18	387	0	0	0	0	9	70	81	0	0	0	0	1806	\$187,527	\$2,350	\$189,877	
Task 2 - Design Phase Services	0	170	447	705	0	0	29	1187	0	0	0	0	39	102	256	0	0	0	0	2935	\$274,534	\$4,410	\$278,944	
Task 2 - Additional Scope for Design of Additional Blowers and Facilities (Change Order 1)	0	46	76	124	0	44	8	160	0	0	0	0	0	8	24	0	0	0	0	490	\$48,264	\$1,050	\$49,314	
2 Task 2 - Additional Scope for Digester Design Acceleration and Influent Force Main Incorporation into Project (Change	0	114	190	36	0	100	0	118	0	0	0	0	0	8	44	0	0	0	0	610	\$65,506	\$1,260	\$66,766	
3 Task 3 - Permitting Phase Services	0	12	12	64	0	0	8	0	0	0	0	0	0	0	12	0	0	0	0	108	\$11,820	\$7,470	\$19,290	
4 Task 4 - Bidding Phase Services	0	48	12	52	0	0	0	8	0	0	0	0	0	0	8	0	0	0	0	128	\$15,232	\$330	\$15,562	
Task 5 - Construction Phase Services	0	195	254	962	0	0	52	142	0	0	0	0	0	0	230	0	8	0	0	1843	\$195,654	\$8,610	\$204,264	
5 Task 5 - Additional Scope for Construction Phase Services (Change Order 2)	0	16	98	0	0	0	0	0	0	0	0	0	0	0	0	0	0	0	0	114	\$15,272	\$875	\$16,147	
Task 6 -Part-Time Construction Project Representative Services	0	0	0	0	0	800	0	0	0	0	0	0	0	0	0	0	800	0	0	1600	\$148,000	\$0	\$148,000	
6 Task 6 - Additional Scope for Construction Representative Services (Change Order 2)	0	0	0	0	0	120	0	0	0	0	0	0	0	0	0	0	0	0	0	120	\$9,960	\$0	\$9,960	
Total Man-hours by Discipline	16	698	1412	2542	0	1156	115	2002	0	0	0	0	48	188	655	0	808	0	0	9640				
Total Man-hour Cost By Discipline	\$2,688	\$101,908	\$186,384	\$274,536	\$0	\$95,948	\$13,110	\$146,146	\$0	\$0	\$0	\$0	\$4,176	\$13,160	\$36,025	\$0	\$82,416	\$0	\$0		\$971,769	\$26,355	\$998,124	
Subcontractors ZNS Engineering, Inc (Survey) Driggers Engineering, Inc. (Geotechnical) ZNS Engineering, Inc (Additional Survey)																							(\$9,106.00 + 10% Administrative Fee) (\$3,163.86 + 10% Administrative Fee) (\$4,430 + 10% Administrative Fee)	\$10,017 \$3,480 \$4,873
Total Cost																							\$1,016,494	

Note: The County and CH2M HILL agree that invoicing for services to be provided under this work assignment shall be at the hourly rates shown above.

March 28, 2013

VIA E-MAIL: Ryan.Messer@ch2m.com

Mr. Ryan Messer
CH2M Hill
4350 West Cypress Street
Tampa, Florida 33607-4178

**RE: Manatee County SW Treatment Plant
Topographic Surveying & Utility Locate Services
ZNS File No. 00-43082**

Dear Mr. Messer:

The intent of this document is to establish professional services and fees and to create contractual rights as required for development of the above referenced project.

SCOPE OF SERVICES:

- Perform vacuum excavate locates at up to 10 locations on the site which are yet to be determined. It is assumed all work will be in unpaved areas, although it may turn out that some may be in paved areas. All locations will be field located and a Surveyor's Affidavit showing locations and elevations of all vacuum locates will be provided.
- All survey work will comply with the specifications as outlined in "Minimum Technical Standards for Land Surveying in the State of Florida", Chapter 5J-17.050 of the Florida Administrative Code. The Horizontal Survey Datum will be provided in State Plane Coordinates (83/90 Adjustment) and Vertical Datum will be NGVD 1929.

FEE:

Please see attached 'Exhibit A'; our spreadsheet by Classification, which will be billed on a time and material basis with not to exceed fees totaling \$4,430.00

TIMEFRAME:

Twenty (20) working days from Notice to Proceed.

All travel expenses within Manatee County are included in the above lump sum fee. However, other travel, long distance calls or express delivery charges will be billed as additional expenses. Any other time and material items and costs for special services such as blueprinting over and above the normal allotment of five prints, government maps, recorded instruments, aerials, etc. will be due upon beyond receipt of invoice.

Should the above proposal meet with your approval, we understand CH2M HILL will forward ZNS a purchase order and associated subcontract documentation for completion of the services noted. Services will not commence until receipt of



a fully executed purchase order. This proposal becomes null and void if not executed within a period of thirty (30) days.

Respectfully submitted,

ZNS Engineering, L.C.



James N. Gatch, Jr., P.S.M.
Vice President and Director of Survey

JNG:joa

cc: Bookkeeping

K:\wpfiles\PROPOSALS - YEARLY FOLDERS\PROPOSALS 2012\GATCH - 2 PAGE PROPOSALS\ADDITIONAL SERVICES\CH2M HILL - MANCO SW TRTMNT PLANT-43082\CH2M HILL - MANCO SW TRTMNT PLANT - PROPOSAL-43082-EMAIL-JOA.doc



EXHIBIT 'A'

ZNS ENGINEERING, L.C.

Project: MANATEE COUNTY SW TREATMENT PLANT

Date: 03/22/13

ZNS JOB NO. 43082

Project Manager: Jim Gatch

Task (Hours) Hourly Rate \$/Hr.	Subsurface Utility Exploration															Fee Per Task	
	Principal (PSM)	Professional Surveyor (PSM)	Project Manager	Survey Technician	CAD/Drafting Technician	Admin	Field Crew (1 man)	Field Crew (2 man)	Field Crew (3 man)	Field Crew (4 man)	16' Survey Boat	Soft Dig (Soft)	Soft Dig (Hard)	GPR (Day Rate)	GPR (mob/demob)		10% ADMIN FEE
	\$138.00	\$98.00	\$86.00	\$67.00	\$51.00	\$41.00	\$75.00	\$89.00	\$113.00	\$131.00	\$88.00	\$223.00	\$242.00	\$1,201.00	\$136.00		
SUE		2		2		2		4				5	5	1	1		\$4,430.00
																	\$0.00
																	\$0.00
																	\$0.00
																	\$0.00
																	\$0.00
																	\$0.00
																	\$0.00
																	\$0.00
																	\$0.00
																	\$0.00
																	\$0.00
																	\$0.00
																	\$0.00
																	\$0.00
																	\$0.00
																	\$0.00
																	\$0.00
																	\$0.00
Total Hours	0	2	0	2	0	2	0	4	0	0	0	5	5	1	1	0	
																	Reimbursable: \$0.00
																	Total Fee: \$4,430.00

- Project Observations/Assumptions:
1. Horizontal Datum: Florida State Plane coordinates- NAD '83/90
 2. All Surveys will be prepared in accordance with specifications and requirements as set for by Manatee County's Scope Contract

May 21, 2013 - Regular Meeting
Agenda Item #19

Approved in Open Session 5/21/13,
Manatee Board of County Commissioners

Subject

Change Order #2 to Work Assignment #10, SWWRF Process Modification for Nitrogen Removal and Digester Modifications

Briefings

None

Contact and/or Presenter Information

Chris Daley-CPPB, Purchasing Division, Ext. 3048

Anthony Benitez, Project Engineer II, Public Works, Ext. 7333

Jeff Streitmatter III, Project Management Division Manager, Public Works, Ext. 7335

Action Requested

Authorize the County Administrator or his designee to execute Change Order #2 to Work Assignment #10 with CH2M Hill, Inc., increasing Work Assignment #10 by \$97,746.00 from \$918,748.00 to \$1,016,494.00.

Enabling/Regulating Authority

Manatee County Code of Law

Background Discussion

Change Order #2 to Work Assignment #10 is a result of the failure of the sludge treatment digesters such that only one digester is fully functional necessitating the need for accelerated design, bid, and construction services of the digester modification system. Change Order #2 adds design for a replacement influent force main to be routed to the SWWRF and sets forth evaluation of the Headworks Influent Pipe Riser Elbow location in terms of lessening the potential for erosion and expanding life expectancy before rehabilitation or replacement are necessary.

Change Order #1, approved on January 28, 2013, provided for redesign to capture the additional air demand into the aeration basins. This redesign increased the Work Assignment amount by \$49,314, from \$869,434.00 to \$918,748.00.

Work Assignment #10 for SWWRF Process Modification for Nitrogen Removal and Digester Modifications was approved on June 15, 2012, in the amount of \$869,434.00 for modifying the nitrogen removal process and managing the waste residual process from anaerobic digestion to aerobic holding.

County Attorney Review

Not Reviewed (No apparent legal issues)

Explanation of Other

Reviewing Attorney

N/A

Instructions to Board Records

Original to Board Records.

Original to CH2M Hill, Inc., 4350 West Cypress St., Suite 600, Tampa, FL 33607. Signature Page to Chris Daley, Purchasing Division (chris.daley@mymanatee.org), Anthony Benitez (anthony.benitez@mymanatee.org), Gwen Richards (gwen.richards@mymanatee.org) Public Works, Project Management Division. **Sent 5/23/13, RLL**

Cost and Funds Source Account Number and Name

Recovery Zone Bonds: Acct No. 4146079080-534000/6079080-004

Amount and Frequency of Recurring Costs

N/A

Attachment: [CH2MHill CO#2 to WA#10.pdf](#)

MEMORANDUM




PUBLIC WORKS DEPARTMENT
Project Management Division
1022 26th Avenue E.
Bradenton, FL 34208

MANATEE COUNTY
FLORIDA

Phone: 941-708-7450
Fax: 941-708-7549
www.mymanatee.org

To: Melissa M. Wendel, CPPO, Purchasing Official

From: Jeff Streitmatter III, P.E., Project Management Division Manager 

Date: April 18, 2013

Subject: **Work Assignment No. 10**
Change Order No. 2
SWWRF Process Modification for Nitrogen Removal and Digester Modifications
CH2M HILL, Inc.

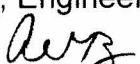
Attached is Change Order No.2 to Work Assignment No.10 with CH2M HILL, Inc. for accelerated design, bidding, and construction of digester modifications and additional design and construction phase services for influent force main as requested by Utilities staff. This Change Order increases the contract amount by \$97,746.00, from \$918,748.00 to \$1,016,494.00. The fee estimate for this Change Order, in the amount of \$97,746.00, has been reviewed by the appropriate County staff and found to be acceptable. Upon approval, please provide the authorized IFAS Work Assignment number. The funding source for this work assignment is Utility Rates and Utilities 2010B RZEDB Bonds.

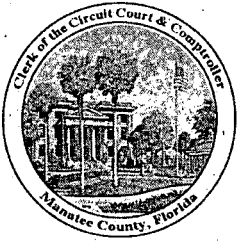
Please contact Anthony Benitez, Project Engineer II, if you have any questions regarding the attached document.

Thank you for your continued assistance.

MANATEE COUNTY
2013 APR 22 AM 8 40
PURCHASING

JS/ab

cc: Daniel T. Gray, Director, Utilities
Ron Schulhofer, Director, Public Works
Sia Mollanazar, P.E., Deputy Director, Engineering Services
Anthony Benitez, Project Engineer II 
Project File: 6079080 1.1



R. B. "Chips" Shore

CLERK OF THE CIRCUIT COURT AND COMPTROLLER OF MANATEE COUNTY

1115 Manatee Avenue West, Bradenton, Florida 34205 - Phone (941) 749-1800 - Fax (941) 741-4082
P.O. Box 25400, Bradenton, Florida 34206 - www.manateeclerk.com

May 22, 2013

TO: CH2MHill, Inc.
4350 West Cypress Street, Suite 600
Tampa, Florida 33607

FROM: Clerk of Circuit Court
Board Records Department
Robin Liberty (RL) *(RL)*
P. O. Box 25400
Bradenton, FL 34206

RE: **Southwest Water Reclamation Facility – Nitrogen
Removal & Digester Modifications:** Change Order 1 to
T1200073, adding 85 additional calendar days.

Accepted: In open session by the Manatee County Board
of County Commissioners on May 21, 2013.

RBS:RLL
Enclosure

cc: Board Records
Chris Dailey, Purchasing (email)
Anthony Benitez, Public Works (email)
Gwen Richards, Public Works (email)

"Pride in Service with a Vision to the Future"

Clerk of the Circuit Court – Clerk of Board of County Commissioners – County Comptroller – Auditor and Recorder

From: [Robin Liberty](#)
To: ["chris.daley@mymanatee.org"](#); ["anthony.benitez@mymanatee.org"](#); ["gwen.richards@mymanatee.org"](#)
Subject: BCC Mtg 5/21/13: Item 19: SWWRF - Change Order 2 - CH2MHILL
Date: Thursday, May 23, 2013 9:47:00 AM
Attachments: [BC20130521DOCA19.pdf](#)

Attached is Change Order 2 to Work Assignment 10 with CH2MHill, Inc., approved by the County Commission on 5/21/13.

Robin Liberty
Board Records
For R.B. "Chips" Shore
Manatee County Clerk of the Circuit Court & Comptroller
www.manateeclerk.com
robin.liberty@manateeclerk.com
941-749-1800, ext. 4181

"Pride in Service with a Vision to the Future"