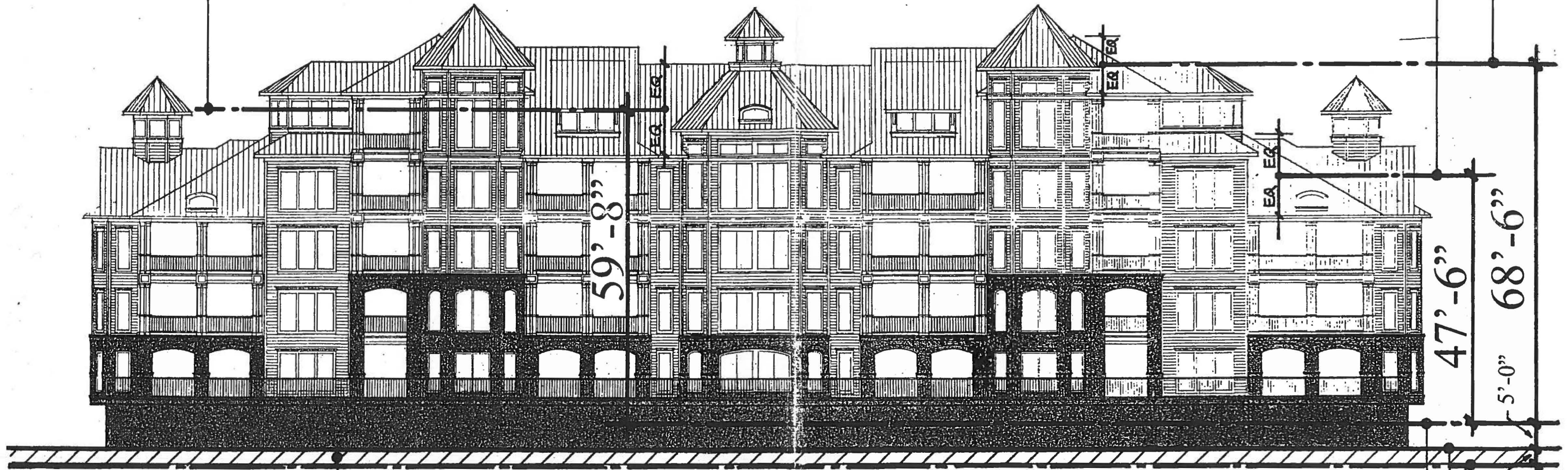


MIDPOINT OF HIGHEST ROOFLINE AT 5TH LEVEL
MIDPOINT OF HIGHEST ROOFLINE AT 4TH LEVEL
MIDPOINT OF HIGHEST ROOFLINE AT 3RD LEVEL



FILL AT GARAGE

BASE FLOOD ELEVATION - 13.0' M.S.L.

BOTTOM OF GARAGE - 8.0' M.S.L.

EXISTING GRADE LEVEL - 6.0' M.S.L.

LONG BAR POINTE

Building Type III – Elevation Study

SBC Development Company
 Barrington Group, Incorporated, Developer

Mucasey & Associates, Architects

Submitted by Shelley Hamilton

ORIGINAL SUBMITTAL