

PLANT MATERIAL FOR HISTORIC PARRISH / US 301



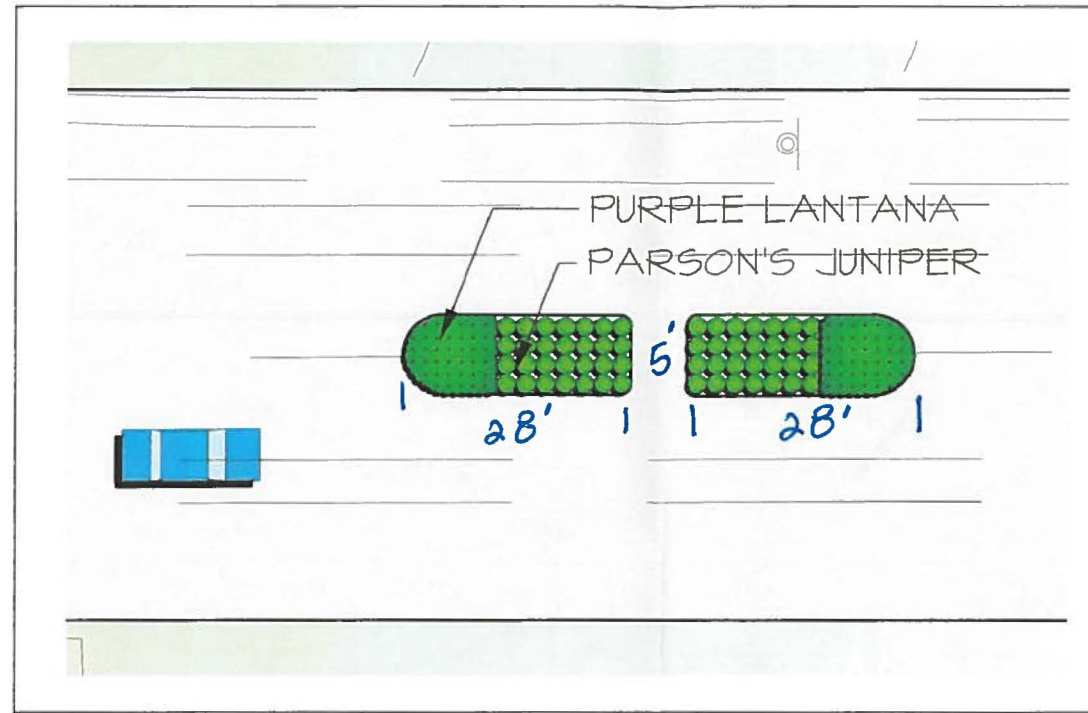
RIBBON PALM



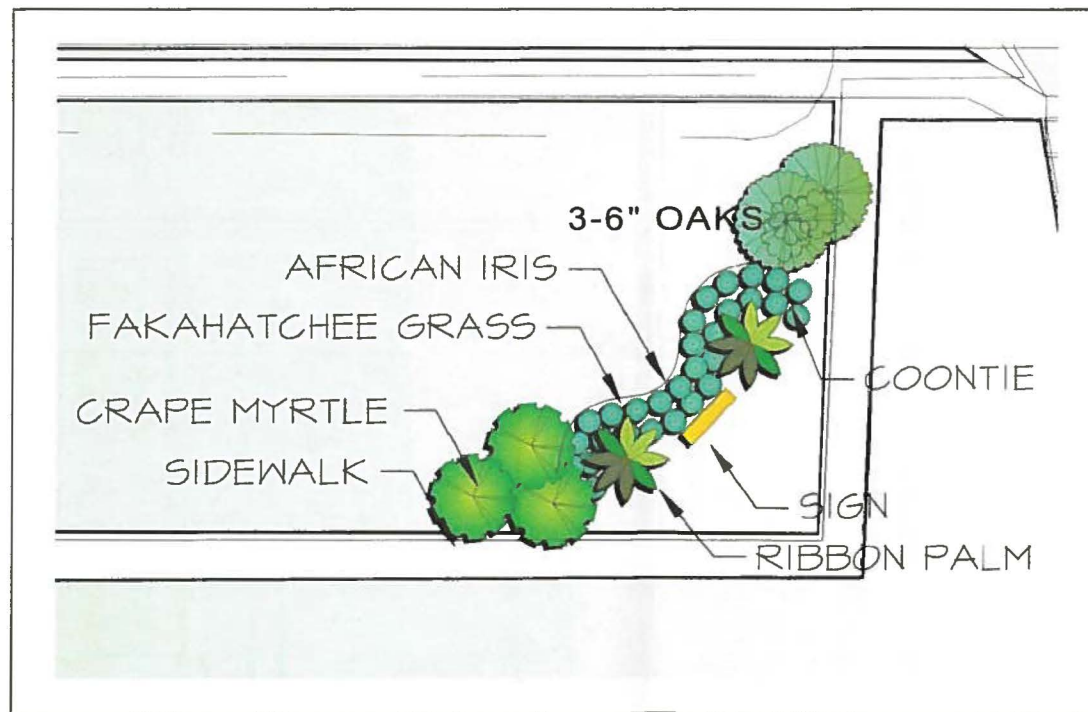
CRAPE MYRTLE



FAKAHATCHEE GRASS



LANDSCAPE MEDIAN



ENTRANCE SIGN



COONTIE



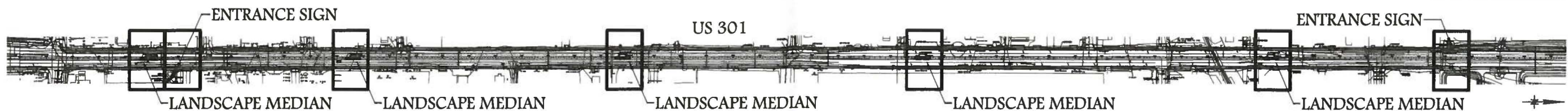
PURPLE LANTANA



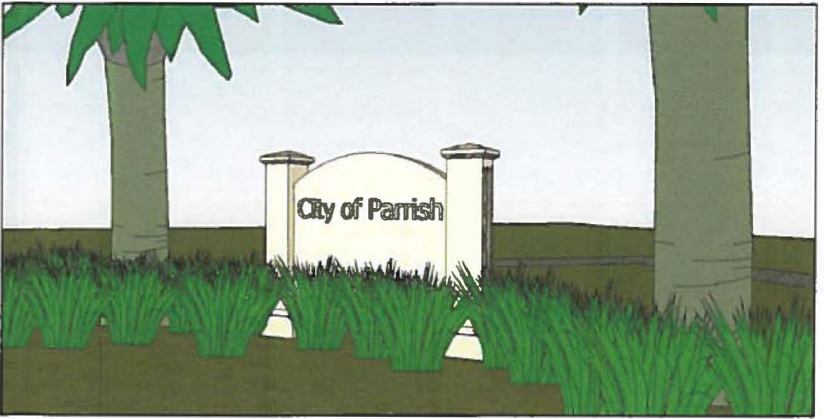
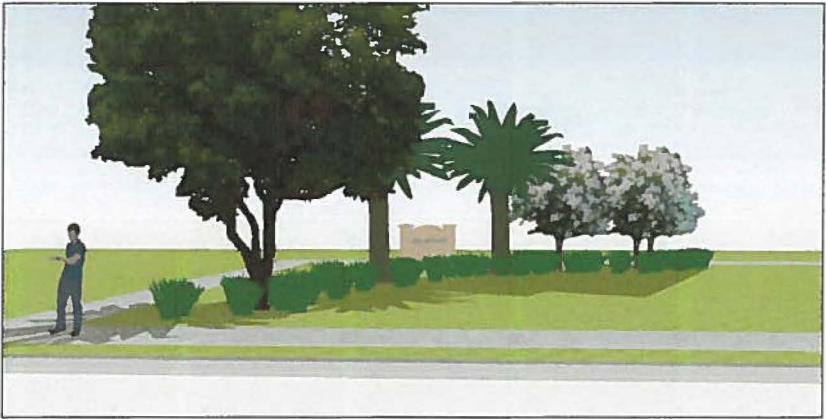
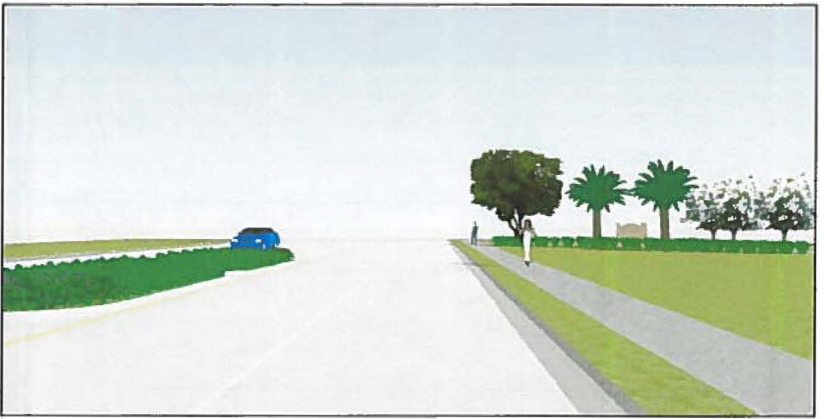
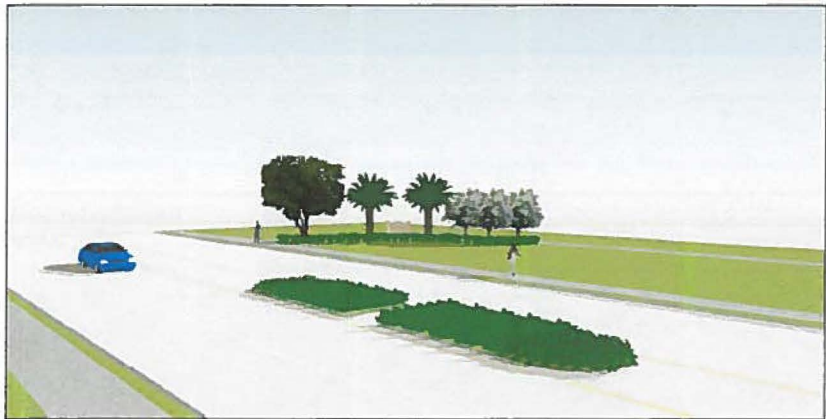
PARSON'S JUNIPER



AFRICAN IRIS



LANDSCAPE ARCHITECTURE CONCEPTS FOR HISTORIC PARRISH / US 301



MEDIAN & SIGNS CONCEPTS

November 19, 2013 - Regular Meeting
Agenda Item #40

November 19, 2013

Subject

Landscaping of US 301 in Parrish

APPROVED IN OPEN SESSION
BOARD OF COUNTY COMMISSIONERS, MANATEE COUNTY

Briefings

None

Contact and/or Presenter Information

Presenter: Sia Mollanazar, P.E., Deputy Director - Engineering Services, Public Works Department (941-708-7487)

Contact: Sia Mollanazar, P.E., Deputy Director - Engineering Services, Public Works Department (941-708-7487)

Emailed to Sia Mollanazar 11/20/2013/nr

Action Requested

Authorization for County Administrator or his designee to enter into a maintenance agreement with FDOT for maintenance of median landscaping to be installed on US 301 in Parrish by FDOT.

Enabling/Regulating Authority

.

Background Discussion

FDOT originally proposed a concept to include:

- Two welcoming signs with landscaping, one at each end of the project;
- Five median landscaping island locations, each with two 28-foot-long landscape islands;
- The use of low maintenance plants as well as irrigation was proposed.

When last discussed by the BOCC there was no second to a motion to accept maintenance responsibility.

If the BOCC desires FDOT will seek to fund the design and construct all landscaping islands and welcoming signs at an estimated cost of \$286,470.00.

FDOT requires the contractor to be responsible for landscape maintenance for the first year, which would include re-mulching.

Manatee County is required to enter into a maintenance agreement with FDOT for eternal maintenance of the proposed landscaping. A draft of the design elements is attached for your review.

Manatee County Government Administrative Center
Commission Chambers, First Floor
9:00 a.m. - November 19, 2013

The estimated annual maintenance cost range, at the time of the meeting, was between \$5,000 to \$10,000. It will be several years until the county has to take over the maintenance and at that time the county will need to address the additional maintenance services needed through the budget process.

Concept drawing of improvements is attached.

County Attorney Review

Not Reviewed (No apparent legal issues)

Explanation of Other

Reviewing Attorney

N/A

Instructions to Board Records

Authorize the County Administrator or his designee to subsequently execute contract documents for FDOT Landscaping Maintenance agreement.

Cost and Funds Source Account Number and Name

101-0019300

Amount and Frequency of Recurring Costs

\$5,000 to \$10,000 annually for annual maintenance

Attachment: [Historic Parrish - US 301 Landscape Plan.pdf](#)