

## Bobbi Roy

---

**From:** Emmy Landrum  
**Sent:** Friday, February 10, 2017 9:37 AM  
**To:** Brooks Armstrong  
**Cc:** Bobbi Roy; Debbie Bassett  
**Subject:** RE: Letter to the editor and commissioners

### Wingate East - Z-14-09 – Mosaic Fertilizer, LLC/Wingate East

Thank you for writing to the Board of County Commissioners to express your concerns regarding this project. Your comments will be shared with staff from Building and Development Services and the County Attorney's Office and provided to the Clerk for the official record when the hearing continues on Wednesday, February 15, 2017.

On behalf of Chairman Benac and the other Commissioners, thank you for your interest and participation.

*Emmy Landrum*  
*Executive Assistant*  
Board of County Commissioners  
Phone (941) 745-3709  
Fax (941) 745-3790  
[emmy.landrum@mymanatee.org](mailto:emmy.landrum@mymanatee.org)



---

**From:** Brooks Armstrong [mailto:pinelilywild@yahoo.com]  
**Sent:** Friday, February 10, 2017 7:48 AM  
**To:** Priscilla WhisenantTrace <priscilla.whisenanttrace@mymanatee.org>; Charles Smith <Charles.Smith@mymanatee.org>; Stephen R Jonsson <steve.jonsson@mymanatee.org>; Robin DiSabatino <robin.disabatino@mymanatee.org>; Vanessa Baugh <vanessa.baugh@mymanatee.org>; Betsy Benac <betsy.benac@mymanatee.org>; Carol Whitmore <carol.whitmore@mymanatee.org>  
**Subject:** Letter to the editor and commissioners

Commissioners,

This letter was sent to the Bradenton Herald, Bradenton Times and Sarasota Herald. Also, please look at the large color map of all lands already mined, and new ones proposed (in your poossession). More than 800 square miles already mined in Florida.

Thank you,

Brooks Armstrong

Florida resident in the "phosphate district"

## The Post Mining and Reclamation Economy

Regarding Mosaic's Wingate East mine application to Manatee County.

Would mining activities preclude future normal uses of mined out lands? This is question #6 from the Manatee County staff report, Standards for Master Mining Approval, page 13.

The answer is much more than staff reports. Not only building, but agriculture on reclaimed land would be extremely limited. Is the burden of proof not on the applicant? The market has not demonstrated that agriculture is a viable use of reclaimed mine land.

Mosaic may have their small, intensely managed experiments with ag after mining, however vast areas of western Polk County demonstrate no agriculture to speak of on reclaimed land. The only exception is a rare siting of a few cows on grazing land.

Go to Hardee County. In 2008 a "Mosaic Agreement" granted the county economic gurus 42 million dollars over a ten year period as compensation for the 11,000 acre South Fort Meade Extension mine. The county will tell you this is for economic mitigation in the post mining economy. This money hopes to start up industry, but the results have been questionable at best. Is this not an admission even by the industry itself, that after mining and reclamation, lands will not support the former agricultural economy?

One time, temporary use; permanent loss. Phosphate strip mining is only profitable for Mosaic. Commissioners, think ahead one hundred years. Vote for Manatee County. Vote no on phosphate mining.

Brooks Armstrong

Bone Valley resident

## Bobbi Roy

---

**From:** Emmy Landrum  
**Sent:** Friday, February 10, 2017 9:37 AM  
**To:** Judy Witchey  
**Cc:** Bobbi Roy; Debbie Bassett  
**Subject:** RE: Mosaic

### Wingate East - Z-14-09 – Mosaic Fertilizer, LLC/Wingate East

Thank you for writing to the Board of County Commissioners to express your concerns regarding this project. Your comments will be shared with staff from Building and Development Services and the County Attorney's Office and provided to the Clerk for the official record when the hearing continues on Wednesday, February 15, 2017.

On behalf of Chairman Benac and the other Commissioners, thank you for your interest and participation.

*Emmy Landrum*  
*Executive Assistant*  
Board of County Commissioners  
Phone (941) 745-3709  
Fax (941) 745-3790  
[emmy.landrum@mymanatee.org](mailto:emmy.landrum@mymanatee.org)



-----Original Message-----

**From:** Judy Witchey [mailto:snook.bear@icloud.com]  
**Sent:** Thursday, February 09, 2017 9:12 PM  
**To:** Priscilla WhisenantTrace <priscilla.whisenanttrace@mymanatee.org>; Charles Smith <Charles.Smith@mymanatee.org>; Stephen R Jonsson <steve.jonsson@mymanatee.org>; Robin DiSabatino <robin.disabatino@mymanatee.org>; Vanessa Baugh <vanessa.baugh@mymanatee.org>; Carol Whitmore <carol.whitmore@mymanatee.org>; Betsy Benac <betsy.benac@mymanatee.org>  
**Subject:** Mosaic

Please vote No to mosaic ...  
Sent from my iPhone

## **Bobbi Roy**

---

**From:** Emmy Landrum  
**Sent:** Friday, February 10, 2017 9:41 AM  
**To:** Tina J Snyder  
**Cc:** Bobbi Roy; Debbie Bassett  
**Subject:** RE: Say no to Mosaic!

### **Wingate East - Z-14-09 – Mosaic Fertilizer, LLC/Wingate East**

Thank you for writing to the Board of County Commissioners to express your concerns regarding this project. Your comments will be shared with staff from Building and Development Services and the County Attorney's Office and provided to the Clerk for the official record when the hearing continues on Wednesday, February 15, 2017.

On behalf of Chairman Benac and the other Commissioners, thank you for your interest and participation.

*Emmy Landrum*  
*Executive Assistant*  
Board of County Commissioners  
Phone (941) 745-3709  
Fax (941) 745-3790  
[emmy.landrum@mymanatee.org](mailto:emmy.landrum@mymanatee.org)



---

**From:** Tina J Snyder [mailto:mspistol62@gmail.com]  
**Sent:** Thursday, February 09, 2017 8:43 PM  
**To:** Priscilla WhisenantTrace <priscilla.whisenanttrace@mymanatee.org>  
**Subject:** Say no to Mosaic!

Save our waterways, land fertility, health, peaceful use and value. Please don't let greed win. All the so called community outreach/donations are just wolves in sheep's clothing. Please see through the sugar coating and think of the future for our children and grandchildren . The damage truly outweighs the good they do.

Thank you :)

Tina Snyder

Happy Connecting. Sent from my Sprint Samsung Galaxy S® 5

## **Bobbi Roy**

---

**From:** Robin DiSabatino  
**Sent:** Thursday, February 09, 2017 8:01 PM  
**To:** Marianne Lopata; Bobbi Roy  
**Subject:** Fwd: Mosaic vote

*Respectfully yours,*

*Robin*

Robin Sue DiSabatino  
Manatee County Commissioner  
District 4  
941-685-5368  
[Robin.disabatino@mymanatee.org](mailto:Robin.disabatino@mymanatee.org)

Working for you and sent from my iPad

Begin forwarded message:

**From:** marie <[myakkaldy@yahoo.com](mailto:myakkaldy@yahoo.com)>  
**Date:** February 9, 2017 at 7:57:32 PM EST  
**To:** <[robin.disabatino@mymanatee.org](mailto:robin.disabatino@mymanatee.org)>  
**Subject:** Mosaic vote  
**Reply-To:** marie <[myakkaldy@yahoo.com](mailto:myakkaldy@yahoo.com)>

As a long time Myakka City resident I have to make known my deep concerns in regards to the proposed mining activity being supported by you in my local government.

Six months ago 215 MILLION gallons of water containing low-level radiation and other pollutants poured into Florida's PRIMARY drinking water aquifer through a gaping sinkhole 45 feet wide. When I say 215, You must understand this was only what was reported.

Not only will you be voting for the potential poisoning of our water supply and rivers, streams, and ponds; but you will be voting for the annihilation of our beautiful pastures and wetlands, not to mention the natural habitats of the wildlife that has as much right to the land as we do.

I would like to remind you that you have been voted into or appointed to act as stewards of this area and are trusted by the people of this state to make decisions that are in the best interest of the people, our land and this state - not corporate entities. I urge you to take a Sunday drive with your families to see Mosaic's Mulberry facility and then drive by the area that will be next. Common sense tells us that the land can never be returned to it's natural state after being raped in such a way. Please see the land for yourself and then vote your conscience. Once this is done it

cannot be undone. Please vote No!

Sincerely,  
W.M. Davidson

## Bobbi Roy

---

**From:** Robin DiSabatino  
**Sent:** Thursday, February 09, 2017 7:24 PM  
**To:** Bobbi Roy; Marianne Lopata; Sheri Smith  
**Subject:** Fwd: Wingate Mosaic

*Respectfully yours,*

*Robin*

Robin Sue DiSabatino  
Manatee County Commissioner  
District 4  
941-685-5368  
[Robin.disabatino@mymanatee.org](mailto:Robin.disabatino@mymanatee.org)

Working for you and sent from my iPad

Begin forwarded message:

**From:** Deb Comeau <[dgladstonecomeau@gmail.com](mailto:dgladstonecomeau@gmail.com)>  
**Date:** February 9, 2017 at 5:59:14 PM EST  
**To:** [Robin.disabatino@mymanatee.org](mailto:Robin.disabatino@mymanatee.org)  
**Subject:** Wingate Mosaic

Dear Robin,

I know you are already against Mosaic mining in our County but I want to reinforce with you that we the people and myself appose it as well.

We have also had the price of water hike up in cost every year for the last two years and two to go. Can you imagine what we will be paying if we have a spill? To drink clean water?

We will loose tourism and fishery. And you know a measly \$40 million from Mosaic will not cover the cost if we have any spillage. They will bankrupt and be gone! We don't even know what the Mulberry incident is going to cost them at this point! I have toured the Golf course, Country club and as lovely as the reclamation looks, nothing is living in the water or woods! We don't know how long before life returns there!

Please fight for our wonderful Manatee county!

Thanks,

Debra Comeau  
PO Box 5901  
Bradenton, FL  
34281  
941-752-1835

## Bobbi Roy

---

**From:** Emmy Landrum  
**Sent:** Thursday, February 09, 2017 3:12 PM  
**To:** Eric Swatek  
**Cc:** Bobbi Roy; Debbie Bassett  
**Subject:** RE: Vote NO on Mosaic Expansion!

### Wingate East - Z-14-09 – Mosaic Fertilizer, LLC/Wingate East

Thank you for writing to the Board of County Commissioners to express your concerns regarding this project. Your comments will be shared with staff from Building and Development Services and the County Attorney's Office and provided to the Clerk for the official record when the hearing continues on Wednesday, February 15, 2017.

On behalf of Chairman Benac and the other Commissioners, thank you for your interest and participation.

*Emmy Landrum*  
*Executive Assistant*  
Board of County Commissioners  
Phone (941) 745-3709  
Fax (941) 745-3790  
[emmy.landrum@mymanatee.org](mailto:emmy.landrum@mymanatee.org)



**From:** Eric Swatek [mailto:[eric@justqual.com](mailto:eric@justqual.com)]  
**Sent:** Thursday, February 09, 2017 9:56 AM  
**To:** Betsy Benac <[betsy.benac@mymanatee.org](mailto:betsy.benac@mymanatee.org)>  
**Subject:** Vote NO on Mosaic Expansion!

Dear Manatee County Commissioner:

Please vote NO on the upcoming Mosaic expansion. It is NOT worth the risk to our regional water supply. ENOUGH IS ENOUGH.

Regards,  
Eric



[eric@justqual.com](mailto:eric@justqual.com) | [www.justqual.com](http://www.justqual.com)



## Bobbi Roy

---

**From:** Emmy Landrum  
**Sent:** Thursday, February 09, 2017 3:12 PM  
**To:** Sunday Thielen  
**Cc:** Bobbi Roy; Debbie Bassett  
**Subject:** RE:

### Wingate East - Z-14-09 – Mosaic Fertilizer, LLC/Wingate East

Thank you for writing to the Board of County Commissioners to express your concerns regarding this project. Your comments will be shared with staff from Building and Development Services and the County Attorney's Office and provided to the Clerk for the official record when the hearing continues on Wednesday, February 15, 2017.

On behalf of Chairman Benac and the other Commissioners, thank you for your interest and participation.

*Emmy Landrum*  
*Executive Assistant*  
Board of County Commissioners  
Phone (941) 745-3709  
Fax (941) 745-3790  
[emmy.landrum@mymanatee.org](mailto:emmy.landrum@mymanatee.org)



**From:** Sunday Thielen [mailto:sundaythielen0812@gmail.com]  
**Sent:** Thursday, February 09, 2017 9:41 AM  
**To:** Priscilla WhisenantTrace <priscilla.whisenantrace@mymanatee.org>; Charles Smith <Charles.Smith@mymanatee.org>; Stephen R Jonsson <steve.jonsson@mymanatee.org>; Robin DiSabatino <robin.disabatino@mymanatee.org>; Vanessa Baugh <vanessa.baugh@mymanatee.org>; Carol Whitmore <carol.whitmore@mymanatee.org>; Betsy Benac <betsy.benac@mymanatee.org>  
**Subject:**

Please help save our beautiful Myakka river, Manatee and Sarasota water ways and land. Once it is destroyed by the mining the land and water ways can never be reclaimed back to its natural habitats for our gorgeous animals. I have lived and worked in Sarasota, Manatee and Myakka all of my life. I have already seen the damage it has done to east Manatee. IT IS A WASTE LAND !!! Nothing will ever grow or live on this land ever again!!! Please if you care anything about your fellow people or animals vote no on Mosaic's mining!!!!!!!!!!!!!!

## Bobbi Roy

---

**From:** Emmy Landrum  
**Sent:** Thursday, February 09, 2017 3:12 PM  
**To:** Katherine Aspinall  
**Cc:** Bobbi Roy; Debbie Bassett  
**Subject:** RE: Mosaic Mining Application on the Myakka and Peace Rivers

### Wingate East - Z-14-09 – Mosaic Fertilizer, LLC/Wingate East

Thank you for writing to the Board of County Commissioners to express your concerns regarding this project. Your comments will be shared with staff from Building and Development Services and the County Attorney's Office and provided to the Clerk for the official record when the hearing continues on Wednesday, February 15, 2017.

On behalf of Chairman Benac and the other Commissioners, thank you for your interest and participation.

*Emmy Landrum*  
*Executive Assistant*  
Board of County Commissioners  
Phone (941) 745-3709  
Fax (941) 745-3790  
**emmy.landrum@mymanatee.org**



-----Original Message-----

From: Katherine Aspinall [mailto:kathasp@icloud.com]  
Sent: Thursday, February 09, 2017 9:37 AM  
To: Priscilla WhisenantTrace <priscilla.whisenanttrace@mymanatee.org>; Charles Smith <Charles.Smith@mymanatee.org>; Stephen R Jonsson <steve.jonsson@mymanatee.org>; Robin DiSabatino <robin.disabatino@mymanatee.org>; Vanessa Baugh <vanessa.baugh@mymanatee.org>; Carol Whitmore <carol.whitmore@mymanatee.org>; Betsy Benac <betsy.benac@mymanatee.org>  
Cc: Kath <kathasp@me.com>  
Subject: Mosaic Mining Application on the Myakka and Peace Rivers

Dear Commissioners,

As a Sarasota resident, I write to ask that Mosaics' mining application for the Myakka and Peace rivers be declined on the basis that this will cause untold damage to this beautiful area. Please do not vote to approve the application.

Thank you in advance.

Katherine Aspinall

Sent from my iPad

## Bobbi Roy

---

**From:** Emmy Landrum  
**Sent:** Thursday, February 09, 2017 3:12 PM  
**To:** Kathie Hart  
**Cc:** Bobbi Roy; Debbie Bassett  
**Subject:** RE: Mosaic

### Wingate East - Z-14-09 – Mosaic Fertilizer, LLC/Wingate East

Thank you for writing to the Board of County Commissioners to express your concerns regarding this project. Your comments will be shared with staff from Building and Development Services and the County Attorney's Office and provided to the Clerk for the official record when the hearing continues on Wednesday, February 15, 2017.

On behalf of Chairman Benac and the other Commissioners, thank you for your interest and participation.

*Emmy Landrum*  
*Executive Assistant*  
Board of County Commissioners  
Phone (941) 745-3709  
Fax (941) 745-3790  
**emmy.landrum@mymanatee.org**



-----Original Message-----

From: Kathie Hart [mailto:kathiericchetti@gmail.com]  
Sent: Thursday, February 09, 2017 9:23 AM  
To: Priscilla WhisenantTrace <priscilla.whisenanttrace@mymanatee.org>; Charles Smith <Charles.Smith@mymanatee.org>; Stephen R Jonsson <steve.jonsson@mymanatee.org>; Robin DiSabatino <robin.disabatino@mymanatee.org>; Vanessa Baugh <vanessa.baugh@mymanatee.org>; Carol Whitmore <carol.whitmore@mymanatee.org>; Betsy Benac <betsy.benac@mymanatee.org>  
Subject: Mosaic

Commissioners,

Please deny Mosaic's request for permit in Myakka City. As a homeowner on the Myakka River, I want to maintain a clean river for myself and future generations.

Katherine Hart  
100 Palm Dr.  
Venice, FL 34293

Sent from my iPad

## Bobbi Roy

---

**From:** Emmy Landrum  
**Sent:** Thursday, February 09, 2017 3:12 PM  
**To:** Teresa Jack  
**Cc:** Bobbi Roy; Debbie Bassett  
**Subject:** RE: Mosaic

### Wingate East - Z-14-09 – Mosaic Fertilizer, LLC/Wingate East

Thank you for writing to the Board of County Commissioners to express your concerns regarding this project. Your comments will be shared with staff from Building and Development Services and the County Attorney's Office and provided to the Clerk for the official record when the hearing continues on Wednesday, February 15, 2017.

On behalf of Chairman Benac and the other Commissioners, thank you for your interest and participation.

*Emmy Landrum*  
*Executive Assistant*  
Board of County Commissioners  
Phone (941) 745-3709  
Fax (941) 745-3790  
**emmy.landrum@mymanatee.org**



-----Original Message-----

From: Teresa Jack [mailto:terrijack@icloud.com]  
Sent: Thursday, February 09, 2017 7:31 AM  
To: Priscilla WhisenantTrace <priscilla.whisenanttrace@mymanatee.org>; Charles Smith <Charles.Smith@mymanatee.org>; Stephen R Jonsson <steve.jonsson@mymanatee.org>; Robin DiSabatino <robin.disabatino@mymanatee.org>; Vanessa Baugh <vanessa.baugh@mymanatee.org>; Carol Whitmore <carol.whitmore@mymanatee.org>; Betsy Benac <betsy.benac@mymanatee.org>  
Subject: Mosaic

Dear Sirs,

Please stop Mosaic from ruining our beautiful environment. Vote no to having this company's selfish interest destroy our waters and land.

Thank you

Sincerely, Teresa Jack  
Sent from my iPhone

## Bobbi Roy

---

**From:** Emmy Landrum  
**Sent:** Thursday, February 09, 2017 3:11 PM  
**To:** TIM  
**Cc:** Bobbi Roy; Debbie Bassett  
**Subject:** RE: Mosaic mining

### Wingate East - Z-14-09 – Mosaic Fertilizer, LLC/Wingate East

Thank you for writing to the Board of County Commissioners to express your concerns regarding this project. Your comments will be shared with staff from Building and Development Services and the County Attorney's Office and provided to the Clerk for the official record when the hearing continues on Wednesday, February 15, 2017.

On behalf of Chairman Benac and the other Commissioners, thank you for your interest and participation.

*Emmy Landrum*  
*Executive Assistant*  
Board of County Commissioners  
Phone (941) 745-3709  
Fax (941) 745-3790  
[emmy.landrum@mymanatee.org](mailto:emmy.landrum@mymanatee.org)



---

**From:** TIM [mailto:timreifschneider0352@msn.com]  
**Sent:** Thursday, February 09, 2017 12:13 AM  
**To:** Priscilla WhisenantTrace <priscilla.whisenanttrace@mymanatee.org>; Charles Smith <Charles.Smith@mymanatee.org>; Stephen R Jonsson <steve.jonsson@mymanatee.org>; Robin DiSabatino <robin.disabatino@mymanatee.org>; Vanessa Baugh <vanessa.baugh@mymanatee.org>; Carol Whitmore <carol.whitmore@mymanatee.org>; Betsy Benac <betsy.benac@mymanatee.org>  
**Subject:** Mosaic mining

I live in Sarasota county and work in Manatee county, please DO NOT allow Mosaic to start mining operations that will effect and pollute the Myakka and Peace Rivers!

Sincerely,  
Tim Reifschneider

Sent from my Sprint Samsung Galaxy S® 6.

## Bobbi Roy

---

**From:** Emmy Landrum  
**Sent:** Thursday, February 09, 2017 3:11 PM  
**To:** Pamela Walters  
**Cc:** Bobbi Roy; Debbie Bassett  
**Subject:** RE: Mosaic

### Wingate East - Z-14-09 – Mosaic Fertilizer, LLC/Wingate East

Thank you for writing to the Board of County Commissioners to express your concerns regarding this project. Your comments will be shared with staff from Building and Development Services and the County Attorney's Office and provided to the Clerk for the official record when the hearing continues on Wednesday, February 15, 2017.

On behalf of Chairman Benac and the other Commissioners, thank you for your interest and participation.

*Emmy Landrum*  
*Executive Assistant*  
Board of County Commissioners  
Phone (941) 745-3709  
Fax (941) 745-3790  
[emmy.landrum@mymanatee.org](mailto:emmy.landrum@mymanatee.org)



-----Original Message-----

**From:** Pamela Walters [mailto:pamkwalters@gmail.com]  
**Sent:** Wednesday, February 08, 2017 8:10 PM  
**To:** Priscilla WhisenantTrace <priscilla.whisenanttrace@mymanatee.org>; Charles Smith <Charles.Smith@mymanatee.org>; Stephen R Jonsson <steve.jonsson@mymanatee.org>; Robin DiSabatino <robin.disabatino@mymanatee.org>; Vanessa Baugh <vanessa.baugh@mymanatee.org>; Carol Whitmore <carol.whitmore@mymanatee.org>; Betsy Benac <betsy.benac@mymanatee.org>  
**Subject:** Mosaic

I grew up in Bradenton and recently moved back. My husband and I live in a condo near downtown. We are thrilled with the positive changes being made in downtown and the Riverwalk. We attended the River Boat Regatta...what a great free event!

I am very concerned about Mosaic purchasing this property despite it not being zoned for their mining. I am afraid for our water supply and the proximity of this land to Lake Manatee. Please, refuse to let Mosaic take a chance in polluting our water supply!

Pam Pontious Walters and Charles Walters

Sent from my iPad

## Bobbi Roy

---

**From:** Emmy Landrum  
**Sent:** Thursday, February 09, 2017 3:11 PM  
**To:** Norm  
**Cc:** Bobbi Roy; Debbie Bassett  
**Subject:** RE: Mosaic demolishing our countryside

### Wingate East - Z-14-09 – Mosaic Fertilizer, LLC/Wingate East

Thank you for writing to the Board of County Commissioners to express your concerns regarding this project. Your comments will be shared with staff from Building and Development Services and the County Attorney's Office and provided to the Clerk for the official record when the hearing continues on Wednesday, February 15, 2017.

On behalf of Chairman Benac and the other Commissioners, thank you for your interest and participation.

*Emmy Landrum*  
*Executive Assistant*  
Board of County Commissioners  
Phone (941) 745-3709  
Fax (941) 745-3790  
**emmy.landrum@mymanatee.org**



-----Original Message-----

**From:** Norm [mailto:rminggnome@yahoo.com]  
**Sent:** Wednesday, February 08, 2017 2:35 PM  
**To:** Priscilla WhisenantTrace <priscilla.whisenanttrace@mymanatee.org>; Charles Smith <Charles.Smith@mymanatee.org>; Stephen R Jonsson <steve.jonsson@mymanatee.org>; Robin DiSabatino <robin.disabatino@mymanatee.org>; Vanessa Baugh <vanessa.baugh@mymanatee.org>; Carol Whitmore <carol.whitmore@mymanatee.org>; Betsy Benac <betsy.benac@mymanatee.org>  
**Subject:** Mosaic demolishing our countryside

Pleas have it in your heart to vote against them ruining our county. You were elected to prevent harm from coming here to hurt is or our land. Please do so and tell them "NO" we want to keep our lives good!

Thank You

Norman E. White Sent from my iPhone

## Bobbi Roy

---

**From:** Emmy Landrum  
**Sent:** Thursday, February 09, 2017 3:11 PM  
**To:** Joy Smith  
**Cc:** Bobbi Roy; Debbie Bassett  
**Subject:** RE: Stop Mosaic

### Wingate East - Z-14-09 – Mosaic Fertilizer, LLC/Wingate East

Thank you for writing to the Board of County Commissioners to express your concerns regarding this project. Your comments will be shared with staff from Building and Development Services and the County Attorney's Office and provided to the Clerk for the official record when the hearing continues on Wednesday, February 15, 2017.

On behalf of Chairman Benac and the other Commissioners, thank you for your interest and participation.

*Emmy Landrum*  
*Executive Assistant*  
Board of County Commissioners  
Phone (941) 745-3709  
Fax (941) 745-3790  
[emmy.landrum@mymanatee.org](mailto:emmy.landrum@mymanatee.org)



-----Original Message-----

From: Joy Smith [mailto:[smithmyakka@yahoo.com](mailto:smithmyakka@yahoo.com)]  
Sent: Wednesday, February 08, 2017 2:26 PM  
To: Priscilla WhisenantTrace <[priscilla.whisenanttrace@mymanatee.org](mailto:priscilla.whisenanttrace@mymanatee.org)>; Charles Smith <[Charles.Smith@mymanatee.org](mailto:Charles.Smith@mymanatee.org)>; Stephen R Jonsson <[steve.jonsson@mymanatee.org](mailto:steve.jonsson@mymanatee.org)>; Robin DiSabatino <[robin.disabatino@mymanatee.org](mailto:robin.disabatino@mymanatee.org)>; Vanessa Baugh <[vanessa.baugh@mymanatee.org](mailto:vanessa.baugh@mymanatee.org)>; Carol Whitmore <[carol.whitmore@mymanatee.org](mailto:carol.whitmore@mymanatee.org)>; Betsy Benac <[betsy.benac@mymanatee.org](mailto:betsy.benac@mymanatee.org)>  
Subject: Stop Mosaic

Please vote NO on Feb.15th. We have to stop the mining of our beautiful Myakka city!

Thank You,  
Joy Smith

Sent from my iPhone



## Bobbi Roy

---

**From:** Emmy Landrum  
**Sent:** Thursday, February 09, 2017 3:11 PM  
**To:** Jessica Miller  
**Cc:** Bobbi Roy; Debbie Bassett  
**Subject:** RE: NO MOSAIC IN MANATEE COUNTY

### Wingate East - Z-14-09 – Mosaic Fertilizer, LLC/Wingate East

Thank you for writing to the Board of County Commissioners to express your concerns regarding this project. Your comments will be shared with staff from Building and Development Services and the County Attorney's Office and provided to the Clerk for the official record when the hearing continues on Wednesday, February 15, 2017.

On behalf of Chairman Benac and the other Commissioners, thank you for your interest and participation.

*Emmy Landrum*  
*Executive Assistant*  
Board of County Commissioners  
Phone (941) 745-3709  
Fax (941) 745-3790  
[emmy.landrum@mymanatee.org](mailto:emmy.landrum@mymanatee.org)



---

**From:** Jessica Miller [mailto:[simonenina73@yahoo.com](mailto:simonenina73@yahoo.com)]  
**Sent:** Wednesday, February 08, 2017 1:50 PM  
**To:** Priscilla WhisenantTrace <[priscilla.whisenanttrace@mymanatee.org](mailto:priscilla.whisenanttrace@mymanatee.org)>; Charles Smith <[Charles.Smith@mymanatee.org](mailto:Charles.Smith@mymanatee.org)>; Stephen R Jonsson <[steve.jonsson@mymanatee.org](mailto:steve.jonsson@mymanatee.org)>; Robin DiSabatino <[robin.disabatino@mymanatee.org](mailto:robin.disabatino@mymanatee.org)>; Vanessa Baugh <[vanessa.baugh@mymanatee.org](mailto:vanessa.baugh@mymanatee.org)>; Carol Whitmore <[carol.whitmore@mymanatee.org](mailto:carol.whitmore@mymanatee.org)>; Betsy Benac <[betsy.benac@mymanatee.org](mailto:betsy.benac@mymanatee.org)>  
**Subject:** NO MOSAIC IN MANATEE COUNTY

All,

Please, no Mosaic in Manatee County. Thank you!  
Jessica A. Miller

## Bobbi Roy

---

**From:** Emmy Landrum  
**Sent:** Thursday, February 09, 2017 3:11 PM  
**To:** Suzanna Young  
**Cc:** Bobbi Roy; Debbie Bassett  
**Subject:** RE: Thoughts about Mosaic vote Feb. 15

### Wingate East - Z-14-09 – Mosaic Fertilizer, LLC/Wingate East

Thank you for writing to the Board of County Commissioners to express your concerns regarding this project. Your comments will be shared with staff from Building and Development Services and the County Attorney's Office and provided to the Clerk for the official record when the hearing continues on Wednesday, February 15, 2017.

On behalf of Chairman Benac and the other Commissioners, thank you for your interest and participation.

*Emmy Landrum*  
*Executive Assistant*  
Board of County Commissioners  
Phone (941) 745-3709  
Fax (941) 745-3790  
[emmy.landrum@mymanatee.org](mailto:emmy.landrum@mymanatee.org)



---

**From:** Suzanna Young [mailto:[atyoungnelson@icloud.com](mailto:atyoungnelson@icloud.com)]  
**Sent:** Wednesday, February 08, 2017 12:10 PM  
**To:** Betsy Benac <[betsy.benac@mymanatee.org](mailto:betsy.benac@mymanatee.org)>  
**Subject:** Thoughts about Mosaic vote Feb. 15

Dear Betsy,

You do have a very difficult decision to make, I understand. It is my hope you are giving this issue your a very thought-out deliberation.

Choices for our rivers and shrinking wetlands have to be made. Risky choices shouldn't be an option.

Are we not gambling Florida's future water supplies; our County's future health by allowing unlimited encroachment from all sides?

Our growing population, farmers, the mining industry and now climate change—all have been burdening our water sources for years.

Our conservation efforts seem meager in the face of it all. So, do we continue until we just dry up like California? Farm worker "refugees"

there are already growing in numbers --- something that isn't always in the news ....like shrinking ice caps.

The cost of clean water is going up, especially in the S.E. United States. Interesting is that water in Charlotte County is higher than Manatee

...and we are about to let their source be disturbed. Please don't forget we are all connected.

Our aquifers are not replenishing fast enough to keep up with the demands. A known fact. Rainfall isn't what it used to be either (to keep cisterns full like when I was a child in Englewood). Now, we may well be poisoning our environment by an industry with very caustic wastes. Add rampant growth. (Add everyday fertilizer run-off.)

From what I have heard and read, I am not convinced where all the millions of gallons of toxic spill went after the last sink hole opened up. There's NO Way it was "contained". Limestone is porous; it can be dissolved by the caustic radioactive wastewater or did an uncharted underground river take it away? To where? I think pouring tons cement down the hole—"closing the barn door..." is a contrived front! Pathetic!

Until Mosaic learns more about what it is doing, and adding past disasters, how many more disasters can we absorb?

133 years ago Florida was abundant in about everything. Then, phosphate mining didn't make a big impact. Now it's crowding the health of our environment and possibly ours. I think it's time to consider leaving the rest of the nature of Florida intact. A big dollar today may not be so grand in the future. Like each of us, you lose your health, you have nothing. We lose the health of Manatee County what do we have?

**I oppose letting anymore mining near sensitive wetlands and rivers; they are needed as never before. I oppose anymore mining expansion in our County until a use or safe disposal is developed for the toxic and dangerous wastes.**

Thank you for your honest consideration, Suzanna Young , a devout Florida citizen.

## Bobbi Roy

---

**From:** Emmy Landrum  
**Sent:** Thursday, February 09, 2017 3:11 PM  
**To:** tiff313@aol.com  
**Cc:** Bobbi Roy; Debbie Bassett  
**Subject:** RE: the rezoning and Wingate East Expansion hearing February 15

### Wingate East - Z-14-09 – Mosaic Fertilizer, LLC/Wingate East

Thank you for writing to the Board of County Commissioners to express your concerns regarding this project. Your comments will be shared with staff from Building and Development Services and the County Attorney's Office and provided to the Clerk for the official record when the hearing continues on Wednesday, February 15, 2017.

On behalf of Chairman Benac and the other Commissioners, thank you for your interest and participation.

*Emmy Landrum*  
*Executive Assistant*  
Board of County Commissioners  
Phone (941) 745-3709  
Fax (941) 745-3790  
[emmy.landrum@mymanatee.org](mailto:emmy.landrum@mymanatee.org)



**From:** tiff313@aol.com [mailto:tiff313@aol.com]  
**Sent:** Tuesday, February 07, 2017 12:04 PM  
**To:** Priscilla WhisenantTrace <priscilla.whisenantrace@mymanatee.org>; Charles Smith <Charles.Smith@mymanatee.org>; Stephen R Jonsson <steve.jonsson@mymanatee.org>; Robin DiSabatino <robin.disabatino@mymanatee.org>; Vanessa Baugh <vanessa.baugh@mymanatee.org>; Carol Whitmore <carol.whitmore@mymanatee.org>; Betsy Benac <betsy.benac@mymanatee.org>  
**Subject:** Re: the rezoning and Wingate East Expansion hearing February 15

Dear Sir and Madam,

I am writing you to urge you to deny this rezoning and Wingate East Expansion proposed by Mosaic. As argued by numerous presenters, the economic impact will cause untold damage far more than that gained by allowing this mining....We, my husband and I, have lived next to mining for many years. We are ranchers who predate mining in our area...so we were here first. My husband suffers from COPD which makes the dust which inundates our property almost unlivable...he has now been diagnosed with a mass that is referred to as Atypical TB. We are told that the organism is lifted through the air and deposited randomly through clouds of dust....my husband's doctor has taken months and invasive tests just to diagnose his ailment.

Not only has the dust (uploaded to Youtube at this link: <https://www.youtube.com/watch?v=I-Li0R990Q4>) caused difficulty breathing, we have suffered with water loss as well. I have copies of emails between SWFMWD and Mosaic detailing about six years in which pizometers measured a 2 1/2 ft. drop in water levels...and Mosaic did little to salvage the water levels....rather, Mosaic ramped up the wells in the area of Four Corners....the Little Manatee River functions as little more than a ditch at this point...we had to sell 1/2 our herd due to lack of water.

Thank you,  
Norma and John Killebrew

## Bobbi Roy

---

**From:** Robin DiSabatino  
**Sent:** Tuesday, February 07, 2017 11:17 AM  
**To:** Bobbi Roy  
**Subject:** Fwd: Mosaic

*Respectfully yours,*

*Robin*

Robin Sue DiSabatino  
Manatee County Commissioner  
District 4  
941-685-5368  
[Robin.disabatino@mymanatee.org](mailto:Robin.disabatino@mymanatee.org)

Working for you and sent from my iPad

Begin forwarded message:

**From:** Vincent Vertefeuille <[vvlv37@verizon.net](mailto:vvlv37@verizon.net)>  
**Date:** February 7, 2017 at 10:27:03 AM EST  
**To:** Betsy Benac <[Betsy.benac@mymanatee.org](mailto:Betsy.benac@mymanatee.org)>, Carol Whitmore <[Carol.whitmore@mymanatee.org](mailto:Carol.whitmore@mymanatee.org)>, "Charles B. Smith" <[Charles.smith@mymanatee.org](mailto:Charles.smith@mymanatee.org)>, Priscilla Whisenant Trace <[priscilla.trace@mymanatee.org](mailto:priscilla.trace@mymanatee.org)>, Robin DiSabatino <[Robin.disabatino@mymanatee.org](mailto:Robin.disabatino@mymanatee.org)>, "Stephen R. Jonsson" <[steve.jonsson@mymanatee.org](mailto:steve.jonsson@mymanatee.org)>, Vanessa Baugh <[Vanessa.baugh@mymanatee.org](mailto:Vanessa.baugh@mymanatee.org)>  
**Subject:** Mosaic

Please do not rezone Wingate East. Mosaic purchased the property designed as "agriculture," therefore there is no required expectation to rezone it to "extraction." Otherwise it means they can purchase whatever they wish and use it without any significant County control or oversight to the detriment of our citizens. Please do not give into fear of their "threatened stick" of litigation. The "carrot" proposed of 2+ million dollars and the established Duette firehouse does not compensate for the damage to headwaters of Myakka River. The impact would be tragic because after removing the existing strata, it is impossible to restore it's former environmental flora and fauna biodiversity. Negative human impact will be greater. Even if the extensive water use in processing and adding to the 25 huge toxic stacks are placed elsewhere as in Lake Wales, Manatee County will gradually receive its affects. The enormous toxic phosphate gypsum stacks and slime pools are permanent, impossible to remove, and will eventually breach or sink into our Florida aquifer harming our surface and ground water. It is only a matter of time. For Manatee's near present and future well being reject the rezoning to extraction, help us.

Sincerely, Linda Vertefeuille ( long term Manatee resident)

## Bobbi Roy

---

**From:** Emmy Landrum  
**Sent:** Thursday, February 09, 2017 3:10 PM  
**To:** jennroseurban@gmail.com  
**Cc:** Bobbi Roy; Debbie Bassett  
**Subject:** RE: mosaic

### Wingate East - Z-14-09 – Mosaic Fertilizer, LLC/Wingate East

Thank you for writing to the Board of County Commissioners to express your concerns regarding this project. Your comments will be shared with staff from Building and Development Services and the County Attorney's Office and provided to the Clerk for the official record when the hearing continues on Wednesday, February 15, 2017.

On behalf of Chairman Benac and the other Commissioners, thank you for your interest and participation.

*Emmy Landrum*  
*Executive Assistant*  
Board of County Commissioners  
Phone (941) 745-3709  
Fax (941) 745-3790  
[emmy.landrum@mymanatee.org](mailto:emmy.landrum@mymanatee.org)



**From:** Jennifer Urban [mailto:[jennroseurban@gmail.com](mailto:jennroseurban@gmail.com)]  
**Sent:** Monday, February 06, 2017 11:55 AM  
**To:** Priscilla WhisenantTrace <[priscilla.whisenanttrace@mymanatee.org](mailto:priscilla.whisenanttrace@mymanatee.org)>; Charles Smith <[Charles.Smith@mymanatee.org](mailto:Charles.Smith@mymanatee.org)>; Stephen R Jonsson <[steve.jonsson@mymanatee.org](mailto:steve.jonsson@mymanatee.org)>; Robin DiSabatino <[robin.disabatino@mymanatee.org](mailto:robin.disabatino@mymanatee.org)>; Vanessa Baugh <[vanessa.baugh@mymanatee.org](mailto:vanessa.baugh@mymanatee.org)>; Carol Whitmore <[carol.whitmore@mymanatee.org](mailto:carol.whitmore@mymanatee.org)>; Betsy Benac <[betsy.benac@mymanatee.org](mailto:betsy.benac@mymanatee.org)>  
**Subject:** mosaic

Hello, my name is Jennifer Urban. I am writing to inform the Board of County Commissioners that I oppose Mosaic Co.'s request to rezone 3,800 acres of land in order to expand their phosphate mining operations in Manatee County. I live in Myakka and get my families water supply from our well. After recent incidents in neighboring counties with radio active material leaking into water sources I URGE the county to oppose Mosaic's request.

Phosphate mining produces millions of tons of radioactive waste per year which contaminates air and water. It also destroys ecosystems and land, which is never returned to its previous state. In the best interests of the people of Manatee County, I urge (the Board of County Commissioners to vote against Mosaic's request on February 15, 2017.

Thank you.

~Jenn Urban



## Bobbi Roy

---

**From:** Emmy Landrum  
**Sent:** Thursday, February 09, 2017 3:10 PM  
**To:** ineedbeach@yahoo.com  
**Cc:** Bobbi Roy; Debbie Bassett  
**Subject:** RE: vote NO to mosaic

### Wingate East - Z-14-09 – Mosaic Fertilizer, LLC/Wingate East

Thank you for writing to the Board of County Commissioners to express your concerns regarding this project. Your comments will be shared with staff from Building and Development Services and the County Attorney's Office and provided to the Clerk for the official record when the hearing continues on Wednesday, February 15, 2017.

On behalf of Chairman Benac and the other Commissioners, thank you for your interest and participation.

Emmy Landrum  
Executive Assistant  
Board of County Commissioners  
Phone (941) 745-3709  
Fax (941) 745-3790  
[emmy.landrum@mymanatee.org](mailto:emmy.landrum@mymanatee.org)



---

**From:** ineedbeach@yahoo.com [mailto:ineedbeach@yahoo.com]  
**Sent:** Monday, February 06, 2017 11:23 AM  
**Subject:** vote NO to mosaic

*February 6, 2017*

*Hello, my name is Joan Adamo. I am Writing to inform the Board of Manatee County Commissioners that I oppose Mosaic Co.'s request to rezone 3,800 acres of land in order to expand their phosphate mining operations in Manatee County.*

*Thank You,  
Joan Adamo*

## Bobbi Roy

---

**From:** Emmy Landrum  
**Sent:** Thursday, February 09, 2017 3:10 PM  
**To:** WrackerL  
**Cc:** Bobbi Roy; Debbie Bassett  
**Subject:** RE: Vote No to Mosaic

### Wingate East - Z-14-09 – Mosaic Fertilizer, LLC/Wingate East

Thank you for writing to the Board of County Commissioners to express your concerns regarding this project. Your comments will be shared with staff from Building and Development Services and the County Attorney's Office and provided to the Clerk for the official record when the hearing continues on Wednesday, February 15, 2017.

On behalf of Chairman Benac and the other Commissioners, thank you for your interest and participation.

Emmy Landrum  
Executive Assistant  
Board of County Commissioners  
Phone (941) 745-3709  
Fax (941) 745-3790  
[emmy.landrum@mymanatee.org](mailto:emmy.landrum@mymanatee.org)



---

**From:** WrackerL [mailto:wrackerl@yahoo.com]  
**Sent:** Monday, February 06, 2017 11:20 AM  
**To:** Priscilla WhisenantTrace <priscilla.whisenanttrace@mymanatee.org>; Charles Smith <Charles.Smith@mymanatee.org>; Stephen R Jonsson <steve.jonsson@mymanatee.org>; Robin DiSabatino <robin.disabatino@mymanatee.org>; Vanessa Baugh <vanessa.baugh@mymanatee.org>; Carol Whitmore <carol.whitmore@mymanatee.org>; Betsy Benac <betsy.benac@mymanatee.org>  
**Subject:** Vote No to Mosaic

*February 6, 2017*

*Hello, my name is Laura Wracker. I am Writing to inform the Board of Manatee County Commissioners that I oppose Mosaic Co.'s request to rezone 3,800 acres of land in order to expand their phosphate mining operations in Manatee County.*

*Phosphate mining produces millions of tons of radioactive waste per year which contaminates air and water. It also destroys ecosystems and land, which is never returned to its previous state. In the best interests of the people of Manatee County, I urge the Board of Manatee County Commissioners to vote against Mosaic's request on February 15, 2017.*

*Thank you.*

*Laura Wracker*

## **Bobbi Roy**

---

**From:** Carol Whitmore  
**Sent:** Monday, February 06, 2017 10:35 AM  
**To:** Bobbi Roy; William Clague  
**Subject:** Facebook-Glen Gibellina-mosaic  
**Attachments:** IMG\_2654.PNG; ATT00001.txt; IMG\_2655.PNG; ATT00002.txt; IMG\_2656.PNG; ATT00003.txt



**Water quality still a fear as crews fill massive amounts of concrete into toxic Mosaic sink...**

**DOWNLOAD: Free WFTV News & Weather Apps**

[wftv.com](http://wftv.com)



8:13 AM

**Glenn, leave  
me alone.  
You know**

**I'm not  
supposed  
to have  
anything to  
do with this  
issue. I am  
not going to  
respond**

**OK I respect  
your**



**do with this  
issue. I am  
not going to  
respond**

**OK I respect  
your  
wishes....se  
e you on the  
15th**



## Bobbi Roy

---

**From:** Emmy Landrum  
**Sent:** Thursday, February 09, 2017 3:10 PM  
**To:** alan@travelingalansway.com  
**Cc:** Bobbi Roy; Debbie Bassett  
**Subject:** RE: Mosaic

### Wingate East - Z-14-09 – Mosaic Fertilizer, LLC/Wingate East

Thank you for writing to the Board of County Commissioners to express your concerns regarding this project. Your comments will be shared with staff from Building and Development Services and the County Attorney's Office and provided to the Clerk for the official record when the hearing continues on Wednesday, February 15, 2017.

On behalf of Chairman Benac and the other Commissioners, thank you for your interest and participation.

*Emmy Landrum*  
*Executive Assistant*  
Board of County Commissioners  
Phone (941) 745-3709  
Fax (941) 745-3790  
[emmy.landrum@mymanatee.org](mailto:emmy.landrum@mymanatee.org)



---

**From:** alan@travelingalansway.com [mailto:alan@backteestours.com]  
**Sent:** Monday, February 06, 2017 9:35 AM  
**To:** Betsy Benac <betsy.benac@mymanatee.org>  
**Subject:** Mosaic

I hope you do not allow Mosaic to expand their operations

Alan Clark



## Bobbi Roy

---

**From:** Emmy Landrum  
**Sent:** Thursday, February 09, 2017 3:10 PM  
**To:** Jo Williams  
**Cc:** Bobbi Roy; Debbie Bassett  
**Subject:** RE: Mosaic approval

### Wingate East - Z-14-09 – Mosaic Fertilizer, LLC/Wingate East

Thank you for writing to the Board of County Commissioners to express your concerns regarding this project. Your comments will be shared with staff from Building and Development Services and the County Attorney's Office and provided to the Clerk for the official record when the hearing continues on Wednesday, February 15, 2017.

On behalf of Chairman Benac and the other Commissioners, thank you for your interest and participation.

*Emmy Landrum*  
*Executive Assistant*  
Board of County Commissioners  
Phone (941) 745-3709  
Fax (941) 745-3790  
**emmy.landrum@mymanatee.org**



-----Original Message-----

From: Jo Williams [mailto:jowms@tampabay.rr.com]  
Sent: Monday, February 06, 2017 8:33 AM  
To: Priscilla WhisenantTrace <priscilla.whisenanttrace@mymanatee.org>; Charles Smith <Charles.Smith@mymanatee.org>; Stephen R Jonsson <steve.jonsson@mymanatee.org>; Robin DiSabatino <robin.disabatino@mymanatee.org>; Vanessa Baugh <vanessa.baugh@mymanatee.org>; Carol Whitmore <carol.whitmore@mymanatee.org>; Betsy Benac <betsy.benac@mymanatee.org>  
Subject: Mosaic approval

Dear Commissioner,

When you finally cast your vote regarding Mosaic's continued devastation of good agricultural land, please, please remember that this company's purpose- to extract phosphate from the earth for fertilizer - wrecks more environmental harm to the world than it helps. Because modern methods of organic farming nourish the soil while at the same time diminishing the need for Mosaic's product. When push comes to shove, don't you prefer to eat organic? Jo Williams

## Bobbi Roy

---

**From:** Emmy Landrum  
**Sent:** Thursday, February 09, 2017 3:10 PM  
**To:** Kathy Bondur  
**Cc:** Bobbi Roy; Debbie Bassett  
**Subject:** RE: Mosaic

### Wingate East - Z-14-09 – Mosaic Fertilizer, LLC/Wingate East

Thank you for writing to the Board of County Commissioners to express your concerns regarding this project. Your comments will be shared with staff from Building and Development Services and the County Attorney's Office and provided to the Clerk for the official record when the hearing continues on Wednesday, February 15, 2017.

On behalf of Chairman Benac and the other Commissioners, thank you for your interest and participation.

*Emmy Landrum*  
*Executive Assistant*  
Board of County Commissioners  
Phone (941) 745-3709  
Fax (941) 745-3790  
**emmy.landrum@mymanatee.org**



---

**From:** Kathy Bondur [mailto:kbfl@comcast.net]  
**Sent:** Sunday, February 05, 2017 3:13 PM  
**To:** Charles Smith <Charles.Smith@mymanatee.org>  
**Subject:** Mosaic

I request that you vote AGAINST Mosaic's request to phosphate mine in Manatee County.

Kathy Bondur  
University Park

## Bobbi Roy

---

**From:** Emmy Landrum  
**Sent:** Thursday, February 09, 2017 3:09 PM  
**To:** fslack@tampabay.rr.com  
**Cc:** Bobbi Roy; Debbie Bassett  
**Subject:** RE: Mosaic expansion

### Wingate East - Z-14-09 – Mosaic Fertilizer, LLC/Wingate East

Thank you for writing to the Board of County Commissioners to express your concerns regarding this project. Your comments will be shared with staff from Building and Development Services and the County Attorney's Office and provided to the Clerk for the official record when the hearing continues on Wednesday, February 15, 2017.

On behalf of Chairman Benac and the other Commissioners, thank you for your interest and participation.

*Emmy Landrum*  
*Executive Assistant*  
Board of County Commissioners  
Phone (941) 745-3709  
Fax (941) 745-3790  
**emmy.landrum@mymanatee.org**



---

**From:** fslack@tampabay.rr.com [mailto:fslack@tampabay.rr.com]  
**Sent:** Sunday, February 05, 2017 1:15 PM  
**To:** Priscilla WhisenantTrace <priscilla.whisenanttrace@mymanatee.org>; Charles Smith <Charles.Smith@mymanatee.org>; Stephen R Jonsson <steve.jonsson@mymanatee.org>; Robin DiSabatino <robin.disabatino@mymanatee.org>; Vanessa Baugh <vanessa.baugh@mymanatee.org>; Carol Whitmore <carol.whitmore@mymanatee.org>; Betsy Benac <betsy.benac@mymanatee.org>  
**Subject:** Mosaic expansion

To all Commissioners:

Continuing the Mosaic expansion question to February 15 makes it impossible for me to attend the meeting. The public opposition to further expansion and poisoning of our lands should be sufficient to ensure a refusal of the Mosaic request. They have prospered sufficiently from despoiling our environment. It is time to consider the good of the people and our county.

Please refuse Mosaic.

francine slack  
holmes beach, fl  
941 778 3444

## Bobbi Roy

---

**From:** Marianne Lopata  
**Sent:** Friday, February 03, 2017 3:15 PM  
**To:** Betsy Benac; Carol Whitmore; Charles Smith; Priscilla WhisenantTrace; Robin DiSabatino; Stephen R Jonsson; Vanessa Baugh  
**Cc:** Bobbi Roy; Debbie Bassett; Nicole Knapp; 'Jacki Lopez'  
**Subject:** FW: Public comments - Wingate East - Z-14-09 – Mosaic Fertilizer, LLC/Wingate East  
**Attachments:** RE: Public comments re Res. No. 17-017, Z-14-09, DTS20140547 - Mosaic Fertilizer, LLC;  
RE: Public comments re Res. No. 17-017, Z-14-09, DTS20140547 - Mosaic Fertilizer, LLC;  
Stricker 1996.pdf

Commissioners, it seems that the CSA Study referenced in one of Ms. Lopez's email was not included in the previous email, but is attached hereto.

---

**From:** Marianne Lopata  
**Sent:** Friday, February 03, 2017 3:08 PM  
**To:** Betsy Benac; Carol Whitmore; Charles Smith; Priscilla WhisenantTrace; Robin DiSabatino; Stephen R Jonsson; Vanessa Baugh  
**Cc:** 'Jacki Lopez'; Bobbi Roy; Debbie Bassett; Nicole Knapp  
**Subject:** Public comments - Wingate East - Z-14-09 – Mosaic Fertilizer, LLC/Wingate East

Commissioners, attached is recent communications from Ms. Jacki Lopez for your review which will be included in the official record for the public hearing regarding Wingate East - Z-14-09 – Mosaic Fertilizer, LLC/Wingate East.

### *Marianne Lopata*

Executive Administrative Assistant  
Board of County Commissioners  
Phone: (941) 745-3707; Fax: (941) 745-3790  
E-mail: [marianne.lopata@mymanatee.org](mailto:marianne.lopata@mymanatee.org)



**From:** Jacki Lopez [<mailto:jlopez@biologicaldiversity.org>]  
**Sent:** Friday, February 03, 2017 2:43 PM  
**To:** Bobbi Roy; Marianne Lopata  
**Cc:** Nicole Knapp  
**Subject:** RE: Public comments re Res. No. 17-017, Z-14-09, DTS20140547 - Mosaic Fertilizer, LLC

I'm writing to confirm that this communication is being forwarded to the Commissioners and will be part of the substantial and competent evidence it considers in the record.

Thank you

Jacki

## Bobbi Roy

---

**From:** Emmy Landrum  
**Sent:** Thursday, February 09, 2017 3:09 PM  
**To:** Kendel Wilson  
**Cc:** Bobbi Roy; Debbie Bassett  
**Subject:** RE: Mosaic phosphate mining in Manatee County

### Wingate East - Z-14-09 – Mosaic Fertilizer, LLC/Wingate East

Thank you for writing to the Board of County Commissioners to express your concerns regarding this project. Your comments will be shared with staff from Building and Development Services and the County Attorney's Office and provided to the Clerk for the official record when the hearing continues on Wednesday, February 15, 2017.

On behalf of Chairman Benac and the other Commissioners, thank you for your interest and participation.

*Emmy Landrum*  
*Executive Assistant*  
Board of County Commissioners  
Phone (941) 745-3709  
Fax (941) 745-3790  
[emmy.landrum@mymanatee.org](mailto:emmy.landrum@mymanatee.org)



**From:** Kendel Wilson [mailto:kwwaterpumps@gmail.com]  
**Sent:** Friday, February 03, 2017 9:29 AM  
**To:** Priscilla WhisenantTrace <priscilla.whisenantrace@mymanatee.org>; Charles Smith <Charles.Smith@mymanatee.org>; Stephen R Jonsson <steve.jonsson@mymanatee.org>; Robin DiSabatino <robin.disabatino@mymanatee.org>; Vanessa Baugh <vanessa.baugh@mymanatee.org>; Carol Whitmore <carol.whitmore@mymanatee.org>; Betsy Benac <betsy.benac@mymanatee.org>  
**Subject:** Mosaic phosphate mining in Manatee County

Please do not allow a mosaic to do anymore mining in Manatee County and destroy are rivers and Wildlife

## Bobbi Roy

---

**From:** Emmy Landrum  
**Sent:** Thursday, February 09, 2017 3:09 PM  
**To:** Herman Connatser  
**Cc:** Bobbi Roy; Debbie Bassett  
**Subject:** RE: Mosaic Application

### Wingate East - Z-14-09 – Mosaic Fertilizer, LLC/Wingate East

Thank you for writing to the Board of County Commissioners to express your concerns regarding this project. Your comments will be shared with staff from Building and Development Services and the County Attorney's Office and provided to the Clerk for the official record when the hearing continues on Wednesday, February 15, 2017.

On behalf of Chairman Benac and the other Commissioners, thank you for your interest and participation.

*Emmy Landrum*  
*Executive Assistant*  
Board of County Commissioners  
Phone (941) 745-3709  
Fax (941) 745-3790  
[emmy.landrum@mymanatee.org](mailto:emmy.landrum@mymanatee.org)



-----Original Message-----

**From:** Herman Connatser [mailto:hcon5391@hotmail.com]  
**Sent:** Thursday, February 02, 2017 4:32 PM  
**To:** Priscilla WhisenantTrace <priscilla.whisenanttrace@mymanatee.org>; Charles Smith <Charles.Smith@mymanatee.org>; Stephen R Jonsson <steve.jonsson@mymanatee.org>; Robin DiSabatino <robin.disabatino@mymanatee.org>; Vanessa Baugh <vanessa.baugh@mymanatee.org>; Carol Whitmore <carol.whitmore@mymanatee.org>; Betsy Benac <betsy.benac@mymanatee.org>  
**Subject:** Mosaic Application

To my County Commissioners my Husband and I want to express my concerns for the Wingate East application by Mosaic. I live at 44515 Highway 64E., which is just a little East of Wauchula Road. I have worked my entire life pulled out all of my life savings purchased 6 acres and a Home and put all my money into it. The Myakka River runs less than a quarter of a mile behind my property line and when the river is high it literally runs onto my property. Just like every other resident out here I do live off of a well it is our only water source. I am very disappointed that Manatee County would even consider allowing Mosaic to destroy more property and wetlands and now the rivers in Manatee County. Just look at the path of destruction they have left behind so far. If I would have known that this was even a possibility I would have never moved from Sarasota County to Manatee County. I urge you the Commissioners to protect the residents. From what I have read they are not creating any new jobs it just does not make sense and it is not doing anything for the future growth of our East Manatee County. Please say "NO" to Mosaic and the people will stand behind Manatee County. Do not submit to their demands.

Respectfully,





## Bobbi Roy

---

**From:** Emmy Landrum  
**Sent:** Thursday, February 09, 2017 3:08 PM  
**To:** april reynolds  
**Cc:** Bobbi Roy; Debbie Bassett  
**Subject:** RE: Please say no to mosaic

### Wingate East - Z-14-09 – Mosaic Fertilizer, LLC/Wingate East

Thank you for writing to the Board of County Commissioners to express your concerns regarding this project. Your comments will be shared with staff from Building and Development Services and the County Attorney's Office and provided to the Clerk for the official record when the hearing continues on Wednesday, February 15, 2017.

On behalf of Chairman Benac and the other Commissioners, thank you for your interest and participation.

*Emmy Landrum*  
*Executive Assistant*  
Board of County Commissioners  
Phone (941) 745-3709  
Fax (941) 745-3790  
**emmy.landrum@mymanatee.org**



**From:** april reynolds [mailto:mysonsmom.2@gmail.com]  
**Sent:** Thursday, February 02, 2017 3:33 PM  
**To:** Priscilla WhisenantTrace <priscilla.whisenantrace@mymanatee.org>; Charles Smith <Charles.Smith@mymanatee.org>; Stephen R Jonsson <steve.jonsson@mymanatee.org>; Robin DiSabatino <robin.disabatino@mymanatee.org>; Vanessa Baugh <vanessa.baugh@mymanatee.org>; Carol Whitmore <carol.whitmore@mymanatee.org>; Betsy Benac <betsy.benac@mymanatee.org>  
**Subject:** Please say no to mosaic

I live in Myakka City off of Verna Bethany rd. Please do not let Mosaic start extraction mining.  
April Reynolds

## Bobbi Roy

---

**From:** Emmy Landrum  
**Sent:** Thursday, February 09, 2017 3:07 PM  
**To:** DADAMM@aol.com  
**Cc:** Bobbi Roy; Debbie Bassett  
**Subject:** RE: Rezoning of Mosaic property

### Wingate East - Z-14-09 – Mosaic Fertilizer, LLC/Wingate East

Thank you for writing to the Board of County Commissioners to express your concerns regarding this project. Your comments will be shared with staff from Building and Development Services and the County Attorney's Office and provided to the Clerk for the official record when the hearing continues on Wednesday, February 15, 2017.

On behalf of Chairman Benac and the other Commissioners, thank you for your interest and participation.

*Emmy Landrum*  
*Executive Assistant*  
Board of County Commissioners  
Phone (941) 745-3709  
Fax (941) 745-3790  
[emmy.landrum@mymanatee.org](mailto:emmy.landrum@mymanatee.org)



---

**From:** DADAMM@aol.com [mailto:DADAMM@aol.com]  
**Sent:** Thursday, February 02, 2017 11:50 AM  
**To:** Priscilla WhisenantTrace <priscilla.whisenanttrace@mymanatee.org>; Charles Smith <Charles.Smith@mymanatee.org>; Stephen R Jonsson <steve.jonsson@mymanatee.org>; Robin DiSabatino <robin.disabatino@mymanatee.org>; Vanessa Baugh <vanessa.baugh@mymanatee.org>; Carol Whitmore <carol.whitmore@mymanatee.org>; Betsy Benac <betsy.benac@mymanatee.org>  
**Subject:** Rezoning of Mosaic property

Manatee County Commissioners,  
Please take the time to consider the residents living in Manatee County. What good are millions of tax dollars if your water even has a remote possibility of becoming contaminated?  
Is Mosaic really a protector of the environment if they are aware that contaminated water has leaked into the aquifer and they do not notify anyone until they are caught by the media?  
Are we really supposed to trust a company that expects the citizens to believe they are "containing" the contaminated water on their own property, when in fact they do not have the ability to do that.

When are you going to consider the residents who bought agricultural zoned property and now they will be living next to an extraction site? Who exactly is going to repay them for the reduction in their quality of life and the loss in property value?

Please vote no to Mosaic's request to rezone.

Sincerely,

Diana Adams

## Bobbi Roy

---

**From:** Emmy Landrum  
**Sent:** Thursday, February 09, 2017 3:07 PM  
**To:** Michelle Powell  
**Cc:** Bobbi Roy; Debbie Bassett  
**Subject:** RE: Phospate Mining

### Wingate East - Z-14-09 – Mosaic Fertilizer, LLC/Wingate East

Thank you for writing to the Board of County Commissioners to express your concerns regarding this project. Your comments will be shared with staff from Building and Development Services and the County Attorney's Office and provided to the Clerk for the official record when the hearing continues on Wednesday, February 15, 2017.

On behalf of Chairman Benac and the other Commissioners, thank you for your interest and participation.

*Emmy Landrum*  
*Executive Assistant*  
Board of County Commissioners  
Phone (941) 745-3709  
Fax (941) 745-3790  
[emmy.landrum@mymanatee.org](mailto:emmy.landrum@mymanatee.org)



**From:** Michelle Powell [<mailto:michellepowell09@gmail.com>]  
**Sent:** Thursday, February 02, 2017 11:21 AM  
**To:** Priscilla WhisenantTrace <[priscilla.whisenanttrace@mymanatee.org](mailto:priscilla.whisenanttrace@mymanatee.org)>; Charles Smith <[Charles.Smith@mymanatee.org](mailto:Charles.Smith@mymanatee.org)>; Stephen R Jonsson <[steve.jonsson@mymanatee.org](mailto:steve.jonsson@mymanatee.org)>; Robin DiSabatino <[robin.disabatino@mymanatee.org](mailto:robin.disabatino@mymanatee.org)>; Vanessa Baugh <[vanessa.baugh@mymanatee.org](mailto:vanessa.baugh@mymanatee.org)>; Carol Whitmore <[carol.whitmore@mymanatee.org](mailto:carol.whitmore@mymanatee.org)>; Betsy Benac <[betsy.benac@mymanatee.org](mailto:betsy.benac@mymanatee.org)>  
**Subject:** Phospate Mining

I am a citizen and tax-payer of South West Florida and I am asking you to please vote "NO" on February 15, 2017 regarding Mosaic phosphate mining of 3600 acres in the Myakka & Peace River. We must preserve the safety our environment, our wild-life and our paradise way of life now and for the future generations of Sarasota County.

Thank you,

Michelle Powell  
Venice, FL

## Bobbi Roy

---

**From:** Emmy Landrum  
**Sent:** Thursday, February 09, 2017 3:07 PM  
**To:** Bryson, Diane  
**Cc:** Bobbi Roy; Debbie Bassett  
**Subject:** RE: BAN PHOSPHATE MINING - MOSAIC - VOTE NO

### Wingate East - Z-14-09 – Mosaic Fertilizer, LLC/Wingate East

Thank you for writing to the Board of County Commissioners to express your concerns regarding this project. Your comments will be shared with staff from Building and Development Services and the County Attorney's Office and provided to the Clerk for the official record when the hearing continues on Wednesday, February 15, 2017.

On behalf of Chairman Benac and the other Commissioners, thank you for your interest and participation.

*Emmy Landrum*  
*Executive Assistant*  
Board of County Commissioners  
Phone (941) 745-3709  
Fax (941) 745-3790  
[emmy.landrum@mymanatee.org](mailto:emmy.landrum@mymanatee.org)



---

**From:** Bryson, Diane [mailto:diane.bryson@nrtseast.com]  
**Sent:** Thursday, February 02, 2017 9:48 AM  
**To:** Priscilla WhisenantTrace <priscilla.whisenantrace@mymanatee.org>; Charles Smith <Charles.Smith@mymanatee.org>; Stephen R Jonsson <steve.jonsson@mymanatee.org>; Robin DiSabatino <robin.disabatino@mymanatee.org>; Vanessa Baugh <vanessa.baugh@mymanatee.org>; Carol Whitmore <carol.whitmore@mymanatee.org>; Betsy Benac <betsy.benac@mymanatee.org>  
**Subject:** BAN PHOSPHATE MINING - MOSAIC - VOTE NO  
**Importance:** High

Good morning,

My family and I have lived in Myakka City for 17 years.  
The Board of County Commissioners need to vote NO to Mosaic mining.  
**I do not want Mosaic to destroy more land!**

They have already damaged thousands of acres of land and seriously damaged our aquifer.  
This has polluted the water and has made many people very ill.

***The population in Myakka City is totally dependent on well water.***

*Everywhere* they have mined phosphate they have chased away wildlife from their natural habitat.

Like many others that live here, we moved to Myakka City to enjoy the natural wildlife, and now it is being chased away!

*Do not grant them more land to destroy!*

**We elected you and this is your responsibility to take care of our needs and concerns.**

Thank you for your attention to this very important matter.

Regards,  
Diane Bryson  
14240 Sugar bowl Road  
Myakka City, FL 34251

---

 Please consider the environment before printing this e-mail

The information in this electronic mail message is the sender's confidential business and may be legally privileged. It is intended solely for the addressee(s). Access to this internet electronic mail message by anyone else is unauthorized. If you are not the intended recipient, any disclosure, copying, distribution or any action taken or omitted to be taken in reliance on it is prohibited and may be unlawful. The sender believes that this E-mail and any attachments were free of any virus, worm, Trojan horse, and/or malicious code when sent. This message and its attachments could have been infected during transmission. By reading the message and opening any attachments, the recipient accepts full responsibility for taking protective and remedial action about viruses and other defects. The sender's employer is not liable for any loss or damage arising in any way.

## Bobbi Roy

---

**From:** Emmy Landrum  
**Sent:** Thursday, February 09, 2017 3:07 PM  
**To:** Brenda  
**Cc:** Bobbi Roy; Debbie Bassett  
**Subject:** RE: Object to the mining of mosaic

### Wingate East - Z-14-09 – Mosaic Fertilizer, LLC/Wingate East

Thank you for writing to the Board of County Commissioners to express your concerns regarding this project. Your comments will be shared with staff from Building and Development Services and the County Attorney's Office and provided to the Clerk for the official record when the hearing continues on Wednesday, February 15, 2017.

On behalf of Chairman Benac and the other Commissioners, thank you for your interest and participation.

*Emmy Landrum*  
*Executive Assistant*  
Board of County Commissioners  
Phone (941) 745-3709  
Fax (941) 745-3790  
**emmy.landrum@mymanatee.org**



-----Original Message-----

From: Brenda [mailto:palmettobrenda@gmail.com]  
Sent: Thursday, February 02, 2017 8:56 AM  
To: Priscilla WhisenantTrace <priscilla.whisenanttrace@mymanatee.org>; Charles Smith <Charles.Smith@mymanatee.org>; Stephen R Jonsson <steve.jonsson@mymanatee.org>; Robin DiSabatino <robin.disabatino@mymanatee.org>; Vanessa Baugh <vanessa.baugh@mymanatee.org>; Carol Whitmore <carol.whitmore@mymanatee.org>; Betsy Benac <betsy.benac@mymanatee.org>  
Subject: Object to the mining of mosaic

Sent from my iPhone

Last year in January we signed a lease purchase agreement for 5 acres in Manatee County I also object to the mosaic minding in our area i'd like to make a future family home for years to come bring kids to enjoy great grands to pass on please take in consideration of all these families and homes properties for farmers That are becoming obsolete this also would be something that destroys more than half of them Please reconsider that maybe some of your children your grandkids would love to enjoy the east

## Bobbi Roy

---

**From:** Emmy Landrum  
**Sent:** Thursday, February 09, 2017 3:07 PM  
**To:** Lisa Smith  
**Cc:** Bobbi Roy; Debbie Bassett  
**Subject:** RE: Phosphate Mining Myakka

### Wingate East - Z-14-09 – Mosaic Fertilizer, LLC/Wingate East

Thank you for writing to the Board of County Commissioners to express your concerns regarding this project. Your comments will be shared with staff from Building and Development Services and the County Attorney's Office and provided to the Clerk for the official record when the hearing continues on Wednesday, February 15, 2017.

On behalf of Chairman Benac and the other Commissioners, thank you for your interest and participation.

*Emmy Landrum*  
*Executive Assistant*  
Board of County Commissioners  
Phone (941) 745-3709  
Fax (941) 745-3790  
**emmy.landrum@mymanatee.org**



---

**From:** Lisa Smith [mailto:lisa@kevinwoodgroup.com]  
**Sent:** Wednesday, February 01, 2017 4:55 PM  
**To:** Priscilla WhisenantTrace <priscilla.whisenanttrace@mymanatee.org>; Charles Smith <Charles.Smith@mymanatee.org>; Stephen R Jonsson <steve.jonsson@mymanatee.org>; Robin DiSabatino <robin.disabatino@mymanatee.org>; Vanessa Baugh <vanessa.baugh@mymanatee.org>; Carol Whitmore <carol.whitmore@mymanatee.org>; Betsy Benac <betsy.benac@mymanatee.org>  
**Subject:** Phosphate Mining Myakka  
**Importance:** High

I am writing as a full time resident of this area to ask you to vote NO on the Mosaic Phosphate Mining bill on February 15<sup>th</sup>, 2017. Myakka & Peace River are treasures to this area and any mining risks to them and the wildlife and residents around them is unacceptable.

Thank you,

Lisa Smith  
818 Golf Drive  
Venice FL, 34285



## Bobbi Roy

---

**From:** Emmy Landrum  
**Sent:** Thursday, February 09, 2017 3:06 PM  
**To:** Docnick  
**Cc:** Bobbi Roy; Debbie Bassett  
**Subject:** RE: Mosaic East Manatee Mining Application

### Wingate East - Z-14-09 – Mosaic Fertilizer, LLC/Wingate East

Thank you for writing to the Board of County Commissioners to express your concerns regarding this project. Your comments will be shared with staff from Building and Development Services and the County Attorney's Office and provided to the Clerk for the official record when the hearing continues on Wednesday, February 15, 2017.

On behalf of Chairman Benac and the other Commissioners, thank you for your interest and participation.

*Emmy Landrum*  
*Executive Assistant*  
Board of County Commissioners  
Phone (941) 745-3709  
Fax (941) 745-3790  
[emmy.landrum@mymanatee.org](mailto:emmy.landrum@mymanatee.org)



---

**From:** Docnick [mailto:docnick233@aol.com]  
**Sent:** Wednesday, February 01, 2017 1:37 PM  
**To:** Priscilla WhisenantTrace <priscilla.whisenanttrace@mymanatee.org>; Charles Smith <Charles.Smith@mymanatee.org>; Stephen R Jonsson <steve.jonsson@mymanatee.org>; Robin DiSabatino <robin.disabatino@mymanatee.org>; Vanessa Baugh <vanessa.baugh@mymanatee.org>; Carol Whitmore <carol.whitmore@mymanatee.org>; Betsy Benac <betsy.benac@mymanatee.org>  
**Subject:** Mosaic East Manatee Mining Application

Hello Commissioners,

I am writing into to you today to voice my concerns for the Mosaic Wingate East Mining Application. I am a Vietnam Combat Veteran and I have fought and protected this Great Country of ours. I also, have been watching what is happening in our Eastern Manatee County and hope that you will fight for the citizens of Manatee and surrounding Counties as they should NOT have to worry about all of the potential hazards that phosphate mining carries with it. Water is a vital resource to all of the residents in Manatee and other affected counties and would urge you our Manatee County Commissioners to NOT permit this type of toxins to be anywhere near our water source or the citizens of this great County. Manatee County wetlands are a very important part of what makes Manatee County so great and needs to be protected from all of the potential hazards that this phosphate mining poses. This entire 3600Acres could be used for so much more and bring so many benefits to Manatee County for generations to come. That is what I fought for my people and you all need to do the same. I urge all of you to vote "NO" and not permit this application and all it entails to become a terrible chapter in our Beautiful Manatee County history books.

Thank you for your service and your time!  
Concerned,  
George Nicolay  
Vietnam Combat Veteran

## Bobbi Roy

---

**From:** Emmy Landrum  
**Sent:** Thursday, February 09, 2017 3:06 PM  
**To:** Dee Anne  
**Cc:** Bobbi Roy; Debbie Bassett  
**Subject:** RE: Mosaic

### Wingate East - Z-14-09 – Mosaic Fertilizer, LLC/Wingate East

Thank you for writing to the Board of County Commissioners to express your concerns regarding this project. Your comments will be shared with staff from Building and Development Services and the County Attorney's Office and provided to the Clerk for the official record when the hearing continues on Wednesday, February 15, 2017.

On behalf of Chairman Benac and the other Commissioners, thank you for your interest and participation.

*Emmy Landrum*  
*Executive Assistant*  
Board of County Commissioners  
Phone (941) 745-3709  
Fax (941) 745-3790  
[emmy.landrum@mymanatee.org](mailto:emmy.landrum@mymanatee.org)



**From:** Dee Anne [mailto:[purple0vr@aol.com](mailto:purple0vr@aol.com)]  
**Sent:** Wednesday, February 01, 2017 1:00 PM  
**To:** Priscilla WhisenantTrace <[priscilla.whisenanttrace@mymanatee.org](mailto:priscilla.whisenanttrace@mymanatee.org)>; Charles Smith <[Charles.Smith@mymanatee.org](mailto:Charles.Smith@mymanatee.org)>; Stephen R Jonsson <[steve.jonsson@mymanatee.org](mailto:steve.jonsson@mymanatee.org)>; Robin DiSabatino <[robin.disabatino@mymanatee.org](mailto:robin.disabatino@mymanatee.org)>; Vanessa Baugh <[vanessa.baugh@mymanatee.org](mailto:vanessa.baugh@mymanatee.org)>; Carol Whitmore <[carol.whitmore@mymanatee.org](mailto:carol.whitmore@mymanatee.org)>; Betsy Benac <[betsy.benac@mymanatee.org](mailto:betsy.benac@mymanatee.org)>  
**Subject:** Mosaic

To Whom it May Concern,

I am writing to you to request that you vote "NO" on February 15, 2017, to not grant access to Mosaic to mine for phosphate on the 3600 acres in the Myakka and Peace Rivers.

This company had a massive breach at their mine, that they did not report. A news helicopter discovered it several days after it had begun and broke the story. I believe that a company that would deceive the public in the face of a very serious breach that impacts the Floridian Aquifer, which provides drinking water to the entire state, does not deserve consideration in such an endeavor. It poses too great of a threat to the environment and our citizens.

Thank you for your consideration in this matter.

Sincerely,

Dee Anne Reppucci

## Bobbi Roy

---

**From:** Emmy Landrum  
**Sent:** Thursday, February 09, 2017 3:06 PM  
**To:** Steve Foss  
**Cc:** Bobbi Roy; Debbie Bassett  
**Subject:** RE: Mosaic

### Wingate East - Z-14-09 – Mosaic Fertilizer, LLC/Wingate East

Thank you for writing to the Board of County Commissioners to express your concerns regarding this project. Your comments will be shared with staff from Building and Development Services and the County Attorney's Office and provided to the Clerk for the official record when the hearing continues on Wednesday, February 15, 2017.

On behalf of Chairman Benac and the other Commissioners, thank you for your interest and participation.

*Emmy Landrum*  
*Executive Assistant*  
Board of County Commissioners  
Phone (941) 745-3709  
Fax (941) 745-3790  
[emmy.landrum@mymanatee.org](mailto:emmy.landrum@mymanatee.org)



---

**From:** Steve Foss [mailto:steveffoss@yahoo.com]  
**Sent:** Wednesday, February 01, 2017 12:17 PM  
**To:** Betsy Benac <betsy.benac@mymanatee.org>  
**Subject:** Mosaic

TO: THE MANATEE COUNTY COMMISSIONERS  
REGARDING: MOSAIC APPLICATION TO EXPAND WINGATE EAST MINING  
FACILITY

DEAR COMMISSIONERS:

AS RESIDENTS OF MANATEE COUNTY FOR 30 YEARS, WE ARE OPPOSED TO MOSIAC EXPANDING THEIR WINGATE EAST MINING FACILITY. IT IS CLEAR FROM ALL THE EXPERT TESTIMONY THAT YOU HAVE HEARD THAT BY STRIP MINING OVER 4,000 ACRES OF LAND LOCATED IN MANATEE COUNTY, THAT THEIR MINING OPERATIONS WILL SEVERELY IMPACT THE QUALITY OF OUR WATER BY DESTROYING THE ECOSYSTEM WHICH RECHARGES OUR DRINKING WATER SUPPLY FOR NOT ONLY MANATEE COUNTY BUT SARASOTA COUNTY AS WELL. FOR THE WELFARE OF ALL OF OUR RESIDENTS, THE BOARD MUST DENY MOSAIC'S APPLICATION.

STEPHEN & CHRISTINE FOSS  
604 HILLCREST DRIVE  
BRADENTON, FL. 34209

## Bobbi Roy

---

**From:** Emmy Landrum  
**Sent:** Thursday, February 09, 2017 3:06 PM  
**To:** beachweddingsflorida  
**Cc:** Bobbi Roy; Debbie Bassett  
**Subject:** RE: Mosaic - vote NO

### Wingate East - Z-14-09 – Mosaic Fertilizer, LLC/Wingate East

Thank you for writing to the Board of County Commissioners to express your concerns regarding this project. Your comments will be shared with staff from Building and Development Services and the County Attorney's Office and provided to the Clerk for the official record when the hearing continues on Wednesday, February 15, 2017.

On behalf of Chairman Benac and the other Commissioners, thank you for your interest and participation.

*Emmy Landrum*  
*Executive Assistant*  
Board of County Commissioners  
Phone (941) 745-3709  
Fax (941) 745-3790  
[emmy.landrum@mymanatee.org](mailto:emmy.landrum@mymanatee.org)



---

**From:** beachweddingsflorida [mailto:beachweddingsflorida@yahoo.com]  
**Sent:** Wednesday, February 01, 2017 9:24 AM  
**To:** Priscilla WhisenantTrace <priscilla.whisenanttrace@mymanatee.org>; Charles Smith <Charles.Smith@mymanatee.org>; Stephen R Jonsson <steve.jonsson@mymanatee.org>; Robin DiSabatino <robin.disabatino@mymanatee.org>; Vanessa Baugh <vanessa.baugh@mymanatee.org>; Carol Whitmore <carol.whitmore@mymanatee.org>; Betsy Benac <betsy.benac@mymanatee.org>  
**Subject:** Mosaic - vote NO

Good Morning,

We live in Winding Creek next to Mosaic. We bought our property in 2003 when we were told by the county that no more permits ever would be granted to the old mine that existed at that point.

But look at it now. Lies. Mosaic bought the old mine and got more permits.  
Stop them now before it is too late.

We do not want to get poisoned by their radioactive waste, have our well water poisoned, we do not want a sinkhole like in Mulberry, we want to protect our property values, our wildlife and our lives.

We love Florida and see it getting destroyed by greedy companies like Mosaic .

Think of the residents and Florida first. Vote NO.

Regards,  
Gabriele and Werner Kosak

Sent via the Samsung GALAXY S® 5, an AT&T 4G LTE smartphone

## Bobbi Roy

---

**From:** Emmy Landrum  
**Sent:** Thursday, February 09, 2017 3:05 PM  
**To:** Sandra Ripberger  
**Cc:** Bobbi Roy; Debbie Bassett  
**Subject:** RE: just a note

### Wingate East - Z-14-09 – Mosaic Fertilizer, LLC/Wingate East

Thank you for writing to the Board of County Commissioners to express your concerns regarding this project. Your comments will be shared with staff from Building and Development Services and the County Attorney's Office and provided to the Clerk for the official record when the hearing continues on Wednesday, February 15, 2017.

On behalf of Chairman Benac and the other Commissioners, thank you for your interest and participation.

*Emmy Landrum*  
*Executive Assistant*  
Board of County Commissioners  
Phone (941) 745-3709  
Fax (941) 745-3790  
[emmy.landrum@mymanatee.org](mailto:emmy.landrum@mymanatee.org)



---

**From:** Sandra Ripberger [mailto:[sandrari@yahoo.com](mailto:sandrari@yahoo.com)]  
**Sent:** Wednesday, February 01, 2017 8:48 AM  
**To:** Betsy Benac <[betsy.benac@mymanatee.org](mailto:betsy.benac@mymanatee.org)>  
**Subject:** just a note

Dear Betsy,  
You have my admiration for the professional and considerate way you chaired the Mosaic hearings. It is apparent that you have carefully studied the application and your questions were important ones. We appreciate that the Commission is aware that the community cares deeply about the natural environment with which we are blessed.  
Yours truly,  
Sandra Ripberger



## Bobbi Roy

---

**From:** Emmy Landrum  
**Sent:** Thursday, February 09, 2017 3:05 PM  
**To:** 9419146831@vzwpix.com  
**Cc:** Bobbi Roy; Debbie Bassett  
**Subject:** RE:

### Wingate East - Z-14-09 – Mosaic Fertilizer, LLC/Wingate East

Thank you for writing to the Board of County Commissioners to express your concerns regarding this project. Your comments will be shared with staff from Building and Development Services and the County Attorney's Office and provided to the Clerk for the official record when the hearing continues on Wednesday, February 15, 2017.

On behalf of Chairman Benac and the other Commissioners, thank you for your interest and participation.

*Emmy Landrum*  
*Executive Assistant*  
Board of County Commissioners  
Phone (941) 745-3709  
Fax (941) 745-3790  
**emmy.landrum@mymanatee.org**



-----Original Message-----

From: 9419146831@vzwpix.com [mailto:9419146831@vzwpix.com]  
Sent: Tuesday, January 31, 2017 9:49 PM  
To: Priscilla WhisenantTrace <priscilla.whisenanttrace@mymanatee.org>  
Subject:

I would just like to express to you my feelings about the Mosaic vote coming up. I feel strongly that this would be a very, very, very, bad thing to happen to Manatee County. I would like you to consider my opinion, and please vote no on allowing Mosaic to expand in eastern Manatee County. I would like this area to remain as pristine as possible for my grandchildren; sometime in the future. Thank you for your time and consideration.

Margaret Green  
Myakka City resident

## Bobbi Roy

---

**From:** Emmy Landrum  
**Sent:** Thursday, February 09, 2017 3:05 PM  
**To:** Jon Constanzer  
**Cc:** Bobbi Roy; Debbie Bassett  
**Subject:** RE: Mosaic

### Wingate East - Z-14-09 – Mosaic Fertilizer, LLC/Wingate East

Thank you for writing to the Board of County Commissioners to express your concerns regarding this project. Your comments will be shared with staff from Building and Development Services and the County Attorney's Office and provided to the Clerk for the official record when the hearing continues on Wednesday, February 15, 2017.

On behalf of Chairman Benac and the other Commissioners, thank you for your interest and participation.

*Emmy Landrum*  
*Executive Assistant*  
Board of County Commissioners  
Phone (941) 745-3709  
Fax (941) 745-3790  
**emmy.landrum@mymanatee.org**



-----Original Message-----

**From:** Jon Constanzer [mailto:7thgenerationhc@gmail.com]  
**Sent:** Tuesday, January 31, 2017 6:13 PM  
**To:** Priscilla WhisenantTrace <priscilla.whisenanttrace@mymanatee.org>; Charles Smith <Charles.Smith@mymanatee.org>; Stephen R Jonsson <steve.jonsson@mymanatee.org>; Robin DiSabatino <robin.disabatino@mymanatee.org>; Vanessa Baugh <vanessa.baugh@mymanatee.org>; Carol Whitmore <carol.whitmore@mymanatee.org>; Betsy Benac <betsy.benac@mymanatee.org>  
**Subject:** Mosaic

Sent from my iPhone please vote no as I am a Myakka city resident and 7th generation Florida native and very worried about are water quality for my family. Also worried about the effects of when they contaminate the rivers as we all ready are dealing with red tide in are bays due to there illegal dumping of contaminated water. Please vote no

## Bobbi Roy

---

**From:** Jacki Lopez <jlopez@biologicaldiversity.org>  
**Sent:** Friday, February 03, 2017 2:44 PM  
**To:** Bobbi Roy; Marianne Lopata  
**Cc:** Nicole Knapp  
**Subject:** RE: Public comments re Res. No. 17-017, Z-14-09, DTS20140547 - Mosaic Fertilizer, LLC

I'm writing to confirm that this communication is being forwarded to the Commissioners and will be part of the substantial and competent evidence it considers in the record.

Thank you  
Jacki

---

**From:** Jacki Lopez [mailto:jlopez@biologicaldiversity.org]  
**Sent:** Tuesday, January 31, 2017 2:10 PM  
**To:** 'Bobbi Roy'; 'Marianne Lopata'  
**Cc:** 'Nicole Knapp'  
**Subject:** Public comments re Res. No. 17-017, Z-14-09, DTS20140547 - Mosaic Fertilizer, LLC

Good afternoon,

It is my understanding that on Monday, Jan. 30, 2017, the board reversed course on allowing individuals authorized to speak on behalf of their organizations to speak for 20 minutes, or rather invented a new requirement that such a letter be signed by five members (rather than by the person authorized to designate a speaker). I'll be sending a letter about the arbitrary and capricious nature of that last minute requirement prior to the February 15 meeting. In the meantime, please see the attached comments I prepared for the 20 minute timeslot we were promised and signed up for on Jan. 26, 2017.

Please let me know if you have any questions.

Thank you  
Jacki

---

Jaclyn Lopez | Florida Director, Staff Attorney  
Center for Biological Diversity | [www.biologicaldiversity.org](http://www.biologicaldiversity.org)  
PO Box 2155 | St. Petersburg FL 33731

cell 727-490-9190 | [jlopez@biologicaldiversity.org](mailto:jlopez@biologicaldiversity.org)

# HIGH VALUE CROP POTENTIAL OF RECLAIMED PHOSPHATIC CLAY SOIL<sup>1</sup>

by

James A. Stricker<sup>2</sup>

Abstract. Phosphatic clay soil is a byproduct of phosphate mining. Approximately 120,000 acres of phosphatic clay have been created in Florida. Clay is washed from phosphate ore and pumped, at about 3-5% solids, to settling areas. During reclamation, a crust is formed on the soil surface while the sub-surface remains plastic. Experience demonstrated that reclaimed clays will support conventional agricultural equipment and operations. A ten year research program, funded largely by the Florida Institute of Phosphate Research, studied production of high value agricultural crops. Phosphatic clay has many desirable characteristics including high fertility and water holding capacity. Soil pH ranges from 7.0 to 8.3 with high levels of P, Ca, Mg, and K, plus adequate levels of minor elements. After reclamation, much of the soil surface is flat and poorly drained. Low water infiltration rates indicate a need for additional surface drainage for crop production. Radium (<sup>226</sup>Ra) averaged 574 Bq/kg in phosphatic clay soils vs. 30 Bq/kg on unmined sandy soil. Crops grown on phosphatic clay were generally higher in <sup>226</sup>Ra than crops grown on undisturbed mineral soils. Studies found that risk levels associated with radionuclides in foods to be insignificant. A water quality study found both sediment and total phosphorus to be of environmental concern in storm water runoff from cropped areas. Alum was found to be the most effective coagulant chemical. A wide variety of crops were successfully grown on phosphatic clay soil. Major impediments to growing high value crops was cost of building additional drainage, mitigating stormwater runoff water quality, inadequate land leases, and both a lack of markets and market capacity for agricultural products.

Additional Key Words: soil fertility, crop production, radionuclide, drainage, machine development, water quality.

## Introduction

Phosphatic clay is a by-product of phosphate mining operations. Phosphate occurs in a matrix of sand, clay and phosphate ore. Clay is washed from the matrix in the beneficiation process and pumped to large settling areas at 3 to 5% solids at a rate of 20,000 to 80,000 gpm. Individual settling areas vary in size from around 300 to 800 acres. The clay, often called slimes, is allowed to settle while the water is decanted and reused. The clays consolidate to 12 to 15% solids in 3 to 30 months (Zang & Albarelli, 1995). Depth of the clay can vary from a few feet to 60 ft or more. Phosphatic clay consists mostly of clay particles less than 2 microns in size with about half, by weight, less than 0.2 microns. Phosphate minerals, mainly apatite make up the medium size fractions while clay minerals, mainly montmorillonite, make up the finer fractions. Composition of phosphatic clay includes 50 - 60% clay, 30 - 40% quartz and 2 - 5% heavy minerals and miscellaneous (Hawkins, 1973)

Until the mid 1980's it was believed that clay settling areas, once filled, would become waste lands because of the difficulty of drying the clay. It was generally believed that a clay settling area would take 20 to 30 years or more to dry naturally to the point of supporting conventional farm equipment. In the early 1980's Agrico Chemical Co. (now IMC-Agrico Co.) introduced the use of high flotation tractors with rotary ditching plows to drain the clay surface and speed reclamation. A ditch was dug around the interior rim of a settling area dike. Tractors with ditching plows were used to create lateral ditches connecting to the rim ditch. This technique allowed water to drain and a crust to form on

---

<sup>1</sup> Paper presented at the 2000 Annual Meeting of the American Society for Surface Mining and Reclamation, Tampa, Florida, June 11-15.

<sup>2</sup> James A. Stricker is Extension Agent IV Economic Development, University of Florida/Polk County Cooperative Extension Service, Bartow, FL 33830

the soil surface. Observation has shown that, once the crust becomes 10 to 12 in. or more in thickness, the clay surface is able to support conventional farm equipment and operations. However, if the crust is penetrated or removed, the plastic subsurface is exposed and will no longer support equipment, until a new crust is formed. In addition, once a crust is formed the clay in the crust does not revert to a plastic state as a result of rain or irrigation. Agrico Chemical Co. also introduced the use of alfalfa, a deep rooted perennial legume, to further hasten the drying process. In this way, reclamation time has been reduced to as little as three to five years (Presnell, 1987). Recently, more specialized, light-weight equipment has been developed to reclaim clay settling areas but the basic technique of the rim ditch with lateral ditches has not changed.

Phosphate was first discovered in the Peace River, near Arcadia in 1881, and mining has continued since that time (Hood, 1984). Phosphate is also mined in the area of Hamilton County in north Florida. Phosphate is mined by an open pit method. Phosphate occurs as a matrix of sand, clay, and phosphate in about equal proportions. The phosphate matrix is covered with overburden, made up of sand and clay, ranging in thickness from 6 to 60 ft. Large draglines remove the overburden from the top of the phosphate matrix and deposit it in adjacent mined areas. The dragline then scoops up the matrix and deposits it in a pit, beside the mine cut, where water under high pressure is used to make a slurry of about 25 to 30% solids (Mislevy, et al., 2000). The slurry is pumped to a beneficiation plant where the clay is separated and pumped to settling areas, the sand is pumped to fill mine cuts, and the phosphate stockpiled in preparation for shipping. By the end of 1998 a total of 294,500 acres had been mined in Florida. Three land forms remain after mining: overburden, sand tailings, and clay settling areas (In addition, a relatively small area of sand/clay mix soil has been created). Clay settling areas cover about 40% of the mined area or about 120,000 acres (Roger Martin & Steve Partney, Fla. DEP, Bureau of Mine Reclamation, Tallahassee, FL, Jan 5, 2000, Personal communication).

#### Mined Lands Agricultural Research/Demonstration Project

The need for a research and education program dealing with the use of reclaimed phosphate land was identified in the early 1980's by Ernie Caldwell, a local County Commissioner. The Commissioner recognized that mining operations in Polk County would be winding down around the turn of the century as phosphate reserves were depleted. In the early 1980's phosphate reserve land was generating ad valorem tax revenue to the County of around \$60 per acre and about 12,000 people were employed both directly and indirectly by mining. After mining, the land generated only \$1 to \$2 per acre in ad valorem taxes and it was anticipated that depletion of phosphate reserves would result in loss of jobs as mining moves out of the County. By the end of 1998 employment had declined to 8,000 statewide (Florida Phosphate Council, Lakeland, FL, Jan 6, 2000, personal communication). Additional layoffs were announced by the industry in 1999. The vast majority of reclaimed land, especially clay settling areas, are in low intensity uses such as pasture, forestry, or wildlife. These uses generate few jobs and little economic activity to replace jobs and economic activity being lost as mining dwindles.

The Polk County/University of Florida Cooperative Extension Service and the University of Florida, Institute of Food and Agricultural Sciences (IFAS) became involved in the issue in 1983. Discussions were held with staff of the Florida Institute of Phosphate Research, a state granting agency funded through a severance tax on phosphate ore. It was determined that clay settling areas presented the greatest challenge. A research proposal and budget were developed and submitted to the institute. The initial concept included a one year startup and ten year research program. In October, 1985 the Institute approved funding for the first year of operation. In addition, the Polk County Board of County Commissioners (BoCC) funded an office, laboratory/shop building and leased two research sites. The program continued until August 1995.

The Mined Lands Project involved the BoCC, University of Florida IFAS, Florida Institute of Phosphate Research and the Phosphate Industry. The overall objectives of the project included:

- Identify crops and/or cropping systems that can be grown on phosphatic clay soils.
- Develop drainage strategies and systems to fit clay settling areas.
- Modify tillage and planting equipment to work with phosphatic clay soils.

- Solve production and harvesting problems associated with producing crops on phosphatic clay soils.
- Determine if crops produced on phosphatic clay soils are safe for inclusion in the human food chain.
- Determine market potential and production costs for selected crops and/or cropping systems and compare with costs for crops grown on native soils.
- Encourage private enterprise to apply the knowledge gained through research to commercial agricultural ventures on reclaimed phosphatic clay soils.

At the height of the project, a total of twenty University of Florida, IFAS research faculty from seven academic departments and two agricultural research centers were involved in the research effort. Highlights of the findings of the Mined Lands Project are described below.

### Soil Characteristics

Physical. Phosphatic clay as a soil is unique in Florida where natural soils are typically sandy or organic in nature. The clay has many desirable characteristics including high water holding capacity. It was determined that phosphatic clay has the capacity to supply approximately 4.7 inches of water to a growing crop compared with a Myakka fine sand, a native flatwoods type soil, which can only hold enough water to supply 1.9 inches, and Lakeland sand, 1.2 inches. Phosphatic clay's ability to hold water will greatly reduce the need for supplemental irrigation for growing crops. One of the most important characteristics, from a soil management perspective, is the shrinking/swelling nature of the clay. This results in large clods breaking into smaller pieces through the process of wetting and drying. Referred to locally as "mellowing", the clay swells when wet and shrinks as it dries creating fracture lines on the surface of clods, aiding seedbed preparation. A major disadvantage is that the clay cannot be worked when wet. The wet sticky nature of the clay can limit field access during wet periods and limit maintenance and harvest operations during critical periods for some crops (Jerez, et al.,1996; Shibles, et al.,1994; Stricker,1991).

Fertility. Phosphatic clay is naturally fertile (Table 1) with high levels of phosphorus, calcium, magnesium and potassium. Adequate amounts of the minor elements are also present. Soil pH varies from 7.0 to 8.3 which is slightly higher than optimum for most crops. Mild manganese deficiency symptoms were observed in some legume crops, however, with the exception of legume seed production, no yield response has been documented as a result of foliar applications of manganese (Jerez, et al., 1996; Stricker, 1991; Baltensperger, 1989). The only fertilizer required for non-legume crops was nitrogen, while legume crops did not require additional fertilizer to be productive on phosphatic clay soil. In addition, soil test procedures were developed to more accurately reflect the fertility status of phosphatic clay. A stronger acid extract was used to overcome the highly buffered alkaline nature of the soil. Soil test results were then correlated with yield response of crops (Schwandes et al., 1996)

Drainage. Clay settling areas are typically built on previously mined land. Little attention is given to the bottom contour of the settling area during construction. Holes from old mine cuts and spoil piles, not needed for dike construction, are left in place (Fig. 1). Once the settling area is filled with clay and reclaimed, the clay continues to consolidate and settle. The clay consolidates in proportion to its depth, so that deeper areas of clay sink lower than shallower areas. This results in a clay surface that begins to mirror the bottom contour of the settling area.

Production of high value agricultural crops, except rice, in Florida requires good soil drainage. Standing water, around the base of crop plants, should be removed within 24 hours (Stricker, 1993). In Florida's typically sandy soils, water can move rapidly through the soil profile. If a clay lens or hardpan is encountered water

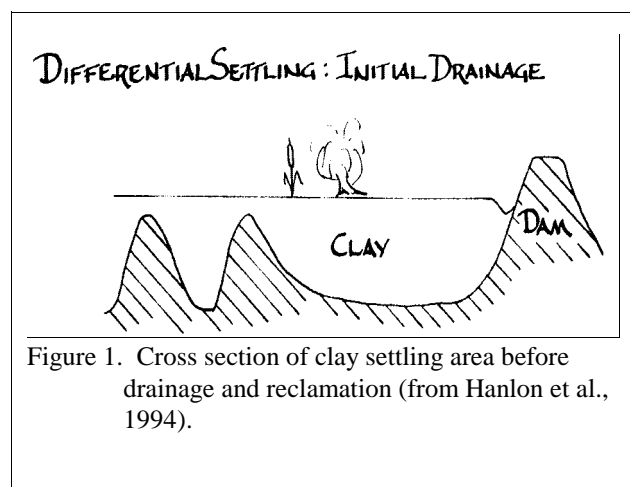


Figure 1. Cross section of clay settling area before drainage and reclamation (from Hanlon et al., 1994).

Table 1. Fertility comparison between a typical Florida sand soil and phosphatic clay.

Soil	pH	Ca	Mg	K	P	Zn	Mn
	ppm						
Sand <sup>1</sup>	4.8	63	10	67	166	1	0.3
Phosphatic Clay <sup>2</sup>	7.2	5923	2569	332	586	5.6	6.3
<sup>1</sup> Mehlich I extractant							
<sup>2</sup> Mehlich III extractant							

can move laterally to a ditch or natural drain. However, water doesn't penetrate phosphate clay soil readily (Hanlon & Ford, 1994). Laboratory tests have shown that the saturated conductivity of water through phosphatic clay is less than .06 in. per hr. By comparison, the saturated conductivity for a Myakka fine sand soil is more than 13 in. per hr. As a result, surface drainage is required if phosphatic clay is to be used for high value agricultural crops. A surface relief of 1 ft. to 2 ft. of fall per 100 ft. (1%-2% slope) is needed for good drainage (Hanlon, et al., 1994(a)). On the other hand, slopes of greater than 2% may permit erosion of bare soil. Where the slope is less than 1% a system of lateral drainage ditches will be needed. These ditches (or low flat grassed swales) should connect directly with the rim ditch built during the initial reclamation process. These lateral ditches should be part of a land forming process, which is made up of a series of large beds (macrobeds) approximately 200 ft. wide and 1 ½ to 2 ft. high in the center (Fig. 2). In areas where old spoil piles are left beneath the surface the differential settling can create natural drainage.

Several methods of macrobed construction were evaluated including use of a small (Cat D3) bulldozer, repeated plowing with a moldboard plow, in one direction, a whirlwind terracer, and a motor grader (Hanlon et al., 1996; Hanlon et al., 1994(b)). Construction with the bulldozer was time consuming and required a drying period between passes. The terracer was not an effective soil mover so its use was discontinued. Repeated use of the moldboard plow was satisfactory but construction wasn't as fast as with the motor grader under dry soil conditions. The combination of the plow and motor grader proved to be effective under dry soil conditions. Estimated cost for building a macrobed 200 ft. wide and 2 ft. high in the center, from a flat surface, moving soil with the combination of motor grader and plow was about \$440.00 per acre.

### Crop Production

Vegetable Crops. A large number of vegetable crops were studied on phosphatic clay soil. Cultural practices and fertility needs for optimum production were identified. Some of the most promising vegetable crops, from a production standpoint, were cole crops such as broccoli, cabbage, and cauliflower which can be grown in the winter. Cucumbers and yellow squash were also productive and lend themselves to multiple cropping with

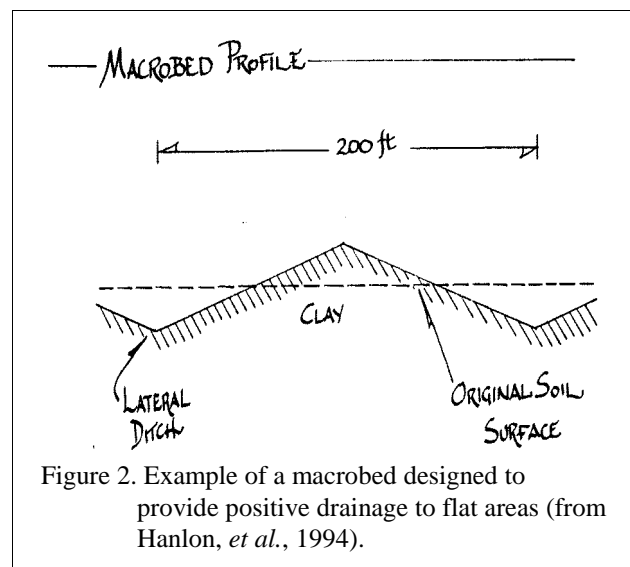


Figure 2. Example of a macrobed designed to provide positive drainage to flat areas (from Hanlon, et al., 1994).

cole crops. Sweet corn produced marketable yields in excess of state averages but problems with stand establishment and plant vigor were observed especially in the early spring. Okra was unusually productive on phosphatic clay soil as was zucchini squash and southern peas. One notable failure was sweet peppers. Numerous trials with sweet peppers resulted in low yields and poor quality of both plants and fruit. No cause or explanation has been found.

Turf and Ornamental Crops. Both ornamental trees and St. Augustinegrass sod were grown successfully on phosphatic clay soil. Once established, trees didn't require supplemental irrigation. It was determined that both irrigation and fertility needs of St. Augustinegrass grown for sod would be substantially less than growing this crop on sandy soils. Both trees and sod were successfully transplanted to typical sandy soils. No difference was observed in the rooting strength of clay-grown St. Augustinegrass vs. sand-grown. Trees grown on clay rooted as well as sand-grown trees when transplanted to a sandy soil (Gilman, 1994; Dudeck, 1990). An ornamental type of perennial peanut was also grown for sod on phosphatic clay. When dug for sod, the clay helped maintain the integrity of the sod piece making transplanting easier. When perennial peanut is grown on sand and harvested for sod, the sand falls out of the sod piece requiring additional labor to cover the sod with soil when transplanting.

Grain Crops. Rice and soybeans performed well on phosphatic clay. Experimental rice yields were equivalent to yields expected in rice growing regions of Louisiana and Arkansas. Soybean yields were as high as 30 to 40 bushels per acre but were inconsistent. Yields of field corn, grain sorghum, wheat, and triticale were marginal. Best corn yields were observed when planted in early spring. Unfortunately, early spring planting requires the grain be harvested in June or July when normally frequent rains limit field access and increase the risk of total crop loss. The same is true of soybeans and grain sorghum.

Energy and Industrial Crops. Kenaf is a tropical plant, grown for its fiber. It is well-adapted to the hot humid conditions found in central Florida. Kenaf production would fit well with central Florida's weather patterns. Planting and harvest activities take place in the normally dry winter season while few if any field activities would be needed during the wet summer months. Kenaf studies with a number of varieties, on phosphatic clay, resulted in yields averaging around 12 tons of dry matter per acre (Stricker et al., 1998). Although interest in natural fibers is increasing nationally, no market presently exists for kenaf in central Florida.

Sugarcane, energycane, and elephantgrass were planted as potential energy crops on phosphatic clay. These crops were harvested annually for four years, without replanting. Average yields were in the range of 20 to 25 tons of dry matter per acre (approximately 80 to 100 wet-tons per acre). These results indicate that production of these crops could be a major source of renewable energy (Stricker et al., 1993). A processing facility would be needed to convert these crops to energy in the form of methane, ethanol, or electricity through direct combustion. Without an appropriate facility there is no market for the crop. Tree crops including leucaena and *Eucalyptus* were also evaluated on phosphatic clay. Tree crops could be harvested and co-fired with coal in local generating plants, with minor plant modifications. Government subsidies for "closed loop" biomass could make this option economically feasible (Segrest et al., 1998).

Citrus on Phosphatic Clay. A demonstration block of citrus was planted on phosphatic clay in the spring of 1989. Navel oranges on both carrizo citrange and swingle citrumello rootstocks were planted on a two row bed. Trees were not irrigated once they were established. Tree foliage has maintained a dark green color with no visible deficiency symptoms. However, leaf tissue analysis indicated a deficiency of zinc and copper. Internal fruit quality was normal.

Legume Seed Production. Growing seed for both warm-season and cool-season legumes appears to be possible on phosphatic clay soils. Seed yield of cool-season legumes (berseem clover, crimson clover, and red clover) were increased by staging the growth of the plants and by foliar applications of manganese. Manganese levels in plants remained near critical levels for clover, even in treated plots. Seed weight was low and additional work is needed to evaluate the potential for improvement. Greater seed weight is essential because there is a direct correlation between seed weight and seedling vigor. Seed production for tropical legumes (hairy indigo, alyceclover, and desmodium) appeared to be exceptional (Baltensperber et al., 1989).



Marketing and Cost of Production. Being able to successfully grow a crop is only part of the picture. For a crop to be a commercial success, a market must exist or be developed. In addition, there must be a reasonable expectation of profit from growing and selling the crop.

Budgets of estimated production cost for squash, cabbage, and cucumbers on phosphatic clay were compared with reported production costs for squash in Dade Co., cucumbers in southwest Florida, and cabbage in the Hastings area. Conclusions were that total acreage for each crop in Florida is declining while yield per acre of all three crops is increasing, resulting in an increase in total production. This means that in order to increase production on phosphatic clay, acreage in other production areas will have to be reduced or there will be a decline in the price growers receive for the crop.

A study of the market potential for feed grains and alfalfa hay in central Florida was completed (Rahmani and Degner, 1990). The study identified an existing market for 478,000 tons of alfalfa hay within a 100 mile radius of Polk County. Virtually all of the hay was being shipped from other states. In addition, alfalfa was bringing premium prices in Florida. Unfortunately, it has been determined that growing alfalfa on phosphatic clay is not feasible because of stand loss and difficulties of harvesting alfalfa in a timely manner during the summer months. However, the market could be supplied to some extent by perennial peanut, a tropical forage crop with characteristics similar to alfalfa. Perennial peanut may be better adapted to sandy soils than phosphatic clay. Artificially drying perennial peanut for high quality hay during summer months will enhance its quality and competitiveness with imported alfalfa (Talbot et al., 1994). Feed grain prices were marginal and, with low yields in central Florida, could not compete with traditional grain growing regions. Rice was not included in the study.

#### Radionuclide Issue

Plants & Soil. Phosphatic clay was found to contain elevated levels of radionuclides, when compared with native unmined soils. The elements of concern, from the uranium decay series, include  $^{226}\text{Ra}$ ,  $^{210}\text{Po}$ , and  $^{210}\text{Pb}$ . The element of greatest concern was  $^{226}\text{Ra}$ . Levels in phosphatic clay averaged  $574 \text{ Bq kg}^{-1}$  (dry weight basis) compared with unmined land of  $30 \text{ Bq kg}^{-1}$  (Stricker, et al., 1994). Radionuclide content of soil is important because plants are a link in the food chain. Plants can take up radionuclides through the roots or absorb deposited materials through above ground parts. Radionuclide uptake by plants is influenced by several factors including plant species; soil radionuclide content; and soil characteristics such as texture, pH, and the concentration of other stable elements. For example, legume plants that have a relationship with N-fixing bacteria appear to take up more radionuclides from the soil than other plants. Legumes in general are an order of magnitude higher in absorbing radionuclides than other species such as grasses. Higher soil radionuclide content means more radionuclides are available for plant uptake, other things being equal. Character of the soil such as soil texture influences radionuclide content as well as plant availability. Sandy soils have lower retentive capacity than clay, resulting in lower levels of radionuclides than clay, because of leaching. On the other hand, the low retentive capacity of sandy soils makes radionuclides more available to the plant. Radionuclides are also more available from acidic than alkaline soils. Chemically similar stable elements in soil compete for the same binding sites on plant roots. For example, high Ca and Mg concentrations in soils may reduce  $^{226}\text{Ra}$  uptake.

In a study of foods (mainly fruits and vegetables) grown on reclaimed phosphate mined land Guidry et al. (1991) found that foods grown on mined land exhibited higher radionuclide concentrations than foods grown on unmined lands. The higher concentrations would result in higher radiation doses to consumers of these foods. However, the radiation doses would be very low. In general, green leafy vegetables, legumes and root crops were found to have higher concentrations of radionuclides than other crops. The study concluded that restrictions on food production on reclaimed phosphate lands don't appear warranted. There are no standards for radionuclides in foods, however, a normal dietary intake results in a radiation dose of about 16 mrem per year in committed effective dose equivalent. The same diet, containing 10% of foods from reclaimed phosphate land, would add only 0.3 mrem more than the individual would receive if food came from sources other than reclaimed phosphate land. Walsh (1991) reported that cancer risks due to radionuclides in food are small and may be considered to be insignificant. The radiation dose from foods is well within normal variation due to background radiation.

Table 2. Radium<sup>226</sup> in tissues from beef animals grown on forages from reclaimed land, and from unmined land

Treatment	Muscle		Kidney		Bone	
	Mean <sup>1</sup>	SD	Mean	SD	Mean	SD
	-----Bq kg <sup>-1</sup> DM-----					
Alfalfa hay	0.044 <sup>a</sup>	0.033	0.43 <sup>a</sup>	0.22	26.22 <sup>a</sup>	25.63
Corn silage	0.037 <sup>a</sup>	0.041	0.41 <sup>a</sup>	0.22	22.53 <sup>a</sup>	21.54
Reclaimed pasture	0.081 <sup>b</sup>	0.048	0.62 <sup>b</sup>	0.18	44.95 <sup>a</sup>	32.45
Unmined pasture	0.033 <sup>a</sup>	0.030	0.70 <sup>b</sup>	0.11	23.41 <sup>a</sup>	31.99 <sup>a</sup>
Overall mean	0.049 <sup>c</sup>		0.54 <sup>c</sup>		29.43 <sup>d</sup>	
<sup>1</sup> Means with the same letter are not different (P<0.05). <sup>2</sup> Means within bottom row with the same letter are not different (P<0.05) (Duncan's multiple range test). (from Stricker et al., 1994)						

**Beef & Milk.** Presently one of the most common uses for reclaimed phosphatic clay is for grazing beef animals. In addition, it could be feasible to grow forage crops and feed them to dairy animals in the future. To determine if the radionuclides in pasture and forage crops could accumulate in meat or milk, two studies, one with young beef steers, and the second with young dairy heifers were conducted. In the beef study, a group of 60 young beef steers (avg wt. 429 lbs.) were divided into four groups and fed corn silage or alfalfa hay grown on phosphatic clay, grazed on reclaimed pasture and the fourth group, (control) or on unmined pasture (Stricker et al., 1994). After approximately 14 months (avg. wt. 820 lbs.) the animals were slaughtered and samples of muscle, kidney and bone analyzed for <sup>226</sup>Ra. Radium <sup>226</sup> levels in muscle tissues from the reclaimed pasture were significantly higher (P<0.05) than muscle tissue from the other three treatments (Table 2). Radium <sup>226</sup> levels in kidney tissue from both unmined and reclaimed pasture were higher (P<0.05) than from the alfalfa and corn silage treatments. Bone <sup>226</sup>Ra levels were higher (P<0.05) than both muscle and kidney tissue. Although statistical differences were found among treatments, radionuclide levels were very low and no food safety problems were indicated

In the dairy study, 45 Holstein dairy replacement heifers were divided into three groups. Each group was fed either corn silage grown on phosphatic clay, alfalfa silage grown on phosphatic clay, or corn silage grown on native unmined soil (control) into their first lactation. All three elements, <sup>226</sup>Ra, <sup>210</sup>Po, and <sup>210</sup>Pb were examined in this study (Staples et al., 1994). Milk samples were taken on the day of calving, then 15 and 30 days later. The only significant (P<0.05) difference among treatments was with <sup>226</sup>Ra. Cows fed both corn silage and alfalfa grown on phosphatic clay produced milk with more <sup>226</sup>Ra than milk from cows fed corn silage grown on unmined land (Table 3). No differences were observed with either <sup>210</sup>Po, or <sup>210</sup>Pb among treatments.

The heifers in this study grew at an acceptable rate, conceived normally, had normal gestation periods, gave high quality colostrum at calving, and produced similar amounts of milk as control heifers. Although milk from heifers fed alfalfa and corn silage from phosphatic clay contained greater concentrations of <sup>226</sup>Ra than controls, the values were only slightly above the range reported for milk in the U.S

Table 3. Radium<sup>226</sup>, <sup>210</sup>Pb, and <sup>210</sup>Po levels in milk from cows fed corn silage and alfalfa grown on phosphatic clay and corn silage grown on unmined land.

	<sup>226</sup> Ra <sup>1</sup>	<sup>210</sup> Pb	<sup>210</sup> Po
	-----Bq kg <sup>-1</sup> DM-----		
Corn Silage - Phos. Clay	0.22 <sup>a</sup>	0.30 <sup>a</sup>	1.38 <sup>a</sup>
Alfalfa - Phos. Clay	0.27 <sup>a</sup>	0.58 <sup>a</sup>	0.94 <sup>a</sup>
Corn Silage - Unmined	0.13 <sup>b</sup>	0.45 <sup>a</sup>	0.92 <sup>a</sup>
<sup>1</sup> Means in a column with the same letter are not different (P<0.05). (from Staples et al., 1994)			

Another important finding from the dairy study was that forages grown on phosphatic clay appeared to have greater concentrations of molybdenum (Mo) than forages grown on unmined land. Diet concentrations of less than 6 mg kg<sup>-1</sup> are recommended for cows to prevent molybdenosis. Mo concentrations averaged 6.1 mg kg<sup>-1</sup> over the entire 14 month period of the study. The ratio of Mo to Copper (Cu) is also an important guideline in predicting molybdenosis or hypocuprosis. A dietary ratio of 1:2 to 1:4 has been suggested as necessary to prevent these disorders. The ratios for alfalfa grown on phosphatic clay averaged 1:1.7 (Staples et al., 1994).

#### Machine Development and Modification

Rotary Bedder. Building vegetable beds on phosphatic clay presented problems. A number of methods were tried including equipment designed for sand land and a disk hiller in combination with a horizontal shaft rotary tiller. Beds could be built with the various machines but only inefficiently, with numerous passes over the field. To solve this problem a prototype machine, based on machines used on heavy clay soils in Europe, was designed and built (Shaw, 1994 (a)). The machine used a rotor of stepped helicoids preceded by a rotary tiller on each side. After a number of refinements and modifications, the machine could build a well shaped, fine textured bed in one pass.

Punch Planter. Conventional vegetable planters typically employ a runner or a double disk opener to form furrows in the soil to receive seeds. These types of openers tend to smear the soil and to clog up when used on soils with high clay content, especially when the soil is moist. To solve this problem, a revolving spade planter was designed and fabricated utilizing a vacuum seed meter (Shaw, 1994 (b)). The planter was designed with fifteen spades to space seeds 10 in. apart in the row. The seed

meter was designed for large seeds, which it planted accurately. Small seeds would have to be pelleted to work with the seed meter. The spade wheel performed well in sticky soil and a scraper effectively removed any soil sticking to the spades. No major problems were encountered with sticky soil preventing seeds from dropping.

Cable Powered Drain Plow. To speed up the consolidation and drying of phosphatic clay in the early stages of reclamation, surface drains are needed to remove water from low spots. High flotation tractors have difficulty working on soft clays in the early stages of reclamation. In order to expedite the reclamation process, a non-tractive method of pulling a ditching plow was designed and tested (Shaw, 1995). The drainage equipment consisted of two winch units and a drainage plow attached to the middle of a cable. The system was designed for one winch unit to be located on each side of a clay settling area with a cable stretched between the units. The winch units would pull the drainage plow back and forth across the settling area forming drainage channels. This system could function at any stage of reclamation and could also be used to start shaping the land for macrobeds, while the soil was still fluid. Small scale equipment used to demonstrate this concept was capable of excavating 35 ft<sup>3</sup> per minute over spans of 2000 ft. As a result, it was concluded that a larger system would be very effective for ditching and land forming.

### Water Quality

Early in the Mined Lands Agricultural Research/Demonstration Project it was recognized that water quality and nutrient loss due to erosion were concerns as phosphatic clay soils are developed for intensive agriculture. In 1995 the Florida Institute of Phosphate Research approved a two year contract to study water quality from agricultural activities on phosphatic clay soil. Preliminary work included small plot work to calibrate the GLEAMS (Groundwater Loading Effects of Agricultural Management Systems) model with respect to sediment and runoff predictions. The calibrated model was used to predict runoff and sediment from a second small plot experiment. Water quality measurements including: runoff and sediment amounts, Nitrate-N, ammonium-N, total Kjeldahl N, total P and Soluble reactive P were measured and modeled (Haman et al., 1998). The calibrated GLEAMS model successfully predicted runoff and sediment loading observed in the second small plot experiment. The model also predicted N loading in runoff and sediment, but over-predicted P. Sensitivity analysis showed that the present GLEAMS model does not have appropriate mechanisms for addressing the high mineral P concentrations of phosphatic clay soils. P was strongly correlated with sediment.

A field scale study included two three acre fields. Both fields were on macrobeds with 2% slopes. Flumes and automated water sampling equipment, supplied by IMC-Agrico Co., were installed at the discharge end of each macrobed. A weather station was used to collect rainfall amount, temperature, and wind data related to the fields. One field was planted in bermudagrass and maintained in sod. The second field was clean tilled and kept in a corn-wheat rotation. While numerous precipitation events occurred in both years of the study, most water was retained on site (no runoff). As expected, there were more runoff events from the cornfield. When a runoff event occurred, N forms were below regulatory concern. Both sediment and P from the cornfield were 2 or more than 6 times the concentration found in runoff from the bermudagrass field. When a runoff event occurred, both sediment and total phosphorus (TP) were of environmental concern. Findings related to water quality in the field trial were consistent with the findings of small plot research conducted earlier.

A stilling pond was installed downstream from the two fields. As operated in this study, the stilling pond provided little retention and did nothing for water quality. Retention time was too short to permit natural settling. The suspended clay solids in runoff waters, should they be released, would be of environmental concern. Chemical treatment would likely improve water quality for subsequent discharge. Three compounds were studied: ferric chloride, ferric sulfate, and alum. All compounds were effective in TP removal below 1 ppm using basic chemical techniques. Alum was the most effective coagulant chemical.

### Conclusions

Research results show that phosphatic clay soil has potential for intensive agricultural production. However, at this time, no significant commercial agricultural production, other than cattle grazing, is happening on phosphatic clay soil. There are a number of reasons why this situation exists. Once a clay settling area is reclaimed according to the Florida DEP, Bureau of Mine Reclamation standards, it is not suitable for intensive agricultural production. Much of the land is left in a flat-poorly drained condition requiring additional investment in a drainage system. If storm water is to be released into public waters, the turbid-high phosphorus runoff must also be mitigated. Until the past two years, virtually all of the reclaimed land with agricultural potential was owned by phosphate companies. Company policy has been to maintain ownership of all land in a mine until mining is completed. Land is rented on a year to year basis, for cattle grazing, with a provision that the lease may be terminated with thirty days notice. This type of lease is not suitable

for someone attempting to grow high value crops. One exception to the one year lease was a ten year closed-end lease granted to a company planning to grow grain sorghum. Unfortunately, the company could not afford to improve drainage or make other land improvements due to the closed end lease. Ten years was not enough time to recover their investment and since the land would be more valuable, they would likely have to pay more to get a new lease on the land. The company didn't make improvements and because of this and other reasons the effort failed.

Research indicated that slightly elevated levels of radionuclides in foods grown on phosphatic clay do not pose a significant health risk to people consuming these foods. However, the risk of adverse public relations for people attempting to grow food crops on this land is likely an impediment to growing food crops. This is one reason why growing biomass and industrial crops has appeal.

Although many crops grow well on phosphatic clay, markets for these crops are already saturated or don't exist at all. Competition from Mexico, because of NAFTA, has reduced the market for Florida vegetables and a number of growers have gone out of business. Markets for landscape trees and sod are also saturated resulting in low returns to those already growing these crops. If a market can be created, biomass and industrial crops could utilize a large acreage of reclaimed land. Efforts are underway with major utility companies to establish a system to co-fire woody biomass with coal and to develop a processing and manufacturing facility for kenaf. In the past two years more than 30,000 acres of mined land containing around 12,000 acres of clay settling area has been sold to private land owners. More land is expected to move to private ownership as more mines are mined out and closed.

#### Literature Cited

- Baltensperger, D.D., G.M. Prine, and D.S. Wofford. 1989. Phosphatic Settling Pond Clays as Potential Forage Legume Seed Production Site. XVI International Grasslands Congress, Nice, France. Proceedings. pp 1627-1628.
- Dudeck, A.E. 1990. Influence of Planting Method, Fertility Program, Cultivar, and Soil Type on St. Augustinegrass. Proc. Fla. State Hort. Soc. 103:355-360.
- Gilman, E.F. 1994. Growing Shade Trees on Reclaimed Phosphatic Clay Settling Ponds. Univ. of Fla. Coop. Ext. Serv. Gainesville, FL 32611. SS-MLR-3. 3 pgs.
- Guidry, J.J., C.E. Roessler, W.E. Bolch, J.T. McClave, C.C. Hewitt, and T.E. Abel. 1991. Radioactivity in Foods Grown on Mined Phosphate Lands. *in* E.A. Hanlon, *ed.* Proceeding of Naturally Occurring Radionuclides in Agricultural Products-Symposium. January 24-25, 1991. Univ. of Fla. Coop. Ext. Serv. Gainesville, FL 32611. pp. 164-171.
- Haman, D.Z., E.A. Hanlon, J.A. Stricker, D.L. Anderson, D. Gao, and W.R. Reck. 1998. Managing Runoff Water Quality from Clay Settling Areas Used for Intensive Agricultural Production. Final Report to Florida Institute of Phosphate Research, Bartow, FL 33830. Work performed by: University of Florida, IFAS, Gainesville, FL 32611. 89 pgs.
- Hanlon, E.A., R.A. Jerez, D.B. Shibles, and T.C. Riddle. 1996. Drainage Control. *in* E.A. Hanlon, R.A. Jerez, and J.A. Stricker *eds.* The Mined Lands Agricultural Research and Demonstration Project: Summary of Experiments and Extension Recommendations. Florida Institute of Phosphate Research. Bartow, FL 33830. Pub. No. 03-093-128. pp. 33-35
- Hanlon, E.A., H.W. Kananen, and E.C. French. 1994a. Guidelines for Reclaiming Clay Settling Areas for Intensive Agricultural Uses. Univ. of Fla. Coop. Ext. Serv., Gainesville, FL 32611. SS-MLR-1. 7 pgs.

- Hanlon, E.A., D.B. Shibles, and F. Mallory. 1994b. Macrobed Construction. *in* D.B. Shibles *ed.* Polk County Mined Lands Agricultural Research and Demonstration Project, Three Year Summary. Pub. No. 03-088-107. Florida Institute of Phosphate Research, Bartow, FL 33830. pp 83-84.
- Hanlon, E.A., and R.D. Ford. 1994. Reclaimed Phosphatic Clays: Surface Drainage and Water Table Measurements. Univ. of Fla. Coop. Ext. Serv., Gainesville, FL 32611. SS-MLR-6. 4 pgs.
- Hawkins, W. H. 1973. Physical, Chemical and Mineralogical Properties of Phosphatic Clay Slimes from the Bone Valley Formation. MS Thesis, University of Florida, Gainesville, FL 32611.
- Hood, H. 1984. Phosphate Mining in Florida, A Source Book. Florida Defenders of the Environ. Environ. Serv. Ctr. Florida Defenders of Environ., Gainesville, FL.
- Jerez, R.A., E.A. Hanlon, and G.J. Hochmuth. 1996. Seedbed Preparation. *in* E.A. Hanlon, R.A. Jerez, and J.A. Stricker *eds.* The Mined Lands Agricultural Research and Demonstration Project: Summary of Experiments and Extension Recommendations. Florida Institute of Phosphate Research. Bartow, FL 33830. Pub. No. 03-093-128. pp 31-32.
- Mislevy, P., W.G. Blue, J.A. Stricker, B.C. Cook, and M.J. Vice. 2000. Phosphate Mining and Reclamation. *In* R.I. Barnhisel, W.L. Daniels, and R.G. Darmody *eds.* Reclamation of Drastically Disturbed Lands. Am. Soc. of Agron., Crop Sci. Soc. of Am. and Soil Sci. Soc. of Am., Madison, WI. (In Press).
- Presnell, S.L. 1987. An Experimental Method for Reclaiming and Growing Crops on a Waste Clay Settling Pond Utilizing an All Terrain Flotation Vehicle. Abstract. AIME Regional Meeting. Lakeland, FL. March 27th and 28th, 1987.
- Rahmani, R., and R.L. Degner. 1990. Market Opportunities for Feed Grains and Alfalfa Hay Produced on Reclaimed Phosphatic Clay in Florida. Fla. Agric. Market Res. Ctr., Food and Resource Economics Dept., IFAS, Univ. of Fla., Gainesville, FL 32611. Ind. Rept.90-2. 56 pgs.
- Schwandes, L., R.A. Jerez, E.A. Hanlon, and G.J. Hochmuth. 1996. Comparison of Soil Extracts. *in* E.A. Hanlon, R.A. Jerez, and J.A. Stricker *eds.* The Mined Lands Agricultural Research and Demonstration Project: Summary of Experiments and Extension Recommendations. Florida Institute of Phosphate Research. Bartow, FL 33830. Pub. No. 03-093-128. pp 27-30.
- Segrest, S.A., D.L. Rockwood, J.A. Stricker, A.E.S. Green, W.H. Smith, and D.R. Carter. 1998. Biomass Co-Firing with Coal at Lakeland, Florida, Utilities. Proc. BioEnergy'98: Expanding BioEnergy Partnerships. Madison, WI. October 4-8, 1998. pgs. 315-325
- Shaw, L.N., 1994a. Powered Bedder (1990-91) - First Prototype. *in* D.B. Shibles *ed.* Polk County Mined Lands Agricultural Research and Demonstration Project. Florida Institute of Phosphate Research, Bartow, FL 33830. Pub. No. 03-088-107. pp 117-122.
- Shaw, L.N., 1994b. Punch Planter for Vegetable Crops. *in* D.B. Shibles *ed.* Polk County Mined Lands Agricultural Research and Demonstration Project. Florida Institute of Phosphate Research, Bartow, FL 33830. Pub. No. 03-088-107. pp 133-136.
- Shaw, L.N., 1995. Cable Drawn Drainage Plough for Land Reclamation in Unconsolidated Phosphatic Clay Sediments. J. Agric. Engng. Res. 62, 215-219.
- Shibles, D. B., J.A. Stricker, G.M. Prine, E.A. Hanlon, C.R. Staples, E.C. French, and T.C. Riddle. 1994. Production and Management of Alfalfa on Phosphatic Clay in Florida. Univ. of Fla. Coop. Ext. Serv., Gainesville, FL 32611. SS-MLR-2. 10 pgs.

- Staples, C.R., R. Umana, J.A. Stricker, D.B. Shibles, M.J. Hayden, C.D. Hissem, D.S. Lough, and D.D. Demorest. 1994. Radionuclides in Milk of Dairy Heifers Raised on Forages Harvested from Phosphatic Clay Soils on Reclaimed Mined Land. *J Environ. Qual.* 23:663-667.
- Stricker, J.A., G.M. Prine, and T.C. Riddle. 1998. Kenaf-A Possible New Crop for Central Florida. Univ. of Fla. Coop. Ext. Serv., Gainesville, FL 32611. SS-AGR-68. 11 pgs.
- Stricker, J.A., E.A. Hanlon, R.L. West, D.B. Shibles, S.L. Sumner, and R. Umana. 1994. Naturally Occurring Radionuclides in Tissues from Beef Fed Phosphatic Clay-Grown Forages. *J. Environ. Qual.* 23:667-670.
- Stricker, J.A., G.M. Prine, D.L. Anderson, D.B. Shibles, and T.C. Riddle. 1993. Production and Management of Biomass/Energy Crops on Phosphatic Clay in Central Florida. Univ. of Fla. Coop. Ext. Serv., Gainesville, FL 32611. Cir. 1084. 8 pgs.
- Stricker, J.A., 1993. A Brief Overview of the Findings of the Polk County Mined Lands Agricultural Research/Demonstration Project, October 1985 to February 1993. University of Florida/Polk County Cooperative Extension Service. Bartow, FL 33830. Xerox, 6 pgs.
- Stricker, J.A. 1991. Agricultural Use of Reclaimed Phosphate Waste Clays, *in* Proc. 41st annual meeting of the fertilizer industry round table, Tampa, FL Oct. 21-23. The Fertilizer Industry Round Table, Washington, DC. pp. 98-104.
- Talbot, M.T., S.A. Smith, R.L. Clouser, and T.G. Taylor. 1994. Economics of Artificially Drying Alfalfa or Perennial Peanut for Hay in Central Florida. Univ. of Fla. Coop. Ext. Serv., Gainesville, FL 32611. SS-MLR-9. 14 pgs.
- Welsh, P.J., 1991. Radionuclides in Foods: Putting the Risk in Perspective. *in* E.A. Hanlon, *ed.* Proceeding of Naturally Occurring Radionuclides in Agricultural Products-Symposium. January 24-25, 1991. Univ. of Fla. Coop. Ext. Serv. Gainesville, FL 32611. pp. 174-193.
- Zang, P. and G.R. Albarelli. 1995. Phosphatic Clay Bibliography. Florida Institute of Phosphate Research, Bartow, FL 33830. Publication No. 02-097-114. 322 pgs.

## Bobbi Roy

---

**From:** Emmy Landrum  
**Sent:** Thursday, February 09, 2017 3:05 PM  
**To:** Mary Beth Berry  
**Cc:** Bobbi Roy; Debbie Bassett  
**Subject:** RE: Mosaic

### Wingate East - Z-14-09 – Mosaic Fertilizer, LLC/Wingate East

Thank you for writing to the Board of County Commissioners to express your concerns regarding this project. Your comments will be shared with staff from Building and Development Services and the County Attorney's Office and provided to the Clerk for the official record when the hearing continues on Wednesday, February 15, 2017.

On behalf of Chairman Benac and the other Commissioners, thank you for your interest and participation.

*Emmy Landrum*  
*Executive Assistant*  
Board of County Commissioners  
Phone (941) 745-3709  
Fax (941) 745-3790  
**emmy.landrum@mymanatee.org**



-----Original Message-----

From: Mary Beth Berry [mailto:mbb1276@yahoo.com]  
Sent: Tuesday, January 31, 2017 1:16 PM  
To: Priscilla WhisenantTrace <priscilla.whisenanttrace@mymanatee.org>; Charles Smith <Charles.Smith@mymanatee.org>; Stephen R Jonsson <steve.jonsson@mymanatee.org>; Robin DiSabatino <robin.disabatino@mymanatee.org>; Vanessa Baugh <vanessa.baugh@mymanatee.org>; Carol Whitmore <carol.whitmore@mymanatee.org>; Betsy Benac <betsy.benac@mymanatee.org>  
Subject: Mosaic

Commissioners:

Please vote no to expanding the mosaic mine. As a long time manatee county resident, I am concerned that our wetlands, land will be destroyed. I know that they say that they will restore, but restoration is not the same as the original land. The destruction of our current ecosystem and the fact that it will encroach on the peace river are a concern to me and should be to you as well.

Thank you

Mary Beth Berry

Sent from my iPhone



## Bobbi Roy

---

**From:** Emmy Landrum  
**Sent:** Thursday, February 09, 2017 3:04 PM  
**To:** Samantha Young  
**Cc:** Bobbi Roy; Debbie Bassett  
**Subject:** RE: Please Vote NO on Mosaic's new permitting by the Myakka and Peace River Area

### Wingate East - Z-14-09 – Mosaic Fertilizer, LLC/Wingate East

Thank you for writing to the Board of County Commissioners to express your concerns regarding this project. Your comments will be shared with staff from Building and Development Services and the County Attorney's Office and provided to the Clerk for the official record when the hearing continues on Wednesday, February 15, 2017.

On behalf of Chairman Benac and the other Commissioners, thank you for your interest and participation.

*Emmy Landrum*  
*Executive Assistant*  
Board of County Commissioners  
Phone (941) 745-3709  
Fax (941) 745-3790  
[emmy.landrum@mymanatee.org](mailto:emmy.landrum@mymanatee.org)



---

**From:** Samantha Young [mailto:sw8141@hotmail.com]  
**Sent:** Tuesday, January 31, 2017 1:10 PM  
**To:** Priscilla WhisenantTrace <priscilla.whisenanttrace@mymanatee.org>; Charles Smith <Charles.Smith@mymanatee.org>; Stephen R Jonsson <steve.jonsson@mymanatee.org>; Robin DiSabatino <robin.disabatino@mymanatee.org>; Vanessa Baugh <vanessa.baugh@mymanatee.org>; Carol Whitmore <carol.whitmore@mymanatee.org>; Betsy Benac <betsy.benac@mymanatee.org>  
**Subject:** Please Vote NO on Mosaic's new permitting by the Myakka and Peace River Area

Commissioners, I plead with you to say NO to Mosaic's new mining permits. I live right on the Myakka Head waters in Manatee County. Mosaic is ripping up the surrounding land and possibly bleeding our water aquifer dry and contaminating the air, land and water supply. Water tables have dropped the closer they have moved their dredging to our area, wells have dried up, and sink holes have opened up at their mining sites just miles from here. The proposed permits will allow them to mine for phosphate as close as .25 miles of my home. Help me protect my child as well as our cattle and wild life. Please I implore you not to allow the PHOSPHATE MINING OF 3600 ACRES IN THE MYAKKA RIVER AND PEACE RIVER AREA! Help us keep our water, air and land free of radiation.

Also please remember all phosphate mined contains uranium. Uranium is extracted from phosphate ore and there are residues left in the reclaimed air, water and land. . The decay chain for uranium

does produce polonium, however radioactive Radon gas is produced before polonium in the chain. There are no safe levels of radiation.

Thank you for your time,

Samantha Young  
2360 S. Duette Rd.  
Myakka Head, FL 34251

## Bobbi Roy

---

**From:** Emmy Landrum  
**Sent:** Thursday, February 09, 2017 3:04 PM  
**To:** Dave Woodhouse  
**Cc:** Bobbi Roy; Debbie Bassett  
**Subject:** RE: mosaic

### Wingate East - Z-14-09 – Mosaic Fertilizer, LLC/Wingate East

Thank you for writing to the Board of County Commissioners to express your concerns regarding this project. Your comments will be shared with staff from Building and Development Services and the County Attorney's Office and provided to the Clerk for the official record when the hearing continues on Wednesday, February 15, 2017.

On behalf of Chairman Benac and the other Commissioners, thank you for your interest and participation.

*Emmy Landrum*  
*Executive Assistant*  
Board of County Commissioners  
Phone (941) 745-3709  
Fax (941) 745-3790  
[emmy.landrum@mymanatee.org](mailto:emmy.landrum@mymanatee.org)



---

**From:** Dave Woodhouse [mailto:davewoodhouse@verizon.net]  
**Sent:** Tuesday, January 31, 2017 12:20 PM  
**To:** Vanessa Baugh <vanessa.baugh@mymanatee.org>  
**Subject:** mosaic

Hi Vanessa,

I trust you and the commission received my letter and attachments. It goes without saying that you have to vote your own conscience. We all leave a legacy behind us and I hope you will vote no on the Mosaic mine expansion. My science background dealing with the migration of hazardous waste including radiation through fractured bedrock says we are dealing with a ticking time bomb with Mosaic. I have seen the disastrous results first hand from subsurface contamination on hundreds of sites Any liquid release accidental or otherwise will end up in the rock. Just imagine as an analogy a network and system of highways and roads in the subsurface rock. Which road does the fluid take as it migrates. It can flow towards the Manatee, Peace, Myakka , the oceans, or wells. Extremely difficult to predict and model. The contamination can travel in any direction depending upon the fracture orientation. Mosaic's mark on our environment e.g. gypstacks and hills of waste will be around for many lifetimes. The landfills of the Romans still stand. Within the bounds of the Sunshine Law, feel free to contact me if you or your fellow commissioners wish to discuss this issue further.

Best,  
Dave Woodhouse

**I hope you  
hear us  
Carol  
Another one  
published**



**Manatee County cannot  
ignore will of people;  
reject Mosaic mining re...**

## Bobbi Roy

---

**From:** Emmy Landrum  
**Sent:** Thursday, February 09, 2017 3:04 PM  
**To:** glenfede@yahoo.com  
**Cc:** Bobbi Roy; Debbie Bassett  
**Subject:** RE: Mosaic  
**Attachments:** Mosaic Jan 30 .docx

### Wingate East - Z-14-09 – Mosaic Fertilizer, LLC/Wingate East

Thank you for writing to the Board of County Commissioners to express your concerns regarding this project. Your comments will be shared with staff from Building and Development Services and the County Attorney's Office and provided to the Clerk for the official record when the hearing continues on Wednesday, February 15, 2017.

On behalf of Chairman Benac and the other Commissioners, thank you for your interest and participation.

*Emmy Landrum*  
*Executive Assistant*  
Board of County Commissioners  
Phone (941) 745-3709  
Fax (941) 745-3790  
**emmy.landrum@mymanatee.org**



---

**From:** glenfede@yahoo.com [mailto:glenfede@yahoo.com]  
**Sent:** Monday, January 30, 2017 10:10 PM  
**To:** Betsy Benac <betsy.benac@mymanatee.org>; Priscilla WhisenantTrace <priscilla.whisenanttrace@mymanatee.org>; Stephen R Jonsson <steve.jonsson@mymanatee.org>; Robin DiSabatino <robin.disabatino@mymanatee.org>; Carol Whitmore <carol.whitmore@mymanatee.org>; Charles Smith <Charles.Smith@mymanatee.org>  
**Cc:** FOGWatch of Manatee County <fogwatchfl@yahoo.com>; Federation of Manatee County <fmccasupport@aol.com>; Mitchell Palmer <mitchell.palmer@mymanatee.org>  
**Subject:** Mosaic

All comments were very good  
The retired attorney from New York hit the nail on the head  
He saw through the smoke and mirrors of Mosaic  
Made excellent legal arguments that this board should listen to

"If we believe a thing to be bad, and if we have a right to prevent it,  
it is our duty to try to prevent it and damn the consequences."

— Lord Milner

Sent from [Mail](#) for Windows 10

Dear Commissioners,

After reviewing the 294 pages of comments on the agenda and in hearing from the public the last few days is quite apparent that the only logical conclusion that this board can do is to deny Mosaic the rezone.

Let's not forget

#### MANATEE COUNTY MISSION STATEMENT

The concept of sustainability has and always will be important to the Board of County Commissioners, the employees of County government and the citizens of Manatee County. This is evidenced by the forward thinking and often controversial decisions made such as building Lake Manatee and the Dam, buying conservation lands such as Emerson Point, Duette Park and Geraldson Farm, floating an old house down the Manatee River to relocate and save a historic structure, speed zones for Manatee protection or building a library.

Sustainability remains in the forefront in decision making as leaders balance the environment, the economy, and the human/social needs of our community.

In summary, the Board legislates policy ***to protect the health, welfare, safety and quality of life of Manatee County residents.*** They disseminate information to the public through ordinances and resolutions.

## Bobbi Roy

---

**From:** Emmy Landrum  
**Sent:** Thursday, February 09, 2017 3:03 PM  
**To:** Dominique LaVoie  
**Cc:** Bobbi Roy; Debbie Bassett  
**Subject:** RE:

### Wingate East - Z-14-09 – Mosaic Fertilizer, LLC/Wingate East

Thank you for writing to the Board of County Commissioners to express your concerns regarding this project. Your comments will be shared with staff from Building and Development Services and the County Attorney's Office and provided to the Clerk for the official record when the hearing continues on Wednesday, February 15, 2017.

On behalf of Chairman Benac and the other Commissioners, thank you for your interest and participation.

*Emmy Landrum*  
*Executive Assistant*  
Board of County Commissioners  
Phone (941) 745-3709  
Fax (941) 745-3790  
[emmy.landrum@mymanatee.org](mailto:emmy.landrum@mymanatee.org)



---

**From:** Dominique LaVoie [mailto:[gentleactive@hotmail.com](mailto:gentleactive@hotmail.com)]  
**Sent:** Monday, January 30, 2017 7:52 PM  
**To:** Priscilla WhisenantTrace <[priscilla.whisenanttrace@mymanatee.org](mailto:priscilla.whisenanttrace@mymanatee.org)>; Charles Smith <[Charles.Smith@mymanatee.org](mailto:Charles.Smith@mymanatee.org)>; Stephen R Jonsson <[steve.jonsson@mymanatee.org](mailto:steve.jonsson@mymanatee.org)>; Robin DiSabatino <[robin.disabatino@mymanatee.org](mailto:robin.disabatino@mymanatee.org)>; Vanessa Baugh <[vanessa.baugh@mymanatee.org](mailto:vanessa.baugh@mymanatee.org)>; Carol Whitmore <[carol.whitmore@mymanatee.org](mailto:carol.whitmore@mymanatee.org)>; Betsy Benac <[betsy.benac@mymanatee.org](mailto:betsy.benac@mymanatee.org)>  
**Subject:**

Dear Representatives,

I am a Resident and am really concerned about the effects of the Mosaic prospective use of the land on the quality of our water and the damages that it would cause to it and to the land/soil o that acreage. Please do not authorize them to use that land. Thanks for representing our opinions & concerns.

Dominique Lavoie (owner o 7623 37th st Circle east)



## Bobbi Roy

---

**From:** Emmy Landrum  
**Sent:** Thursday, February 09, 2017 3:01 PM  
**To:** 3PR Media  
**Cc:** Bobbi Roy; Debbie Bassett  
**Subject:** RE: Speech for Monday - Missed due to work

### Wingate East - Z-14-09 – Mosaic Fertilizer, LLC/Wingate East

Thank you for writing to the Board of County Commissioners to express your concerns regarding this project. Your comments will be shared with staff from Building and Development Services and the County Attorney's Office and provided to the Clerk for the official record when the hearing continues on Wednesday, February 15, 2017.

On behalf of Chairman Benac and the other Commissioners, thank you for your interest and participation.

*Emmy Landrum*  
*Executive Assistant*  
Board of County Commissioners  
Phone (941) 745-3709  
Fax (941) 745-3790  
**emmy.landrum@mymanatee.org**



---

**From:** 3PR Media [mailto:3pranna@gmail.com]  
**Sent:** Monday, January 30, 2017 4:09 PM  
**To:** Priscilla WhisenantTrace <priscilla.whisenanttrace@mymanatee.org>; Charles Smith <Charles.Smith@mymanatee.org>; Stephen R Jonsson <steve.jonsson@mymanatee.org>; Robin DiSabatino <robin.disabatino@mymanatee.org>; Vanessa Baugh <vanessa.baugh@mymanatee.org>; Carol Whitmore <carol.whitmore@mymanatee.org>; Betsy Benac <betsy.benac@mymanatee.org>  
**Subject:** Speech for Monday - Missed due to work

Hello County Commissioners,

My name is Anna Serena and I was at the hearing on Thursday and thought it was going to continue to Friday so I took off work Thursday & Friday to speak. I had to work today Monday, 1/30 and couldn't get off work to present my presentation that I've been working on for since the last hearing got rescheduled.

Please find this letter and add it to the record.

Hi My name is Anna Serena, and I am a Florida resident, and for the record I have been sworn.

So you all know, I was born and raised between the Myakka & Peace River Watersheds. I'm speaking with you today to ask that you deny or at very least delay the applications for the two actions that are presented before you today.

I would like to focus on these issues concerning water:

### 1 - Water Table Levels

As you know despite conservation efforts, the water needs of incoming residents and small businesses are expected to increase in the decades ahead.

There is a major concern that the water needs of the public will be overshadowed by Mosaic's 4.1 million gallon a day water allowance. This water is coming in direct contact with radium and uranium, substances that are immune to water treatment.

It's would be great to have solutions to these problems in place before approving the applicants motion.

In a recent commission meeting we saw our county water department discuss the cost benefits of collecting groundwater, which is twice as cheap as collecting treated surface water. Currently, the public utilizes the more costly surface water treatment, while the applicant enjoys the benefit of using 4.1 million gallons a day of our ground water. Why are we granting them the privilege of using our more affordable ground water?

The projected growth of the Manatee County non-mining economies is on the rise. Please do not squander our health and economic growth on the applicant's selfish and short sighted exploitation of water.

### 2- Salt Water Intrusion

This brings me to whether the applicant's excessive groundwater pumping is contributing to saltwater intrusion. Over-pumping the groundwater can cause salt water intrusion. Buffalo Creek wells have registered levels of saltwater already. The movement of saline water into freshwater aquifers, is a major threat to the public's drinking water. Over-pumping increases the odds of intrusion because saltwater's denser properties can cause it to push inland at high pressures, cross contaminating with freshwater.

The price of preventing contamination, by simply denying the applicants request, is exponentially cheaper and less dramatic than the cost of repairing a water treatment nightmare.

### 3- Reclamation vs Restoration

Mosaic claims to put it back better than it was. But "better" is subjective, and their emphasis on reclamation rather than restoration is intentionally deceptive. A drive through Bone Valley will solidify any question of the phosphate mining industry's impact on the local ecosystem. When they say they will reclaim the zone in question, they give the impression that things will be restored back to lush wetland. However, Mosaic could reclaim a former wetland-turned-mine

into a parking lot, arguing the benefit and utility of a paved lot is an improvement over native flora and fauna.

#### 4- Perennial Streams

There is an ordinance that prohibits mining perennial streams. So the applicant commissioned a dissertation to determine perennial streams. County staff identified that it was never peer reviewed by either the US Geological Survey, or Natural Resources Conservation Services (NRCS). To date, this dissertation on perennial streams has not met peer review.

As a dedicated tax paying resident I ask nicely that a detailed and comprehensive third-party study of our unique stream flows, and aquifer system be developed and thoroughly studied before any mining permits be approved by the county.

#### 5 - Personal Impact

I thought of local sinkhole akin to Mosaic's Mulberry, Florida hole that dumped 215 million gallons of radioactive waste into the aquifer is terrifying. Even without the fixture of poison gypstacks on-site, the waste contained in their clay settling areas still warrant extreme caution. I'm worried a Flint Michigan crisis would be on our hands. We have a long history of hurricanes, storms, and tornados, and a another breach in their infrastructure would be costly and devastating.

Furthermore, it is completely unethical to gift out neighbors in Bartow and New Wales or most toxic waste. It is un-American. Be sure to ask Mosaic how often they indulge in a nice cold glass of Mulberry well water.

As a child I enjoyed growing up on a natural Horse Creek and would like my kids, and grandkids to have that same opportunity.

The BoCC should deny the application until there is a thorough understanding of the impact of Mosaic's Mulberry sinkhole discharge. The effects on the community will be severe, but not swift. Watch cancer and respiratory problems rise, and this situation goes un-dealt-with. And watch Mosaic pack-up and leave for their next operation, charming another community with fairs and gymnasiums until their ecosystem is lost, and the land is wiped-bare of any precious minerals.

As elected officials, it is your job to protect this County's drinking water. Once more, I respectfully request you do just that. Please deny Mosaic's request today.

Thank you. Anna

Thank you very much,  
Anna Serena

## Bobbi Roy

---

**From:** Carol Whitmore  
**Sent:** Monday, January 30, 2017 5:02 PM  
**To:** Bobbi Roy; Robert Brown  
**Subject:** FW: How dare they try to say their Evil act was an Act of God? Re: Screenshots Kristie Simpson phone

-----Original Message-----

From: krsimpson1@gmail.com [mailto:krsimpson1@gmail.com]  
Sent: Monday, January 30, 2017 5:01 PM  
To: Priscilla WhisenantTrace; Charles Smith; Stephen R Jonsson; Robin DiSabatino; Carol Whitmore; Betsy Benac  
Subject: How dare they try to say their Evil act was an Act of God? Re: Screenshots Kristie Simpson phone

How dare they try to say their Evil act was an Act of God?

With no room to store the radioactive waste have you asked yourself if the reason they are sending the waste to the New Wales Sinkhole plant because "Man made sink holes" are a new great way to dispose of the waste?"

Limestone is a sponge.

Florida is a giant sponge and you have 25 gypsum stacks that are ticking time bombs and there will be more made. The phosphogypsum stacks have proven radioactive commingled waste from the production of fertilizer and nuclear weapons. They were busted for doing that. Mosaic made sink holes.

That lady speaking about the show place tours couldn't walk or breathe... The tours are of the small areas they reclaimed which are nothing in comparison to the thousands and thousands of acres destroyed.

Many neighborhoods built on reclaimed land are having huge issues with radon, lead, arsenic etc. I'm sure you have read the articles. Come drive for miles around my home and you will see no trespassing signs Mosaic property for miles and miles. They are reclaiming very little. They should be required to reclaim all land before mining new land or they will file bankruptcy and not ever do it. When IMC closed down they took all the waste and sprayed it over the ocean.

This link is the best article to expose and summarize the truth written by Gary Pittman. This is from past

<http://www.sonic.net/kryptox/environ/m/death.htm>

Kristie Simpson  
Licensed Mortgage Broker, NMLS 356019  
813-200-7931 Office  
813-464-8039 Fax  
[www.SkyApply.com](http://www.SkyApply.com)

> On Jan 30, 2017, at 3:37 PM, krsimpson1@gmail.com wrote:

>

> Hello Commissioners,

> What I was trying to show and my presentation was that the map show where the water is flowing (attached) but look where mosaic is testing. Do you think it's just coincidence that they chose not to test the well and the areas the water is flowing? However, Of the few that were tested South of the sinkhole where the water is flowing 25% of them show

abnormal readings. See map from Mosaic website of well testing results. Pink/Purple color means wells that tested abnormal. Also of the wells that they did test that follow the veins of the Alafaya River from their plants you can see that that is where all of those wells tested abnormal. See Google map overlaid with Moses positive tests in about a month ago they are marked in red on the Google map. Attached.

> (I'm still shaking ... lol)

>

> <image1.PNG>

>

>

> <image2.PNG>

>

>

> <image3.PNG>

>

>

>

> Kristie Simpson

> Licensed Mortgage Broker, NMLS 356019

> 813-200-7931 Office

> 813-464-8039 Fax

> [www.SkyApply.com](http://www.SkyApply.com)

>

## Bobbi Roy

---

**From:** Emmy Landrum  
**Sent:** Thursday, February 09, 2017 3:01 PM  
**To:** krsimpson1@gmail.com  
**Cc:** Bobbi Roy; Debbie Bassett  
**Subject:** RE: Screenshots Kristie Simpson phone

### Wingate East - Z-14-09 – Mosaic Fertilizer, LLC/Wingate East

Thank you for writing to the Board of County Commissioners to express your concerns regarding this project. Your comments will be shared with staff from Building and Development Services and the County Attorney's Office and provided to the Clerk for the official record when the hearing continues on Wednesday, February 15, 2017.

On behalf of Chairman Benac and the other Commissioners, thank you for your interest and participation.

*Emmy Landrum*  
*Executive Assistant*  
Board of County Commissioners  
Phone (941) 745-3709  
Fax (941) 745-3790  
[emmy.landrum@mymanatee.org](mailto:emmy.landrum@mymanatee.org)



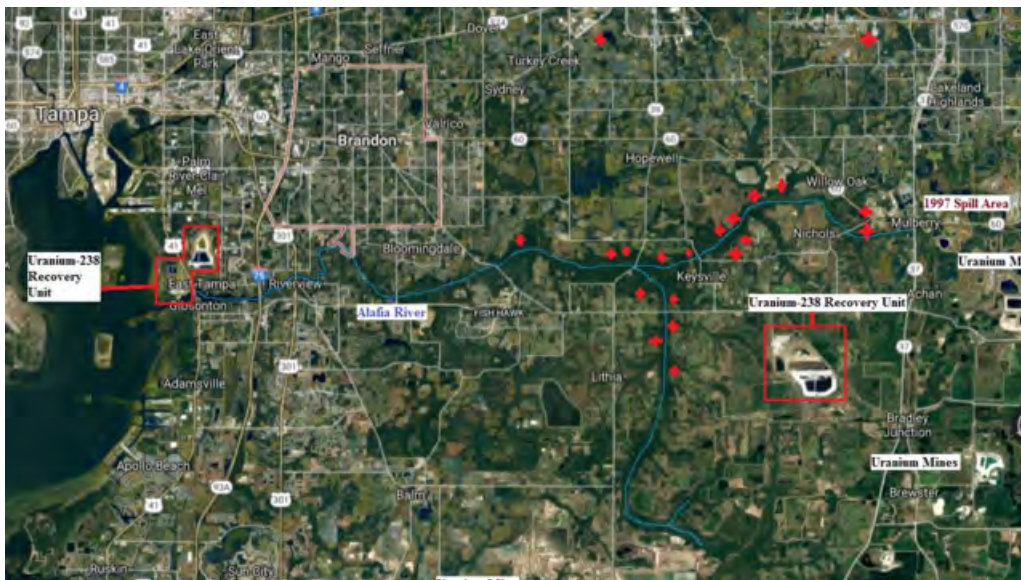
---

**From:** krsimpson1@gmail.com [mailto:krsimpson1@gmail.com]  
**Sent:** Monday, January 30, 2017 3:38 PM  
**To:** Priscilla WhisenantTrace <priscilla.whisenantrace@mymanatee.org>; Charles Smith <Charles.Smith@mymanatee.org>; Stephen R Jonsson <steve.jonsson@mymanatee.org>; Robin DiSabatino <robin.disabatino@mymanatee.org>; Carol Whitmore <carol.whitmore@mymanatee.org>; Betsy Benac <betsy.benac@mymanatee.org>  
**Subject:** Screenshots Kristie Simpson phone

Hello Commissioners,

What I was trying to show and my presentation was that the map show where the water is flowing (attached) but look where mosaic is testing. Do you think it's just coincidence that they chose not to test the well and the areas the water is flowing? However, Of the few that were tested South of the sinkhole where the water is flowing 25% of them show abnormal readings. See map from Mosaic website of well testing results. Pink/Purple color means wells that tested abnormal. Also of the wells that they did test that follow the veins of the Alafaya River from their plants you can see that that is where all of those wells tested abnormal. See Google map overlaid with Moses positive tests in about a month ago they are marked in red on the Google map. Attached.  
(I'm still shaking ... lol)





Kristie Simpson  
 Licensed Mortgage Broker, NMLS 356019  
 813-200-7931 Office



813-464-8039 Fax  
[www.SkyApply.com](http://www.SkyApply.com)

## Bobbi Roy

---

**From:** Emmy Landrum  
**Sent:** Thursday, February 09, 2017 3:01 PM  
**To:** Melissa Kayan  
**Cc:** Bobbi Roy; Debbie Bassett  
**Subject:** RE: Mosaic Expansion

### Wingate East - Z-14-09 – Mosaic Fertilizer, LLC/Wingate East

Thank you for writing to the Board of County Commissioners to express your concerns regarding this project. Your comments will be shared with staff from Building and Development Services and the County Attorney's Office and provided to the Clerk for the official record when the hearing continues on Wednesday, February 15, 2017.

On behalf of Chairman Benac and the other Commissioners, thank you for your interest and participation.

*Emmy Landrum*  
*Executive Assistant*  
Board of County Commissioners  
Phone (941) 745-3709  
Fax (941) 745-3790  
[emmy.landrum@mymanatee.org](mailto:emmy.landrum@mymanatee.org)



**From:** Melissa Kayan [mailto:[melissakayan@gmail.com](mailto:melissakayan@gmail.com)]  
**Sent:** Monday, January 30, 2017 4:07 PM  
**To:** Vanessa Baugh <[vanessa.baugh@mymanatee.org](mailto:vanessa.baugh@mymanatee.org)>  
**Subject:** Mosaic Expansion

Honorable Baugh:

Thank you for serving our community as a Manatee County Commissioner. I know you hold the Lakewood Ranch area dear to your heart, and so do I. Mosaic's plans of expanding closer to our neighborhoods is not in our best interest. I understand it will create jobs temporarily, but the impact to our water and possibly the land will be forever. There is simply too much at stake with no guarantees.

I urge you to vote against the expansion of Mosaic's mining operations in Manatee County.

Sincerely,  
Melissa E. Kayan  
Lakewood Ranch  
(813) 270-8388



## Bobbi Roy

---

**From:** Emmy Landrum  
**Sent:** Thursday, February 09, 2017 2:59 PM  
**To:** Ronald Dennis  
**Cc:** Bobbi Roy; Debbie Bassett  
**Subject:** RE: Delay of Mosaic Request for Zoning Change

### Wingate East - Z-14-09 – Mosaic Fertilizer, LLC/Wingate East

Thank you for writing to the Board of County Commissioners to express your concerns regarding this project. Your comments will be shared with staff from Building and Development Services and the County Attorney's Office and provided to the Clerk for the official record when the hearing continues on Wednesday, February 15, 2017.

On behalf of Chairman Benac and the other Commissioners, thank you for your interest and participation.

*Emmy Landrum*  
*Executive Assistant*  
Board of County Commissioners  
Phone (941) 745-3709  
Fax (941) 745-3790  
[emmy.landrum@mymanatee.org](mailto:emmy.landrum@mymanatee.org)



**From:** Ronald Dennis [mailto:rondennis50@gmail.com]  
**Sent:** Monday, January 30, 2017 9:23 AM  
**To:** Stephen R Jonsson <steve.jonsson@mymanatee.org>  
**Subject:** Delay of Mosaic Request for Zoning Change

Dear Commissioner Jonsson,

**I strongly encourage you to delay taking any action on Mosaic's zoning change until they find a better and safer way to dispose of the toxic waste called phosphogypsum, which contains uranium and radium, besides gypsum stacks.** You and your fellow commissioners should pause and assess the sinkhole that recently occurred at Mosaic's New Wales fertilizer plant in Polk County. I strongly believe that you should consider this incident as a timely canary in the coal mine and initiate your own independent study of why this occurred (i.e., failure of pond liner, pond leakage that dissolved limestone underneath pond) and what impact it had and will have on public health and the environment (i.e., contamination of nearby wells and the Florida Aquifer) before taking any action on Mosaic's zoning change request.

Even though the recent editorial in the *Bradenton Herald* noted that the New Wales and other releases of the acidic wastewater from gypsum stacks are "rare occurrences," they nonetheless can have a significant impact on our environment, especially with respect to a present and future drinking water source, the Florida Aquifer.

Making the rare occurrence argument is like saying the nuclear reactor disaster in Japan caused by the tidal wave is such an occurrence; however, its impact on the environment will be felt for generations to come.

Mosaic has stated that mining area covered by their zoning change request will not include a gypsum stack. However, such a stack will have to be generated somewhere. Somewhere will most likely be Polk County, which is north of Manatee County. Since the Florida Aquifer flows from north to south in a westerly direction, failure of a Polk County gypsum stack could impact the part of the Florida Aquifer that Manatee County may draw on in the not too distant future.

I strongly believe that you and your fellow commissioners should delay taking action on the Mosaic zoning change request until you are confident that Mosaic has found a better and safer way to treat the acidic wastewater that will ultimately result from their future mining activities in Manatee County so as to insure the safety and integrity of the Florida Aquifer as a drinking water source for all of our citizens in the near future. Citizens both living and yet to be born will thank you for this.

Sincerely,

Ronald M. Dennis  
6807 7th Avenue West  
Bradenton, FL 34209

941-251-3606

To: Manatee Board of County Commissioners

From : David Woodhouse, P.G.

Date : January 29, 2017

Subject: Mosaic Expansion Hearing

Dear Commissioners,

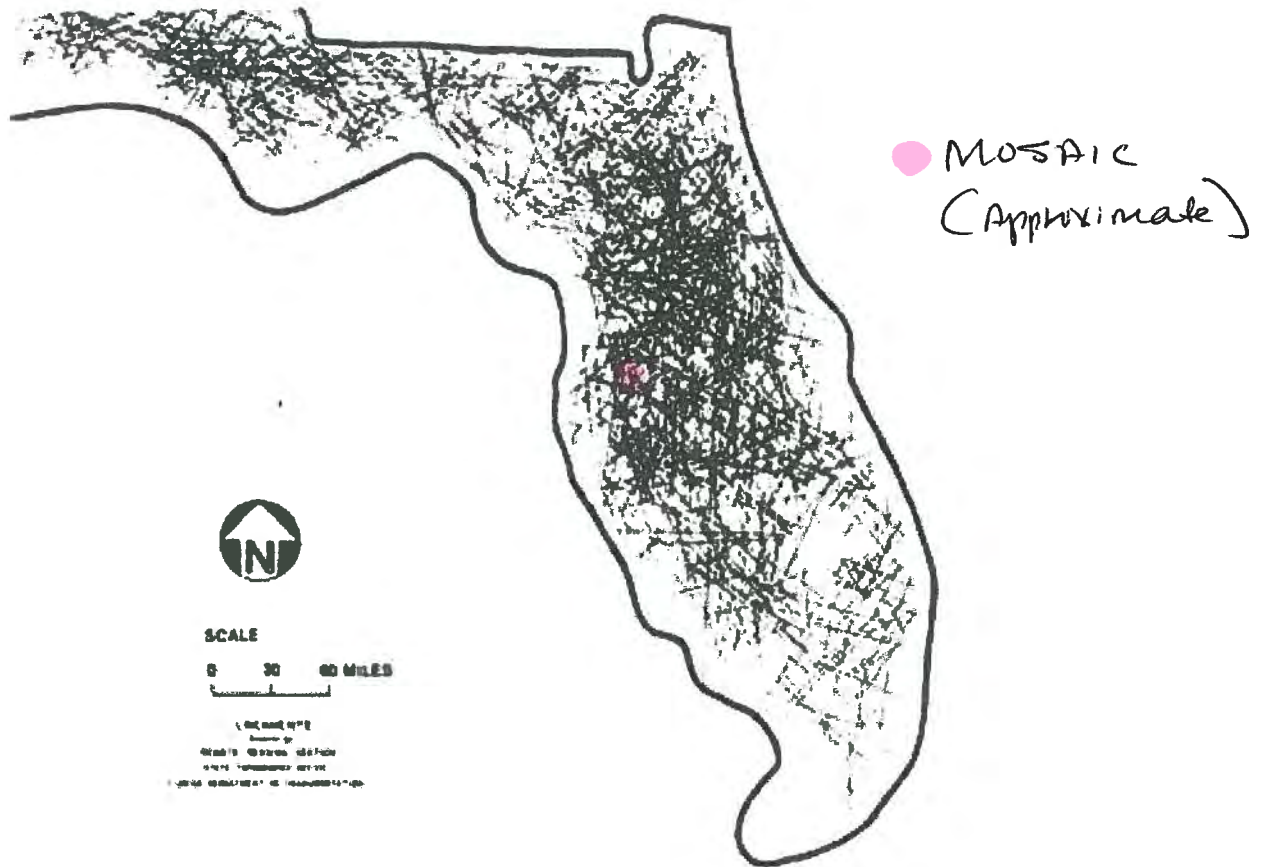
I attended the Thursday meeting but the large number of speakers precluded my testimony. I will be unable to speak at the Monday hearing but I request that you enter this letter into the public record. If you will allow me, I am a professional and registered (FLA) geologist and specifically a hydrogeologist and am opposed to the Mosaic mine. I have several years of experience studying the flow of fluids in the environment and as such include water, hazardous waste, and non-hazardous waste. My specialty is flow through fractured bedrock and I am a court recognized expert in this field. I have consulted to the EPA, the Corps of Engineers, the Nuclear Regulatory Commission, the Department of Justice, the US Military, and engineering firms on environmental issues. Currently I work on toxic tort cases with a scientific consulting team that also toxicologists, doctors, computer modelers, medical geographers, etc. The team members also worked with Erin Brockovich on the Pacific Gas and Electric case. We know first-hand the effects of contaminants released from industry and their devastating effects on the populace.

Today I traveled through the pastoral and bucolic countryside to visit the Wingate East mine in Duette. The scene was one of trucks coming and going, a denuded countryside, dredged and strip-mined, miles of pipelines, and machines conveying black rock, soil, or some other unknown into piles. As I drove off, I could not help but notice what appear to be the hills of gypstacks around the area that will be there until kingdom come

I have attached some figures which demonstrate the fact that any release from the Mosaic plant will potentially harm both the environment and residents. All water will migrate to an environmental sink which locally can be a river, stream, or lake and ultimately on a larger scale the ocean. Wells in the area can create a cone of depression that can induce fluids such as could be released by Mosaic to flow to them. Florida is underlain by fractured carbonate rock which we know as limestone. Figures included show the fractures called lineaments in the State of Florida as a whole and also in the area of Mosaic. A lineament is the surficial expression of the fracture as viewed from above. It can be a stream which has followed a fracture or a difference in the topography caused by erosion along a zone of weakness like a fracture. The fluid travels downward by gravity through the bedrock and can migrate through a myriad of fractures potentially in any direction depending upon their orientation. Attached is also a figure showing a sinkhole/depression that can form in the fractures. Mosaic's use of sulfuric acid and the formation of phosphoric acid can cause sinkholes. Any migration through the fractured rock of radiation and heavy carcinogenic metals resulting from the mining process is critical.

Please contact me if I can assist you.


A handwritten signature in black ink, appearing to read "David Woodhouse", with a long horizontal flourish extending to the right.



- Lineaments mapped in the state of Florida by the Florida Department of Transportation (FDOT, 1973)

<sup>1</sup>  
**Figure 3. Lineament map of Florida by the Florida Department of Transportation (FDOT, 1973). (Modified from Hazlett, 1989).**

DAVID WOODHOUSE, P.G., CPG



**WOODHOUSE GEOSCIENCES**

• Hydrogeology • Construction / Geologic Forensics • Geotechnical

6203 Skyward Court  
Bradenton, FL 34203

Tel 941-773-8682  
~~Fax 941-773-8682~~  
davewoodhouse@verizon.net



Figure 4. Site map showing lineaments identified in south Florida on Landsat mosaic.  
2



DRAFT Lineament Analysis of South Florida for ASR Regional Study

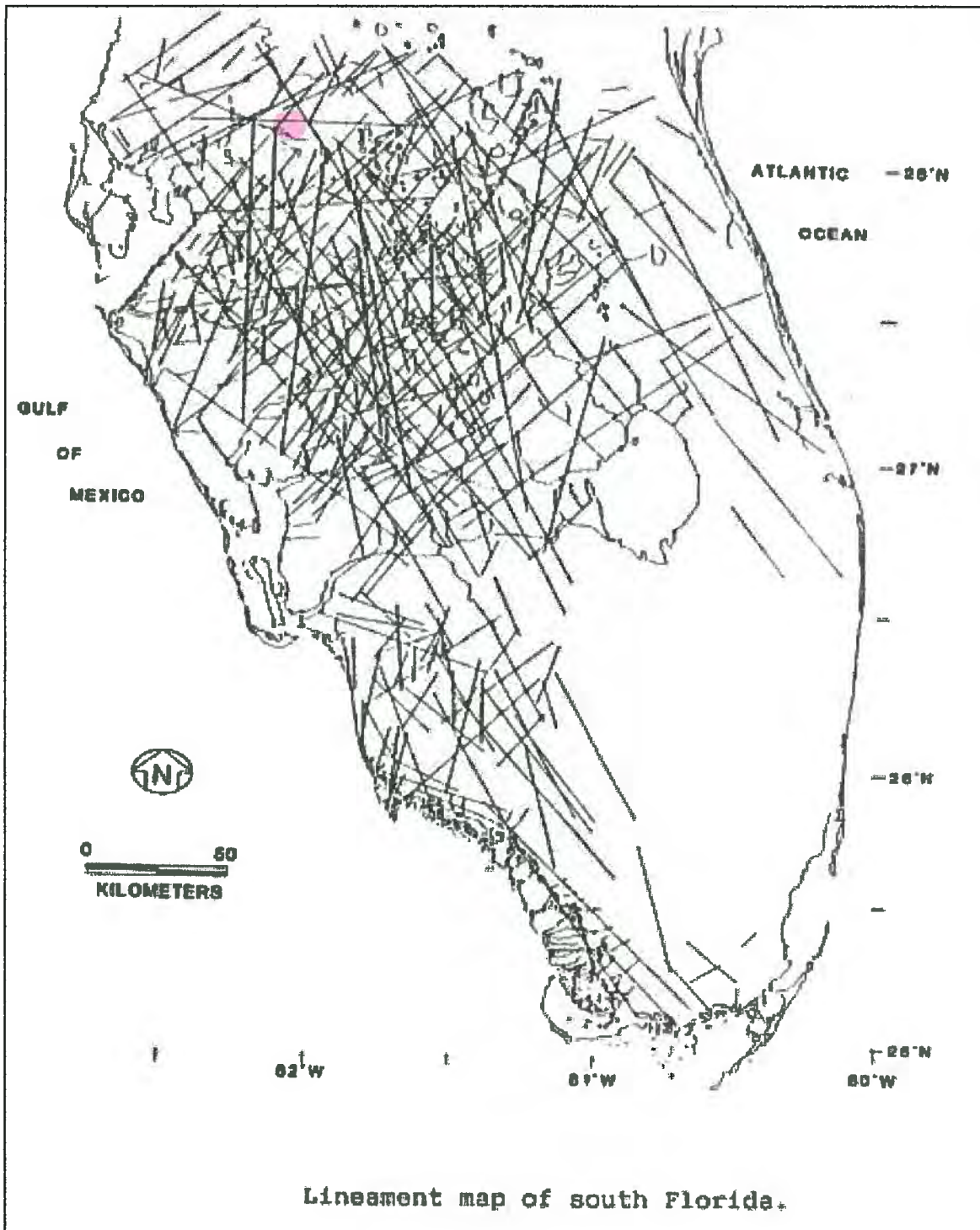


Figure 4 Lineament map of south Florida (from Culbreth, 1988).

● Approximate Mosaic Location



# Structural Geology-Lineaments by Location

Cochise College

Specialized Geology References

Geology Home Page

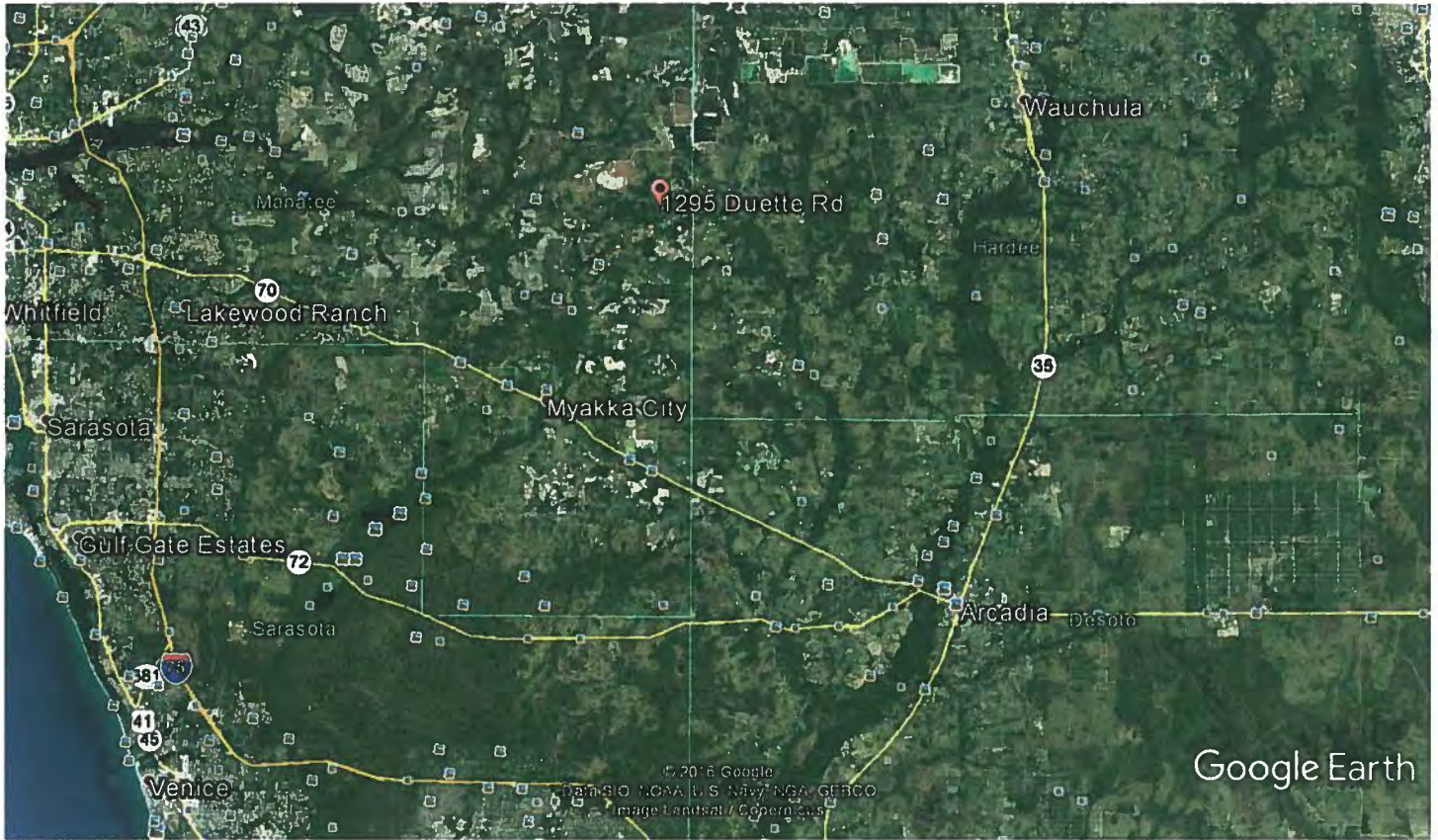
Roger Weller, geology instructor [weller@cochise.edu](mailto:weller@cochise.edu)

last edited: 12/20/15



Florida lineaments





Google Earth



Figure 5

MOSAIC SITE ●

River and streams indicate lineaments

# Water Well Location by Fracture Trace Mapping

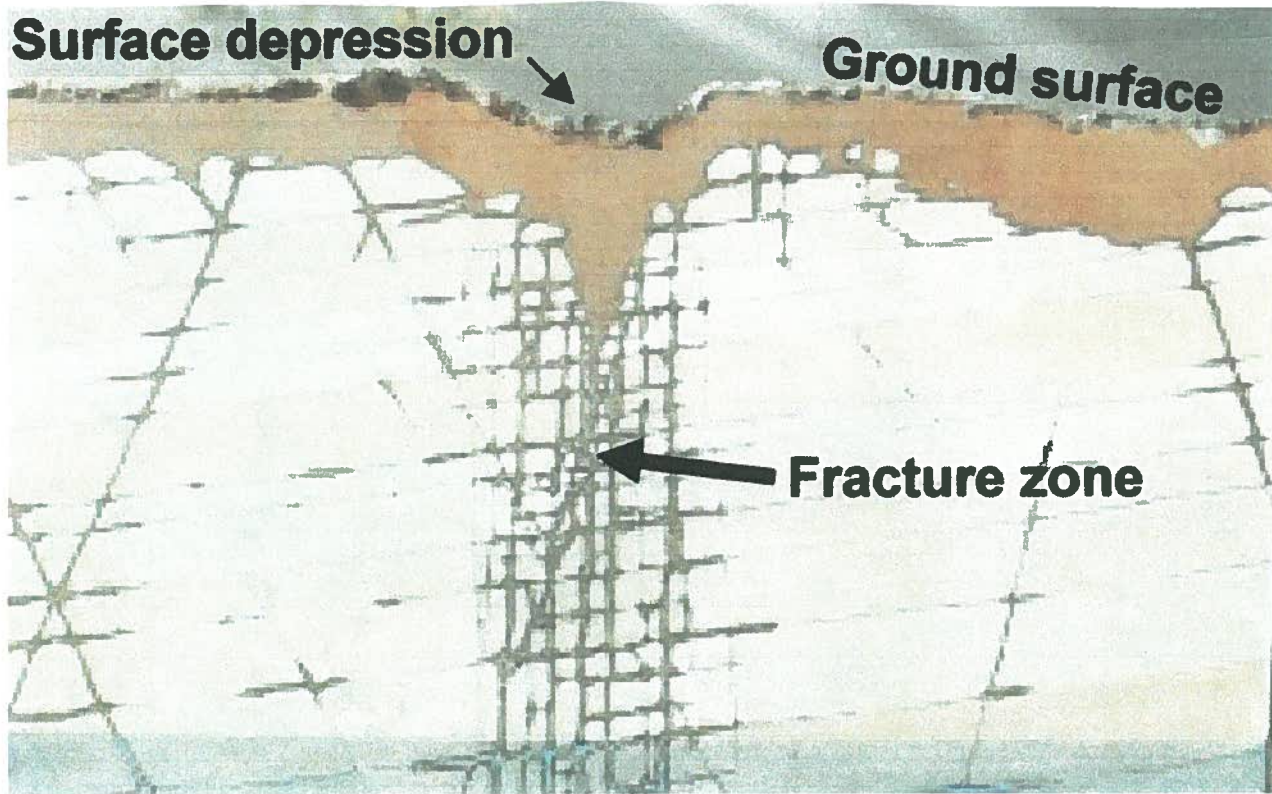
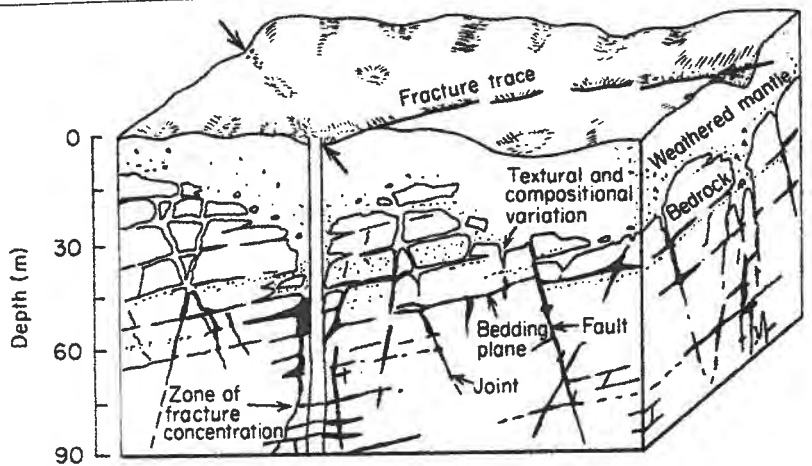
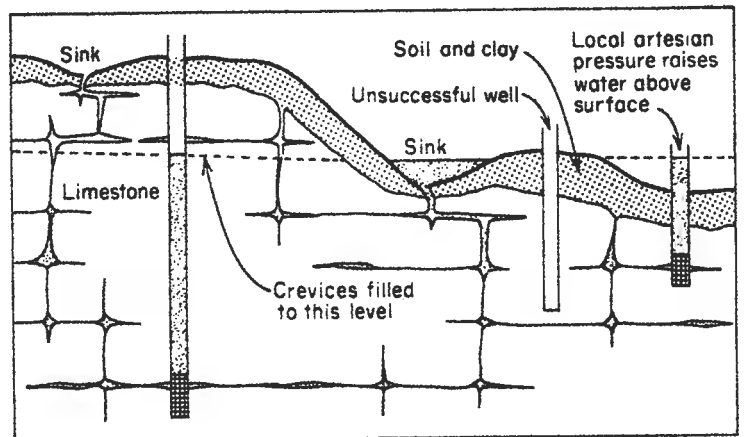


Figure 6. Diagram of a zone of fractures in a cross-section view of limestone bedrock. Notice the surface depressions that often accompany underground fracture zones.



**Figure 7** Occurrence of permeability zones in fractured carbonate rock. Highest well yields occur in fracture intersection zones (after Lattman and Parizek, 1964).



**Figure 8** Schematic illustration of the occurrence of groundwater in carbonate rock in which secondary permeability occurs along enlarged fractures and bedding plane openings (after Walker, 1956; Davis and De Wiest, 1966).

## **Bobbi Roy**

---

**From:** Marianne Lopata  
**Sent:** Monday, January 30, 2017 2:57 PM  
**To:** 'Dianne Laing'  
**Cc:** Bobbi Roy; Debbie Bassett  
**Subject:** RE: A few questions for Mosaic

### **Wingate East - Z-14-09 – Mosaic Fertilizer, LLC/Wingate East**

Thank you for writing to the Board of County Commissioners to express your concerns regarding this project. I will share your comments with the Commissioners and staff from Building and Development Services and the County Attorney's Office for review.

As a quasi-judicial item commissioners must refrain from prejudging this project outside of the public hearing which was opened on January 26 and continued to Monday, January 30, 2017, at 10 a.m. At that time the commissioners will continue to take public comment and be able to discuss this project publicly.

You are welcome to attend the public hearing to voice your concerns and opinions. On behalf of Chairman Benac and the other Commissioners, thank you for your interest and participation.

#### **Marianne Lopata**

Executive Administrative Assistant  
Board of County Commissioners  
Phone: (941) 745-3707; Fax: (941) 745-3790  
E-mail: [marianne.lopata@mymanatee.org](mailto:marianne.lopata@mymanatee.org)



---

**From:** Dianne Laing [mailto:[dalaing59@yahoo.com](mailto:dalaing59@yahoo.com)]  
**Sent:** Monday, January 30, 2017 7:56 AM  
**To:** Priscilla WhisenantTrace; Betsy Benac; Carol Whitmore  
**Subject:** A few questions for Mosaic

Dear Ms. Trace, Ms. Benac and Ms. Whitmore,

Last Thursday's hearing left me saddened and fairly certain the commissioners will approve Mosaic's request to expand its mining operations in Manatee county. From the early lineup of Mosaic employees being brought breakfast in order to secure an overwhelming presence in the council chambers to compliments paid Mosaic by commissioner DiSabatino and the commissioners' staff, the leaning in the Mosaic's favor was almost tangible.

Mosaic's financial impact on Manatee county and Florida pales compared to that of fishing, tourism, recreation and agriculture and all of that is nothing compared to the well being of Florida's inhabitants. The damage done by phosphate mining takes decades to reclaim, and in the case of unexpected catastrophic events risks the water needed to sustain life itself. See for yourself on GoogleEarth the wretched end product their "reclaimed" efforts actually produce. No rational person would build a house on or near the moonscapes they leave when they and



their jobs move to new sites.

The commissioners denied Mosaic's mining plans years ago. What has changed? Nothing I heard Thursday indicated their activities provide truly overwhelming good to the community. Donations of fire stations and to wet lands funds are useless if the land, water and air are destroyed.

Please read and consider Tom Tyron's comments and questions from his January 22, Herald Tribune blog. Approval need not be a forgone conclusion. I am shaken to read the clay settling area will be only 500 feet from the Lake Manatee watershed.

<http://heraldtribune.com/opinion/20170122/tryon-few-questions-to-put-to-mosaic>

Dianne and Matt Laing  
Manatee county district 1 residents

Sent from my iPad

## **Bobbi Roy**

---

**From:** Marianne Lopata  
**Sent:** Monday, January 30, 2017 2:57 PM  
**To:** 'Nora Sinclair'  
**Cc:** Bobbi Roy; Debbie Bassett  
**Subject:** RE: Mosaic

### **Wingate East - Z-14-09 – Mosaic Fertilizer, LLC/Wingate East**

Thank you for writing to the Board of County Commissioners to express your concerns regarding this project. I will share your comments with the Commissioners and staff from Building and Development Services and the County Attorney's Office for review.

As a quasi-judicial item commissioners must refrain from prejudging this project outside of the public hearing which was opened on January 26 and continued to Monday, January 30, 2017, at 10 a.m. At that time the commissioners will continue to take public comment and be able to discuss this project publicly.

You are welcome to attend the public hearing to voice your concerns and opinions. On behalf of Chairman Benac and the other Commissioners, thank you for your interest and participation.

#### **Marianne Lopata**

Executive Administrative Assistant  
Board of County Commissioners  
Phone: (941) 745-3707; Fax: (941) 745-3790  
E-mail: [marianne.lopata@mymanatee.org](mailto:marianne.lopata@mymanatee.org)



---

**From:** Nora Sinclair [mailto:norasinclair@msn.com]  
**Sent:** Monday, January 30, 2017 7:54 AM  
**To:** Priscilla WhisenantTrace; Charles Smith; Stephen R Jonsson; Robin DiSabatino; Vanessa Baugh; Carol Whitmore; Betsy Benac  
**Subject:** Mosaic

I am writing to you as a voter in Manatee County to ask that you not approve Mosaic's request to expand their phosphate mining operation. Their proposed area for mining includes land by the Peace River, which pits our drinking water at risk for contamination. Please vote no on their request.

Sincerely,

Nora Sinclair



## **Bobbi Roy**

---

**From:** Marianne Lopata  
**Sent:** Monday, January 30, 2017 11:19 AM  
**To:** 'Kate Meeks-Hall'  
**Cc:** Bobbi Roy; Debbie Bassett  
**Subject:** RE: Mosaic expansion

### **Wingate East - Z-14-09 – Mosaic Fertilizer, LLC/Wingate East**

Thank you for writing to the Board of County Commissioners to express your concerns regarding this project. I will share your comments with the Commissioners and staff from Building and Development Services and the County Attorney's Office for review.

As a quasi-judicial item commissioners must refrain from prejudging this project outside of the public hearing which was opened on January 26 and continued to Monday, January 30, 2017, at 10 a.m. At that time the commissioners will continue to take public comment and be able to discuss this project publicly.

You are welcome to attend the public hearing to voice your concerns and opinions. On behalf of Chairman Benac and the other Commissioners, thank you for your interest and participation.



**From:** Kate Meeks-Hall [mailto:t.rex.and.mama@gmail.com]  
**Sent:** Sunday, January 29, 2017 10:53 PM  
**To:** Priscilla WhisenantTrace; Charles Smith; Stephen R Jonsson; Robin DiSabatino; Vanessa Baugh; Carol Whitmore; Betsy Benac; Marianne Lopata; Sheri Smith; kim.seifke@gmail.com  
**Subject:** Mosaic expansion

Please NO expansion on the Mosaic phosphorous mining site. We have seen the disastrous effect of Mosaic mining in Mulberry and the sinkhole and poisoning of the aquifer. Please don't let this happen to the Peace River. This is our Drinking Water. Please do not let ManaSota become Flint Michigan.

I look forward to seeing this expansion blocked.

Thank you for your attention to this matter.

Kate Meeks-Hall  
3309 Pine Valley Drive  
Sarasota, FL 34239  
410 299 9928

## **Bobbi Roy**

---

**From:** Marianne Lopata  
**Sent:** Monday, January 30, 2017 11:19 AM  
**To:** 'jkaiser998@aol.com'  
**Cc:** Bobbi Roy; Debbie Bassett  
**Subject:** RE: MOSAIC Federation concern for hearing  
**Attachments:** Federation concerns related to MOSAIC Zoning change request.docx

### **Wingate East - Z-14-09 – Mosaic Fertilizer, LLC/Wingate East**

Thank you for writing to the Board of County Commissioners to express your concerns regarding this project. I will share your comments with the Commissioners and staff from Building and Development Services and the County Attorney's Office for review.

As a quasi-judicial item commissioners must refrain from prejudging this project outside of the public hearing which was opened on January 26 and continued to Monday, January 30, 2017, at 10 a.m. At that time the commissioners will continue to take public comment and be able to discuss this project publicly.

You are welcome to attend the public hearing to voice your concerns and opinions. On behalf of Chairman Benac and the other Commissioners, thank you for your interest and participation.



**From:** jkaiser998@aol.com [mailto:jkaiser998@aol.com]  
**Sent:** Sunday, January 29, 2017 9:58 PM  
**To:** Vanessa Baugh; Marianne Lopata  
**Subject:** MOSAIC Federation concern for hearing

Attached is a letter that indicates the FMCCA concern related to the re zoning of land at the request of MOSAIC

Federation concerns related to MOSAIC Zoning change request.

One of our concerns is related to potable water needs for future use.

The long range thinking that provided the purchase and development of Lake Manatee was an amazing decision that was not popular at the time, but has proven to be one of the best resources for Manatee County. We are now in a similar situation with the amount of water that is being used by MOSAIC and the increased water need related to the approval of increased population development. The report of available water for the next 25 years is comforting but what happens after that???

The FMCCA has suggested legislation to the Delegation to provide a statute which will provide additional potable water sources from the MOSAIC and other large land mining area.

“Enact legislation to establish potable water supplies for public use after excavation activities have ceased on a tract of land”

This legislation will provide a responsibility for any mining operations to create reservoir areas for potable water.

Before approval there needs to be agreements for providing sources for potable water as part of the mining operations.

Now is the time for proactive decisions that will ensure water for the future of Manatee County.

## Bobbi Roy

---

**From:** Marianne Lopata  
**Sent:** Monday, January 30, 2017 11:18 AM  
**To:** 'Eileen Naaman'  
**Cc:** Bobbi Roy; Debbie Bassett  
**Subject:** RE: Please limit Mosaic permitting requests

### Wingate East - Z-14-09 – Mosaic Fertilizer, LLC/Wingate East

Thank you for writing to the Board of County Commissioners to express your concerns regarding this project. I will share your comments with the Commissioners and staff from Building and Development Services and the County Attorney's Office for review.

As a quasi-judicial item commissioners must refrain from prejudging this project outside of the public hearing which was opened on January 26 and continued to Monday, January 30, 2017, at 10 a.m. At that time the commissioners will continue to take public comment and be able to discuss this project publicly.

You are welcome to attend the public hearing to voice your concerns and opinions. On behalf of Chairman Benac and the other Commissioners, thank you for your interest and participation.



-----Original Message-----

**From:** Eileen Naaman [mailto:eonboard@icloud.com]  
**Sent:** Sunday, January 29, 2017 8:31 PM  
**To:** Priscilla WhisenantTrace; Charles Smith; Stephen R Jonsson; Robin DiSabatino; Vanessa Baugh; Carol Whitmore; Betsy Benac  
**Subject:** Please limit Mosaic permitting requests

Dear Commissioners,

Thank you for your time and consideration given to public input last week regarding Mosaics requests. I listened to all the information and concerns during the day. I was not called to speak due to limited time for all those that came to express their feelings. I am not able to be present tomorrow but would like to express my concerns via this letter instead.

I see there are many issues to consider and am sure you will carefully make your decisions. I ask as a concerned sarasota country resident of 35 years and Florida resident of almost 60 years that you protect our declining natural resources for the benefit of the all. Please at least consider Denying use of any and all areas close to headwaters of our rivers and wetlands. The jobs provided by phosphate mining in the area are temporary possibly another generation at most. I hope that you will not allow our rivers, and wildlife to be adversely affected for the temporary gain.

Thank you again for your time and consideration Eileen Naaman DVM

Sent from my iPad

## Bobbi Roy

---

**From:** Marianne Lopata  
**Sent:** Monday, January 30, 2017 11:18 AM  
**To:** 'regine mullery'  
**Cc:** Bobbi Roy; Debbie Bassett  
**Subject:** RE:

### Wingate East - Z-14-09 – Mosaic Fertilizer, LLC/Wingate East

Thank you for writing to the Board of County Commissioners to express your concerns regarding this project. I will share your comments with the Commissioners and staff from Building and Development Services and the County Attorney's Office for review.

As a quasi-judicial item commissioners must refrain from prejudging this project outside of the public hearing which was opened on January 26 and continued to Monday, January 30, 2017, at 10 a.m. At that time the commissioners will continue to take public comment and be able to discuss this project publicly.

You are welcome to attend the public hearing to voice your concerns and opinions. On behalf of Chairman Benac and the other Commissioners, thank you for your interest and participation.



-----Original Message-----

**From:** regine mullery [mailto:ginoubrickhouse@live.com]  
**Sent:** Sunday, January 29, 2017 8:09 PM  
**To:** Vanessa Baugh  
**Subject:**

My name is Regine Mullery .I am emailing to inform the (Board of County Commissioners/Commissione\_) that I oppose Mosaic's Co. request to rezone 3,800 acres of land in order to expand their phosphate mining operations in Manatee County.

Phosphate mining produces millions of tons of radioactive waste per year which contaminates air and water, it also destroys ecosystems and land, which is never returned to its previous state. As a representative of the best interests of the people of Manatee County, I urge (the Board of County Commissioners/Commissioner to vote against Mosaic's request on January 26th.

Thank you.

Sent from my iPad

## **Bobbi Roy**

---

**From:** Marianne Lopata  
**Sent:** Monday, January 30, 2017 11:17 AM  
**To:** 'Robin Miller'  
**Cc:** Bobbi Roy; Debbie Bassett  
**Subject:** RE: Mosaic

### **Wingate East - Z-14-09 – Mosaic Fertilizer, LLC/Wingate East**

Thank you for writing to the Board of County Commissioners to express your concerns regarding this project. I will share your comments with the Commissioners and staff from Building and Development Services and the County Attorney's Office for review.

As a quasi-judicial item commissioners must refrain from prejudging this project outside of the public hearing which was opened on January 26 and continued to Monday, January 30, 2017, at 10 a.m. At that time the commissioners will continue to take public comment and be able to discuss this project publicly.

You are welcome to attend the public hearing to voice your concerns and opinions. On behalf of Chairman Benac and the other Commissioners, thank you for your interest and participation.



-----Original Message-----

**From:** Robin Miller [mailto:robin@roblimo.com]  
**Sent:** Sunday, January 29, 2017 5:21 PM  
**To:** Betsy Benac  
**Subject:** Mosaic

Approving more phosphate mining always proves to be a mistake in the long, so let's not do it. Thanks.

--

Robin 'Roblimo' Miller  
Bradenton, Florida, USA  
- Freelance writer & videomaker  
- Member, Internet Press Guild  
- Member, American Legion

## Bobbi Roy

---

**From:** Marianne Lopata  
**Sent:** Monday, January 30, 2017 11:16 AM  
**To:** 'JOHN HADDOCK'  
**Cc:** Bobbi Roy; Debbie Bassett  
**Subject:** RE: Mosaic Rezoning Application

### Wingate East - Z-14-09 – Mosaic Fertilizer, LLC/Wingate East

Thank you for writing to the Board of County Commissioners to express your concerns regarding this project. I will share your comments with the Commissioners and staff from Building and Development Services and the County Attorney's Office for review.

As a quasi-judicial item commissioners must refrain from prejudging this project outside of the public hearing which was opened on January 26 and continued to Monday, January 30, 2017, at 10 a.m. At that time the commissioners will continue to take public comment and be able to discuss this project publicly.

You are welcome to attend the public hearing to voice your concerns and opinions. On behalf of Chairman Benac and the other Commissioners, thank you for your interest and participation.



-----Original Message-----

**From:** JOHN HADDOCK [mailto:ccmrp2@msn.com]  
**Sent:** Sunday, January 29, 2017 1:07 PM  
**To:** Vanessa Baugh  
**Subject:** Mosaic Rezoning Application

Commissioner Baugh-

Having attended the recent BOC meeting and listened to the pros and cons, I am asking you to vote against the application to rezone. I believe the past record of Mosaic, its inability to be sure about future sink hole issues, and the track record of phosphate companies abandoning properties and leaving clean up to local governments weigh against what I admit was initially a well made case by Mosaic. In fact, I was initially in favor.

If you do decide to go ahead, I would recommend that it be with a stipulation that Mosaic post a bond to cover costs of future reclamation and maintenance, so the County is not the one stuck with the problem down the road. As I said, many of the companies in the past have gone bankrupt, and the fact that Mosaic is solvent today does not insure they will be in ten or twenty years.

Please vote no.

Thank you.



## Bobbi Roy

---

**From:** Marianne Lopata  
**Sent:** Monday, January 30, 2017 11:16 AM  
**To:** 'Jill Salak'  
**Cc:** Bobbi Roy; Debbie Bassett  
**Subject:** RE: Opposition to Mosaic's Master Mining Plan and rezoning request

### Wingate East - Z-14-09 – Mosaic Fertilizer, LLC/Wingate East

Thank you for writing to the Board of County Commissioners to express your concerns regarding this project. I will share your comments with the Commissioners and staff from Building and Development Services and the County Attorney's Office for review.

As a quasi-judicial item commissioners must refrain from prejudging this project outside of the public hearing which was opened on January 26 and continued to Monday, January 30, 2017, at 10 a.m. At that time the commissioners will continue to take public comment and be able to discuss this project publicly.

You are welcome to attend the public hearing to voice your concerns and opinions. On behalf of Chairman Benac and the other Commissioners, thank you for your interest and participation.



**From:** Jill Salak [mailto:jillsalak@gmail.com]  
**Sent:** Sunday, January 29, 2017 9:40 AM  
**To:** Priscilla WhisenantTrace; Charles Smith; Stephen R Jonsson; Robin DiSabatino; Vanessa Baugh; Carol Whitmore; Betsy Benac  
**Subject:** Opposition to Mosaic's Master Mining Plan and rezoning request

Dear County Commissioners,

I oppose Mosaic Company's proposal for approval of its Master Mining Plan and the rezoning of 3,596 acres of its Wingate East Property.

In lieu of attending Monday, 1/30/2017 hearing, I would like this entered into the county commissioners record as my opposition.

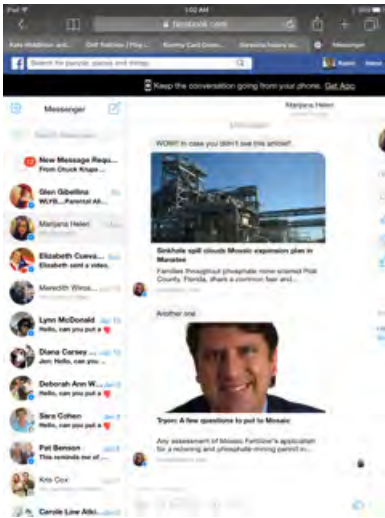
Sincerely,

Jill Salak  
2650 Hyde Park Street  
Sarasota, FL 34239

## Bobbi Roy

---

**From:** Robin DiSabatino  
**Sent:** Saturday, January 28, 2017 1:07 AM  
**To:** Robin DiSabatino; Bobbi Roy; William Clague; Vicki Tessmer  
**Subject:** This was posted on my facebook by Marijana Helen



*Respectfully yours,*

*Robin*

Robin Sue DiSabatino  
Manatee County Commissioner  
District 4  
941-685-5368  
[Robin.disabatino@mymanatee.org](mailto:Robin.disabatino@mymanatee.org)

Working for you and sent from my iPad

## **Bobbi Roy**

---

**From:** Marianne Lopata  
**Sent:** Monday, January 30, 2017 11:15 AM  
**To:** 'Anthony Leibbrook'  
**Cc:** Bobbi Roy; Debbie Bassett  
**Subject:** RE: Mosaic's Co request to rezone

### **Wingate East - Z-14-09 – Mosaic Fertilizer, LLC/Wingate East**

Thank you for writing to the Board of County Commissioners to express your concerns regarding this project. I will share your comments with the Commissioners and staff from Building and Development Services and the County Attorney's Office for review.

As a quasi-judicial item commissioners must refrain from prejudging this project outside of the public hearing which was opened on January 26 and continued to Monday, January 30, 2017, at 10 a.m. At that time the commissioners will continue to take public comment and be able to discuss this project publicly.

You are welcome to attend the public hearing to voice your concerns and opinions. On behalf of Chairman Benac and the other Commissioners, thank you for your interest and participation.



-----Original Message-----

**From:** Anthony Leibbrook [mailto:[aleibbrook@gmail.com](mailto:aleibbrook@gmail.com)]  
**Sent:** Friday, January 27, 2017 8:17 PM  
**To:** Priscilla WhisenantTrace; Charles Smith; Stephen R Jonsson; Robin DiSabatino; Vanessa Baugh; Carol Whitmore; Betsy Benac  
**Cc:** [blackirish2@verizon.net](mailto:blackirish2@verizon.net)  
**Subject:** Mosaic's Co request to rezone

Hello, my name is Anthony Leibbrook. I am a concerned resident of Manatee County. I would like to inform all of the Board of County Commissioners that I strongly oppose Mosaic's Co. request to rezone 3800 acres of land in order to expand their phosphate mining operations in Manatee County.

Phosphate mining produces millions of tons of radioactive waste per year which contaminates air and water. The ecosystems and land are destroyed, which is never returned to its previous state. We all know the wastewater mishap that happened to our neighbor County just North of us. For the best interest of the people of Manatee County, I urge the Board of County Commissioners to vote against Mosaic's rezone request.

Thank you,  
Anthony Leibbrook

## **Bobbi Roy**

---

**From:** Marianne Lopata  
**Sent:** Monday, January 30, 2017 11:15 AM  
**To:** 'Donald Coopes'  
**Cc:** Bobbi Roy; Debbie Bassett  
**Subject:** RE: Mosaic

### **Wingate East - Z-14-09 – Mosaic Fertilizer, LLC/Wingate East**

Thank you for writing to the Board of County Commissioners to express your concerns regarding this project. I will share your comments with the Commissioners and staff from Building and Development Services and the County Attorney's Office for review.

As a quasi-judicial item commissioners must refrain from prejudging this project outside of the public hearing which was opened on January 26 and continued to Monday, January 30, 2017, at 10 a.m. At that time the commissioners will continue to take public comment and be able to discuss this project publicly.

You are welcome to attend the public hearing to voice your concerns and opinions. On behalf of Chairman Benac and the other Commissioners, thank you for your interest and participation.



-----Original Message-----

**From:** Donald Coopes [mailto:donjoco@msn.com]  
**Sent:** Friday, January 27, 2017 3:43 PM  
**To:** Vanessa Baugh  
**Subject:** Mosaic

Please do not allow Mosaic to intrude in Manatee! We want to keep our drinking water clean and keep the land from being destroyed. Look what has already happened! Stand up for the people!!

Sincerely,  
Jo Anne Coopes  
Sent from my iPad

## **Bobbi Roy**

---

**From:** Marianne Lopata  
**Sent:** Monday, January 30, 2017 11:14 AM  
**To:** 'Brooke Adler'  
**Cc:** Bobbi Roy; Debbie Bassett  
**Subject:** RE: Mosaic - vote NO on 1/26/17

### **Wingate East - Z-14-09 – Mosaic Fertilizer, LLC/Wingate East**

Thank you for writing to the Board of County Commissioners to express your concerns regarding this project. I will share your comments with the Commissioners and staff from Building and Development Services and the County Attorney's Office for review.

As a quasi-judicial item commissioners must refrain from prejudging this project outside of the public hearing which was opened on January 26 and continued to Monday, January 30, 2017, at 10 a.m. At that time the commissioners will continue to take public comment and be able to discuss this project publicly.

You are welcome to attend the public hearing to voice your concerns and opinions. On behalf of Chairman Benac and the other Commissioners, thank you for your interest and participation.



**From:** Brooke Adler [mailto:brookeadler@gmail.com]  
**Sent:** Friday, January 27, 2017 2:54 PM  
**To:** Marianne Lopata  
**Cc:** Bobbi Roy; Debbie Bassett; Betsy Benac; Carol Whitmore; Charles Smith; Priscilla WhisenantTrace; Robin DiSabatino; Stephen R Jonsson; Vanessa Baugh  
**Subject:** Re: Mosaic - vote NO on 1/26/17

Good afternoon, Commissioners.

I was delighted to be in attendance for a portion of yesterday's meeting regarding Mosaic's request to rezone certain land. Unfortunately, I was only able to take the morning off of work and, therefore, I missed Thursday's public comment time and I am unable to attend next week's continuation of the hearing. Therefore, in addition to my prior note in opposition to Mosaic's request, I would like to provide you with the remarks that I prepared for Thursday's public comment period:

"I am here today to urge the commission to vote against the request to rezone the 3,595 acres of land to Extraction Zoning District. We should keep the land zoned for General Agriculture. The public benefit to mining operations does not override or outweigh the potential adverse impacts to the quality of the water within the watersheds and wetlands of Lake Manatee and the Peace River. It is incorrect to indicate that a positive attribute of this project, according to the staff report, is that the site is "fairly sparsely populated" thereby "minimizing the number of residents who may be impacted by extraction activities". Although I am not a scientist or engineer, logic tells me that mining activities will impact the watershed, wetlands and, ultimately, residents of Manatee County. Commissioners should be looking for ways to attract and approve progressive and environmentally conscientious development. It is incumbent upon you to NOT be the catalyst to destruction of our beautiful county and its land."

Thank you very much for taking the time to review my message and for your thoughtful deliberation on this very important matter.

Regards,

Brooke Adler

34203

On Wed, Jan 18, 2017 at 12:59 PM, Marianne Lopata <[marianne.lopata@mymanatee.org](mailto:marianne.lopata@mymanatee.org)> wrote:

**Wingate East - Z-14-09 – Mosaic Fertilizer, LLC/Wingate East**

Thank you for writing to the Board of County Commissioners to express your concerns regarding this project. Since your remarks concern an upcoming land use item, I will share your comments with the Board of County Commissioners and staff from Building and Development Services and the County Attorney's Office for review.

As a quasi-judicial item commissioners must refrain from prejudging this project outside of the public hearing on January 26, 2017. At that time the commissioners will take public comment and be able to discuss this project publicly.

You are welcome to attend the public hearing to voice your concerns and opinions. On behalf of Chairman Benac and the other Commissioners, thank you for your interest and participation.

**Marianne Lopata**

Executive Administrative Assistant

Board of County Commissioners

Phone: [\(941\) 745-3707](tel:(941)745-3707); Fax: [\(941\) 745-3790](tel:(941)745-3790)

E-mail: [marianne.lopata@mymanatee.org](mailto:marianne.lopata@mymanatee.org)



**From:** Brooke Adler [mailto:[brookeadler@gmail.com](mailto:brookeadler@gmail.com)]

**Sent:** Wednesday, January 18, 2017 9:31 AM

**To:** Betsy Benac; Carol Whitmore; Robin DiSabatino

**Subject:** Mosaic - vote NO on 1/26/17

Hello. I am writing to inform the Board of County Commissioners who represent me that I **oppose** Mosaic Co.'s request to rezone 3,800 acres of land in order to expand their phosphate mining operations in Manatee County.

Phosphate mining produces millions of tons of radioactive waste per year which contaminates air and water, it also destroys ecosystems and land, which is never returned to its previous and natural state. As a representative of the best interests of the people of Manatee County, I urge the Board of County Commissioners and in particular, my commissioners - Commissioner DiSabatino, Commissioner Whitmore and Commissioner Benac - to **vote against Mosaic's request** on January 26th.

While I plan to attend the meeting on January 26 (and I plan to be there early to beat Mosaic's busloads of people to the meeting), I also plan to call your offices in advance of the meeting to discuss this issue.

Thank you.

Brooke Adler

4710 Garden Arbor Way

Bradenton, FL 34203

[813-625-3827](tel:813-625-3827)

LAW OFFICES OF  
**MCGUIRE & MCGUIRE, P.A.**

---

417 12TH STREET W., SUITE 203  
BRADENTON, FL 34205

HUGH E. MCGUIRE  
HEM@MCGUIREPA.COM  
PHONE 941-713-4950

CAROL A. MCGUIRE  
CAM@MCGUIREPA.COM  
PHONE 941-713-4952

February 8, 2017

Mr. John Barnott  
Director of Building and Development Services  
Manatee County  
1112 Manatee Ave. W.  
Bradenton, Florida 34205

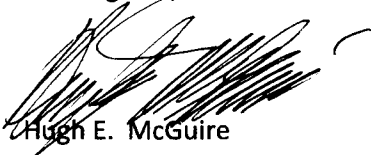
Dear Mr. Barnott,

RE: Mosaic - Wingate East

Mosaic Fertilizer, LLC, is scheduled to present its Rebuttal before the Board of County Commissioners on February 15, 2017. It is our understanding that the Hearing will begin at 9:00 A.M.

As local counsel for Mosaic Fertilizer, LLC., in light of the nine hours of public comment on the recent two days of Hearing, we are requesting one hour for rebuttal rather than the thirty minutes originally requested.

Best regards,



Hugh E. McGuire

Cc: Bobbi Roy