



**MANATEE COUNTY
FLORIDA**

July 25, 2017

Office of Gulf Coast Restoration
1500 Pennsylvania Ave. NW
Washington, DC 20220

ATTN: Laurie McGilvray, Program Director

Enclosed please find Manatee County's initial RESTORE Act Multi Year Implementation Plan.

Following the required 45-day public comment period, Manatee County Board of County Commissioners authorized the submittal of these projects for review and approval by the U.S. Department of the Treasury.

**BOARD OF COUNTY COMMISSIONERS
MANATEE COUNTY, FLORIDA**

**Betsy Benac,
Chairperson**

Enclosures

Cc: Charlie Hunsicker, Director, Parks & Natural Resources

Board of County Commissioners
1112 Manatee Avenue West, Bradenton, FL 34205
www.myanatee.org * Phone: 941.745.3700 * FAX: 941.745.3790

PRISCILLA W. TRACE • CHARLES B. SMITH • STEPHEN R. JONSSON • ROBIN DISABATINO • VANESSA BAUGH • CAROL WHITMORE • BETSY BENAC
District 1 District 2 District 3 District 4 District 5 At Large At Large

Manatee County Invites Feedback on the **RESTORE Act** Direct Component Multi Year Implementation Plan



Robinson Preserve
Restoration



Natural Resources
Workforce Development



Coastal Watershed
Program



Florida Maritime Museum
Facility Enhancement



Gulf Shellfish Institute
Sea Farm to Table

Proposed projects funded by fines from the
Deepwater Horizon Oil Spill

Public Comment Period May 8 - June 21, 2017

www.mymanatee.org/restore

"We owe it to the memory of the eleven lives lost in the Deepwater Horizon oil rig explosion and the untold environmental damages which followed to commit to building a resilient Gulf and understand the connections between a healthy environment and a healthy economy. From the fines and forfeitures of this disaster made available to Manatee County, we propose diverse projects which strengthen our natural resources, improve the quality of our rivers and bays, and enhance appreciation of our coastal fishing economy." - Charlie Hunsicker, Director, Manatee County Parks and Natural Resources Department

RESTORE ACT Direct Component Multiyear Plan Narrative

Department of the Treasury

OMB Approval No. 1505-0250

Directions: Use this form for the Initial Multiyear Plan and any subsequent amendments to an accepted Multiyear Plan. For amendments, include only new and/or materially modified activities.

Multiyear Plan Version (Initial or Amendment Number):	Initial
Date of Initial Multiyear Plan Acceptance:	
Date of Last Multiyear Plan Revision Acceptance:	

Eligible Applicant Name:	Manatee County Government
Name and Contact Information of the Person to be contacted (POG) on matters concerning this Multiyear Implementation Plan:	
POC Name:	Nan Summers
POC Title:	Grants Coordinator
POC Email:	Nan.summers@mymanatee.org
POC Phone:	(941) 742-5923 x6052

NARRATIVE DESCRIPTION:
1. A description of each activity, including the need, purpose, objective(s), milestones and location. Include map showing the location of each activity.
<p>“From the fines and forfeitures of the Deepwater Horizon oil rig explosion made available to Manatee County, we propose diverse projects which strengthen our natural resources, improve the quality of our rivers and bays, and enhance appreciation of our coastal fishing economy”</p> <p>Charlie Hunsicker, Director, Manatee County Parks and Natural Resources Division</p> <p>Of the ten categories of Direct Component project eligibility, Manatee County focused on the following five categories, and selected the project proposal best matched to each category:</p> <p>Category: Restoration and protection of the natural resources, ecosystems, fisheries, marine and wildlife habitats, beaches and coastal wetlands of the Gulf Region. Project: Robinson Preserve Restoration</p> <p>Category: Workforce development and job creation. Project: Natural Resources Workforce Development</p> <p>Category: Coastal flood protection and related infrastructure. Project: Coastal Watershed Program</p> <p>Category: Promotion of tourism in the Gulf Coast Region, including promotion of recreational fishing. Project: Florida Maritime Museum Facility Enhancement</p> <p>Category: Promotion of the consumption of seafood harvested from the Gulf Coast Region. Project: Gulf Shellfish Institute Sea Farm to Table</p> <p>Although the projects have different leaders, organizations, partners, objectives and measurable outcomes, we are working as one integrated team. Our extensive level of coordination, including a dedicated collaboration website, regular in-person meetings and ongoing team updates, will leverage professional expertise and funding sources to achieve the</p>

According to the Paperwork Reduction Act of 1995, no persons are required to respond to a collection of information unless it displays a valid OMB control number. The valid OMB control number for this information collection is 1505-0250. Comments concerning the time required to complete this information collection, including the time to review instructions, search existing data resources, gathering and maintaining the data needed, and completing and reviewing the collection of information, should be directed to the Department of the Treasury, Office of Gulf Coast Restoration, 1500 Pennsylvania Ave., NW, Washington, DC 20220.

greatest possible impact for Manatee County's RESTORE projects. Maps of all the projects are included on the RESTORE website main page and in an interactive format on the RESTORE Public Engagement Portal, which is linked to the webpage.

Project: Robinson Preserve Restoration

Description: Transform 150 acres of fallow farmland previously overtaken by invasive exotic plants, including restoring natural habits with passive use recreational amenities and a state-of-the-art educational facility nestled in a canopy of trees

Need: Robinson Preserve Expansion Phase III completes this multimillion dollar project underway by Manatee County and numerous project partners to transform 150 acres of fallow farmland into a masterwork of environmental stewardship by filling a gap in funding to complete this final phase.

Objective: The project includes restoring desirable native vegetation on the upland habitats with passive-use recreational amenities and a state-of-the-art educational facility nestled in a canopy of mature trees. The expansion will complement the existing trails and amenities, bringing the total size of Robinson Preserve to over 630 acres

Milestones:

Pre-planting Site Preparation: resulting in site prepared for receipt of plants (Estimated 6-24 months from start)

Plant installation (direct seeding and planting) resulting in time zero condition for restored plant diversity (Estimated 6-12 months after #1)

Post-planting habitat establishment period adaptive management resulting in ultra-low maintenance established habitat trending towards restoration goal. (Estimated 24-36 months after #2)

Project: Natural Resources Workforce Development

Description: : Create a pilot workforce development program over five years that delivers each enrollee more than 400 hours of job-relevant classroom training and 3,000 hours of on-the-job training in a variety of disciplines including; fire management, invasive species management, visitor services, and spatial data management

Need: The Natural Resources Workforce Development program is needed to address the critical shortage of applied, competency-based, training programs that develop qualified natural resource management technicians

Objectives:

- 1). To provide a pathway/pipeline for the development of conservation land management technicians who are fully trained and capable of carrying out all tasks and projects associated with natural areas land management.
- 2). Improve Management of Conservation Lands in Manatee County to reduce the risk of wildfire to nearby homes and property and increase ecological function through changes to vegetation structure that will allow affected areas to more fully support the appropriate suite of flora and fauna.

Milestones: Project Years (1-5):

0-3months: 1) Recruit candidates and complete onboarding process ("Ranger 1" classification)

Years (1-5): 2) Implement five-year curriculum including: Natural Areas training Academy, Florida Forest Service/National Wildfire Coordinating Group coursework, Florida Master Naturalist program (432 contact hrs)

3) Rotational Mentorship Training with Parks and Natural Resources Department staff (2,900hrs)

Project: Coastal Watershed Program

Description: Assess improvements needed for fourteen areas of the county developed before drainage systems protected creeks, rivers and bays to meet current standards for floods, drainage and water quality projection

Need: Assess drainage of costal urban areas of Manatee County for long term drainage improvements that were developed early, under old flood and drainage standards and before drainage systems protected the water quality of creeks, rivers and bays.

Objective: Determine long term drainage needs for fourteen older urban coastal areas identified for this program.

Milestones: Projects in three areas are already underway in various stages of completion. Projects are envisioned as a one- or two-year assessment, followed by the construction of drainage system improvements to provide flood, drainage and water quality protection meeting current standards. Projects will be launched at the rate of one or two per year with all fourteen areas completed during the program lifetime.

Project: Florida Maritime Museum Facility Enhancement

Description: Preserve and share the maritime heritage of the Historic fishing Village of Cortex through expanding the capacity of the Folk School program by improving the historic Pillsbury Boat Shop, an auxiliary building and Lake Minnie dock, pump and aeration system.

Need: Expand facility capacity to increase tourism programming for the museum and its Folk School through restoring underutilized historic buildings and site amenities.

Objectives:

- 1) Add a historically compatible shed overhang to the Pillsbury Boat Shop that will be used for boat building, net making and repair, fishing and preparation of equipment and outdoor cooking and improve another auxiliary building on the site.
- 2) Enhance utilization of Minnie Lake for educational programs like fishing and cast netting demonstrations and classes through the addition of a dock and improvements to its pump and aeration systems.

Milestones:

- 1). Complete renovations for all components
- 2). Meet or exceed The Folk School at Florida Maritime Museum 3 year business plan
- 3). Achieve paid class attendance of 300 participants anticipated in 2017
- 4). Track zip codes of participants to analyze and increase ratios of tourists to residents

Project: Gulf Shellfish Institute Sea Farm to Table

Description: Conduct applied research through a planning grant to identify and prioritize key industry issues that increase the production of clams, oysters and scallops, restore local shellfish populations and increase the supply of sustainably produced high quality seafood

Need: Bolster the local economy and improve coastal water quality by solving current obstacles to shellfish farming through applied research and outreach.

Objectives: Increase production of clams, oysters and scallops to protect and enhance our coastal ecosystem; restore local shellfish populations; increase the supply of sustainably-produced, high quality seafood; and create jobs.

Milestones: Prioritization of research will be determined with shellfish industry input and could include any or all of the following specific focuses:

- Red tide monitoring and mitigation
- Identification of water quality issues
- Increasing sunray venus seed production
- Improving restoration techniques for scallops and clams
- Utilization of native clams to offset effects of climate changes
- Investigating the use of native clams to facilitate seagrass growth
- Coordinating regional restoration efforts

2. How the applicant made the multiyear plan available for 45 days for public review and comment, in a manner calculated to obtain broad-based participation from individuals, businesses, Indian tribes, and non-profit organizations, such as through public meetings, presentations in languages other than English, and postings on the Internet. The applicant will need to submit documentation (e.g., a copy of public notices) to demonstrate that it made its multiyear plan available to the public for at least 45 days. In addition, describe how each activity in the multiyear plan was approved after consideration of all meaningful input from the public and submit documentation (e.g., a letter from the applicant's leadership approving submission of the multiyear plan to Treasury or a resolution approving the applicant's multiyear plan).

A public work session with the County Board of Commissioners was held January 31, 2017 to review the proposed projects, process and budgets for RESTORE Funded programs. Media also covered this event.

A press conference was held May 8, 2017 at the Florida Maritime Museum to announce Manatee County's proposed Direct Component spending plan. Team leaders from each project were available to discuss their program with media and public, along with project site tours and program demonstrations. The specially created public RESTORE portal was showcased.

This portal, accessed via a new landing page on the County website, includes overview videos describing the objectives of each project, interactive GIS Storymaps showing locations and proximity of each project, brief surveys and comment boxes for each project, narrative texts, and additional ways for the public to gain more information and to become involved.

Posters publicizing these resources were displayed at all the County libraries and the G.T. Bray Recreational Center, which has experiences traffic up to 500 people per day. Organizations requested live presentations during their meetings, which included ample time for discussion and hard copy surveys and comments.

A social media campaign was created with electronic participation invitations distributed to organizations, who then distributed them to their mailing lists. Combined website analytics reflect more than 72,000 people reached.

3. How each activity included in the applicant's multiyear plan matrix meets all the requirements under the RESTORE Act, including a description of how each activity is eligible for funding based on the geographic location of each activity and how each activity qualifies for at least one of the eligible activities under the RESTORE Act.

Project: Robinson Preserve Restoration

Robinson Preserve Expansion Phase III is an eligible activity because this project consists of habitat restoration with methods based on the best available science. This work consists directly of restoration and protection of the natural resources, ecosystems, wildlife habitats, and coastal wetlands of the Gulf Coast Region. This project is located in Manatee County, Florida being undertaken by Manatee County Government, a direct component eligible applicant

Project: Workforce Development

The Natural Resources Workforce Development project is proposed under the fourth category of eligible activities: "Workforce Development and Job Creation". Manatee County Government, an eligible applicant, is seeking to use funds dispersed under the RESTORE act to address the critical shortage of applied, competency-based, training programs that develop natural resource management technicians.

Project: Coastal Watershed Program

This activity is focused on improving the performance of drainage systems within coastal urban areas of Manatee County and is an eligible activity under the "Coastal Flood Protection and related infrastructure" category.

Project: Florida Maritime Museum Facility Enhancement

The components of the Clerk of Circuit Court's request for the Florida Maritime Museum, meet all the requirements under the Restore Act under the category "Promotion of Tourism in the Gulf Coast Region, Including Promotion of Recreational Fishing". It will directly increase tourism for Manatee County and the Historic Fishing Village of Cortez. The grant funding will be managed by the Clerk of Circuit Court's Historical Resources Department and the Grant Management Department to ensure that all purchasing, hiring and reporting of grant funds are done within Restore Act requirements.

Project: Gulf Shellfish Institute Sea Farm to Table

This project involves several RESTORE Act activities under the category of: "Promotion of the Consumption of Seafood Harvested from the Gulf Coast Region" and will address the following objectives:

1. Result in measurable improvements to local ecosystems
2. Mitigate damage to local shellfish populations
3. Increase workforce development and result in job creation
4. Increase availability and consumption of locally grown seafood

This effort will be focused on the Southwest coast of Florida, an area that contains three estuaries of national importance: Tampa Bay, Sarasota Bay and Charlotte Harbor. Manatee County is centrally located in this region and has an ideal climate and environment for growing local shellfish species that are commercially and ecologically important

4. Criteria the applicant will use to evaluate the success of the activities included in the multiyear plan matrix in helping to restore and protect the Gulf Coast Region impacted by the Deepwater Horizon oil spill.

Project: Robinson Preserve Restoration's Expansion Phase III success will be measured spatially, in acres, of habitat improved from baseline conditions by conducting qualitative monitoring within the work areas. This monitoring is a crucial part of the Habitat Establishment Period Adaptive Management (HEPAM) strategy that will be employed to guide the development of each proposed habitat type towards its restoration goal. The overall restoration goal is to attain a stable "maintenance phase", capable of sustaining the ecological improvements to be gained through this "project phase" investment, using normal habitat maintenance, comparable to that of established habitats. This "maintenance phase" is a condition in which existing County resources are capable of managing baseline threats of invasive species incursion and application of prescribed fire as necessary in pyrogenic habitats.

Project: Workforce Development

Success measures for the Natural Resources Workforce Development include the following:

- 1.) The number of enrollees. We expect to enroll a minimum of nine individuals for the five year program
- 2.) Contact Hours (Classroom-430): The program provides 430 hours of classroom based training.
- 3.) Contact Hours (Mentor-lead apprenticeship-2,930): The program will provide hands on apprenticeship style training in four key areas: 1.) Invasive Plant Control & Habitat Restoration 2.) Rx Fire operations 3.) GPS GIS technology and 4.) Visitor Services

Project: Coastal Watershed Program

Program success will be measured through the annual Storm Water Management Plan assessment required by Manatee County's municipal stormwater system permit (aka NPDES-MS4 permit) and data collected by the Parks and Natural Resources Department monitoring programs.

Project: Florida Maritime Museum Facility Enhancement

The needs of The Folk School at Florida Maritime Museum were identified through a thorough process of preparing a business plan, including classes such as canning, crocheting, quilting, shellcraft, memoir writing and

photograph preservation. Our business plan reflects that The Folk School at Florida Maritime Museum will reach about 300 participants its first year. The Folk School at Florida Maritime Museum will keep records of class attendance and also the home zip code of participants. This will help to determine how many attendees are based locally and how many are visitors to the community contributing to tourism.

Project: Gulf Shellfish Institute Sea Farm to Table

Success of this program will be measured, at a minimum, in the following ways:

1. Water filtering capacity of shellfish added to local waters
2. Increase in abundance of natural populations of shellfish
3. Increase in the number of local businesses and workers producing shellfish
4. Increase in the production and value of shellfish produced locally

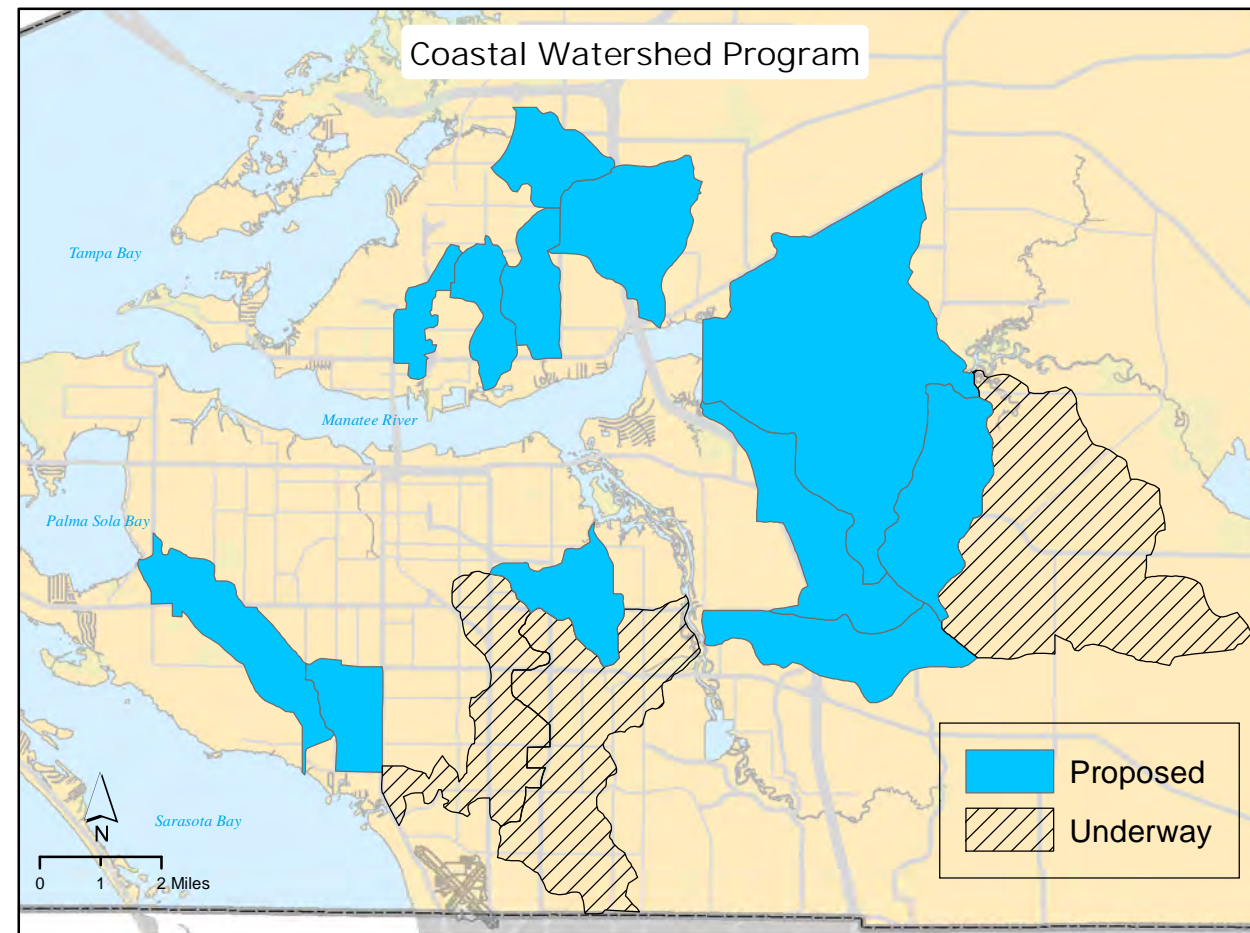
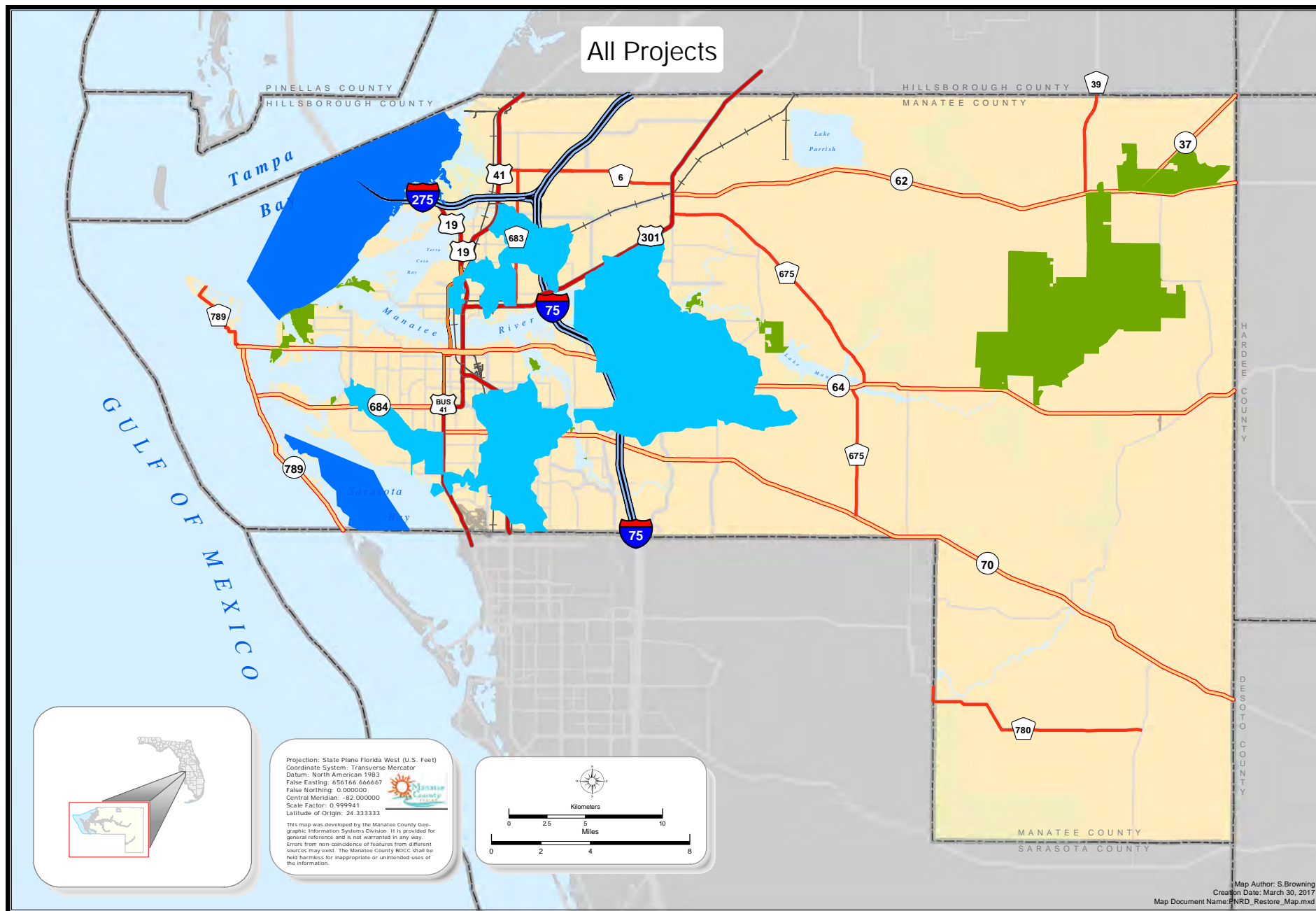
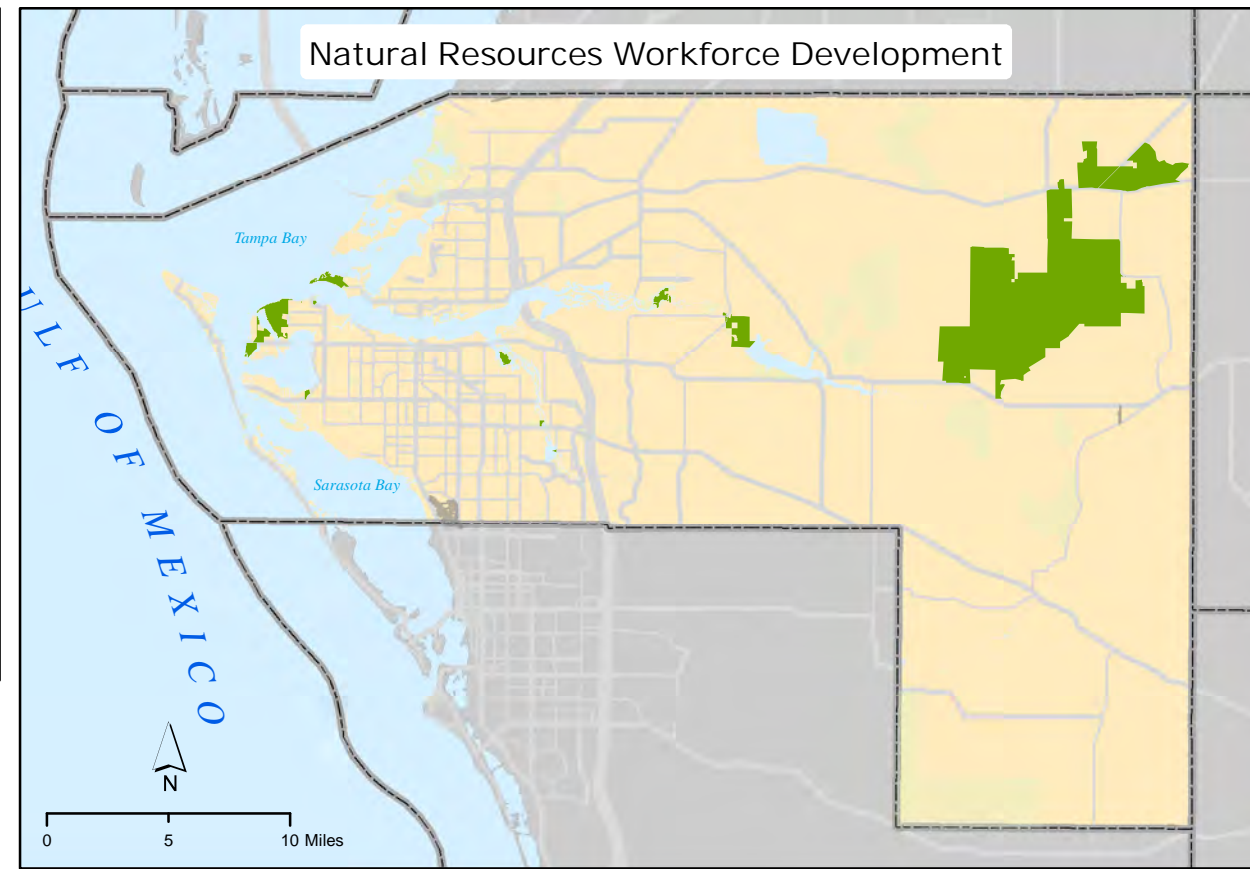
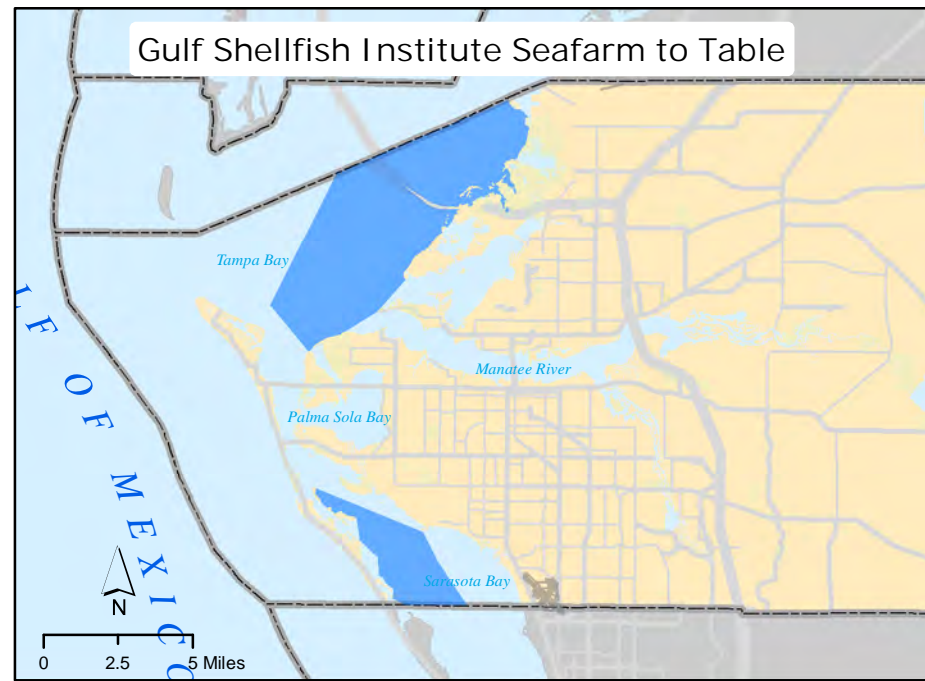
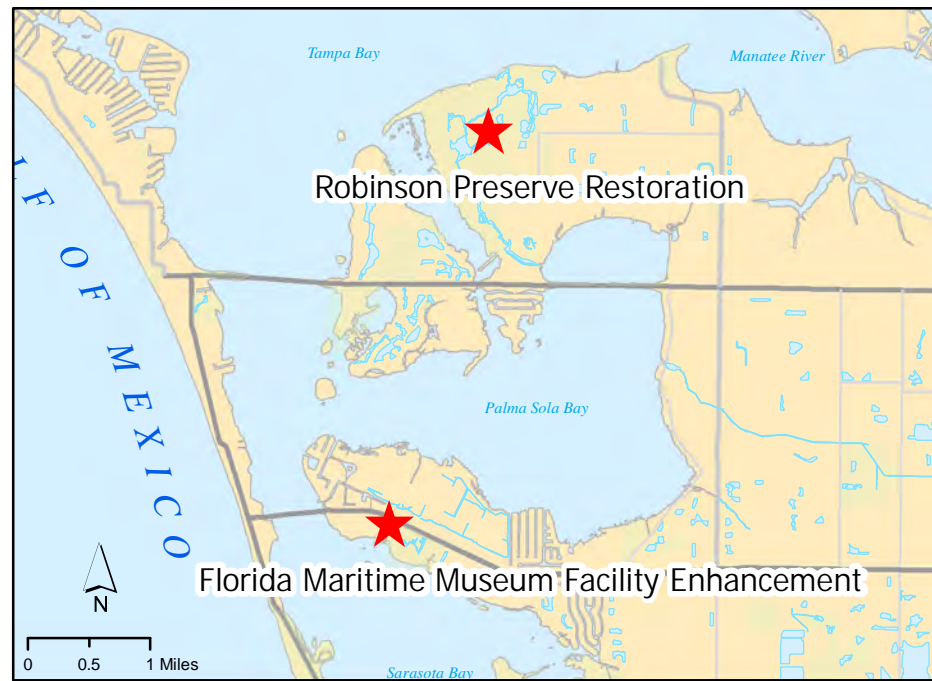
5. How the activities included in the multiyear plan matrix were prioritized and list the criteria used to establish the priorities.

The process for reviewing projects followed a sequential analysis of the following criteria:

- a. Eligibility within the established RESTORE Act project categories. All projects submitted were first screened through this filter, which eliminated several of the original ones proposed.
- b. Project team leadership expertise in relation to the eligible category. The strength of the team's experience and credentials in the category selected was considered in evaluating technical expertise in the subject area.
- c. Existing track record of success in similar projects of scope, completion and impact. The ability of each team to implement projects in a sustained manner was the next factor assessed.
- d. Demonstrated partnering competence and ability to leverage funding resources. Relationships with compatible relevant organizations and partnerships was evaluated, as leveraged funding is a key component in sustained success
- e. Long-term, measurable project impact. Metrics that extend beyond short time frames were considered in order to prioritize projects that would continue to benefit the community over the long term.
- f. Administrative capacity to comply with federal grant requirements. The organizational administrative depth was the final criteria for selection to ensure that each project would be able to successfully complete any audits that would be conducted.

6. If applicable, describe the amount and current status of funding from other sources (e.g., other RESTORE Act contribution, other third party contribution) and provide a description of the specific portion of the project to be funded by the RESTORE Act Direct Component.

Project: Robinson Preserve Restoration's total estimated cost for ecological improvements (not including property acquisition, or human amenities such as trails, restrooms, and nature center) for all phases of the Robinson Preserve Project is \$5,712,219.60. Most of this was re-grading the damaged former agricultural fields to create valuable coastal saltwater habitats and prepare uplands for future restoration (Phase II and IIB). The total estimated need in funding for Robinson Preserve Phase III is 1,187,300.00 as of March 9, 2017. Based on current estimates for Phase IIB and the funding that dedicated from other funding partners the estimated need is \$600,000 for successful completion of the Robinson Preserve Expansion Project. Anticipated funding for Phase III is through an existing signed agreement with the Southwest Florida Water Management District's Cooperative Funding Initiative (assuming costs for Phase IIB construction are at budget estimates) at \$257,000 and a dedicated amount of \$271,000 through the Environmental Protection Agency being distributed through the Tampa Bay Estuary Program (Pot 2).



**Manatee County
Direct Component Projects**

RESTORE ACT Direct Component Multiyear Plan Matrix — Department of the Treasury OMB Approval No. 1505-0250

Applicant Name: Manatee County

1. MULTIYEAR PLAN VERSION (INITIAL OR AMENDMENT NUMBER): Initial **2a. DATE OF INITIAL MULTIYEAR PLAN ACCEPTANCE (mm/dd/yyyy):** N/A **2b. DATE OF LAST MULTIYEAR PLAN ACCEPTANCE:**

3. CUMULATIVE DIRECT COMPONENT ALLOCATION AVAILABLE FOR DISTRIBUTION TO APPLICANT: \$1,461,290.73 **4. TOTAL ALLOCATIONS PLUS KNOWN FUNDS NOT YET DEPOSITED IN TRUST FUND FOR DIRECT COMPONENT:** \$6,332,362.00

5. Primary Direct Component Eligible Activity Further Described in Application (Static Field)	6. Activity Title (Static Field)	7. Location (Static Field)	8. Estimated Total Funding Contributions For Proposed Activity(ies)(refer to Instructions)				9. Proposed Start Date mm/dd/yyyy	10. Proposed End Date mm/dd/yyyy	11. Status (refer to Instructions)
			8a. Direct Component Contribution	8b. Other RESTORE Act Contribution	8c. Other Third Party Contribution	8d. Total Contribution			
Restoration and protection of the natural resources, ecosystems, fisheries, marine and wildlife habitats, beaches, and coastal wetlands of the Gulf Coast Region	Robinson Preserve Expansion Phase III	Robinson Preserve	\$600,000.00	\$2,061,546.00	\$162,600.00	\$2,824,146.00	01-2018	12-2022	
Workforce development and job creation	Natural Resources Workforce Development	Various: County-wide Preserve Sytem (27,000 acres). See attached map.	\$619,758.00			\$619,758.00	10-2018	09-2023	
Coastal flood protection and related infrastructure	Coastal Watershed Program	Coastal tributary watersheds of Manatee County. See attached map.	\$620,309.00			\$620,309.00	12-2017	11-2022	
Promotion of tourism in the Gulf Coast Region, including recreational fishing	Florida Maritime Museum Facility Enhancement	Cortez, Florida	\$225,000.00			\$225,000.00	12-2017	11-2018	
Promotion of the consumption of seafood harvested from the Gulf Coast Region	Sea Farm to Table	Coastal waters of Manatee County. See attachd map.	\$100,000.00			\$100,000.00	12-2017	11-2018	
						\$0.00			
						\$0.00			
	12. ESTIMATED TOTAL FUNDING CONTRIBUTIONS FOR ACTIVITY(IES) (refer to Instructions)		\$2,165,067.00	\$2,061,546.00	\$162,600.00	\$4,389,213.00	Please note: Grant awards may reflect non-material changes in proposed dates and estimated funding.		

According to the Paperwork Reduction Act of 1995, no persons are required to respond to a collection of information unless it displays a valid OMB control number. The valid OMB control number for this information collection is 1505-0250. Comments concerning the time required to complete this information collection, including the time to review instructions, search existing data resources, gathering and maintaining the data needed, and completing and reviewing the collection of information, should be directed to the Department of the Treasury, Office of Gulf Coast Restoration, 1500 Pennsylvania Ave., NW, Washington, DC 20220.

July 25, 2017 - Regular Meeting
Agenda Item #58

Approved in Open Session 7/25/17,
Manatee County
Board of County Commissioners

Subject

RESTORE Act - Manatee County Direct Component Multi Year Implementation Plan

Briefings

None

Contact and/or Presenter Information

Nan Summers, Grants Coordinator, x6052

Charlie Hunsicker, Director, x6001

Action Requested

Authorize Chairman to sign the transmittal letter conveying the Manatee County Direct Component Multi Year Implementation Plan for local expenditures under the RESTORE Act.

Enabling/Regulating Authority

Federal RESTORE Act

Background Discussion

Manatee County has been allocated \$6.3 million for Direct Component funds over fifteen years.

The U.S. Department of the Treasury requires proposed plans to be submitted in 5-year increments.

A slate of projects proposed for the first portion of funding was presented to the Board during a public work session held January 31, 2017. Direction to staff at the work session was to proceed developing public engagement presentations for those projects.

The required 45 day comment period has been successfully completed. This meeting will share those results and request Board approval to submit the plan to the U.S. Department of the Treasury. The projects are:

1. Robinson Preserve Restoration: Transform 150 acres of fallow farmland previously overtaken by invasive exotic plants into a masterpiece of environmental stewardship, including restoring natural habitats with passive use recreational amenities and a state-of-the-art educational facility nestled in a canopy of trees.
2. Natural Resources Workforce Development: Create a pilot workforce development program over five

years that delivers each enrollee more than 400 hours of job-relevant classroom training and 3,000 hours of on-the-job training in a variety of disciplines including: fire management, invasive species management, visitor services, and spatial data management.

3. Coastal Watershed Program: Assess improvements needed for fourteen areas of the county developed before drainage systems protected creeks, rivers and bays to meet current standards for floods, drainage and water quality projection.
4. Florida Maritime Museum Facility Enhancement: Preserve and share the maritime heritage of the Historic Fishing Village of Cortez through expanding the capacity of the Folk School program by improving the historic Pillsbury Boat Shop, an auxiliary building and Lake Minnie dock, pump and aeration system.
5. Gulf Shellfish Institute Sea Farm to Table: Conduct applied research through a planning grant to identify and prioritize key industry issues that increase the production of clams, oysters, and scallops, restore local shellfish populations, and increase the supply of sustainably produced high quality seafood.

Public engagement included a wide range of vehicles, beginning with a press conference featuring live demonstrations that was extensively covered by print, electronic, and broadcast media outlets. A new website was created with interactive maps, project descriptions, surveys, and comment options. Six videos were produced and shared on the website, social media, and to groups during live presentations.

Comments were overwhelmingly positive and total people reached exceeded 72,000.

Next steps: Upon approval, this initial slate of projects will be submitted to the Department of the Treasury. Upon its approval, each project will be submitted separately with a detailed description and will receive an individual notice of award when it passes rigorous review.

County Attorney Review

Not Reviewed (No apparent legal issues)

Explanation of Other

Reviewing Attorney

N/A

Instructions to Board Records

Return letter to Nan Summers in Parks & Natural Resources Department.

Letter sent by courier to Nan Summers, PNRD, for transmittal to Gulfcoast Restoration. 7/28/17, RT

Cost and Funds Source Account Number and Name

0010012800

Amount and Frequency of Recurring Costs

0.00

Attachment: [Letter.pdf](#)

Attachment: [Narrative.pdf](#)

Attachment: [Map.pdf](#)

Attachment: [Matrix.pdf](#)