

4

---

---

---

---

---

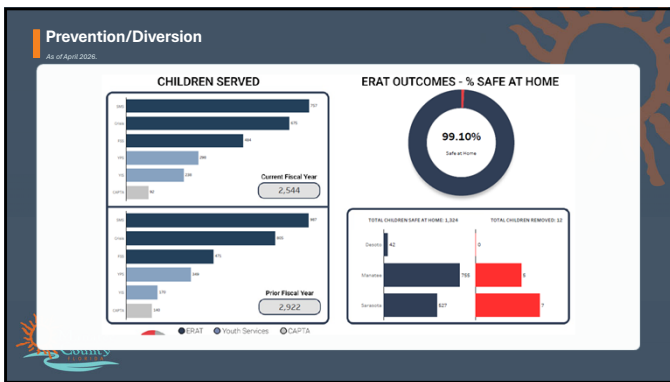
---

---

---

---

---



5

---

---

---

---

---

---

---

---

---

---



6

---

---

---

---

---

---

---

---

---

---







### FSA Priorities

Community priorities across prevention, intervention, and treatment.

**PRIORITY AREAS**

- High-Fidelity Wraparound (HFV)
- Early behavioral health screening and consultation
- Community Care for Families
- Peer support
- Safety planning
- Place-based strategies
- Youth Healthcare Court (YHCC)
- Plans of Safe Care (POSC)



These priorities reflect a shared system-change agenda: earlier support, stronger engagement, and better coordinated responses for families.

The common thread is building capacity before crises become removals, placements, or deeper system involvement.

16

---

---

---

---

---

---

---



---

---

---

### “Lockouts” and High-Acuity Youth

A practical indicator of unmet behavioral health, placement, and family support needs.

	January 2026	February 2026	March 2026
CSST Referrals	0	0	0
Critical / LRT Staffings	10	14	22
Youth at Risk Staffings	0	3	0

- **103 Children Staffed (Jul-May)**
  - 8 Children Sheltered
- Youngest youth staffed: **Age 8**
- Most frequent ages: **15 & 16**
- High Acuity Behavioral Issues: **91 Children (55%)**
- Behavior need types reported:
  - Severe MH **40**
  - Dev. Disability **13**
  - Substance Use **8**
  - Sexual Behavior **1**
  - Homelessness **2**

17

---

---

---

---

---

---

---

---

---

---

### Potential Solutions for Future Consideration

Options to strengthen prevention, engagement, and high-acuity youth supports.

**POTENTIAL SOLUTIONS**

- HFV Team
- Early Childhood Behavioral Health Consultation
- SafeSteps Initiative
- Behavioral health screenings
- Peer support expansion
- Family Resource Center / drop-in centers
- Natural supports
- Increase targeted EBPs such as FFT

Which investments would most directly reduce crisis entry points and strengthen family stability?

18

---

---

---

---

---

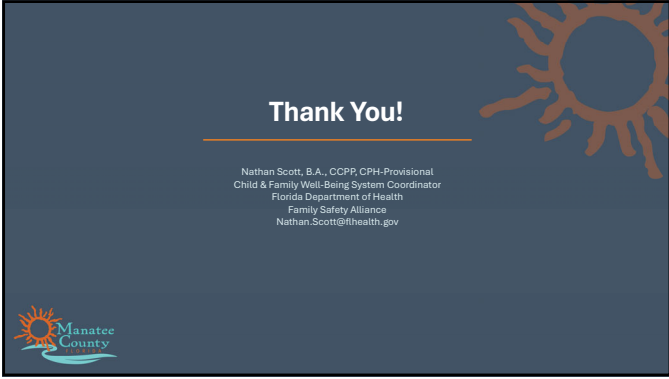
---

---

---

---

---



---

---

---

---

---

---

---

---