

Manatee County Planning Commission December 13, 2007



Water Supply Facilities Work Plan

Plan Objective

- **Ensure Necessary Water Supply Facilities are Planned to Serve Customers for 10-Year Planning Period**
 - **Project County's Demands for 10-Year Period**
 - **Identify Required Water Sources & Facilities**
 - **Identify Water Conservation and Reclaimed Water Programs**
 - **Develop 10-Year Work Plan for needed Facilities**
 - **Develop 5-Year Schedule of Capital Improvements**

Current and Projected Water Demands

- **Current Demand – 45.5 MGD (2006)**
- **Projected 2030 demand – 61.9 MGD**
- **Current Permitted Supply – 52.85 MGD, includes East County Wellfield Expansion**
- **New Supply/Treatment Facility Required by 2014**
- **Total New Supplies Required through 2030 – Approximately 9.1 MGD**

CURRENT SOURCES AND PERMITTED CAPACITY

PRIMARY SOURCES

■ LAKE MANATEE	34.90 MGD
■ EAST COUNTY WELLFIELD	15.99 MGD
■ MOSIAC WELLFIELD	<u>1.96 MGD</u>
■ TOTAL PERMITTED	52.85 MGD

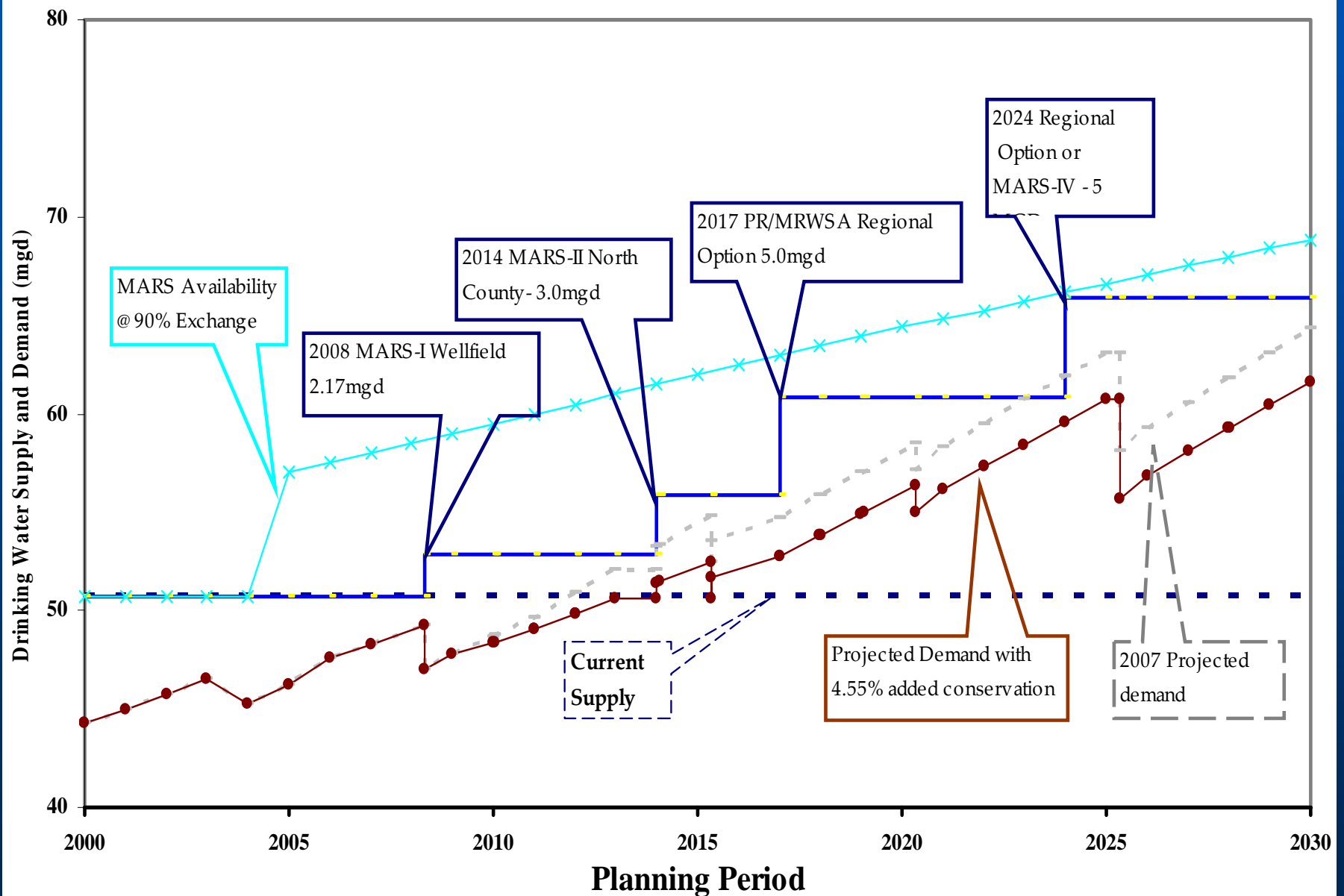
EMERGENCY SOURCES

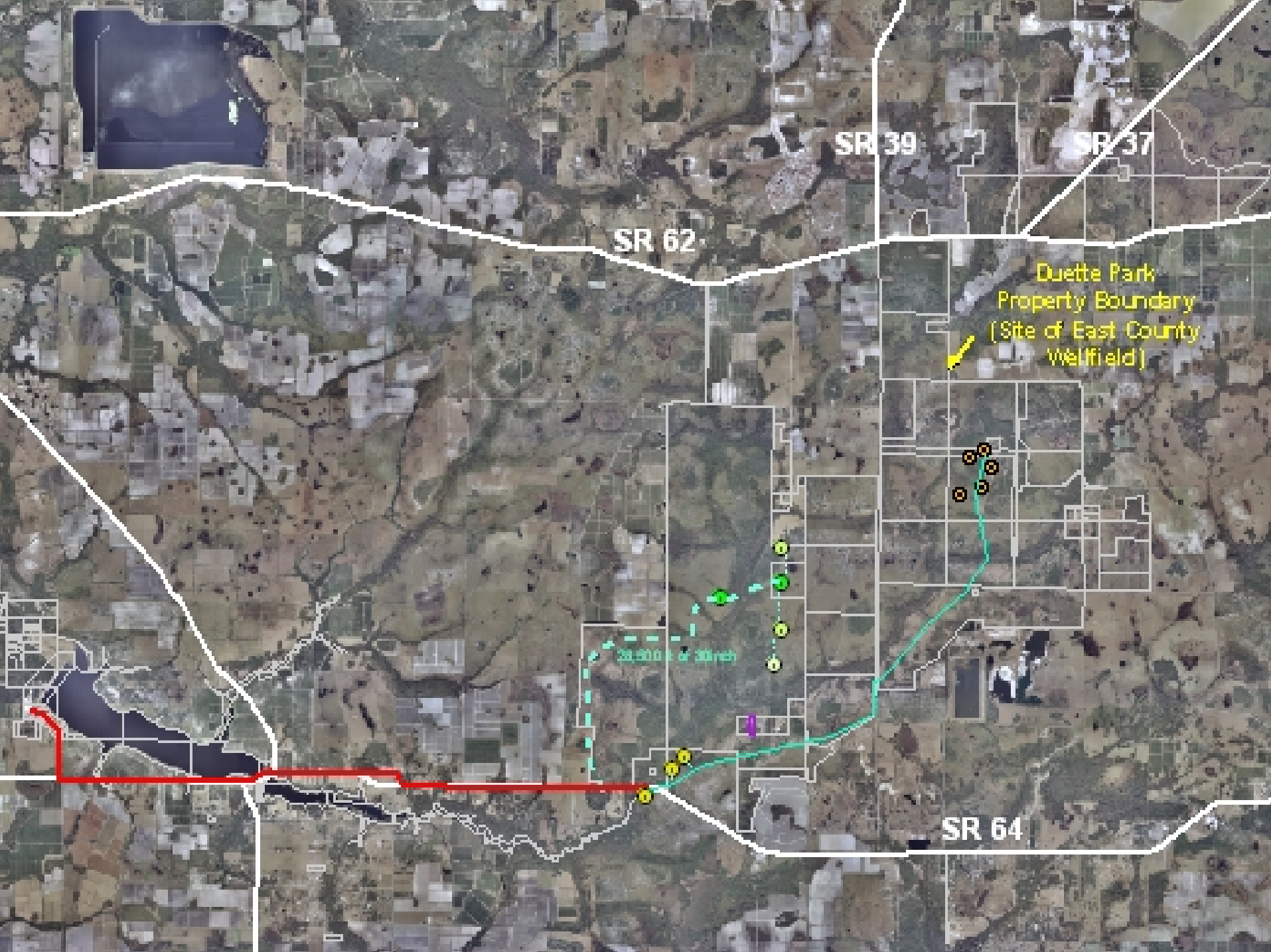
■ MOSIAC WELLFIELD	(16.00 MGD)
■ ASR @ LAKE MANATEE	(10.00 MGD)
■ BRADENTON & SARASOTA	(4.00 MGD)

Recommendations

- New Potable Water Supply Sources
 - *2008 – MARS-I (East County Wellfield Expansion)*
 - *2014 – MARS-II (Erie Road Water Treatment Plant)*
 - *2017 – Regional Option (PR/MRWSA)*
 - *2024 – Regional Option or MARS-IV*

Proposed Water Supply and Projected Demand





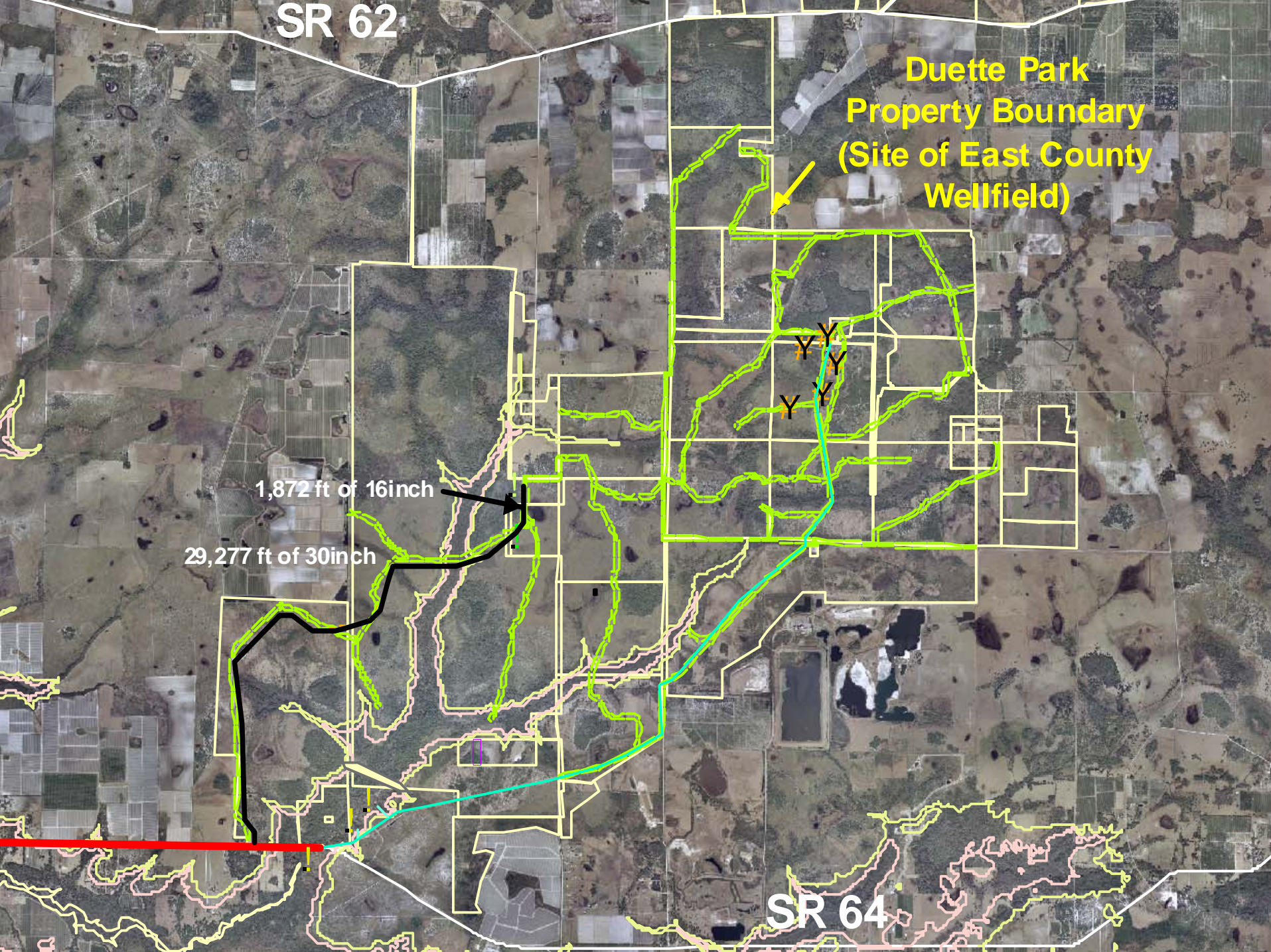
SR 62

Duette Park
Property Boundary
(Site of East County
Wellfield)

1,872 ft of 16inch

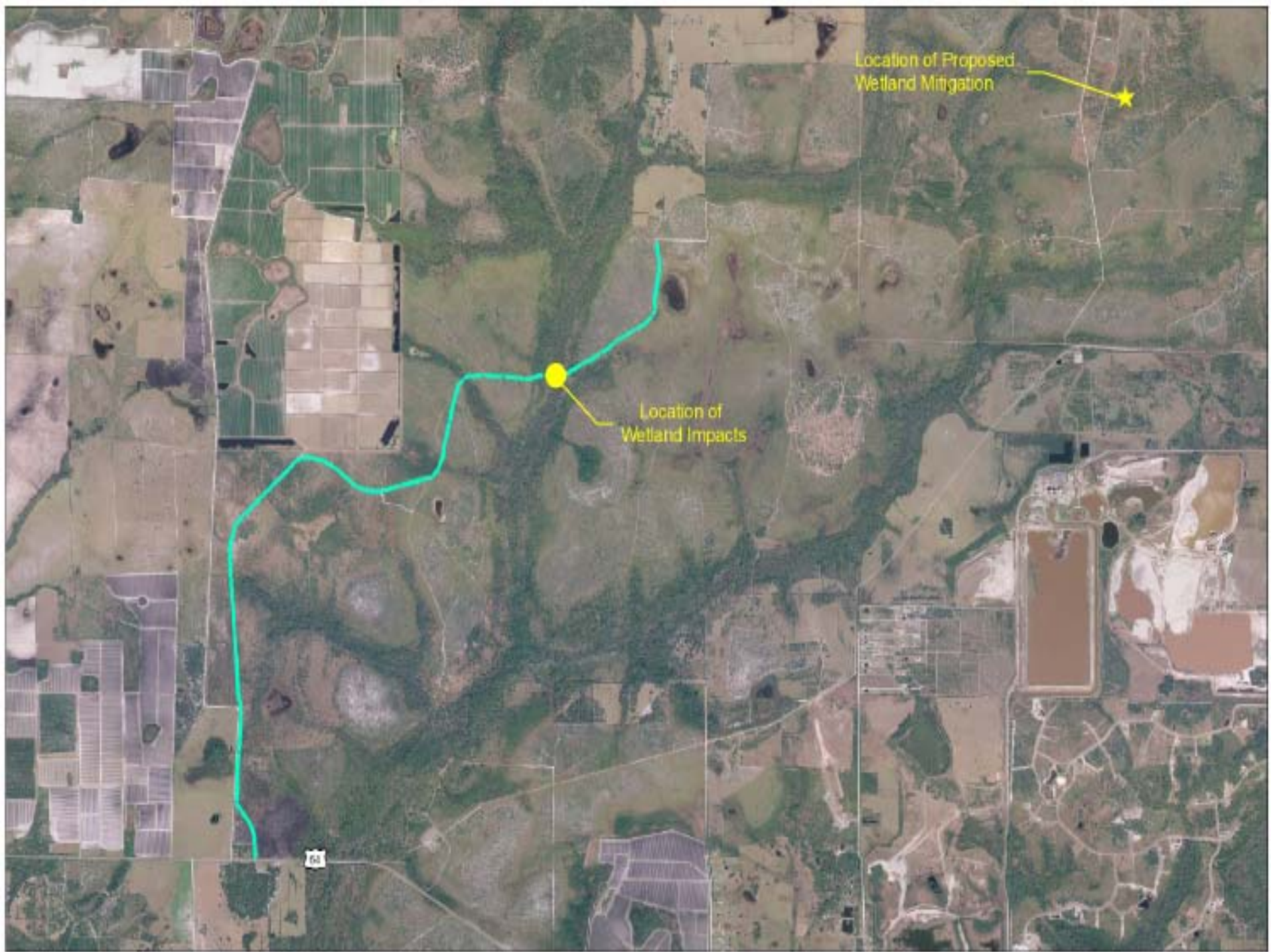
29,277 ft of 30inch

SR 64



1000





Location of Proposed
Wetland Mitigation

Location of
Wetland Impacts

64

Power Line Route

