
Historic Preservation Forum

coming to Manatee County

Join other local historic preservation enthusiasts for

FREE Workshops - Exhibits - Tours

Reserve the date:

Thursday, February 12, 2004

8:30 a.m. - 4:30 p.m.

Manatee Convention & Civic Center

Morning Concurrent Sessions:

Resource Coordination:
Lobbying & Grant Writing

Community Involvement:
Volunteer Recruitment & Retention

Lunch & Networking:

Crosley Estate - \$8.00 lunch fee

Afternoon Tours:

Cortez 1912 Schoolhouse
(learn building restoration techniques)

OR

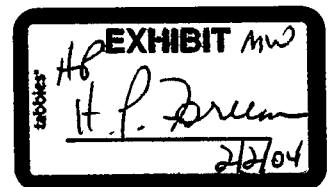
Family Heritage House at MCC
(learn paper conservation techniques)

To reserve free exhibit space for your organization at the Crosley, or
to obtain additional information, please contact:

Kathy McCaslin - (941) 749-3070
kathy.mccaslin@co.manatee.fl.us

Sponsored by:

Manatee County Government
Manatee County Clerk of the Circuit Court
Manatee County Community Development Block Grant Program



HP20040202DQC002

Historic Preservation Forum

Manatee County

Thursday, February 12th, 2004

AGENDA

- 8:30 - 9:00 a.m. Coffee & Danish
- 8:45 a.m. Welcome
- 9:00 - 9:30 a.m. Overview: Historical Treasures of Manatee County
(Cathy Slusser)
- 9:45 - 11:15 a.m. Concurrent Sessions:
- A. Resource Coordination: Lobbying & Grant
 Writing *(Amy Merrill)*
 - B. Community Involvement: Volunteer Recruitment
 & Retention
- 11:30 a.m. Leave Civic Center for Crosley Estate
- Noon - 1:30 p.m. Lunch at Crosley Estate, Networking, Visit Displays
- 1:30 - 2:00 p.m. Travel to Afternoon Sessions
- 2:00 - 3:30 p.m. Afternoon Workshops
- Cortez 1912 Schoolhouse: Building Restoration
 Techniques *(Walter Marder)*
 - Family Heritage House at MCC: Paper
 Conservation Techniques *(Dolly Blunt)*
- 4:00 p.m. Return to Civic Center

Sponsored by:

**Manatee County Government
Manatee County Clerk of the Circuit Court
Manatee County Community Development Block Grant Program**

MANATEE COUNTY
HISTORIC PRESERVATION FORUM
Thursday, February 12, 2004
Reservation form

(Please mail, fax or e-mail your response as soon as possible)

Name _____

Organization (if applicable) _____

Mailing address _____

Phone _____ Fax _____

E-mail _____

Lunch & Networking

Will you be joining us for lunch YES NO

Lunch at the Crosley (\$8.00 per person payable at the door)

Which Afternoon Tour do you wish to attend?

(Please circle one)

Cortez 1912 Schoolhouse OR Family Heritage House at MCC
(learn building restoration techniques) (learn paper conservation techniques)

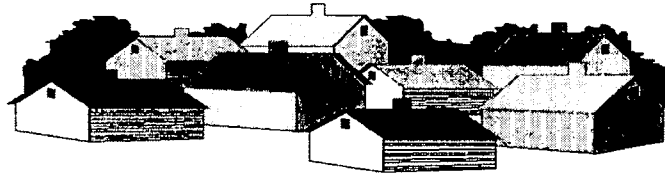
Please mail, fax or e-mail your response as soon as possible

Kathy McCaslin - (941) 749-3070/ Fax - (941) 708-6154

kathy.mccaslin@co.manatee.fl.us

To reserve free exhibit space for your organization at the Crosley, or to obtain additional information, please contact Kathy.

DOES YOUR NEIGHBORHOOD NEED A LITTLE ENHANCING?



The Manatee County
Neighborhood Enhancement Grant Program
may be able to help!

**Wetland
Protection**



HOW MUCH IS AVAILABLE?
*Maximum grant amount is
\$2,500 per neighborhood*

APPLICATION DEADLINE
May 5th, 2004



**Bike Path
Connections**

To learn about this exciting program,
check out the web site www.co.manatee.fl.us.

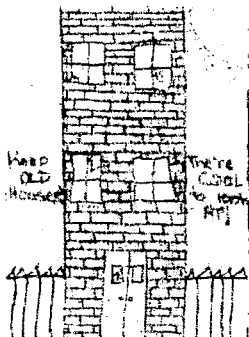
(click on "planning", click on "neighborhoods",
scroll down to "Neighborhood Enhancement Grant Program")

or contact

Manatee County Planning Department
(941) 749-3070

Kathleen Thompson or Troy Salisbury
kathleen.thompson@co.manatee.fl.us
troy.salisbury@co.manatee.fl.us

**Historic
Preservation/
Interpretation**



**Neighborhood
Identification Signs**

**Low Water Use
Entrance
Landscaping**



MANATEE



FOR A GREATER FUTURE

FOR A GREATER
BETTER
ACHIEVABLE
SUSTAINABLE
PROSPEROUS
COLLABORATIVE
HESPERIA COUNTY

IMAGINE YOUR FUTURE – IMAGINE MANATEE!

FOR A GREEN COUNTY

Green County

Manatee County will be known as a green county through actions and ethic.

Key Elements

- Active and passive parks.
- Aggressive acquisition program for environmentally sensitive lands.
- Multi-use trails system.
- Strategically direct growth.
- Strong environmental regulations.
- Environmental education in public schools.

Key Actions

- Establish funding source(s) for parks, trails and environmentally sensitive lands.
- Establish specific plan to manage growth east of I-75.
- Establish policies and incentives to direct development toward already urbanized areas.
- Develop Parks Master Plan, which includes Manatee County, Bradenton and Palmetto.
- Review and amend county and municipal codes as appropriate to ensure environmental protection.
- Expand opportunities for environmental education for all citizens.



FOR A **BEAUTIFUL** COUNTY

Beautiful County

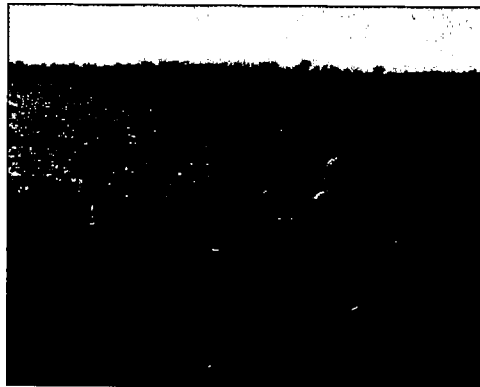
Manatee County will be a beautiful place.

Key Elements

- Favor redevelopment and infill development.
- Rehabilitation of older neighborhoods, commercial sites and industrial areas.
- Clustering new development into well-designed, distinct neighborhoods and communities with walkable mixed-use centers.
- Aggressive improvement and beautification of weak areas of the community.
- Protection of historic buildings and districts.

Key Actions

- Amend county and municipal plans and codes to provide incentives to favor redevelopment, infill development, rehabilitation and renovation.
- Establish tax credits and other funding methods to encourage historic preservation.
- Aggressively continue and expand programs that improve the weak areas of the community
- Develop a comprehensive recreational and cultural plan.



FOR AN **ACCESSIBLE** COUNTY

Accessible County

Manatee County will have a multi-modal transportation system maximizing accessibility while minimizing congestion.

Key Elements

- Offer greater choices in modes and methods of transportation.
- Fully integrated system with the regional transportation network.
- A convenient, reliable and safe public transportation system.
- An extensive network of sidewalks and bike facilities to complement public transportation.

Key Actions

- Establish a Transportation Task Force to assess needs and assist in planning and implementing appropriate changes, particularly in the area of public transportation.
- Develop a Transportation Master Plan, which includes the implementation of intelligent transportation system technology.
- Amend plans and codes of the county, municipalities and the Metropolitan Planning Organization consistent with the goal.
- Evaluate all current and potential funding sources to implement the Transportation Master Plan.
- Establish sidewalks and bike paths along all major roads and around schools.



FOR A **COLLABORATIVE** COUNTY

Collaborative County

Manatee County will be a place where residents and governments proactively communicate and share decisions.

Key Elements

- Involved and informed citizens.
- Open government.
- Increased level of cooperation among governments.
- Increased efficiency and elimination of duplication in the delivery of services.

Key Actions

- County and local municipalities should step up efforts to improve cooperation and coordination among government entities and address consolidation of service delivery, such as law enforcement, fire and medical response.
- Expand outreach methods and frequency to inform and involve the general public in developing and implementing future programs, policies and actions.
- Develop citizen based neighborhood plans, which identify the desires of the community.



FOR AN **EDUCATED** COUNTY

Educated County

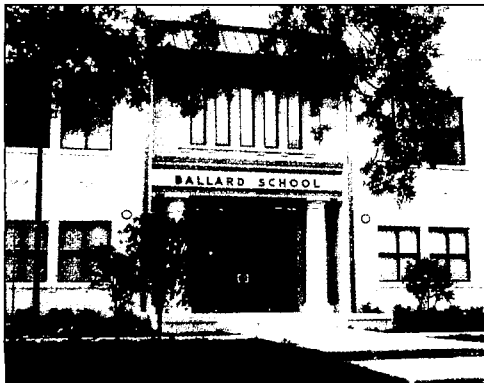
Manatee County will have a school system known for excellence and efficiency.

Key Elements

- Technologically advanced education and vocational training.
- Focus on student achievement.
- Well funded.
- Schools as community focal points.

Key Actions

- Develop methods to allow collaborative community input on how to increase the quality of education, system efficiency and to identify, seek and lobby for additional funds.
- Develop greater awareness in the general public of school needs and programs.
- Develop and operate schools as full time community centers.
- Implement one-on-one cross-generational mentoring.



FOR AN **EQUITABLE** COUNTY

Equitable County

Manatee County will be a fair and just community.

Key Elements

- Diverse populations living in harmony in well maintained, diverse neighborhoods.
- Aggressive affordable housing program.
- Accessible, easily identified social services for those in need.
- Efficient and well-coordinated network of social services.
- A thriving arts community.

Key Actions

- Establish an Affordable Housing Task Force to seek new ways to stimulate the development of affordable housing.
- Establish a Social Services Coordinating Council to increase opportunities for collaboration and efficiency in the delivery of services.
- Increase police patrols (car, bike, and foot) to reduce crime.
- Establish neighborhood based citizen organizations to communicate community needs to elected officials.
- Establish and expand programs aimed at improving the physical appearance of the existing community and new development.
- Development of facilities, events and funding to support the arts.



FOR A PROSPEROUS COUNTY

Prosperous County

Manatee County will have a thriving, diverse economy.

Key Elements

- Attractive, vibrant, economically sustainable downtowns throughout the County.
- Focus on downtown waterfronts of Bradenton and Palmetto.
- A skilled workforce.
- Employment for residents at all skill levels.
- Creation of value added jobs.

Key Actions

- Coordinate revitalization efforts of the downtown waterfronts.
- Create and/or update plans to encourage mixed-use development and round-the-clock activities for the downtowns.
- Create a downtown waterfront task force to develop a comprehensive waterfront strategy aimed at maximizing the downtown waterfront economic and recreational potential.
- Increase partnerships between business, government, schools and local colleges to provide workforce education and training consistent with changing needs.
- Continue successful business recruiting programs that bring high-skill, high-wage jobs.



IMAGINE YOUR **FUTURE**

The Vision Process

"What can we do to make Manatee County the best that it can be in the coming years?" This question was posed to over 700 participants during the 13 public brainstorming meetings held throughout the county during January and February of 2003. They responded with over 2,550 ideas. These ideas were distilled into 19 goals and 105 strategies providing a dynamic road map for the future of Manatee County.

Participation in Imagine Manatee was very broad. Many residents who had never been involved in something of this nature found an opportunity to express their hopes, expectations and concerns about the future, thereby providing the foundation upon which the Vision is built.

The Vision process for Manatee County is the result of three complementary programmatic features:

1. *Brainstorming ideas for the future,*
2. *A focus on the physical environment, and*
3. *Understanding existing conditions.*

The ideas were generated at public brainstorming meetings and then refined into goals and strategies in follow up public meetings to provide a clear description of the desired future physical and social character of the County.

The physical development of the County received focused attention during a stakeholder workshop, which examined potential future land consumption and growth patterns. Additionally, during the brainstorming meetings attendees participated in an activity (Strong Places / Weak Places) designed to assess what works and what needs improvement in regards to the physical environment. This activity allowed participants to identify why they considered places weak and strong, and then encouraged them to identify methods to improve the weak. The principles developed as a result of these activities provide a snapshot of the desired physical form and appearance of the County.

IMAGINE YOUR FUTURE

The Vision Process

“What can we do to make Manatee County the best that it can be in the coming years?” This question was posed to over 700 participants during the 13 public brainstorming meetings held throughout the county during January and February of 2003. They responded with over 2,550 ideas. These ideas were distilled into 19 goals and 105 strategies providing a dynamic road map for the future of Manatee County.

Participation in Imagine Manatee was very broad. Many residents who had never been involved in something of this nature found an opportunity to express their hopes, expectations and concerns about the future, thereby providing the foundation upon which the Vision is built.

The Vision process for Manatee County is the result of three complementary programmatic features:

1. *Brainstorming ideas for the future,*
2. *A focus on the physical environment, and*
3. *Understanding existing conditions.*

The ideas were generated at public brainstorming meetings and then refined into goals and strategies in follow up public meetings to provide a clear description of the desired future physical and social character of the County.

The physical development of the County received focused attention during a stakeholder workshop, which examined potential future land consumption and growth patterns. Additionally, during the brainstorming meetings attendees participated in an activity (Strong Places / Weak Places) designed to assess what works and what needs improvement in regards to the physical environment. This activity allowed participants to identify why they considered places weak and strong, and then encouraged them to identify methods to improve the weak. The principles developed as a result of these activities provide a snapshot of the desired physical form and appearance of the County.

Steering Committee

Willie Mae Jackson

Rick Fawley

Co-Chairs

Mark Barnebey

Joan Blackford-Heintz

Fred Booth

Beverly Burdette

Patrick Carnegie

Clint Chapman

Karen Ciemniecki

Jim Delgado

Susan Donaldson

James Dunne

Nancy Engel

Lou Eurice

Karen Fraley

Greg Geraldson

E.D. "Moody" Johnson

Remonia Lewis

Steve Lezman

Norma Lloyd

John MacDonald

Tim Martin

Anne Melton

Ginki Miller

Jim Pauley

Ann Peabody

Will Robinson

Berniece Scott

David Sessions

Bruce Shackelford

Garrett Shinn

Bob Spencer

Edward Stanley

Linda Stevenson

Karen Stewart

Arlene Sweeting

Jean Van Delft

Wendy Vehling

Timothy Vining

Dale Weidemiller

Britton Williams

Imagine Manatee – A Vision for Manatee County is a citizen driven vision program. The Vision summarized in this report embodies the ideas gained through a carefully crafted 7 month public involvement program. Led by a Citizen Steering Committee, county residents were the participants and critical decision makers in all phases of the vision process.

Imagine Manatee was initiated by all the local governments within Manatee County and included all the lands within the County.

City of Anna Maria

City of Bradenton

City of Bradenton Beach

City of Holmes Beach

City of Palmetto

Town of Longboat Key

Manatee County

IMAGINE YOUR FUTURE!

IMAGINE MANATEE!



Imagine
MANATEE



A VISION FOR MANATEE COUNTY

1112 Manatee Avenue West, 4th Floor
Bradenton, Florida 34205
941/749-3070
941/708-6154 Fax

www.imaginemanatee.org

