

ORDINANCE NO. 06-72

FILED FOR RECORD
R. B. SHORE

2006 DEC 18 PM 2:44

CLERK OF THE CIRCUIT COURT
MANATEE CO. FLORIDA

AN ORDINANCE OF MANATEE COUNTY, A POLITICAL SUBDIVISION OF THE STATE OF FLORIDA, AMENDING ORDINANCE NO. 05-34; CONTRACTING THE BOUNDARIES OF WATER'S EDGE COMMUNITY DEVELOPMENT DISTRICT PURSUANT TO CHAPTER 190, FLORIDA STATUTES (2005); DELETING APPROXIMATELY 27.8 ACRES; PROVIDING FOR SEVERABILITY; PROVIDING AN EFFECTIVE DATE; AND PROVIDING FOR ACKNOWLEDGEMENT AND AGREEMENT BY THE PETITIONER.

WHEREAS, on May 24, 2005, the Manatee County Board of County Commissioners (County) adopted Ordinance No. 05-34 establishing Water's Edge Community Development District (District) and describing the boundaries of the District, which included a total of approximately 249.2 acres; and

WHEREAS, the District is an independent special district and a local unit of special-purpose government, and the Board of Supervisors of the District may exercise the powers granted to the District pursuant to Chapter 190, Florida Statutes; and

WHEREAS, the Board of Supervisors of the District (Petitioner) has petitioned the County to adopt an ordinance contracting the boundaries of the District pursuant to Chapter 190, Florida Statutes (2005), and designating the real property shown and described in Exhibit A, attached hereto and incorporated herein, as the area of land comprising a total of approximately 27.8 acres to be deleted from the District; and

WHEREAS, pursuant to Section 190.046, Florida Statutes (2005), the filing of the petition for contraction by the Petitioner shall constitute consent of the landowners within the District other than of landowners whose land is proposed to be deleted from the District; and

WHEREAS, Richard T. Knowles and Melanie M. Knowles, as owners of all of the real property to be deleted from the District, consent to the contraction of the boundaries of the District to delete said lands from the District as shown and described in Exhibit A; and

WHEREAS, based on the information and representations provided by the Petitioner, the County finds all statements contained in the petition are true and correct and has relied thereon in adopting this Ordinance; and

WHEREAS, the contraction of the boundaries of the District is not inconsistent with any applicable element or portion of the state comprehensive plan or the local comprehensive plan; and

WHEREAS, the area of land remaining within the contracted boundaries of the District is of sufficient size, is sufficiently compact, and is sufficiently contiguous to be developable as one functional interrelated community planned for residential uses; and

FILED
CLERK OF THE CIRCUIT COURT
MANATEE CO. FLORIDA

ORDINANCE NO. 06-72

WHEREAS, the contracted District is the best alternative available for delivering the community development services and facilities to the area remaining within the District that is developed and will be developed with residential uses, and that will be served by the District as provided herein; and

WHEREAS, the proposed services and facilities to be provided by the District to the land remaining within the District will not be incompatible with the capacity and uses of existing local and regional community development services and facilities; and

WHEREAS, the area that is developed and will be developed with residential uses, and that is served and will be served by the District, is amenable to separate special-district government; and

WHEREAS, the District created under Ordinance No. 05-34, as an independent special district and a local unit of special-purpose government, shall continue to be governed by the provisions of Chapter 190, Florida Statutes, specifically Sections 190.006 through 190.041, Florida Statutes, as amended; and

WHEREAS, the acquisition, construction, financing, and operation of such systems and facilities as set forth in the provisions of Chapter 190, Florida Statutes, will protect, promote, and enhance the public health, safety, and general welfare of the County and its inhabitants, including the residential uses located within the District.

NOW, THEREFORE, BE IT ORDAINED BY THE BOARD OF COUNTY COMMISSIONERS OF MANATEE COUNTY, FLORIDA:

Section 1. Findings of Fact. The Board of County Commissioners of Manatee County, Florida, hereby adopts the "WHEREAS" clauses stated above as findings of fact.

Section 2. Authority. This Ordinance is adopted pursuant to Section 190.046, Florida Statutes (2005), and other applicable provisions of law governing county ordinances.

Section 3. Amendment. Ordinance No. 05-34 is hereby amended to delete the area of land shown and described in Exhibit A from the geographical boundaries and control of the District.

Section 4. Boundaries. The boundaries of the contracted Water's Edge Community Development District are those shown and described in Exhibit B, attached hereto and incorporated herein.

Section 5. Charter. The District shall be governed by the provisions of Chapter 190, Florida Statutes, specifically Sections 190.006 through 190.041, Florida Statutes, as amended. The District shall have, and the District Board may exercise, subject to the regulatory jurisdiction and permitting authority of all applicable governmental bodies, agencies, and special districts having

authority with respect to any area included in the petition and Chapter 190, Florida Statutes, any or all of the special powers set forth in Subsection 190.012(1), Florida Statutes.

Section 6. County Comprehensive Plan and County Land Development Code Compliance. The District shall be governed by the development standards of the Manatee County Comprehensive Plan and the Manatee County Land Development Code on its construction projects as if it were a private developer. The District shall be required to obtain all necessary federal, state, and local permits, including but not limited to site plan approval and building permits, for any construction it undertakes. All infrastructure shall conform to Manatee County standards.

Section 7. County Rights of Termination, Contraction, Expansion, and Limitation. All rights of Manatee County to terminate, contract, expand, or otherwise limit or affect the District as set forth in Section 190.046, Florida Statutes, are hereby specifically reserved.

Section 8. Severability. If any section, subsection, sentence, clause, provision, or part of this Ordinance shall be held invalid for any reason by a court of competent jurisdiction, the remainder of this Ordinance shall not be affected thereby, but shall remain in full force and effect.

Section 9. Effective Date. This Ordinance shall be effective immediately upon the filing of a certified copy of this Ordinance with the Secretary of State pursuant to Section 125.66, Florida Statutes.

Section 10. Petitioner Acknowledgement and Agreement. Petitioner acknowledges and agrees to the statements and provisions contained in this Ordinance and evidences such by execution of the acknowledgement and agreement provided below.

ADOPTED, with a quorum present and voting, this 7 day of DECEMBER, 2006.

BOARD OF COUNTY COMMISSIONERS
OF MANATEE COUNTY, FLORIDA

By: Joe McClash
Joe McClash, Chairman

Attest: R. B. Shore
Clerk of the Circuit Court


By: Susan G. Romine
Susan G. Romine,
Deputy Clerk



ACKNOWLEDGEMENT AND AGREEMENT

The undersigned Petitioner, the Board of Supervisors of Water's Edge Community Development District, by and through the undersigned, does hereby acknowledge and agree to the statements and provisions contained in this Ordinance No. 06-72.

Board of Supervisors of Water's Edge
Community Development District

By: 
~~James R. Schier, Chairman~~
Dale E. Weidemiller
Vice-Chairman


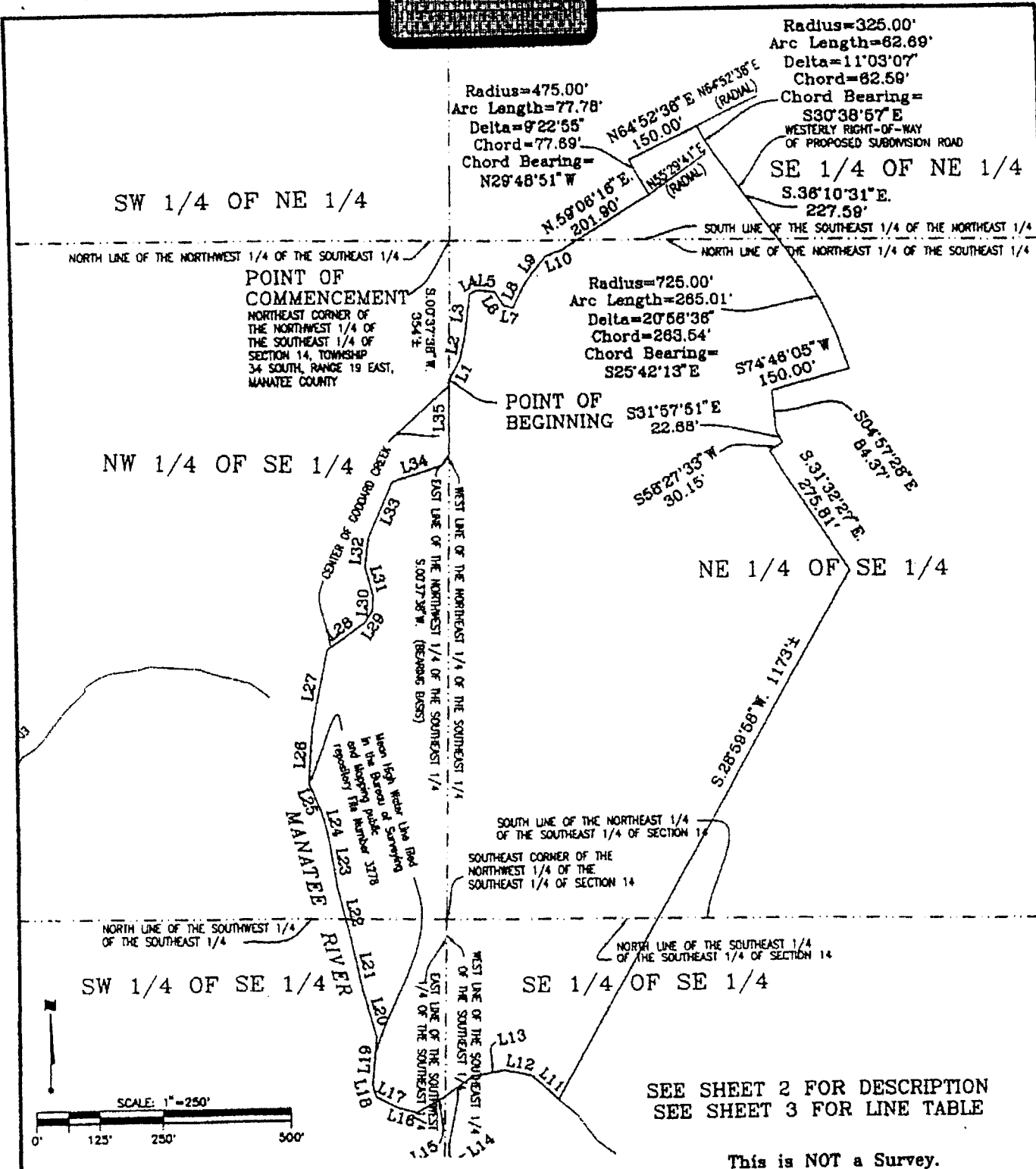
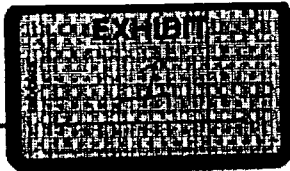
Attest: 
Karen L. Byrnes, Assistant Secretary

Exhibit A
to Ordinance 06-72

Deleted Land

Water's Edge
Community Development District
Contraction



FOR: RIGGS NATIONAL PROPERTIES

SKETCH & DESCRIPTION OF
KNOWLES LOT
SECTION 14, TOWNSHIP 34 S., RANGE 19 E.,
MANATEE COUNTY, FLORIDA

Wilson Miller

Planners • Engineers • Ecologists • Surveyors • Landscape Architects • Transportation Consultants

Wilson Miller, Inc.
Attn: For Myers • Sarasota • Bradenton • Tampa • Tallahassee
800 Professional Parkway East, Suite 200 • Sarasota, Florida 34203-5001 • Phone 941-552-9922 • Fax 941-552-9920 • Web Site www.wilsonmiller.com

TASK CODE: MASL2	DRAWN BY: JWB	CHECKED BY: RRC	CAD FILE: 4139-001-K09	PROJECT NO: 04139-000-000	SHEET 1 OF 3	DRAWING INDEX NO: A4139-001-009	REV:
---------------------	------------------	--------------------	---------------------------	------------------------------	-----------------	------------------------------------	------

A parcel of land lying in Section 14, Township 34 South, Range 19 East, Manatee County, Florida and described as follows:

Commence at the northeast corner of the Northwest 1/4 of the Southeast 1/4 of said Section 14; thence S.00°37'38"W., along the west line of said Northwest 1/4 of the Southeast 1/4, a distance of 354 feet, more or less to the approximate center line of Goddard Creek for a POINT OF BEGINNING; thence northeasterly along said approximate creek center line for the following ten (10) calls; thence N.29°23'59"E., a distance of 44.79 feet; (2) thence N.12°03'15"E., a distance of 50.02 feet; (3) thence N.07°04'25"E., a distance of 79.53 feet; (4) thence N.63°27'28"E., a distance of 16.06 feet; (5) thence S.84°42'54"E., a distance of 35.41 feet; (6) thence S.33°05'49"E., a distance of 33.48 feet; (7) thence S.77°55'01"E., a distance of 18.70 feet; (8) thence N.26°35'12"E., a distance of 55.71 feet; (9) thence N.38°35'35"E., a distance of 61.75 feet; (10) thence N.68°46'08"E., a distance of 38.68 feet; thence N.59°06'16"E., a distance of 201.90 feet to the point of curvature of a non tangent curve to the right, of which the radius point lies N.55°29'41"E., a radial distance of 475.00 feet; thence northwesterly along the arc of said curve, through a central angle of 09°22'55", an arc length of 77.78 feet to the point of tangency of said curve; thence N.64°52'36"E., a distance of 150.00 feet to the point of curvature of a non tangent curve to the left, of which the radius point lies N.64°52'36"E., a radial distance of 325.00 feet, said point being on the southeasterly right-of-way of a proposed road; thence southeasterly along said southeasterly proposed right-of-way for the following three calls; (1) thence southeasterly along the arc of said curve, through a central angle of 11°03'07", an arc length of 62.69 feet to the point of tangency of said curve; (2) thence S.36°10'31"E., a distance of 227.59 feet to a point of curvature of a curve to the right having a radius of 725.00 feet and a central angle of 20°56'36"; (3) thence southeasterly along the arc of said curve a distance of 265.01 feet to the end of said curve; thence S.74°46'05"W., a distance of 150.00 feet; thence S.04°57'28"E., a distance of 84.37 feet; thence S.31°57'51"E., a distance of 22.68 feet; thence S.58°27'33"W., a distance of 30.15 feet; thence S.31°32'27"E., a distance of 275.81 feet; thence S.28°59'58"W., a distance of 1173 feet, more or less to the Mean High Water Line of the Manatee River; thence along said Mean High Water Line for the following fifteen (15) calls; (1) thence N.48°32'27"W., a distance of 71.08 feet; (2) thence N.78°19'16"W., a distance of 52.55 feet; (3) thence S.79°47'15"W., a distance of 61.17 feet; (4) thence S.55°01'20"W., a distance of 71.82 feet; (5) thence S.61°16'17"W., a distance of 57.25 feet; (6) thence N.74°18'32"W., a distance of 38.69 feet; (7) thence N.63°52'58"W., a distance of 45.63 feet; (8) thence N.14°29'53"W., a distance of 25.31 feet; (9) thence N.04°52'51"E., a distance of 92.07 feet; (10) thence N.16°32'17"W., a distance of 91.43 feet; (11) thence N.12°24'20"W., a distance of 98.51 feet; (12) thence N.14°40'49"W., a distance of 109.34 feet; (13) thence N.09°47'48"W., a distance of 98.89 feet; (14) thence N.14°47'37"W., a distance of 50.18 feet; (15) thence N.23°10'31"W., a distance of 64.42 feet, more or less to the approximate center line of Goddard Creek; thence northerly along the said approximate center line for the following eleven (11) calls; (1) thence N.03°34'25"E., a distance of 111.03 feet; (2) thence N.10°33'53"E., a distance of 153.40 feet; (3) thence N.53°47'49"E., a distance of 89.96 feet; (4) thence N.34°27'57"E., a distance of 27.69 feet; (5) thence N.03°39'21"E., a distance of 30.72 feet; (6) thence N.15°36'28"W., a distance of 58.24 feet; (7) thence N.06°59'56"E., a distance of 58.79 feet; (8) thence N.23°45'32"E., a distance of 118.30 feet; (9) thence N.72°03'16"E., a distance of 104.45 feet; (10) thence N.33°42'59"E., a distance of 20.97 feet; (11) thence N.00°38'40"E., a distance of 148.29 feet to the POINT OF BEGINNING.

Containing 1,213,215 square feet or 27.8 acres, more or less.

SEE SHEET 1 FOR SKETCH
SEE SHEET 3 FOR LINE TABLE

NOTES:

- UNLESS IT BEARS THE SIGNATURE AND THE ORIGINAL RAISED SEAL OF A FLORIDA SURVEYOR AND MAPPER, THIS SKETCH, DRAWING, PLAT OR MAP IS FOR INFORMATIONAL PURPOSES ONLY.
- BEARINGS SHOWN HEREON ARE RELATIVE TO THE WEST LINE OF THE NORTHEAST 1/4 OF THE NORTHWEST 1/4 OF SECTION 14 BEING N.00°37'38"E.
- THIS IS A SKETCH ONLY AND DOES NOT REPRESENT A FIELD SURVEY.

Jennie W. Brannon
Jennie W. Brannon, P.S.M.
Florida Registration No. 5041

5/9/05
Date of Signature

This is NOT a Survey.

FOR: RIGGS NATIONAL PROPERTIES

SKETCH & DESCRIPTION OF
KNOWLES LOT
SECTION 14, TOWNSHIP 34 S., RANGE 19 E.,
MANATEE COUNTY, FLORIDA

Wilson Miller

Planners - Engineers - Ecologists - Surveyors - Landscape Architects - Transportation Consultants

Wilson Miller, Inc.

Multiple-Point Members - Registered - Statewide - Technicians

1800 Professional Parkway East, Suite 100 - Sarasota, Florida 34230-4661 - Phone 941-552-8800 - Fax 941-552-8800 - Web Site: www.wilsonmiller.com

TASK CODE: MASL2	DRAWN BY: JWB	CHECKED BY: RRC	CAD FILE: 4139-001-K09	PROJECT NO: 04139-000-000	SHEET 2 OF 3	DRAWING INDEX NO: A4139-001-009*	REV:
---------------------	------------------	--------------------	---------------------------	------------------------------	-----------------	-------------------------------------	------

LINE TABLE		
LINE	BEARING	LENGTH
L1	N29°23'59"E	44.79'
L2	N12°03'15"E	50.02'
L3	N07°04'25"E	79.53'
L4	N63°27'28"E	16.06'
L5	S84°42'54"E	35.41'
L6	S33°05'49"E	33.48'
L7	S77°55'01"E	18.70'
L8	N26°35'12"E	55.71'
L9	N38°35'35"E	61.75'
L10	N68°46'08"E	38.68'
L11	N48°32'27"W	71.08'
L12	N78°19'16"W	52.55'
L13	S79°47'13"W	61.17'
L14	S55°01'20"W	71.82'
L15	S61°16'17"W	57.25'
L16	N74°18'32"W	38.69'
L17	N63°52'58"W	45.63'
L18	N14°29'53"W	25.31'
L19	N04°52'51"E	92.07'
L20	N16°32'17"W	91.43'
L21	N12°24'20"W	98.51'
L22	N14°40'49"W	109.34'
L23	N09°47'48"W	98.89'
L24	N14°47'37"W	50.18'
L25	N23°10'31"W	64.42'
L26	N03°34'25"E	111.03'
L27	N10°33'53"E	153.40'
L28	N53°47'49"E	89.96'
L29	N34°27'57"E	27.69'
L30	N03°39'21"E	30.72'
L31	N15°36'28"W	58.24'
L32	N06°59'56"E	58.79'
L33	N23°45'32"E	118.30'
L34	N72°03'16"E	104.45'
L35	N00°38'40"E	148.29'

SEE SHEET 1 FOR SKETCH
SEE SHEET 2 FOR DESCRIPTION

This is NOT a Survey.

FOR: RIGGS NATIONAL PROPERTIES

SKETCH & DESCRIPTION OF
KNOWLES LOT
SECTION 14, TOWNSHIP 34 S., RANGE 19 E.,
MANATEE COUNTY, FLORIDA

WilsonMiller

Planners • Engineers • Ecologists • Surveyors • Landscape Architects • Transportation Consultants

WilsonMiller, Inc.

Naples • Fort Myers • Sarasota • Bradenton • Tampa • Tallahassee

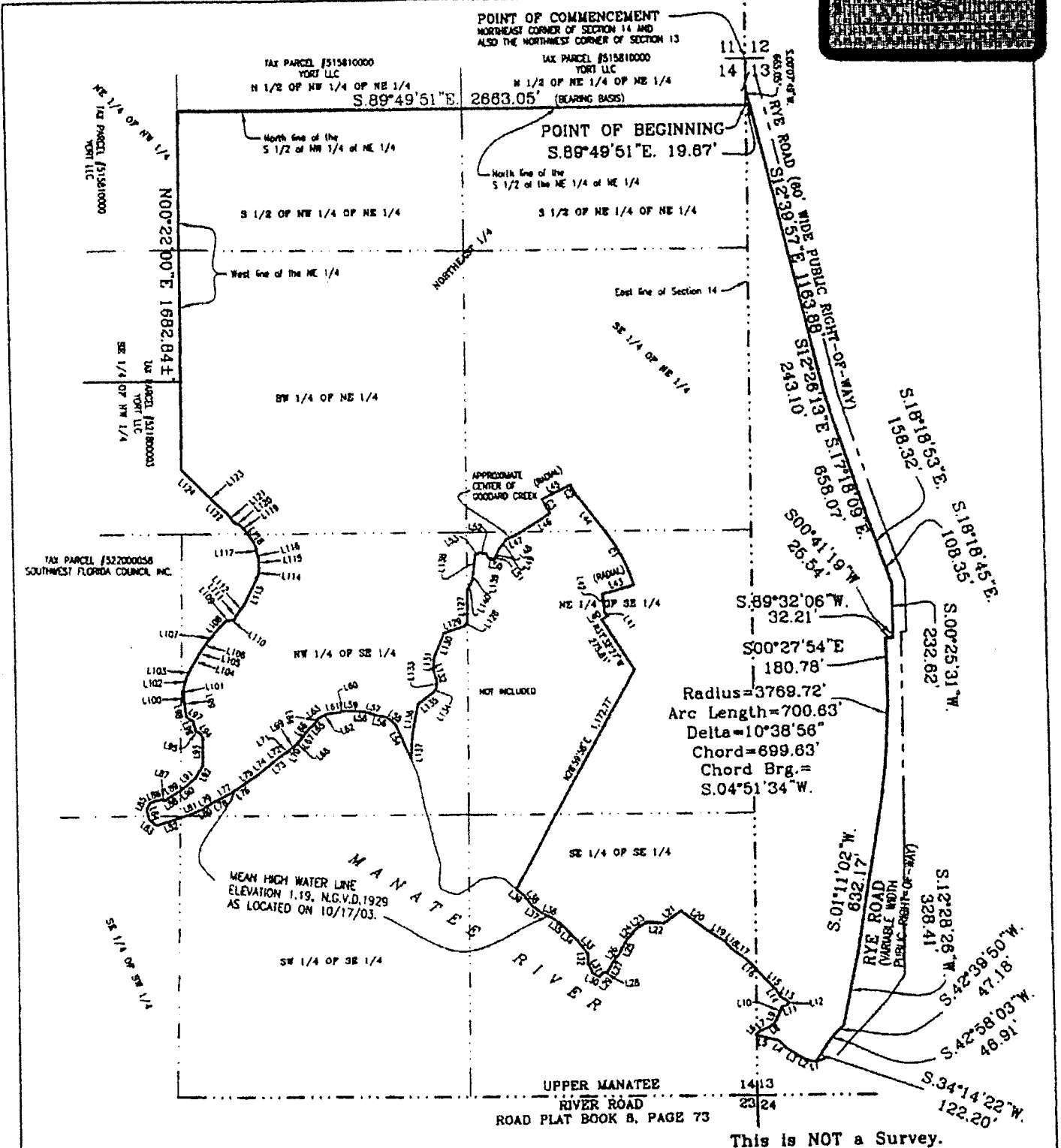
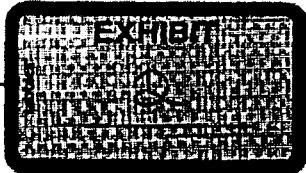
4820 Professional Parkway East, Suite 100 • Sarasota, Florida 34242-9951 • Phone 941-557-8800 • Fax 941-557-8800 • Web Site www.wilsonmiller.com

TASK CODE: MASL2	DRAWN BY: JWB	CHECKED BY: RRC	CAD FILE: 4139-001-K09	PROJECT NO: 04139-000-000	SHEET 3 OF 3	DRAWING INDEX NO: A4139-001-009*	REV:
---------------------	------------------	--------------------	---------------------------	------------------------------	-----------------	-------------------------------------	------

Exhibit B
to Ordinance 06-72

Contracted Boundaries

Water's Edge
Community Development District
Contraction



Radius=3769.72'
 Arc Length=700.63'
 Delta=10°38'56\"/>

This is NOT a Survey.

FOR: RIGGS NATIONAL PROPERTY

SKETCH & DESCRIPTION OF
 WATERS EDGE COMMUNITY DEVELOPMENT DISTRICT
 SECTIONS 13 & 14, TOWNSHIP 34 S., RANGE 19 E.,
 MANATEE COUNTY, FLORIDA

Wilson Miller
 Planners • Engineers • Ecologists • Surveyors • Landscape Architects • Transportation Consultants
 Wilson Miller, Inc.
 2820 Professional Parkway East, Suite 100 • Sarasota, Florida 34243-4844 • Phone 941-557-8800 • Fax 941-557-4910 • Web site www.wilsonmiller.com

TASK CODE: GCCDD	DRAWN BY: JWB	CHECKED BY: RRC	CAD FILE: 04139-001-K07	PROJECT NO: 04139-004-000	SHEET 1 OF 4	DRAWING INDEX NO: A4139-000-009	REV:
---------------------	------------------	--------------------	----------------------------	------------------------------	-----------------	------------------------------------	------

EXHIBIT

DESCRIPTION:

A Tract of land lying in Sections 13 and 14, Township 34 South, Range 19 East, Manatee County, Florida and described as follows:

Commence at the northeast corner of said Section 14; thence S.00°07'49"W., along the east line of said Section 14, a distance of 665.00 feet to the POINT OF BEGINNING, said point being on the north line of the South 1/2 of the Northeast 1/4 of the Northeast 1/4 of said Section 14; thence S.89°49'51"E., along said north line, a distance of 19.67 feet to the westerly right-of-way line of Rye Road (60-foot wide public right-of-way at this point); thence along said westerly right-of-way for the following fifteen (15) calls; (1) thence S.12°39'57"E., a distance of 1,163.88 feet; (2) thence S.12°26'13"E., a distance of 243.10 feet; (3) thence S.17°18'09"E., a distance of 658.07 feet; (4) thence S.18°18'53"E., a distance of 158.32 feet; (5) thence S.18°18'45"E., a distance of 108.35 feet; (6) thence S.00°25'31"W., a distance of 232.62 feet; (7) thence S.00°41'19"W., a distance of 25.54 feet; (8) thence S.89°32'06"W., a distance of 32.21 feet; (9) thence S.00°27'54"E., a distance of 180.78 feet to the point of curvature of a curve to the right having a radius of 3,769.72 feet and a central angle of 10°38'56"; (10) thence southerly along the arc of said curve, an arc length of 700.63 feet to the point of tangency of said curve; (11) thence S.10°11'02"W., a distance of 632.17 feet; (12) thence S.12°28'26"W., a distance of 328.41 feet; (13) thence S.42°39'50"W., a distance of 47.18 feet; (14) thence S.42°58'03"W., a distance of 46.91 feet; (15) thence S.34°14'22"W., a distance of 122.20 feet to a point on the northerly mean high water line of Manatee River, as located on October 17, 2003 and recorded at the Bureau of Surveying and Mapping in File Number 3278; thence along said mean high water line for the following thirty-nine (39) calls; (1) thence S.88°51'27"W., a distance of 18.87 feet; (2) thence N.65°45'22"W., a distance of 52.57 feet; (3) thence N.56°07'03"W., a distance of 74.92 feet; (4) thence N.46°05'07"W., a distance of 54.81 feet; (5) thence N.74°36'35"W., a distance of 105.82 feet; (6) thence N.43°37'34"E., a distance of 17.11 feet; (7) thence N.63°08'04"E., a distance of 56.21 feet; (8) thence N.56°29'30"E., a distance of 29.93 feet; (9) thence N.26°51'42"E., a distance of 42.98 feet; (10) thence N.22°06'44"E., a distance of 43.45 feet; (11) thence N.73°47'47"E., a distance of 26.86 feet; (12) thence N.09°47'28"E., a distance of 15.53 feet; (13) thence N.56°23'12"W., a distance of 45.48 feet; (14) thence N.26°45'26"W., a distance of 31.02 feet; (15) thence N.41°41'56"W., a distance of 91.58 feet; (16) thence N.41°57'04"W., a distance of 108.03 feet; (17) thence N.51°01'18"W., a distance of 89.30 feet; (18) thence N.41°10'14"W., a distance of 45.48 feet; (19) thence N.55°44'42"W., a distance of 95.91 feet; (20) thence N.51°16'46"W., a distance of 146.47 feet; (21) thence S.53°31'43"W., a distance of 96.36 feet; (22) thence N.85°42'18"W., a distance of 78.13 feet; (23) thence S.58°23'16"W., a distance of 59.28 feet; (24) thence S.39°38'36"W., a distance of 68.82 feet; (25) thence S.28°35'29"W., a distance of 70.77 feet; (26) thence S.36°24'56"W., a distance of 42.28 feet; (27) thence S.28°28'00"W., a distance of 60.77 feet; (28) thence S.88°35'54"W., a distance of 20.86 feet; (29) thence S.42°20'17"W., a distance of 25.16 feet; (30) thence N.61°21'30"W., a distance of 34.94 feet; (31) thence N.23°05'46"W., a distance of 50.30 feet; (32) thence N.00°41'06"W., a distance of 48.07 feet; (33) thence N.37°04'00"W., a distance of 76.62 feet; (34) thence N.42°44'53"W., a distance of 89.71 feet; (35) thence N.49°29'08"W., a distance of 60.96 feet; (36) thence N.63°30'12"W., a distance of 68.22 feet; (37) thence N.52°29'08"W., a distance of 51.79 feet; (38) thence N.36°23'43"W., a distance of 63.71 feet; (39) thence N.49°41'18"W., a distance of 44.92 feet; thence N.28°59'58"E., a distance of 1,172.77 feet; thence N.31°32'27"W., a distance of 275.81 feet; thence N.58°27'33"E., a distance of 30.15 feet; thence N.31°57'51"W., a distance of 22.68 feet; thence N.04°57'28"W., a distance of 84.37 feet; thence N.74°46'05"E., a distance of 150.00 feet to the point of curvature of a non tangent curve to the left, of which the radius point lies S.74°46'05"W., a radial distance of 725.00 feet, said point being on the southeasterly right-of-way of a proposed road; thence along said proposed southeasterly right-of-way line for the following three (3) calls; (1) thence northwesterly along the arc of said curve, through a central angle of 20°56'36", an arc length of 265.01 feet to the point of tangency of said curve; (2) thence N.36°10'31"W., a distance of 227.59 feet to a point of curvature of a curve to the right having a radius of 325.00 feet and a central angle of 11°03'07"; (3) thence northwesterly along the arc of said curve a distance of 62.69 feet to the end of said curve; thence S.64°52'36"W., a distance of 150.00 feet to the point of curvature of a non tangent curve to the left, of which the radius point lies N.64°52'36"E., a radial distance of 475.00 feet; thence southeasterly along the arc of said curve, through a central angle of 09°22'55", an arc length of 77.78 feet to the end of said curve; thence S.59°06'16"W., a distance of 201.90 feet to the approximate center line of Goddard Creek; thence southwesterly along said approximate creek center line for the following ten (10) calls; (1) thence S.68°46'08"W., a distance of 38.68 feet; (2) thence S.38°35'35"W., a distance of 61.75 feet; (3) thence S.26°35'12"W., a distance of 55.71 feet; (4) thence N.77°55'01"W., a distance of 18.70 feet; (5) thence N.33°05'49"W., a distance of 33.48 feet; (6) thence N.84°42'54"W., a distance of 35.41 feet; (7) thence S.63°27'28"W., a distance of 16.06 feet; (8) thence S.07°04'25"W., a distance of 79.53 feet; (9) thence S.12°03'15"W., a distance of 50.02 feet; (10) thence S.29°23'59"W., a distance of 44.79 feet to a point on the west line of said Northwest 1/4 of the Southeast 1/4 of the above mentioned Section 14; thence S.00°38'40"W., along said west line, a distance of 148.29 feet; thence continuing along the above mentioned approximate center line of Goddard Creek for the following ten (10) calls; (1) thence S.33°42'59"W., a distance of 20.97 feet; (2) thence S.72°03'16"W., a distance of 104.45 feet; (3) thence S.23°45'32"W., a distance of 118.30 feet; (4) thence S.06°59'56"W., a distance of 58.79 feet; (5) thence S.15°36'28"E., a distance of 58.24 feet; (6) thence S.03°39'21"W., a distance of 30.72 feet; (7) thence S.34°27'57"W., a distance of 27.69 feet; (8) thence S.53°47'49"W., a distance of 89.96 feet; (9) thence S.10°33'53"W., a distance of 153.40 feet; (10) thence S.03°34'25"W., a distance of 111.03 feet to a point on the above mentioned Mean High Water Line; thence along said Mean High Water Line for the following seventy-one (71) calls; (1) thence N.23°10'31"W., a distance of 185.73 feet; (2) thence N.51°30'03"W., a distance of 48.23 feet; (3) thence N.76°28'17"W., a distance of 53.41 feet; (4) thence N.70°34'46"W., a distance of 46.88 feet; (5) thence N.85°48'53"W., a distance of 41.82 feet; (6) thence N.86°41'17"W., a distance of 55.64 feet; (7) thence S.77°17'50"W., a distance of 27.66 feet; (8) thence S.82°52'15"W., a distance of 49.34 feet; (9) thence S.68°36'32"W., a distance of 32.11 feet; (10) thence S.54°31'45"W., a distance of 25.29 feet;

Continued on Sheet 3

This is NOT a Survey.

FOR: RIGGS NATIONAL PROPERTY

SKETCH & DESCRIPTION OF
WATERS EDGE COMMUNITY DEVELOPMENT DISTRICT
SECTIONS 13 & 14, TOWNSHIP 34 S., RANGE 19 E.,
MANATEE COUNTY, FLORIDA



Planners • Engineers • Ecologists • Surveyors • Landscape Architects • Transportation Consultants
Wilson Miller, Inc.
1800 Professional Parkway East, Suite 200 • Sarasota, Florida 34240-3401 • Phone 941-557-8800 • Fax 941-557-8800 • Web Site www.wilsonmiller.com

TASK CODE:	DRAWN BY:	CHECKED BY:	CAD FILE:	PROJECT NO:	SHEET	DRAWING INDEX NO:	REV:
GCCDD	JWB	RRC	04139-001-K07	04139-004-000	2 OF 4	A4139-000-009	

EXHIBIT 2

Continued from sheet 2

(11) thence S.07°23'47"E., a distance of 8.13 feet; (12) thence S.46°11'38"W., a distance of 54.18 feet; (13) thence S.39°01'49"W., a distance of 43.15 feet; (14) thence S.34°54'50"W., a distance of 29.55 feet; (15) thence S.48°13'00"W., a distance of 28.58 feet; (16) thence S.57°26'48"W., a distance of 23.91 feet; (17) thence S.24°30'10"W., a distance of 15.08 feet; (18) thence S.61°39'20"W., a distance of 27.33 feet; (19) thence S.54°50'46"W., a distance of 39.76 feet; (20) thence S.51°50'21"W., a distance of 36.82 feet; (21) thence S.50°37'02"W., a distance of 80.57 feet; (22) thence S.55°23'13"W., a distance of 88.12 feet; (23) thence S.55°35'28"W., a distance of 58.56 feet; (24) thence S.62°01'10"W., a distance of 55.15 feet; (25) thence S.63°09'02"W., a distance of 48.58 feet; (26) thence S.57°09'15"W., a distance of 40.52 feet; (27) thence S.61°39'21"W., a distance of 35.45 feet; (28) thence S.65°43'40"W., a distance of 48.99 feet; (29) thence S.72°38'34"W., a distance of 153.95 feet; (30) thence N.49°35'28"W., a distance of 43.52 feet; (31) thence N.12°02'44"W., a distance of 49.87 feet; (32) thence N.27°17'11"E., a distance of 35.61 feet; (33) thence N.73°24'15"E., a distance of 53.39 feet; (34) thence S.70°24'30"E., a distance of 17.36 feet; (35) thence N.56°40'11"E., a distance of 23.05 feet; (36) thence N.58°38'28"E., a distance of 46.43 feet; (37) thence N.53°47'51"E., a distance of 52.79 feet; (38) thence N.47°41'24"E., a distance of 55.75 feet; (39) thence N.30°34'43"E., a distance of 66.17 feet; (40) thence N.00°49'46"E., a distance of 132.49 feet; (41) thence N.33°10'55"W., a distance of 30.82 feet; (42) thence N.70°46'05"W., a distance of 15.94 feet; (43) thence N.17°03'25"W., a distance of 47.11 feet; (44) thence N.51°15'34"W., a distance of 36.97 feet; (45) thence N.07°55'46"W., a distance of 55.17 feet; (46) thence N.10°42'25"W., a distance of 17.02 feet; (47) thence N.01°13'35"W., a distance of 26.43 feet; (48) thence N.00°43'20"W., a distance of 42.13 feet; (49) thence N.17°15'38"E., a distance of 49.93 feet; (50) thence N.25°57'28"E., a distance of 55.21 feet; (51) thence N.32°52'57"E., a distance of 52.82 feet; (52) thence N.29°26'32"E., a distance of 36.89 feet; (53) thence N.36°56'45"E., a distance of 51.21 feet; (54) thence N.40°47'49"E., a distance of 43.73 feet; (55) thence N.43°26'32"E., a distance of 85.67 feet; (56) thence S.88°08'50"E., a distance of 13.94 feet; (57) thence N.77°37'30"E., a distance of 21.53 feet; (58) thence N.31°47'49"E., a distance of 34.86 feet; (59) thence N.39°07'20"E., a distance of 47.76 feet; (60) thence N.26°03'03"E., a distance of 149.98 feet; (61) thence N.08°02'23"E., a distance of 34.03 feet; (62) thence N.02°04'31"W., a distance of 52.89 feet; (63) thence N.16°21'45"W., a distance of 16.37 feet; (64) thence N.10°20'59"W., a distance of 39.04 feet; (65) thence N.31°38'08"W., a distance of 77.12 feet; (66) thence N.41°13'38"W., a distance of 43.28 feet; (67) thence N.65°45'01"W., a distance of 30.11 feet; (68) thence N.36°07'45"W., a distance of 47.29 feet; (69) thence N.46°51'59"W., a distance of 96.62 feet; (70) thence N.46°31'57"W., a distance of 33.03 feet; (71) thence N.44°42'34"W., a distance of 171.52 feet to a point on the west line of the Northeast 1/4 of said Section 14; thence N.00°22'00"E., along said west line, a distance of 1,682.84 to the northwest corner of the South 1/2 of the Northwest 1/4 of the Northeast 1/4 of said Section 14; thence S.89°49'51"E., along the north line of the South 1/2 of the Northwest 1/4 of Northeast 1/4 and the north line of the South 1/2 of the Northeast 1/4 of the Northeast 1/4, a distance of 2,663.05 feet to the POINT OF BEGINNING.

Said Tract contains 9,640,892 square feet or 221.32 acres, more or less.

NOTES:

1. UNLESS IT BEARS THE SIGNATURE AND THE ORIGINAL RAISED SEAL OF A FLORIDA SURVEYOR AND MAPPER, THIS SKETCH, DRAWING, PLAT OR MAP IS FOR INFORMATIONAL PURPOSES ONLY.
2. BEARINGS SHOWN HEREON ARE RELATIVE TO THE NORTH LINE OF THE SOUTH 1/2 OF THE NE 1/4 OF THE NE 1/4, BEING S.89°49'51"E.
3. THIS IS A SKETCH ONLY AND DOES NOT REPRESENT A FIELD SURVEY.

Jennie W. Brannon, P.S.M.
Florida Registration No. 5041

Date of Signature

This is NOT a Survey.

FOR: RIGGS NATIONAL PROPERTY

SKETCH & DESCRIPTION OF
WATERS EDGE COMMUNITY DEVELOPMENT DISTRICT
SECTIONS 13 & 14, TOWNSHIP 34 S., RANGE 19 E.,
MANATEE COUNTY, FLORIDA

Wilson Miller

Planners • Engineers • Ecologists • Surveyors • Landscape Architects • Transportation Consultants
Wilson Miller, Inc.

Alaska • Fort Myers • Orlando • Bradenton • Tampa • Tallahassee
8800 Professional Parkway East, Suite 100 • Sarasota, Florida 34237-6601 • Phone 941-557-6070 • Fax 941-557-6062 • Web Site www.wilsonmiller.com

TASK CODES GCCDD	DRAWN BY: JWB	CHECKED BY: RRC	CAD FILE: 04139-001-K07	PROJECT NO: 04139-004-000	SHEET 3 OF 4	DRAWING INDEX NO: A4139-000-009	REV:
---------------------	------------------	--------------------	----------------------------	------------------------------	-----------------	------------------------------------	------

EXHIBIT

LINE TABLE			LINE TABLE			LINE TABLE		
LINE	BEARING	LENGTH	LINE	BEARING	LENGTH	LINE	BEARING	LENGTH
L1	S88°51'27"W	18.87'	L47	S68°46'08"W	38.68'	L92	N30°34'43"E	66.17'
L2	N65°45'22"W	52.57'	L48	S38°35'35"W	61.75'	L93	N00°49'46"E	132.49'
L3	N56°07'03"W	74.92'	L49	S26°35'12"W	55.71'	L94	N33°10'55"W	30.82'
L4	N46°05'07"W	54.81'	L50	N77°55'01"W	18.70'	L95	N70°46'05"W	15.94'
L5	N74°36'35"W	105.82'	L51	N33°05'49"W	33.48'	L96	N17°03'25"W	47.11'
L6	N43°37'34"E	17.11'	L52	N84°42'54"W	35.41'	L97	N51°15'34"W	36.97'
L7	N63°08'04"E	56.21'	L53	S63°27'28"W	16.06'	L98	N07°55'46"W	55.17'
L8	N56°29'30"E	29.93'	L54	N23°10'31"W	185.73'	L99	N10°42'25"W	17.02'
L9	N26°51'42"E	42.98'	L55	N51°30'03"W	48.23'	L100	N01°13'35"W	26.43'
L10	N22°06'44"E	43.45'	L56	N76°28'17"W	53.41'	L101	N00°43'20"W	42.13'
L11	N73°47'47"E	26.86'	L57	N70°34'46"W	46.88'	L102	N17°15'38"E	49.93'
L12	N09°47'28"E	15.53'	L58	N85°48'53"W	41.82'	L103	N25°57'28"E	55.21'
L13	N56°23'12"W	45.48'	L59	N86°41'17"W	55.64'	L104	N32°52'57"E	52.82'
L14	N26°45'26"W	31.02'	L60	S77°17'50"W	27.66'	L105	N29°26'32"E	36.89'
L15	N41°41'56"W	91.58'	L61	S82°52'15"W	49.34'	L106	N36°56'45"E	51.21'
L16	N41°57'04"W	108.03'	L62	S68°36'32"W	32.11'	L107	N40°47'49"E	43.73'
L17	N51°01'18"W	89.30'	L63	S54°31'45"W	25.29'	L108	N43°26'32"E	85.67'
L18	N41°10'14"W	45.48'	L64	S07°23'47"E	8.13'	L109	S88°08'50"E	13.94'
L19	N55°44'42"W	95.91'	L65	S46°11'38"W	54.18'	L110	N77°37'30"E	21.53'
L20	N51°16'46"W	146.47'	L66	S39°01'49"W	43.15'	L111	N31°47'49"E	34.86'
L21	S53°31'43"W	96.36'	L67	S34°54'50"W	29.55'	L112	N39°07'20"E	47.76'
L22	N85°42'18"W	78.13'	L68	S48°13'00"W	28.58'	L113	N26°03'03"E	149.98'
L23	S58°23'16"W	59.28'	L69	S57°26'48"W	23.91'	L114	N08°02'23"E	34.03'
L24	S39°38'36"W	68.82'	L70	S24°30'10"W	15.08'	L115	N02°04'31"W	52.89'
L25	S28°35'29"W	70.77'	L71	S61°39'20"W	27.33'	L116	N16°21'45"W	16.37'
L26	S36°24'56"W	42.28'	L72	S54°50'46"W	39.76'	L117	N10°20'59"W	39.04'
L27	S28°28'00"W	60.77'	L73	S51°50'21"W	36.82'	L118	N31°38'08"W	77.12'
L28	S88°35'54"W	20.86'	L74	S50°37'02"W	80.57'	L119	N41°13'38"W	43.28'
L29	S42°20'17"W	25.16'	L75	S55°23'13"W	88.12'	L120	N65°45'01"W	30.11'
L30	N61°21'30"W	34.94'	L76	S55°35'28"W	58.56'	L121	N36°07'45"W	47.29'
L31	N23°05'46"W	50.30'	L77	S62°01'10"W	55.15'	L122	N46°51'59"W	96.62'
L32	N00°41'06"W	48.07'	L78	S63°09'02"W	48.58'	L123	N46°31'57"W	33.03'
L33	N37°04'00"W	76.62'	L79	S57°09'15"W	40.52'	L124	N44°42'34"W	171.52'
L34	N42°44'53"W	89.71'	L80	S61°39'21"W	35.45'	L127	S00°38'40"W	148.29'
L35	N49°29'08"W	60.96'	L81	S66°43'40"W	48.99'	L128	S33°42'59"W	20.97'
L36	N63°30'12"W	68.22'	L82	S72°38'34"W	153.95'	L129	S72°03'16"W	104.45'
L37	N52°29'08"W	51.79'	L83	N49°35'28"W	43.52'	L130	S23°45'32"W	118.30'
L38	N36°23'43"W	63.71'	L84	N12°02'44"W	49.87'	L131	S06°59'56"W	58.79'
L39	N49°41'18"W	44.92'	L85	N27°17'11"E	35.61'	L132	S15°36'28"E	58.24'
L40	N58°27'33"E	30.15'	L86	N73°24'15"E	53.39'	L133	S03°39'21"W	30.72'
L41	N31°57'51"W	22.68'	L87	S70°24'30"E	17.36'	L134	S34°27'57"W	27.69'
L42	N04°57'28"W	84.37'	L88	N56°40'11"E	23.05'	L135	S53°47'49"W	89.96'
L43	N74°46'03"E	150.00'	L89	N58°38'28"E	46.43'	L136	S10°33'53"W	153.40'
L44	N36°10'31"W	227.59'	L90	N53°47'51"E	52.79'	L137	S03°34'25"W	111.03'
L45	S64°52'36"W	150.00'	L91	N47°41'24"E	55.75'	L138	S07°04'25"W	79.53'
L46	S59°06'16"W	201.90'				L139	S12°03'15"W	50.02'
						L140	S29°23'59"W	44.79'

CURVE TABLE				
CURVE	RADIUS	DELTA	ARC	CHORD BRG.
C1	725.00'	20°56'36"	265.01'	263.54' N25°42'13"W
C2	325.00'	11°03'07"	62.69'	62.59' S30°38'57"E
C3	475.00'	9°22'55"	77.78'	77.69' S29°48'51"E

This is NOT a Survey.

FOR: RIGGS NATIONAL PROPERTY

SKETCH & DESCRIPTION OF
WATERS EDGE COMMUNITY DEVELOPMENT DISTRICT
SECTIONS 13 & 14, TOWNSHIP 34 S., RANGE 19 E.,
MANATEE COUNTY, FLORIDA



Planners • Engineers • Ecologists • Surveyors • Landscape Architects • Transportation Consultants

Wilson Miller, Inc.

Jupiter • Fort Myers • Sarasota • Bradenton • Tampa • Tallahassee

4800 Professional Parkway East, Suite 100 • Sarasota, Florida 34237-5461 • Phone 941-557-9633 • Fax 941-557-9632 • Web Site www.wilsonmiller.com

TASK CODE: GCCDD	DRAWN BY: JWB	CHECKED BY: RRC	CAD FILE: 04139-001-K07	PROJECT NO: 04139-004-000	SHEET 4 OF 4	DRAWING INDEX NO: A4139-000-009	REV:
---------------------	------------------	--------------------	----------------------------	------------------------------	-----------------	------------------------------------	------



STATE OF FLORIDA
DEPARTMENT OF STATE
STATE LIBRARY AND ARCHIVES OF FLORIDA

FILED FOR RECORD
R. B. SHORE

2006 DEC 18 PM 2:44

CLERK OF THE CIRCUIT COURT
MANATEE COUNTY
STEPHONDA COBB
Secretary of State

JEB BUSH
Governor

December 14, 2006

Honorable R. B. "Chips" Shore
Clerk of Circuit Court
Manatee County
Post Office Box 25400
Bradenton, Florida 34206

Attn: Diane E. Vollmer, D.C.

Dear Mr. Shore:

Pursuant to the provisions of Section 125.66, Florida Statutes, this will acknowledge receipt of your letter dated December 12, 2006, and certified copies of Manatee County Ordinance Nos. 06-32, 06-72, and 06-80, which were filed in this office on December 14, 2006.

Sincerely,

Liz Cloud
Program Administrator

LC/jru
Enclosures

DIRECTOR'S OFFICE

R.A. Gray Building • 500 South Bronough Street • Tallahassee, Florida 32399-0250
850.245.6600 • FAX: 850.245.6735 • TDD: 850.922.4085 • <http://dils.dos.state.fl.us>

COMMUNITY DEVELOPMENT
850.245.6600 • FAX: 850.245.6643

STATE LIBRARY OF FLORIDA
850.245.6600 • FAX: 850.245.6744

STATE ARCHIVES OF FLORIDA
850.245.6700 • FAX:
850.488.4894

LEGISLATIVE LIBRARY SERVICE
850.488.2812 • FAX:
850.488.9879

RECORDS MANAGEMENT SERVICES
850.245.6750 • FAX: 850.245.6795

ADMINISTRATIVE CODE AND WEEKLY
850.245.6270 • FAX: 850.245.6282