

**RESOLUTION VACATING CERTAIN STREETS, ROADS
OR OTHER APPROPRIATE PROPERTY
PURSUANT TO SECTION 177.101, FLORIDA STATUTES**

**VACATING CERTAIN PLATTED DRAINAGE & UTILITY EASEMENTS
LOTS 784 TO 786 & LOTS 796 TO 798, RIVERDALE REVISED SUBDIVISION**

WHEREAS, an Application for the Vacation of Certain Streets, Roads or Other Appropriate Property has been filed before the Board of County Commissioners of Manatee County, Florida, by **Camlin Home Corp., a Florida corporation, and Andrew & Kelly Page Minor, husband and wife**, and

WHEREAS, a Resolution Declaring Notice of Public Hearing on Application for the Vacation of Streets, Roads or Other Appropriate Property in connection therewith was duly adopted by said Board of County Commissioners and notice of the public hearing was duly published in a newspaper of general circulation in Manatee County, Florida, and

WHEREAS, a public hearing by said Board of County Commissioners was duly held considering the advisability of granting said Application, or some portion thereof, and the Board of County Commissioners was fully advised and informed in the premises.

NOW THEREFORE, BE IT RESOLVED, by the Board of County Commissioners of Manatee County, Florida, that:

1. There is hereby vacated, abandoned, discontinued and closed all of that part or portion of the particular street, road or other appropriate property in an unincorporated area of Manatee County, Florida, pursuant to the enabling legislation of Chapter 177.101, Florida Statutes, pertaining to subdivision plats and land boundaries, described as follows:

See EXHIBIT "A" Attached Hereto

2. No portion of the above described property constitutes or was acquired for a state or federal highway.

3. Any right of the County of Manatee, Florida, and the public in and to the above described real property is hereby renounced and disclaimed.

4. The above-identified Applicant has given notice of their application to the governing body of the County to vacate said street and plat or part thereof by publishing legal notice in a newspaper of general circulation in the County in which the tract or parcel of land is located, in not less than two weekly issues of said paper, and attached to the petition for vacation the proof of such publications.

DULY ADOPTED, with a quorum present and voting, this the 11th day of March 2003.

**BOARD OF COUNTY COMMISSIONERS
MANATEE COUNTY, FLORIDA**



BY: [Signature]
Chairman

ATTEST: **R. B. SHORE**
Clerk of Circuit Court

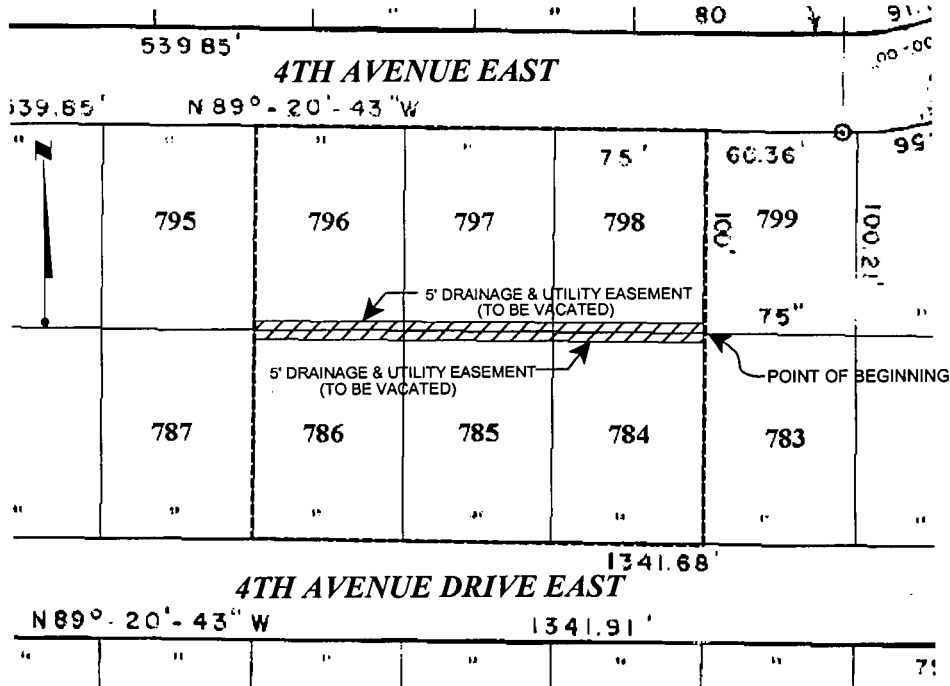
By: [Signature]

EXHIBIT "A"

LEGAL DESCRIPTION & SKETCH DRAINAGE & UTILITY EASEMENTS TO BE VACATED

SITUATED UPON
LOTS 784 TO 786 & LOTS 796 TO 798
RIVERDALE REVISED SUBDIVISION
PLAT BOOK 10, PAGES 40 TO 49

LOCATED IN
SECTION 28, TOWNSHIP 34 SOUTH, RANGE 18 EAST
MANATEE COUNTY, FLORIDA



NOT A SURVEY
NOT TO SCALE

DESCRIPTION OF DRAINAGE & UTILITY EASEMENT TO BE VACATED:

THOSE CERTAIN PLATTED, 5-FOOT WIDE, REAR LOT LINE, DRAINAGE AND UTILITY EASEMENTS SITUATED ON LOTS 784 TO 786 AND LOTS 796 TO 798 OF RIVERDALE REVISED, A SUBDIVISION RECORDED IN PLAT BOOK 10, PAGES 40 TO 49, OF THE PUBLIC RECORDS OF MANATEE COUNTY, FLORIDA, AND BEING MORE PARTICULARLY DESCRIBED AS:

BEGINNING AT THE NORTHEAST CORNER OF LOT 784 OF SAID RIVERDALE REVISED SUBDIVISION; THENCE S. 00°39'17" W. ALONG THE EAST LINE OF SAID LOT 784, A DISTANCE OF 5.00 FEET; THENCE N. 89°20'43" W., A DISTANCE OF 225.00 FEET ALONG A LINE PARALLEL TO THE NORTH LINE OF LOTS 784, 785 AND 786 OF SAID RIVERDALE REVISED, TO A POINT ON THE WEST LINE OF SAID LOT 786, THENCE N. 00°39'17" E. ALONG SAID WEST LINE, A DISTANCE OF 5.00 FEET TO THE NORTHWEST CORNER OF SAID LOT 786, ALSO BEING THE SOUTHWEST CORNER OF LOT 796 OF SAID RIVERDALE REVISED; THENCE CONTINUING N. 00°39'17" E. ALONG THE WEST LINE OF SAID LOT 796, A DISTANCE OF 5.00 FEET; THENCE S. 89°20'43" E., A DISTANCE OF 225.00 FEET ALONG A LINE PARALLEL TO THE SOUTH LINE OF LOTS 796, 797 AND 798 OF SAID RIVERDALE REVISED, TO A POINT ON THE EAST LINE OF SAID LOT 798; THENCE S. 00°39'17" W. ALONG SAID EAST LINE, A DISTANCE OF 5.00 FEET TO THE POINT OF BEGINNING. ALL LYING AND BEING IN SECTION 28, TOWNSHIP 34 SOUTH, RANGE 18 EAST, MANATEE COUNTY, FLORIDA.

AN AREA CONTAINING 2,250 SQUARE FEET MORE OR LESS.