

**RESOLUTION DECLARING A PUBLIC HEARING  
TO RECONSIDER AN APPLICATION TO VACATE  
CERTAIN, STREETS, ROADS OR OTHER APPROPRIATE PROPERTY  
PURSUANT TO SECTION 177.101, ET SEQ., FLORIDA STATUTES  
VACATING A PORTION OF THE PLATTED RIGHT-OF-WAY  
KNOWN AS 8<sup>th</sup> STREET COURT WEST**

WHEREAS, an Application has been made to the Board of County Commissioners of Manatee County, Florida, for the vacation of the hereinafter more particularly described streets, roads or other appropriate property by Manatee County, Florida, and the Mary Coble Tinkham Revocable Living Trust and

WHEREAS, said Application was denied by the Board of County Commissioners at a public hearing held on December 2, 2003, and

WHEREAS, the Board of County Commissioners, at its meeting of December 9, 2003, approved a request to reconsider said Application, and

WHEREAS, said Application seeks the vacation of that part or portion of the street, road or other appropriate property in an unincorporated area of Manatee County, Florida, described as follows:

**See EXHIBIT "A" Attached Hereto**

NOW THEREFORE, BE IT RESOLVED, by the Board of County Commissioners of Manatee County, Florida, that a public hearing will be held by the Board of County Commissioners of Manatee County, Florida, in the Commissioners' Chambers on the 1st Floor of the Manatee County Administrative Center, 1112 Manatee Avenue West, Bradenton, Florida, at 9:00 a.m., or as soon thereafter as same may be heard, on the 9<sup>th</sup> day of March 2004 to reconsider the advisability of granting said Application, or some portion thereof. All interested persons, firms, corporations or other entities and organizations shall govern themselves accordingly.

In accordance with Section 286.0105, Florida Statutes, any person desiring to appeal a decision made with respect to any matter considered at this hearing, that person will need a record of the proceedings, and, for such purpose, may need to ensure that a verbatim record of the proceedings is made, which record includes the testimony and evidence upon which the appeal is to be based.

Rules of procedure for this public hearing are in effect pursuant to Resolution 94-90. Copies of this Resolution are available for review at the Citizens Action Center on the ninth floor of the County Administration Building, 1112 Manatee Avenue West, Bradenton, Florida, and are available for purchase, at cost, at the County Administrator's Office.

DULY ADOPTED, with a quorum present and voting, this the 3<sup>RD</sup> day of FEBRUARY 2004.

**BOARD OF COUNTY COMMISSIONERS  
MANATEE COUNTY, FLORIDA**

BY: [Signature]  
Chairman

ATTEST: R.B. SHORE  
Clerk of Circuit Court

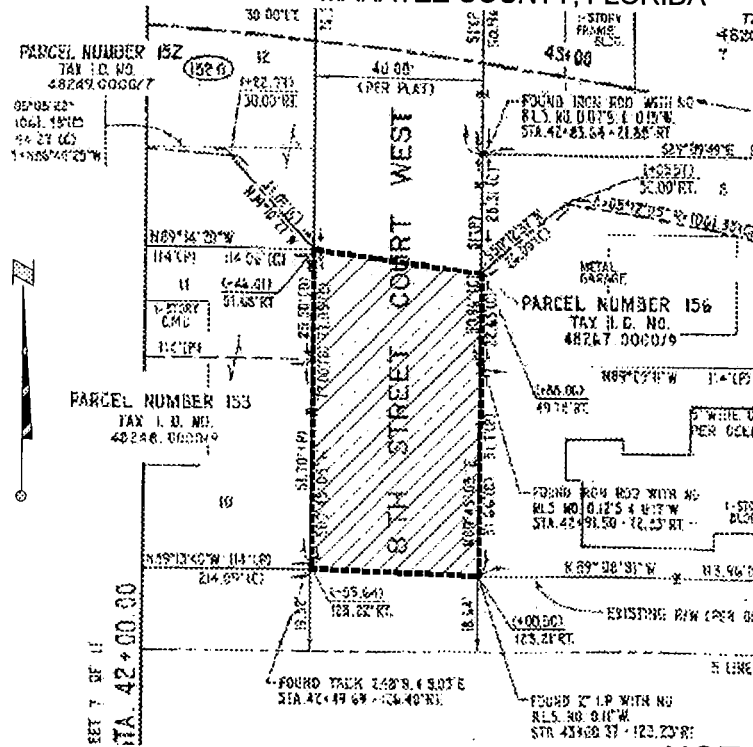
[Signature]



**EXHIBIT "A"** DESCRIPTION & SKETCH  
OF  
**RIGHT-OF-WAY TO BE VACATED**

LYING CONTIGUOUS TO  
**LOTS 8 & 9 AND LOTS 10 & 11**  
**BLOCK 2, THE PINES SUBDIVISION**  
**PLAT BOOK 5, PAGE 5**

LOCATED IN  
**SECTION 2, TOWNSHIP 35 SOUTH, RANGE 17 EAST**  
**MANATEE COUNTY, FLORIDA**



**NOT A SURVEY**  
**NOT TO SCALE**

**DESCRIPTION OF UTILITY EASEMENT:**

A SEGMENT OF 8<sup>th</sup> STREET COURT WEST (HEARTSDALE STREET) PER PLAT OF THE PINES SUBDIVISION AS RECORDED IN PLAT BOOK 5, PAGE 5, OF THE PUBLIC RECORDS OF MANATEE COUNTY, FLORIDA. SAID SEGMENT LYING SOUTH OF THE NEWLY REALIGNED SOUTH RIGHT OF WAY LINE OF 30<sup>th</sup> AVENUE WEST PER MANATEE COUNTY ROAD PROJECT NUMBER 7174 AND NORTH OF THE NORTH RIGHT OF WAY LINE OF 30<sup>th</sup> AVENUE WEST (JAMES STREET OF THE AFOREMENTIONED PLAT), BEING MORE PARTICULARLY DESCRIBED AS FOLLOWS:

COMMENCE AT THE INTERSECTION OF THE EAST RIGHT OF WAY LINE OF 8<sup>th</sup> STREET COURT WEST (HEARTSDALE STREET) AND THE NORTH RIGHT OF WAY LINE OF 30<sup>th</sup> AVENUE WEST (JAMES STREET), AS PER PLAT OF THE PINES SUBDIVISION AS RECORDED IN PLAT BOOK 5, PAGE 5, OF THE PUBLIC RECORDS OF MANATEE COUNTY, FLORIDA. SAID POINT OF INTERSECTION BEING THE POINT OF BEGINNING AND THE SOUTHWEST CORNER OF LOT 9, BLOCK 4, OF THE AFOREMENTIONED PLAT; THENCE NORTH ALONG THE EAST RIGHT OF WAY LINE OF 8<sup>th</sup> STREET COURT WEST, 74.31 FEET TO A POINT; THENCE IN A NORTHWESTERLY DIRECTION TO A POINT ON THE WEST RIGHT OF WAY LINE OF SAID 8<sup>th</sup> STREET COURT WEST (40 FEET WIDE PER SAID PLAT), SAID POINT BEING 77.20 FEET NORTH OF THE SOUTHEAST CORNER OF LOT 10, BLOCK 2, OF THE AFOREMENTIONED SUBDIVISION; THENCE SOUTH, ALONG THE WEST RIGHT OF WAY LINE OF 8<sup>th</sup> STREET COURT WEST, 77.20 FEET TO SAID SOUTHEAST CORNER OF LOT 10, BLOCK 2; THENCE EAST, ALONG THE EXTENSION OF THE NORTH RIGHT OF WAY LINE OF 30<sup>th</sup> AVENUE WEST, 40 FEET, MORE OR LESS TO THE POINT OF BEGINNING.

ALL OF THE ABOVE, BEING AND LYING IN THE NORTHWEST 1/4 OF THE NORTHEAST 1/4 OF SECTION 2, TOWNSHIP 35 SOUTH, RANGE 17 EAST, MANATEE COUNTY, FLORIDA.

AN AREA CONTAINING 3030 SQUARE FEET, MORE OR LESS.