

RESOLUTION R-11-238

A RESOLUTION AUTHORIZING USE OF “QUICK TAKING” CONDEMNATION PROCEEDINGS FOR THE PUBLIC USE AND PUBLIC PURPOSE OF CONSTRUCTION ACTIVITIES, WIDENING, DEEPENING, DREDGING, CLEARING AND SNAGGING OF THE BANKS, OR OTHERWISE IMPROVING THE WARE’S CREEK FLOODWAY AND STORM WATER IMPROVEMENT AREA AS PART OF THE WARE’S CREEK STORM WATER FLOOD CONTROL PUBLIC PROJECT IN MANATEE COUNTY, FLORIDA; PROVIDING AN EFFECTIVE DATE.

**WARE’S CREEK - CANAL DREDGING
PARCEL E-142.2
PROJECT NO. 6028801**

WHEREAS, Manatee County, Florida, has made an effort to acquire certain property interests along or within the planned corridor of the Ware’s Creek – Canal Dredging Project by purchase from the owners; and

WHEREAS, the Board of County Commissioners has heretofore authorized the institution of eminent domain proceedings to acquire said properties, all as described and set out in Resolution R-11-237; and

WHEREAS, the Board of County Commissioners wishes to utilize “quick taking” condemnation proceedings.

NOW, THEREFORE, BE IT RESOLVED BY THE BOARD OF COUNTY COMMISSIONERS OF MANATEE COUNTY, FLORIDA, as follows that:

1. Manatee County is authorized to utilize “quick taking” eminent domain proceedings under Chapter 74, Florida Statutes, and all other applicable statutes, and that the Board of County Commissioners declares its intention to utilize such proceedings to acquire the necessary interests in the property hereinafter described.

2. Manatee County cannot proceed with the necessary improvements to Ware's Creek – Canal Dredging Project until it acquires title to the hereinafter-described property.

3. Delay in acquiring the necessary interests and the resultant delay in construction will adversely affect the project.


4. Manatee County will diligently pursue and prosecute the eminent domain proceedings.

5. The property to be taken is more particularly described in Schedule 1 which is attached hereto and made a part hereof.

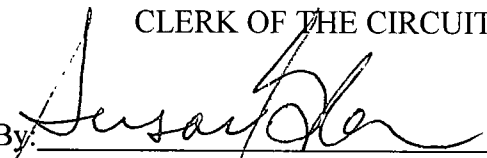
6. This Resolution shall take effect immediately upon its passage.

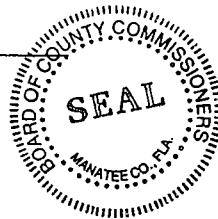
ADOPTED with a quorum present and voting this 8 day of November, 2011.

BOARD OF COUNTY COMMISSIONERS
MANATEE COUNTY, FLORIDA

By: 
Chairman

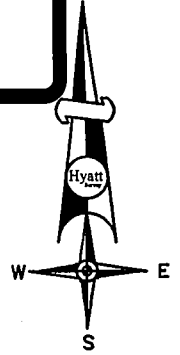
ATTEST: R. B. SHORE
CLERK OF THE CIRCUIT COURT

By: 
Deputy Clerk

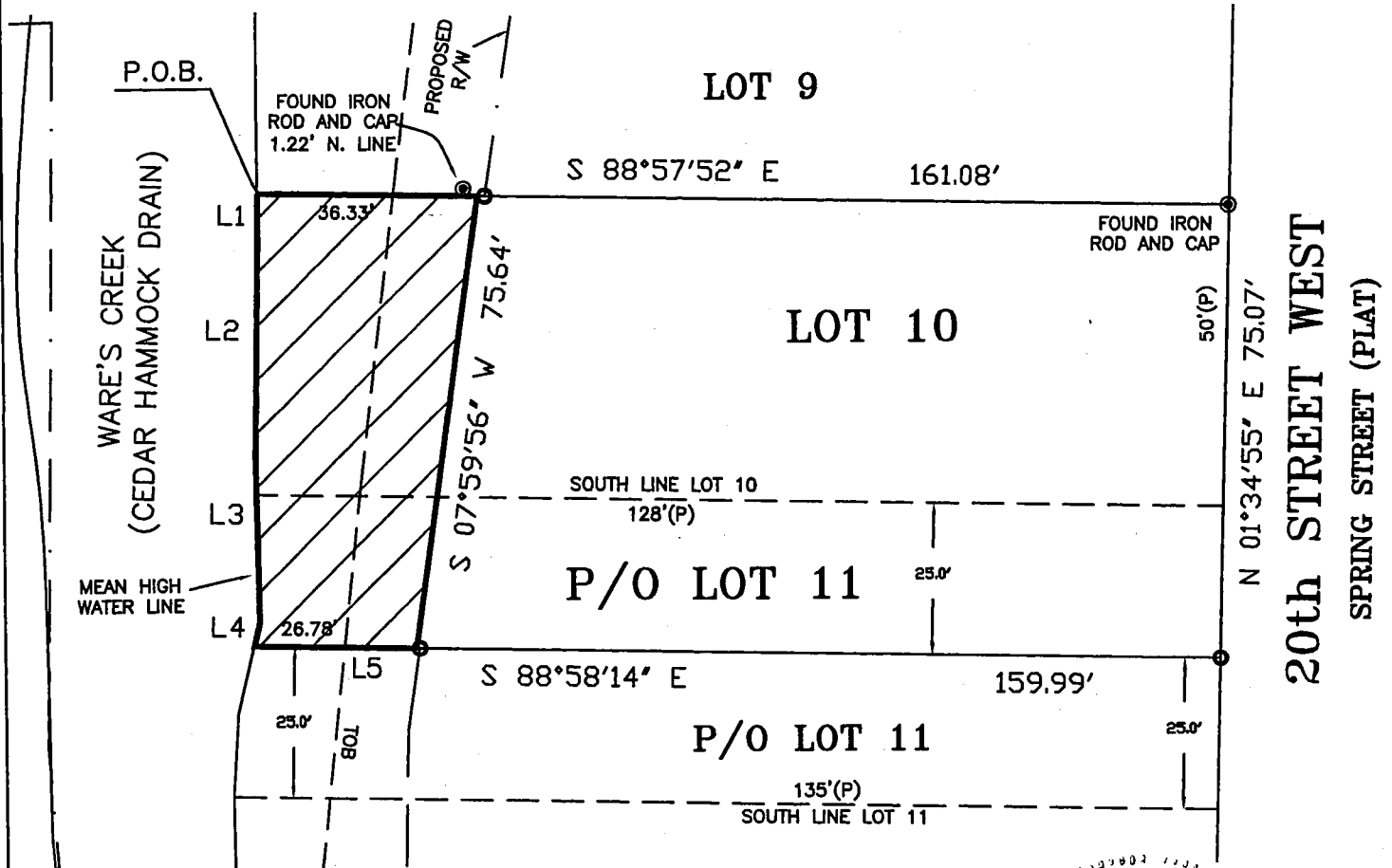


SCHEDULE 1

| LINE TABLE | | |
|------------|--------|-------------|
| LINE | LENGTH | BEARING |
| L1 | 4.95 | N00°04'23"W |
| L2 | 38.07 | N00°51'27"E |
| L3 | 28.04 | N01°07'15"W |
| L4 | 4.14 | N13°30'56"E |
| L5 | 27.35 | N88°58'14"W |



Scale: 1" = 30'



NOTE:
FOR DESCRIPTIVE PURPOSE ONLY,
THIS IS NOT A SURVEY.

REVISED: 6/20/08 REVISED EASEMENT
REVISED: 2/6/06 TITLE BLOCK CHANGED P.H.
REVISED: 1/15/05

FOR: MANATEE COUNTY

(Signature)
RUSSELL P. HYATT, P.S.M.
Florida Surveyor's Reg'n. No. LS: 5303
NOT VALID WITHOUT THE SIGNATURE AND THE ORIGINAL RAISED SEAL OF A FLORIDA LICENSED SURVEYOR AND MAPPER.

TITLE
ACCESS AND MAINTENANCE EASEMENT
E-142.2 PARCEL 40842.00007
STATION 63+95 TO 64+70

Hyatt Survey Services, Inc.

LB No.: 7203 Geographic Data Specialists
11007 8th Avenue East Bradenton, Florida 34212
Phone (941) 748-4693 Fax (941) 744-1643

| | | | | | | | | |
|-----------------------|---------------|----------------------|------------------|-------------------|------------------|-----------------|--------------------------|-----------------|
| JOB NUMBER 03-1073 | SECTION 34 | TOWNSHIP 34 SOUTH | RANGE 17 EAST | SCALE 1" = 30' | DATE 12/29/04 | DRAWN BY PAH | FILE NAME 40842-00007 | SHEET 1 OF 2 |
|-----------------------|---------------|----------------------|------------------|-------------------|------------------|-----------------|--------------------------|-----------------|

THAT PART OF LOTS 10 AND 11, REVISED PLAT OF TERRACEDALE, AS PER PLAT THEREOF RECORDED IN PLAT BOOK 5, PAGE 31 OF THE PUBLIC RECORDS OF MANATEE COUNTY, FLORIDA, BEING DESCRIBED AS FOLLOWS:

COMMENCE AT THE NORTHWEST CORNER OF SAID LOT 10 FOR A POINT OF BEGINNING;

THENCE S 88°57'52" E, ALONG THE NORTH LINE OF SAID LOT 10, A DISTANCE OF 36.33 FEET; THENCE S 07°59'56" W, A DISTANCE OF 75.64 FEET; THENCE N 88°58'14" W, A DISTANCE OF 26.78 FEET TO THE INTERSECTION WITH THE MEAN HIGH WATER LINE; THENCE NORTHERLY, ALONG SAID MEAN HIGH WATER LINE, THE FOLLOWING FOUR (4) COURSES: N 13°30'56" E, A DISTANCE OF 4.14 FEET; THENCE N 01°07'15" W, A DISTANCE OF 28.04 FEET; THENCE N 00°51'27" E, A DISTANCE OF 38.07 FEET; THENCE N 00°04'23" W, A DISTANCE OF 4.95 FEET TO THE NORTHWEST CORNER OF SAID LOT 11 AND THE POINT OF BEGINNING.

CONTAINING 2353 SQUARE FEET.

REVISED: 6/20/08 REVISED EASEMENT
 REVISED: 2/6/06 TITLE BLOCK CHANGED P.H.
 REVISED: 1/15/05

FOR: MANATEE COUNTY

TITLE
ACCESS AND MAINTENANCE EASEMENT
E-142.2 PARCEL 40842.00007
STATION 63+95 TO 64+70

Hyatt Survey Services, Inc.

LB No.: 7203

Geographic Data Specialists

11007 8th Avenue East Bradenton, Florida 34212

Phone (941) 748-4693 Fax (941) 744-1643

| | | | | | | | | |
|-----------------------|---------------|----------------------|------------------|---------------|------------------|-----------------|--------------------------|-----------------|
| JOB NUMBER 03-1073 | SECTION 34 | TOWNSHIP 34 SOUTH | RANGE 17 EAST | SCALE ---- | DATE 12/29/04 | DRAWN BY PAH | FILE NAME 40842-00007 | SHEET 2 OF 2 |
|-----------------------|---------------|----------------------|------------------|---------------|------------------|-----------------|--------------------------|-----------------|