

RESOLUTION R-21-096

A RESOLUTION OF THE BOARD OF COUNTY COMMISSIONERS OF MANATEE COUNTY, FLORIDA, DECLARING A PUBLIC HEARING TO CONSIDER AN APPLICATION TO VACATE A PORTION OF PLATTED RIGHT OF WAY AT 18900 STATE ROAD 64 EAST, BRADENTON, FLORIDA 34212, AS RECORDED IN THE PLAT OF THE WATERBURY GRAPE FRUIT TRACTS, PLAT BOOK 2, PAGE 37, OF THE PUBLIC RECORDS OF MANATEE COUNTY, FLORIDA PURSUANT TO SECTIONS 336.09, 336.10 AND 336.12, FLORIDA STATUTES, AND THE LAND DEVELOPMENT CODE, MANATEE COUNTY, FLORIDA.

WHEREAS, an application has been made and filed before the Board of County Commissioners of Manatee County, Florida, (Board) by SMR Taylor Ranch, LLC (Applicant) to vacate a portion of platted right of way at 18900 State Road 64 East, Bradenton, Florida 34212, as recorded in the plat of The Waterbury Grape Fruit Tracts, Plat Book 2, Page 37, of the Public Records of Manatee County, Florida;

WHEREAS, the Applicant seeks to vacate property located in Manatee County, Florida, and more particularly described in Exhibit A attached hereto and by this reference provided herein.

WHEREAS, Resolution R-21-052, which scheduled a Public Hearing for May 25, 2021, was adopted by the Board on April 20, 2021. The required Notice of Public Hearing advertised in the Bradenton Herald contained an error. This error necessitated the Public Hearing be rescheduled.

NOW THEREFORE, BE IT RESOLVED, by the Board that a public hearing will be held before the Board in the Commissioners' Chambers on the first floor of the Manatee County Administrative Center, 1112 Manatee Avenue West, Bradenton, Florida, at 9:00 a.m., or as soon thereafter as same may be heard, on the 27th day of July 2021, to consider the advisability of granting said application, or some portion thereof. All interested persons, firms, corporations or other entities and organizations shall govern themselves accordingly.

In accordance with Section 286.0105, Florida Statutes, if any person decides to appeal a decision made with respect to any matter considered at this hearing, he or she will need a record of the proceedings and therefore, he or she may need to ensure that a verbatim record of the proceedings is made, including the testimony and evidence upon which the appeal is to be based.

Copies of this Resolution are available for review at the Property Acquisition Division which is located on the eighth floor of the Manatee County Administrative Center, 1112 Manatee Avenue West, Bradenton, Florida, and are available for purchase, at cost.

DULY ADOPTED with a quorum present and voting this 8th day of June 2021.



**BOARD OF COUNTY COMMISSIONERS
OF MANATEE COUNTY, FLORIDA**

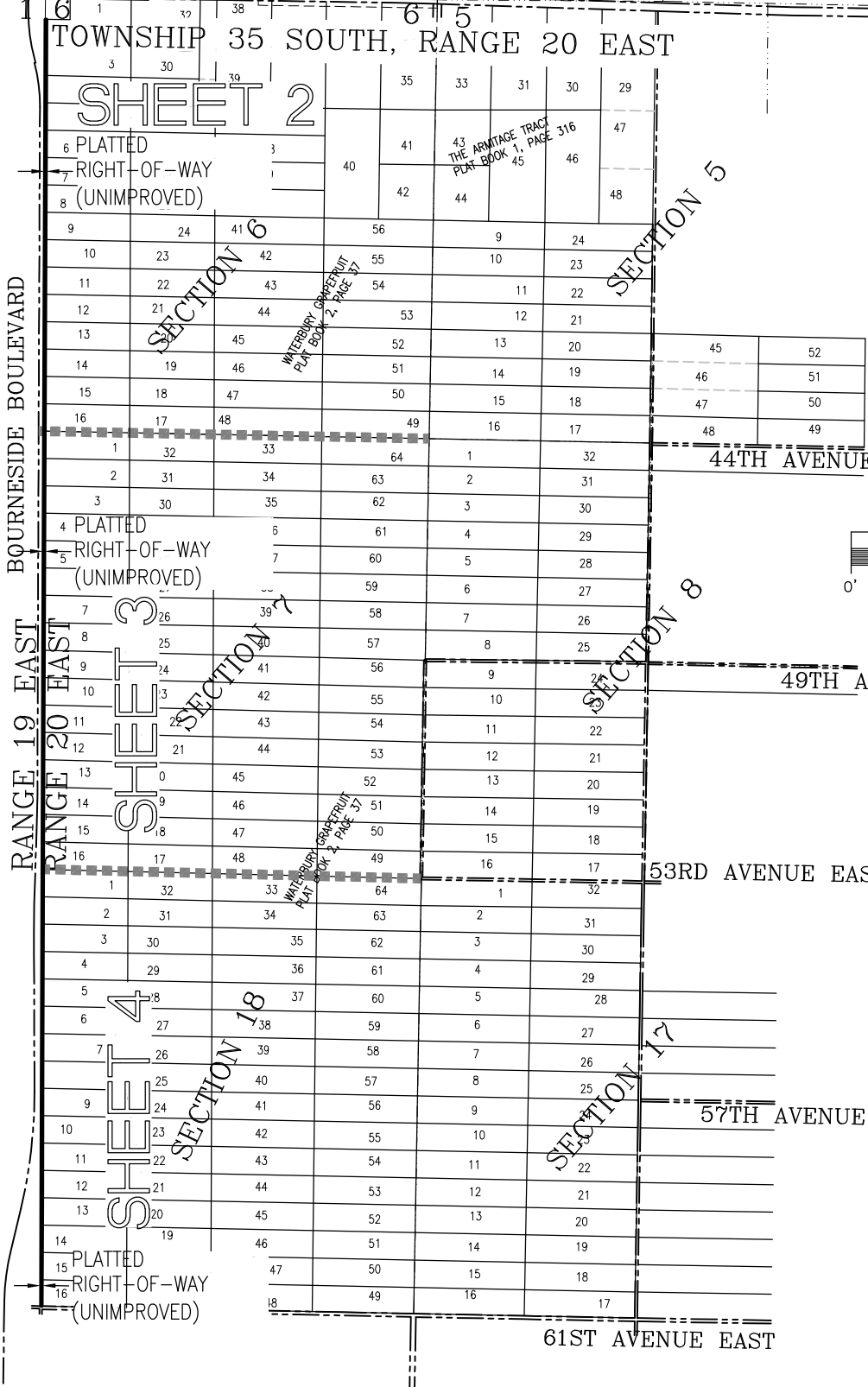
By: _____

Chairperson

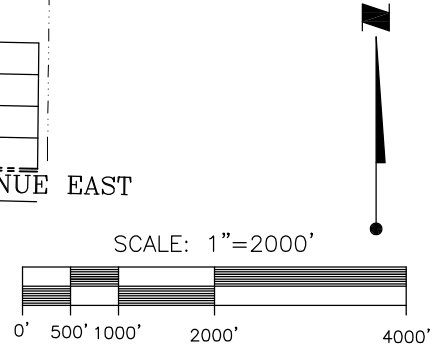
ATTEST: ANGELINA COLONNESO
CLERK OF THE CIRCUIT COURT AND COMPTROLLER

By: _____

Deputy Clerk



LEGEND:
 O.R.BK. = OFFICIAL RECORDS BOOK
 P. = PAGE
 P.B. = PLAT BOOK
 SEE SHEET 1 FOR OVERALL
 SEE SHEET 2-4 FOR DETAIL SKETCHES
 SEE SHEET 5 FOR DESCRIPTION



OVERALL

This is NOT a Survey and Not valid without all sheets.

REV "A" - REVISED LEGAL DESCRIPTION - 03/02/2021 - RRC - 10:17:31 BCUNNINGHAM|V:\2156\active\215615741\survey\drawing\215615741v-sk0003.dwg

SKETCH & DESCRIPTION OF VACATION OF
 PLATTED RIGHT-OF-WAY IN
 SECTIONS 6, 7 & 18, TOWNSHIP 35 SOUTH,
 RANGE 20 EAST, MANATEE COUNTY, FLORIDA



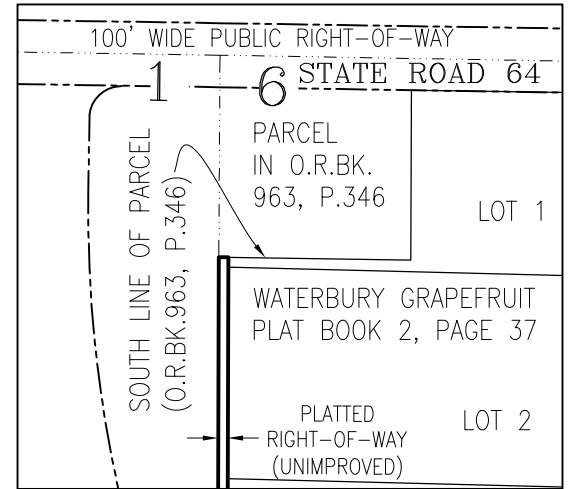
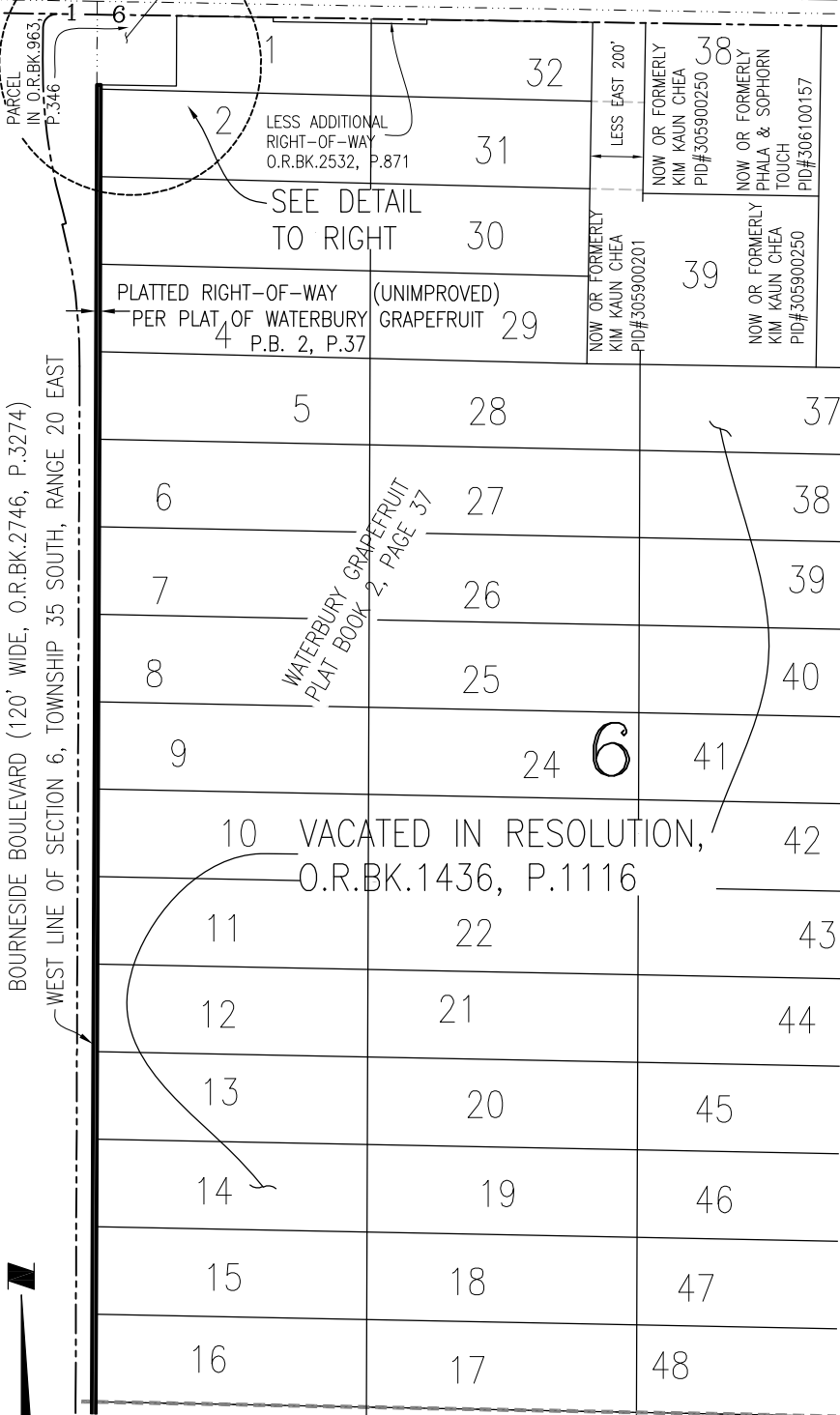
Stantec
 6900 Professional Parkway East, Sarasota, FL 34240-8414
 Phone 941-907-6900 • Fax 941-907-6910
 Certificate of Authorization #27013 • www.stantec.com
 Licensed Business Number 7866

| | | | | | | | |
|-------------------|------------------|-----------------|--------------------------------|--------------------------|-----------------|--|-----------|
| TASK CODE: 410 | DRAWN BY: JWB | CHKD BY: RRC | CAD FILE: 215615741v-sk0003 | PROJECT NO: 215615741 | SHEET 1 OF 5 | DRAWING INDEX NO: 215615741v-sk0003 | REV: A |
|-------------------|------------------|-----------------|--------------------------------|--------------------------|-----------------|--|-----------|

100' PUBLIC RIGHT-OF-WAY
STATE ROAD 64

COMMUNICATIONS TOWER SITE
PID#305910002

BOURNESIDE BOULEVARD (120' WIDE, O.R.BK.2746, P.3274)
WEST LINE OF SECTION 6, TOWNSHIP 35 SOUTH, RANGE 20 EAST



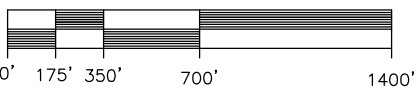
DETAIL
SCALE: 1"=300'

LEGEND:
O.R.BK. = OFFICIAL RECORDS BOOK

P. = PAGE
P.B. = PLAT BOOK

SEE SHEET 1 FOR OVERALL
SEE SHEET 2-4 FOR DETAIL SKETCHES
SEE SHEET 5 FOR DESCRIPTION

SCALE: 1"=700'



MATCH LINE, SEE SHEET 3

SECTION 6

This is NOT a Survey and Not valid without all sheets.

Mar 02, 2021 - 10:20:13 BCUNNINGHAM[V:\2156\active\215615741\survey\drawing\215615741v-sk0003.dwg

SKETCH & DESCRIPTION OF VACATION OF
PLATTED RIGHT-OF-WAY IN
SECTIONS 6, 7 & 18, TOWNSHIP 35 SOUTH,
RANGE 20 EAST, MANATEE COUNTY, FLORIDA



Stantec

6900 Professional Parkway East, Sarasota, FL 34240-8414
Phone 941-907-6900 • Fax 941-907-6910
Certificate of Authorization #27013 • www.stantec.com
Licensed Business Number 7866

| | | | | | | | |
|-------------------|------------------|-----------------|--------------------------------|--------------------------|-----------------|--|-----------|
| TASK CODE: 410 | DRAWN BY: JWB | CHKD BY: RRC | CAD FILE: 215615741v-sk0003 | PROJECT NO: 215615741 | SHEET 2 OF 5 | DRAWING INDEX NO: 215615741v-sk0003 | REV: A |
|-------------------|------------------|-----------------|--------------------------------|--------------------------|-----------------|--|-----------|

MATCH LINE, SEE SHEET 2

EXHIBIT "A"

BOURNESIDE BOULEVARD (120' WIDE, O.R.BK.2746, P.3274)
WEST LINE OF SECTION 6, TOWNSHIP 35 SOUTH, RANGE 20 EAST

| | | | |
|---|---|----|----|
| PLATTED RIGHT-OF-WAY (UNIMPROVED) | 1 | 32 | 33 |
| PER PLAT OF WATERBURY GRAPEFRUIT | 2 | 31 | 34 |
| P.B. 2, P.37 | 3 | 30 | 35 |
| | 4 | 29 | 36 |
| | 5 | 28 | 37 |
| 6 | VACATED IN RESOLUTION, O.R.BK.1436, P.1116 | | 38 |
| 7 | 26 | | 39 |
| 8 | 25 | | 40 |
| 9 | 24 | | 41 |
| 10 | 23 | | 42 |
| 11 | 22 | | 43 |
| 12 | 21 | | 44 |
| 13 | 20 | | 45 |
| 14 | 19 | | 46 |
| 15 | 18 | | 47 |
| 16 | 17 | | 48 |

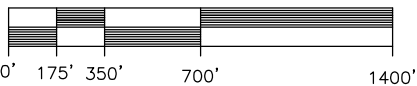
WATERBURY GRAPEFRUIT
PLAT BOOK 2, PAGE 37

LEGEND:
O.R.BK. = OFFICIAL RECORDS
BOOK
P. = PAGE
P.B. = PLAT BOOK
SEE SHEET 1 FOR OVERALL
SEE SHEET 2-4 FOR DETAIL
SKETCHES
SEE SHEET 5 FOR DESCRIPTION

MATCH LINE, SEE SHEET 4



SCALE: 1"=700'



SECTION 7

This is NOT a Survey and Not valid without all sheets.

Mar 02, 2021 - 10:21:11 BCUNNINGHAM[V:\2156\active\215615741\survey\drawing\215615741v-sk0003.dwg

SKETCH & DESCRIPTION OF VACATION OF
PLATTED RIGHT-OF-WAY IN
SECTIONS 6, 7 & 18, TOWNSHIP 35 SOUTH,
RANGE 20 EAST, MANATEE COUNTY, FLORIDA



Stantec

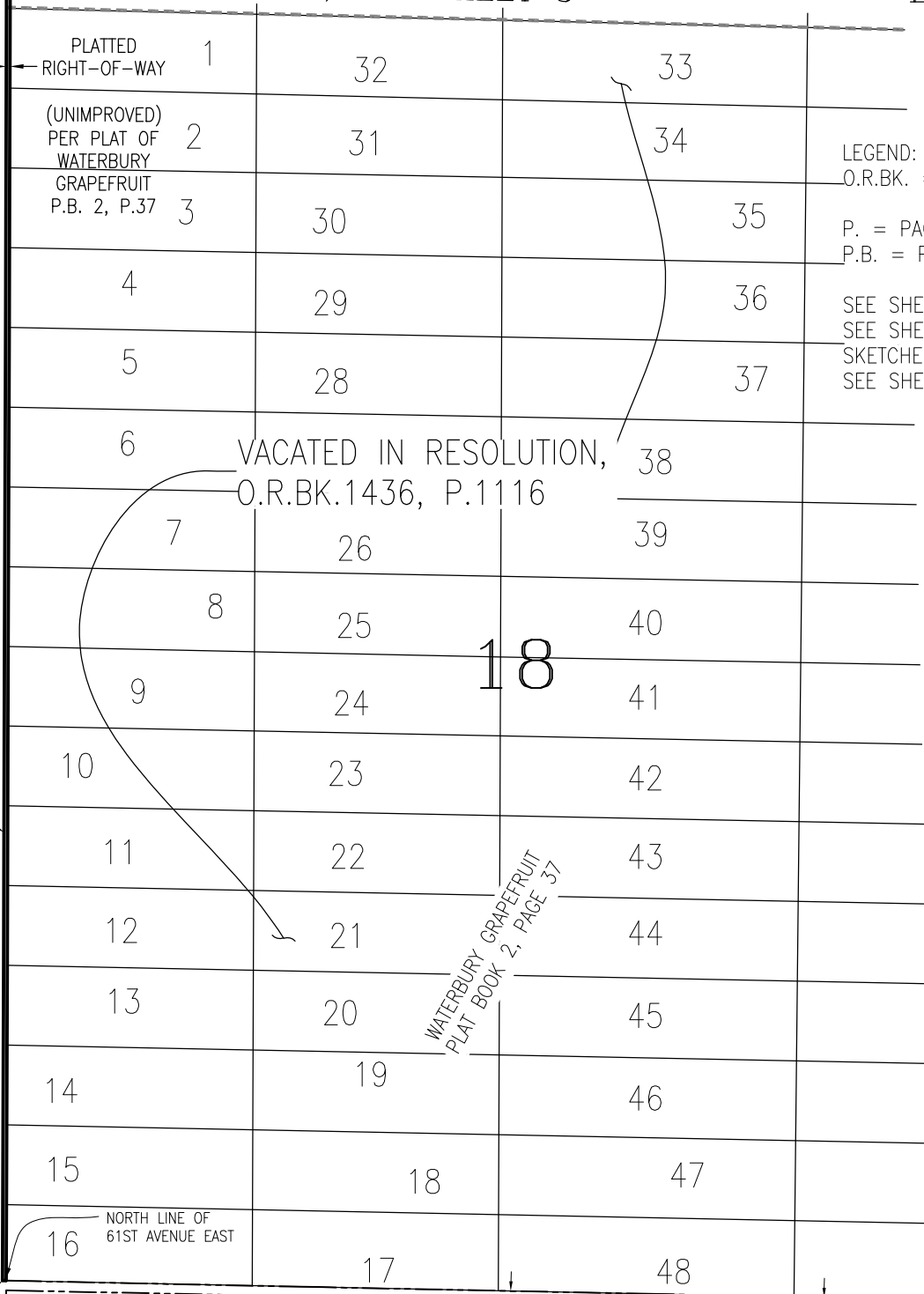
6900 Professional Parkway East, Sarasota, FL 34240-8414
Phone 941-907-6900 • Fax 941-907-6910
Certificate of Authorization #27013 • www.stantec.com
Licensed Business Number 7866

| | | | | | | | |
|-------------------|------------------|------------------|--------------------------------|--------------------------|-----------------|--|-----------|
| TASK CODE: 410 | DRAWN BY: JWB | CHKED BY: RRC | CAD FILE: 215615741v-sk0003 | PROJECT NO: 215615741 | SHEET 3 OF 5 | DRAWING INDEX NO: 215615741v-sk0003 | REV: A |
|-------------------|------------------|------------------|--------------------------------|--------------------------|-----------------|--|-----------|

MATCH LINE, SEE SHEET 3

EXHIBIT "A"

BOURNESIDE BOULEVARD (120' WIDE, O.R.BK.2746, P.3274)
WEST LINE OF SECTION 6, TOWNSHIP 35 SOUTH, RANGE 20 EAST



LEGEND:
O.R.BK. = OFFICIAL RECORDS BOOK
P. = PAGE
P.B. = PLAT BOOK
SEE SHEET 1 FOR OVERALL
SEE SHEET 2-4 FOR DETAIL SKETCHES
SEE SHEET 5 FOR DESCRIPTION

VACATED IN RESOLUTION,
O.R.BK.1436, P.1116

18

WATERBURY GRAPEFRUIT
PLAT BOOK 2, PAGE 37

NORTH LINE OF
61ST AVENUE EAST

SOUTHWEST CORNER
OF SECTION 18

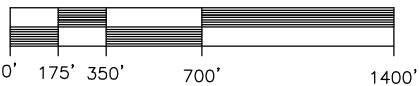
61ST AVENUE EAST

40' PLATTED RIGHT-OF-WAY
(UNIMPROVED)

40' PLATTED
RIGHT-OF-WAY
(UNIMPROVED)

POMELLO PARK
PLAT BOOK 6, PAGE 61

SCALE: 1"=700'



SECTION 18

This is NOT a Survey and Not valid without all sheets.

Mar 02, 2021 - 10:22:13 BCUNNINGHAM\j:\2156\active\215615741\survey\drawing\215615741v-sk0003.dwg

SKETCH & DESCRIPTION OF VACATION OF
PLATTED RIGHT-OF-WAY IN
SECTIONS 6, 7 & 18, TOWNSHIP 35 SOUTH,
RANGE 20 EAST, MANATEE COUNTY, FLORIDA



Stantec

6900 Professional Parkway East, Sarasota, FL 34240-8414
Phone 941-907-6900 • Fax 941-907-6910
Certificate of Authorization #27013 • www.stantec.com
Licensed Business Number 7866

| | | | | | | | |
|-------------------|------------------|-----------------|--------------------------------|--------------------------|-----------------|--|-----------|
| TASK CODE: 410 | DRAWN BY: JWB | CHKD BY: RRC | CAD FILE: 215615741v-sk0003 | PROJECT NO: 215615741 | SHEET 4 OF 5 | DRAWING INDEX NO: 215615741v-sk0003 | REV: A |
|-------------------|------------------|-----------------|--------------------------------|--------------------------|-----------------|--|-----------|

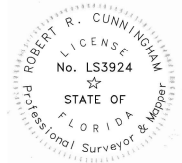
DESCRIPTION PREPARED BY THE SIGNING SURVEYOR & MAPPER

Right of way on the west side of vacated Tracts 1 through 16 and on the west side of vacated rights of way adjacent to said lots, of The Waterbury Grape Fruit Tracts, in each of Sections 6, 7 and 18, Township 35 South, Range 20 East, as per Plat thereof recorded in Plat Book 2, Page 37 of the Public Records of Manatee County, Florida, lying south of the parcel of land described in Official Records Book 963, Page 346, of said Public Records.

NOTES:

1. NOT VALID WITHOUT THE ORIGINAL SIGNATURE AND RAISED SEAL OR ELECTRONIC SIGNATURE AND SEAL OF A FLORIDA SURVEYOR AND MAPPER.
2. THIS IS A SKETCH ONLY AND DOES NOT REPRESENT A FIELD SURVEY.
3. ADJACENT LAND:

VACATED TRACTS 1 THROUGH 16 OF THE WATERBURY GRAPE FRUIT TRACTS, IN EACH OF SECTIONS 6, 7 AND 18, TOWNSHIP 35 SOUTH, RANGE 20 EAST, AS PER PLAT THEREOF RECORDED IN PLAT BOOK 2, PAGE 37, OF THE PUBLIC RECORDS OF MANATEE COUNTY, FLORIDA, TOGETHER WITH A PORTION OF CERTAIN STREETS AND ROADS AS APPURTENANT TO THE ABOVE DESCRIBED PROPERTY BY RESOLUTION RECORDED IN OFFICIAL RECORDS BOOK 1436, PAGE 1116, OF THE PUBLIC RECORDS OF MANATEE COUNTY, FLORIDA.



Digitally signed
by Robert R
Cunningham
Date: 2021.03.02
10:28:39 -05'00'

Robert R. Cunningham, P.S.M.
Florida Registration No. 3924

03/02/2021
Date of Signature

DESCRIPTION

This is NOT a Survey and Not valid without all sheets.

Mar 02, 2021 - 10:23:22 BCUNNINGHAM|v:\2156\active\215615741\survey\drawing\215615741v-sk0003.dwg

SKETCH & DESCRIPTION OF VACATION OF
PLATTED RIGHT-OF-WAY IN
SECTIONS 6, 7 & 18, TOWNSHIP 35 SOUTH,
RANGE 20 EAST, MANATEE COUNTY, FLORIDA



Stantec

6900 Professional Parkway East, Sarasota, FL 34240-8414
Phone 941-907-6900 • Fax 941-907-6910
Certificate of Authorization #27013 • www.stantec.com
Licensed Business Number 7866

| | | | | | | | |
|-------------------|------------------|------------------|--------------------------------|--------------------------|-----------------|--|-----------|
| TASK CODE: 410 | DRAWN BY: JWB | CHKED BY: RRC | CAD FILE: 215615741v-sk0003 | PROJECT NO: 215615741 | SHEET 5 OF 5 | DRAWING INDEX NO: 215615741v-sk0003 | REV: A |
|-------------------|------------------|------------------|--------------------------------|--------------------------|-----------------|--|-----------|