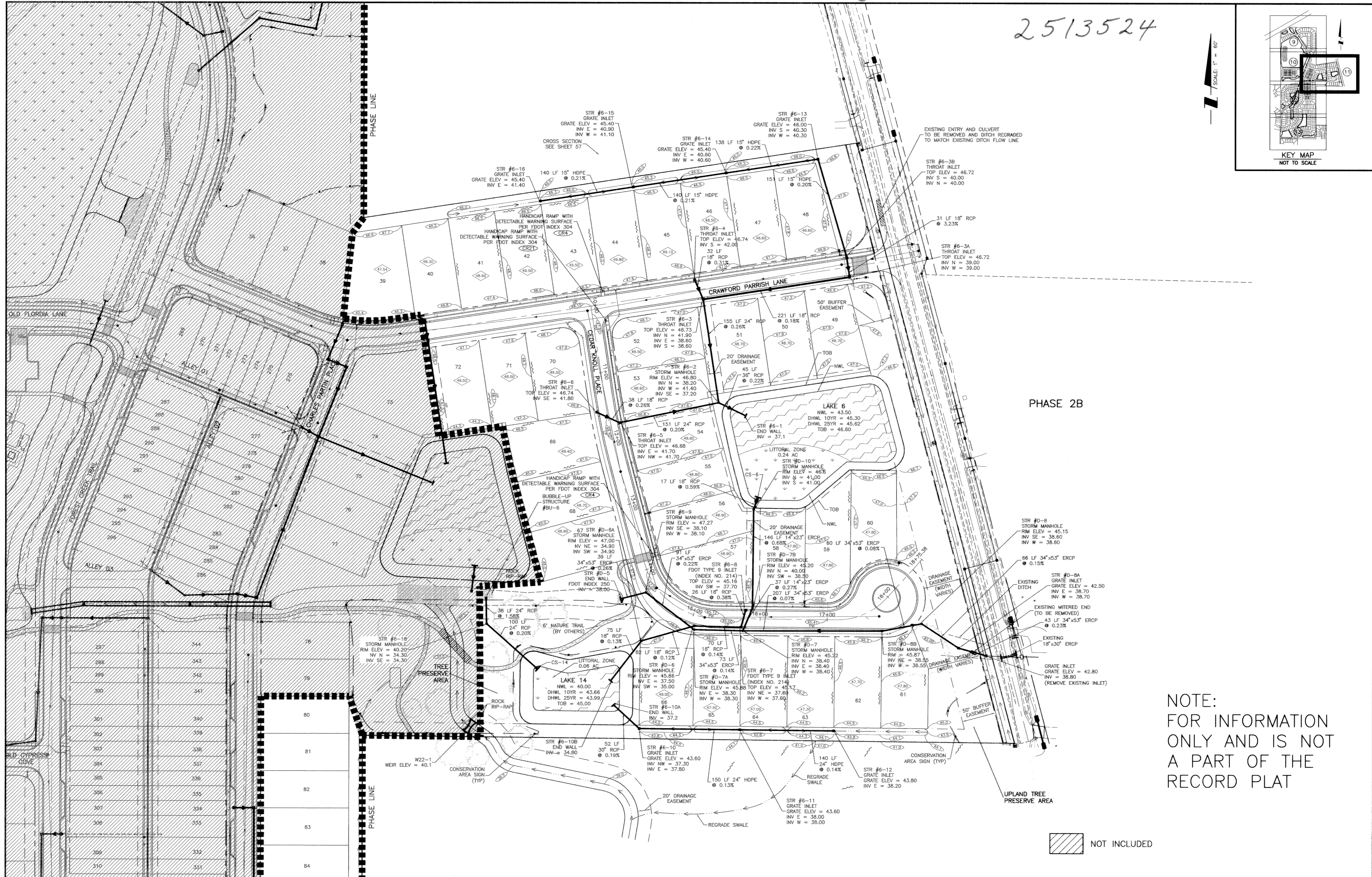


2513524



NOTE:
FOR INFORMATION
ONLY AND IS NOT
A PART OF THE
RECORD PLAT

NOT INCLUDED

D ADDED WEIR FOR SWFWMD ERP APPLICATION 05/15/07 MLP/1536	C REVISED PER MANATEE COUNTY COMMENTS 03/22/07 MLP/1536	B REVISED PER MANATEE COUNTY COMMENTS 03/13/07 MLP/1536	A REVISED PER MANATEE COUNTY COMMENTS 02/14/07 MLP/1536	ACTIVITY DESIGNED BY: DRAWN BY: CHECKED BY: CONTRACT ADMIN. BY: WM APPROVED BY:	INITIALS/EMP. NO. DATE	WilsonMiller <small>Planners - Engineers - Ecologists - Surveyors - Landscape Architects - Transportation Consultants</small> <small>WilsonMiller, Inc.</small> <small>6900 Professional Parkway East, Suite 100 - Sarasota, Florida 34240-8444 - Phone 941-907-6900 - Fax 941-907-6990 - Web Site www.wilsonmiller.com</small>	CLIENT: RESOURCE CONSERVATION OF MANATEE, LLC PROJECT: FOREST CREEK PHASE IIB CONSTRUCTION PLANS	DATE: 5/04 PROPORTIONAL SCALE: 1"=60' VERTICAL SCALE: SHEET NUMBER: 04264-001M01	TITLE: GRADING AND DRAINAGE PLAN PROJECT NUMBER: 04264-001-000	MICHAEL E. ROSSMAN, JR., P.E., P.S.M. FLORIDA CERTIFICATE NO. 00218 D-04264-001-011B SHEET NUMBER: 11 OF 69
--	--	--	--	--	---------------------------	---	---	--	---	---